

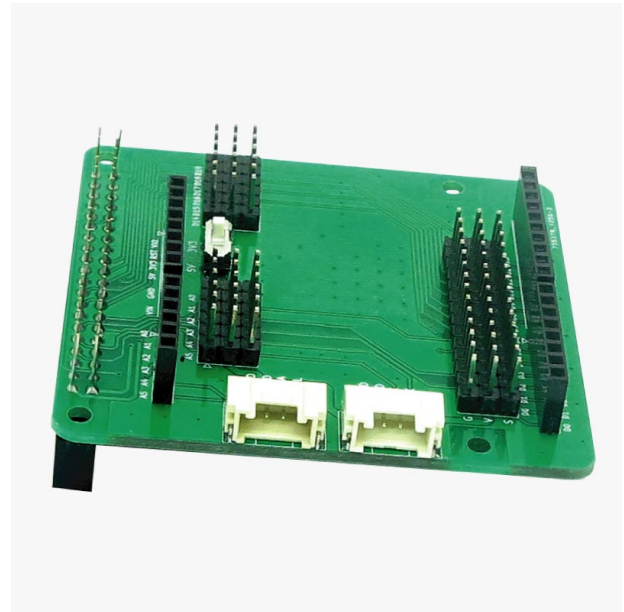
# Raspberry Pi adapter for simpleRTK

Includes:

- Raspberry Pi adapter for the simpleRTK boards



More info about the product!



Raspberry Pi adapter for simpleRTK SKU is: AS-ADP-ARDUINO-TO-RPI-00

Get a discounted bulk price on this product for orders of 50 units or more. Contact us at [info@ardusimple.com](mailto:info@ardusimple.com) to get a quote.

## Description

Bring low cost high precision RTK GNSS positioning to your Raspberry Pi projects with this adapter fully compatible with simpleRTK2B and simpleRTK3B boards.

This adapter board:

- Connects simpleRTK UART1 to Raspberry Pi uart0 (GPIO 14 and 15 on RPi header)
- Powers your simpleRTK board directly with your Raspberry Pi
- It's the adapter only, does not include a Raspberry Pi
- You can also use this adapter to connect any arduino shield to your Raspberry Pi
- The voltage switch (5V or 3.3V) is irrelevant for the communication and power of simpleRTK, as our boards support both voltages. So this switch only sets the voltage available on the headers of the adapter.
- The 2 white connectors are Grove 4-pin

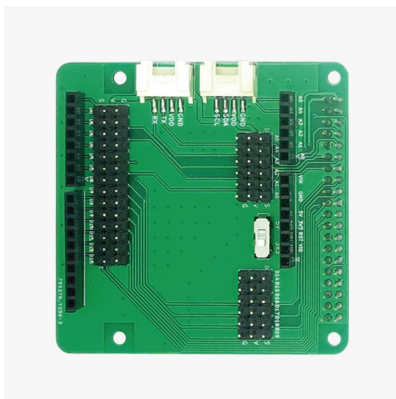
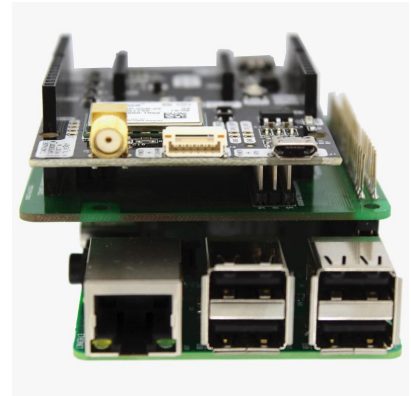
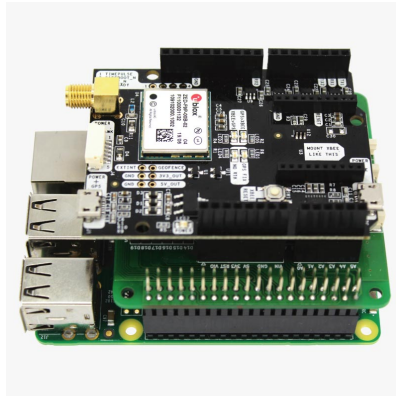
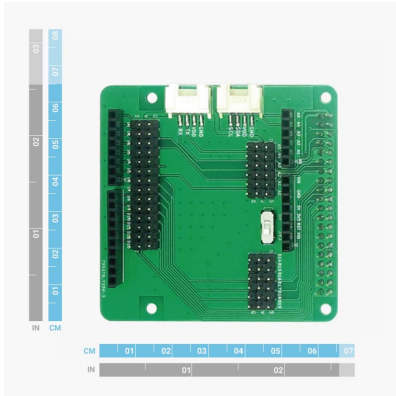
Checkout our software tutorial to get up and running at the speed of light:

<https://www.ardusimple.com/connect-your-simplertk2b-to-a-raspberry-pi/>

Good to know:

- Can also be used to connect any Arduino UNO shield to your Raspberry Pi.

## Image Gallery



Raspberry Pi adapter for simpleRTK includes free basic technical support. Contact [info@ardusimple.com](mailto:info@ardusimple.com) for more information.

Data and descriptions in this document are subject to change without notice. Product photos and pictures are for illustration purposes only and may differ from the real product appearance.

# Mouser Electronics

Authorized Distributor

Click to View Pricing, Inventory, Delivery & Lifecycle Information:

[ArduSimple:](#)

[AS-ADP-ARDUINO-TO-RPI-00](#)