

# Magellan® MC58113

## Series Motion Control ICs



### Magellan® MC58113 Series Motion Control ICs

provide high performance motion control with an integrated digital current loop. Available as a single, one-axis IC, the MC58113 IC is a programmable device that provides positioning, velocity, and torque control for Brushless DC, DC Brush, and step motors.

#### A Powerful Motion Controller

Magellan Motion ICs are complete motion controllers requiring only an external bridge circuit or amplifier to be functional. They are driven by a host using either a parallel bus, SPI (Serial Peripheral Interface), CANbus 2.0B, or RS232/485 serial. User selectable profiling modes include S-curve, trapezoidal, velocity contouring and electronic gearing. PID servo loop compensation utilizes a 32-bit position error and includes velocity and acceleration feedforward. High performance FOC (field oriented control) provides high accuracy, ultra-low noise motor operation.

#### Easy to Use and Program

All Magellan Motion Control ICs provide a flexible and powerful instruction set to initialize and control motion axes, monitor performance, and synchronize overall machine behavior. Working with Magellan ICs, and Pro-Motion® development software makes it fast and easy to graph and analyze system performance; while C-Motion® language allows you to develop your own application using C/C++.

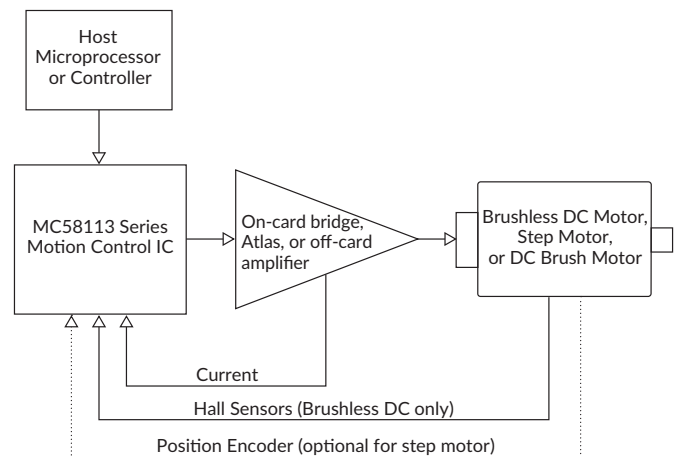
#### Flexible Offering

There are four MC58113 Series ICs, each packaged in a single 100-pin TQFP operating at 3.3 V. The MC51113 provides dedicated control of DC Brush motors, the MC53113 provides control of three-phase Brushless DC motors, the MC54113 provides control of two-phase step motors, and the MC58113 can be software selected to provide control of any of these motor types.

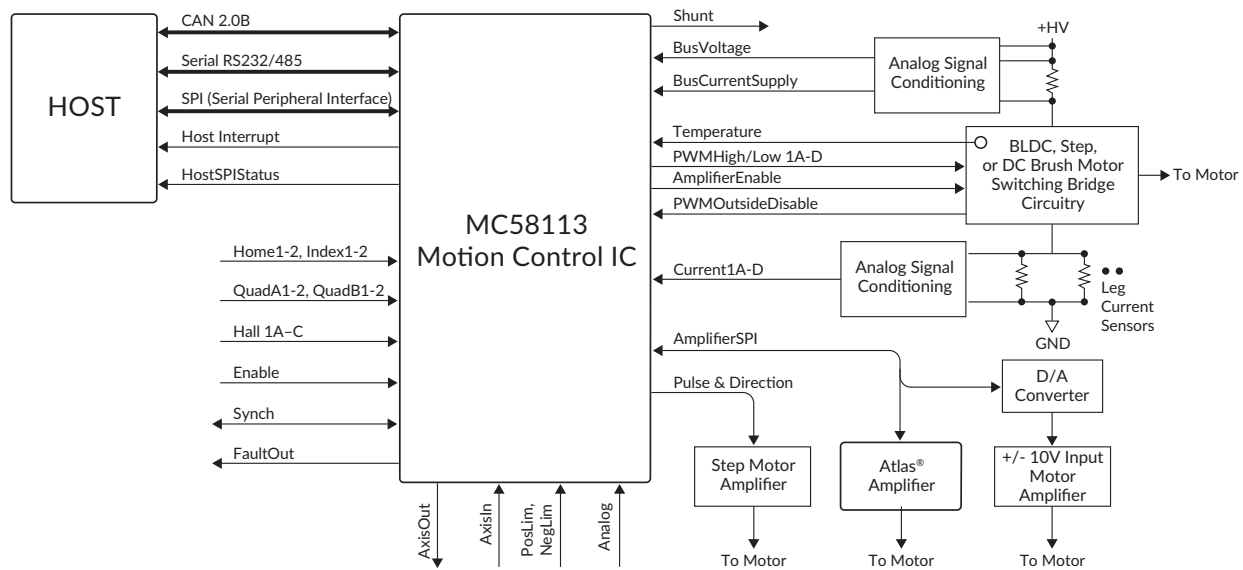
### FEATURES

- Single axis, single IC
- Position, velocity, and torque control
- Brushless DC, DC Brush, and step motor control
- S-curve, trapezoidal, velocity contouring, and electronic gearing profiles
- SPI (Serial Peripheral Interface), serial RS232/485, and CANbus communications
- 1.5 axes (primary and auxiliary encoder) control
- Advanced PID filter with velocity and acceleration feedforward
- High performance current control of each motor phase
- High/Low switching amplifier control with programmable deadtime and charge pump refresh
- Velocity, position and acceleration changes on-the-fly
- Programmable position loop time from 50  $\mu$ sec to 1.1 sec
- FOC (field oriented control)
- Incremental encoder quadrature input (up to 25 Mcounts/sec)
- Synch pin feature allows multiple axes to be synchronized to  $<1 \mu$ sec
- Internal motion trace NVRAM for performance optimization
- Overcurrent, over/undervoltage and overtemperature detect
- Directional limit switch, index, and home inputs
- Axis settled indicator, tracking window and automatic motion error detection
- General-purpose analog input
- Programmable dual biquad filters
- Programmable acceleration and deceleration values
- Compact 100-pin TQFP package

### CONFIGURATION



## TECHNICAL OVERVIEW



## MC58113 SERIES SPECIFICATIONS

Parameters	Value
<b>Configurations</b>	MC51113 - DC Brush motor MC51113 - Brushless DC motor MC54113 - Step motor MC58113 - Motor type software selectable
<b>Host communication options</b>	Serial RS232/485 CANbus 2.0B SPI (Serial Peripheral Interface)
<b>Position range</b>	-2,147,483,648 to +2,147,483,647 counts
<b>Velocity range</b>	-32,767 to 32,767 counts/sample
<b>Acceleration and deceleration range</b>	0 to 32,767 counts/sample <sup>2</sup>
<b>Jerk range</b>	0 to 1/2 counts/sample <sup>3</sup>
<b>Servo loop range</b>	50 usec to 1.1 sec
<b>Position error resolution</b>	32 bits
<b>Commutation rate</b>	20 kHz
<b>Microsteps per full step</b>	Programmable, up to 256
<b>Signal inputs axis 1</b>	QuadA/B, Index, Home, Hall A/B/C AxisIn, Pos/NegLimit
<b>Signal inputs axis 2</b>	QuadA/B, Index, Home
<b>Maximum encoder rate</b>	25 Mcounts/sec
<b>Internal trace buffer</b>	32 KB
<b>Internal NVRAM buffer</b>	2 KB
<b>Operating temperature (Ta)</b>	-40° C to 85° C
<b>Supply voltage operating range (Vcc)</b>	3.0 V to 3.6 V
<b>Package and dimensions</b>	100-pin TQFP, 14 x 14mm

## AMPLIFIER CONNECTION OPTIONS

On-board PWM amplifier circuitry	
<b>PWM output rate</b>	20, 40, or 80 kHz
<b>Current control modes</b>	FOC (field oriented control), A/B, third leg floating, voltage modefloating, voltage mode
<b>Current loop rate</b>	20 kHz
<b>PWM output modes</b>	High/Low, Sign/Magnitude, 50/50

External +/- 10V input amplifier	
<b>Amplifier SPI bus serial DAC</b>	16 bits

Pulse & direction input amplifier	
<b>Pulse and direction output rate</b>	up to 1.0 Mpulses/sec

ATLAS® Digital Amplifiers	
ATLAS® Digital amplifiers are compact single-axis amplifiers that provide high performance torque control of DC brush, brushless DC, and step motors. They are packaged in a Compact or Ultra Compact solderable module and utilize standard through-hole pins for all connections.	
<b>Voltage Input</b>	12-56 VDC
<b>Microstepping resolution</b>	256
<b>PWM frequency</b>	20, 40, 80 kHz
<b>Current Loop rate</b>	20 kHz
<b>Power rating options</b>	75W, 250W, 500W
<b>Mechanical Dimensions</b>	Ultra Compact size: 1.05" x 1.05" x .53" (27mm x 27mm x 13mm)
	Compact size: 1.52" x 1.52" x .60" (39mm x 39mm x 15mm)



# Development Tools

## 1 EASY START-UP Developers Kit

### INCLUDES

- MC58113 Developer Kit board
- Pro-Motion software
- Software Development Kit (SDK) with C-Motion
- Complete manual set
- Complete cable and prototyping connector set

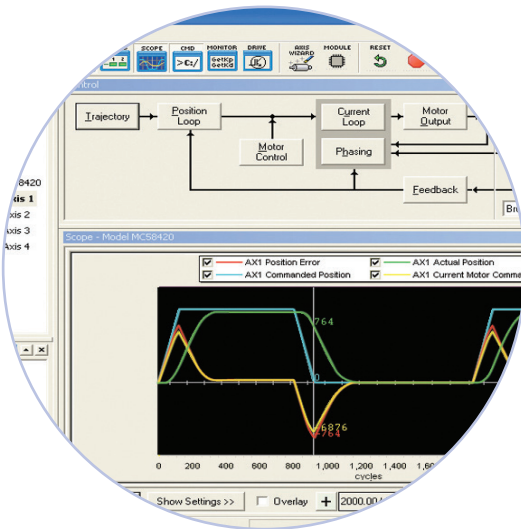


## 2 TUNE & OPTIMIZE Pro-Motion® GUI

Pro-Motion is a sophisticated, easy-to-use Windows-based exerciser program for use with PMD motion control ICs, modules, and cards.

### FEATURES

- Motion oscilloscope graphically displays processor parameters in real-time
- Autotuning
- Ability to save and load settings
- Axis wizard
- Distance and time units conversion
- Motor-specific parameter setup
- Axis shuttle performs programmable motion between two positions
- Communications monitor echoes all commands sent by Pro-Motion to the board
- Advanced Bode analysis for frequency machine response



## 3 BUILD THE APP C-Motion®

C-Motion is a complete, easy-to-use, motion programming language that includes a source library containing all the code required for communicating with PMD motion ICs, boards, and modules.

### C-MOTION FEATURES INCLUDE:

- Extensive library of commands for virtually all motion design needs
- Develop embeddable C/C++ applications
- Complete, functional examples
- Supports PC/104, serial, CAN, Ethernet, and SPI communications

```
// code for executing a profile and tracing
// the profile captured in this example could be used for tuning the PMD
// set the trace buffer wrap mode to a one time trace
PMDTraceMode(hAxis1, PMDTraceOneTime);

// set the processor variables that we want to capture
PMDTraceVariable(hAxis1, PMDTraceVariable1, PMDAxis1);
PMDTraceVariable(hAxis1, PMDTraceVariable2, PMDAxis1);
PMDTraceVariable(hAxis1, PMDTraceVariable3, PMDAxis1);

// set the trace to begin when we issue the next update command
SetTraceStart(hAxis1, PMDTraceConditionNextUpdate);

// set the trace to stop when the MotionComplete event occurs
SetTraceStop(hAxis1, PMDTraceConditionEventStatus,
PMDEventMotionCompleteBit, PMDTraceStateHigh);
SetProfileMode(hAxis1, PMDTrapezoidalProfile);

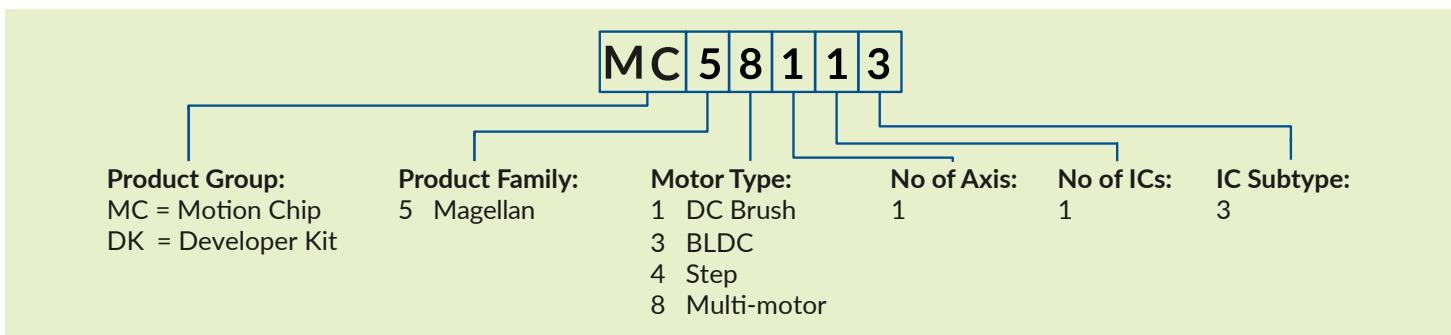
// set the profile parameters
PMDPosition(hAxis1, 200000);
PMDVelocity(hAxis1, 0x200000);
PMDAcceleration(hAxis1, 0x1000);
PMDDeceleration(hAxis1, 0x1000);
```

## PMD PRODUCT FAMILY OVERVIEW

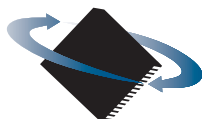
	# Axes	Motor Types	Format	Voltage	Communication	Features
<b>JUNO® VELOCITY &amp; TORQUE CONTROL ICs</b> 	1	<ul style="list-style-type: none"> <li>Brushless DC</li> <li>DC Brush</li> <li>Step Motor</li> </ul>	<ul style="list-style-type: none"> <li>64-pin TQFP</li> <li>56-pin VQFN</li> </ul>	3.3 V	<ul style="list-style-type: none"> <li>RS232/485</li> <li>CANbus</li> <li>SPI</li> </ul>	<ul style="list-style-type: none"> <li>Velocity control</li> <li>Current control</li> <li>Field oriented control</li> </ul>
<b>MAGELLAN® MOTION CONTROL ICs</b> 	1,2,3,4	<ul style="list-style-type: none"> <li>Brushless DC</li> <li>DC Brush</li> <li>Step Motor</li> </ul>	<ul style="list-style-type: none"> <li>144-pin TQFP</li> <li>100-pin TQF</li> </ul>	3.3 V	<ul style="list-style-type: none"> <li>RS232/485</li> <li>CANbus</li> <li>SPI</li> <li>Parallel</li> </ul>	<ul style="list-style-type: none"> <li>Position control</li> <li>Torque/current control</li> <li>Field oriented control</li> <li>Profile generation</li> </ul>
<b>ATLAS® DIGITAL AMPLIFIERS</b> 	1	<ul style="list-style-type: none"> <li>Brushless DC</li> <li>DC Brush</li> <li>Step Motor</li> </ul>	<ul style="list-style-type: none"> <li>20-pin solderable module</li> </ul>	12-56 V	<ul style="list-style-type: none"> <li>SPI</li> <li>Pulse and direction</li> </ul>	<ul style="list-style-type: none"> <li>Torque/current control</li> <li>Field oriented control</li> <li>MOSFET amplifier</li> </ul>
<b>ION®/CME N-SERIES DIGITAL DRIVES</b> 	1	<ul style="list-style-type: none"> <li>Brushless DC</li> <li>DC Brush</li> <li>Step Motor</li> </ul>	<ul style="list-style-type: none"> <li>Fully enclosed PCB-mounted module</li> </ul>	12-56 V	<ul style="list-style-type: none"> <li>Ethernet</li> <li>RS232/485</li> <li>CAN FD</li> <li>SPI</li> </ul>	<ul style="list-style-type: none"> <li>Position control</li> <li>Torque/current control</li> <li>Field oriented control</li> <li>Profile generation</li> <li>MOSFET amplifier</li> <li>Downloadable user code</li> </ul>
<b>ION® 500 &amp; 3000 DIGITAL DRIVES</b> 	1	<ul style="list-style-type: none"> <li>Brushless DC</li> <li>DC Brush</li> <li>Step Motor</li> </ul>	<ul style="list-style-type: none"> <li>Fully enclosed cable-connected module</li> </ul>	12-56 V 20-195 V	<ul style="list-style-type: none"> <li>Ethernet</li> <li>RS232/485</li> <li>CANbus</li> </ul>	<ul style="list-style-type: none"> <li>Position control</li> <li>Torque/current control</li> <li>Field oriented control</li> <li>Profile generation</li> <li>MOSFET amplifier</li> <li>Downloadable user code</li> </ul>
<b>PRODIGY® MOTION BOARDS</b> 	1,2,3,4	<ul style="list-style-type: none"> <li>Brushless DC</li> <li>DC Brush</li> <li>Step Motor</li> </ul>	<ul style="list-style-type: none"> <li>Machine Controller</li> <li>PC/104</li> <li>Standalone</li> </ul>	<ul style="list-style-type: none"> <li>5 V: PC/104 and Standalone</li> <li>12-56 V: Machine Controller</li> </ul>	<ul style="list-style-type: none"> <li>Ethernet</li> <li>RS232/485</li> <li>CANbus</li> <li>PC/104 bus</li> </ul>	<ul style="list-style-type: none"> <li>Position control</li> <li>Torque/current control</li> <li>Field oriented control</li> <li>Profile generation</li> <li>Downloadable user code</li> </ul>

C-Motion® is the common motion language for all Performance Motion Devices products.

## INFORMATION ORDERING



To place an order email [purchaseorders@pmdcorp.com](mailto:purchaseorders@pmdcorp.com). For questions email [support@pmdcorp.com](mailto:support@pmdcorp.com)



**PERFORMANCE  
MOTION DEVICES**  
MOTION CONTROL AT ITS CORE

1 Technology Park Dr, Westford, MA 01886  
Tel: 978.266.1210 Fax: 978.266.1211  
e-mail: [info@pmdcorp.com](mailto:info@pmdcorp.com)  
[www.pmdcorp.com](http://www.pmdcorp.com)

### About Performance Motion Devices

Performance Motion Devices (PMD) is a worldwide leader in motion control ICs, boards and modules. Dedicated to providing cost-effective, high performance motion systems to OEM customers, PMD utilizes extensive in-house expertise to minimize time-to-market and maximize customer satisfaction.

ATLAS, ION, Juno, Magellan, Navigator, Pilot, Prodigy, C-Motion and Pro-Motion are trademarks of Performance Motion Devices, Inc. All other trade names, brand names and company names are the property of their respective owners. 2021 Performance Motion Devices, Inc.

# Mouser Electronics

Authorized Distributor

Click to View Pricing, Inventory, Delivery & Lifecycle Information:

Performance Motion Devices:

[DK51113](#) [DK53113](#) [DK54113](#) [DK58113](#) [DK58113S](#)