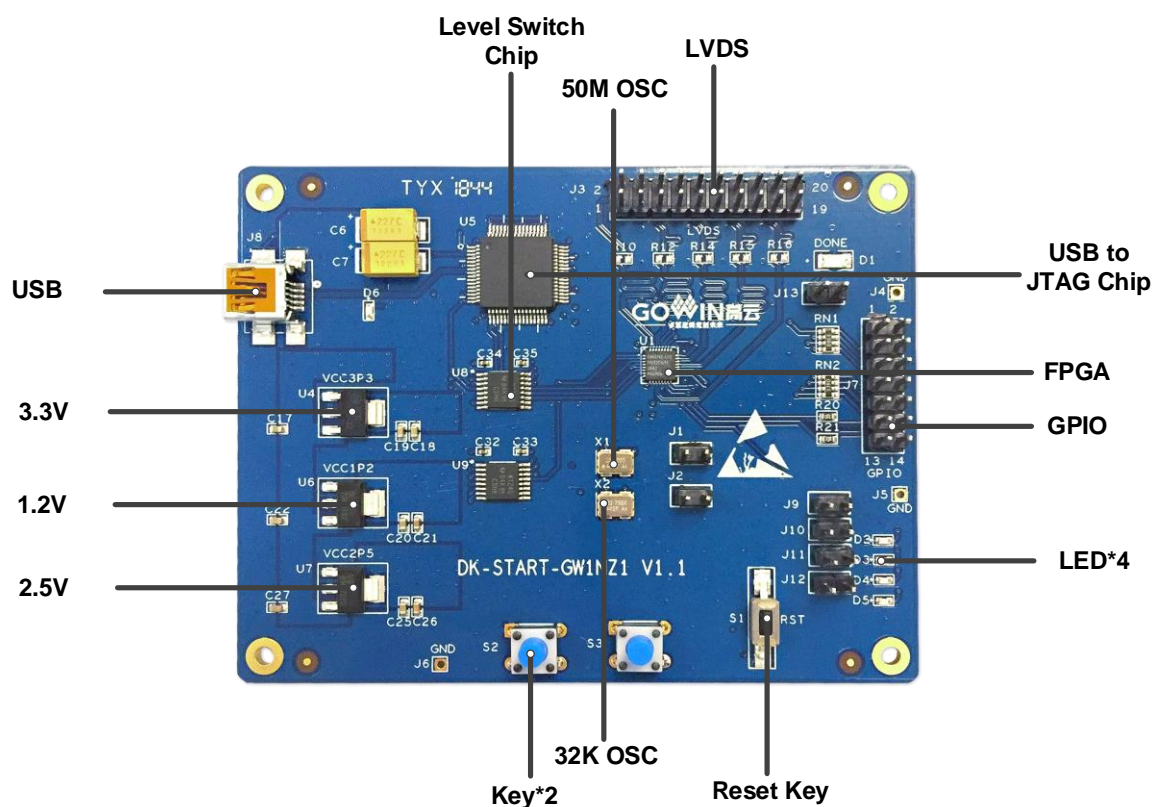


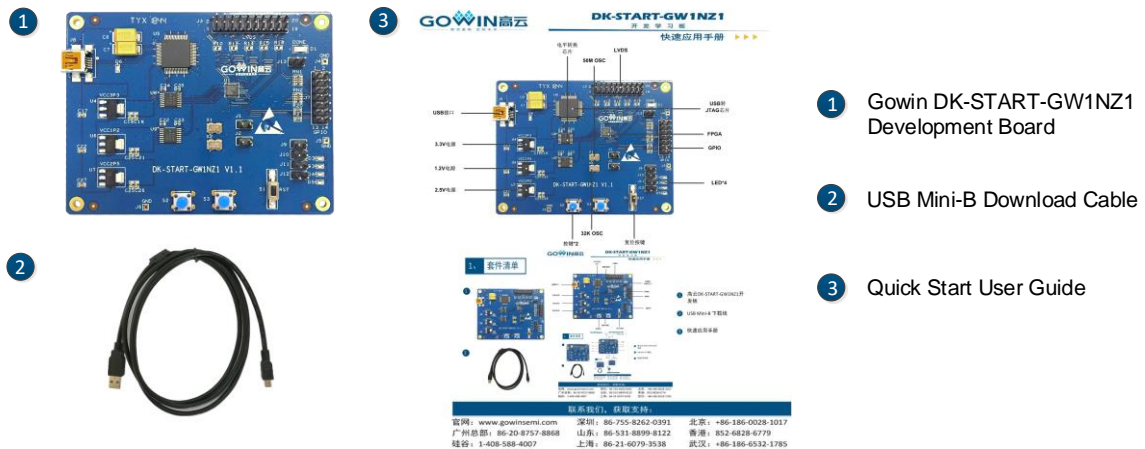
DK-START-GW1NZ1 Development Board Quick Start User Guide

Figure 1 PCB Components



Kit List

Figure 2 Development Board Kit



Contact Us for Technical Support:

- Website: www.gowinsemi.com.en	Shenzhen: 86-755-8262-0391	Beijing: +86-186-0028-1017
- Guangzhou Headquarters: 86-20-8757-8868	Shandong: 86-531-8899-8122	Hong Kong: 852-6828-6779
Silicon Valley: 1-408-588-4007	Shanghai: 86-21-6079-3538	Wuhan: +86-186-6532-1785

Introduction

Thank you very much for taking DK-START-GW1NZ1 as the development & learning platform. This user guide can help you install the required software, compile the Demo, and download it to the development board to test so as to be familiar with the development flow.

Install Software

Install Gowin EDA software (Gowin YunYuan Software) to create, compile and download FPGA Demo program. Download the EDA software, apply for a license, and obtain software user guide at GOWINSEMI website: <https://www.gowinsemi.com/en/support/home/>. For details on the software installation method and usage, please refer to [SUG100](#), Gowin YunYuan Software User Guide.

Development Board Power-on Test

The test program has been downloaded into the internal FLASH before the delivery of DK-START-GW1NZ1 development board. And the development board can be checked whether to work when it is powered on.

Connect the download cable of the USB Mini-B to the USB interface, the internal FLASH is loaded successfully if the power indicator and DONE light are on. After loading is done, four green LED lights will be blinking, indicating that the development board can work.

Compile Demo Program

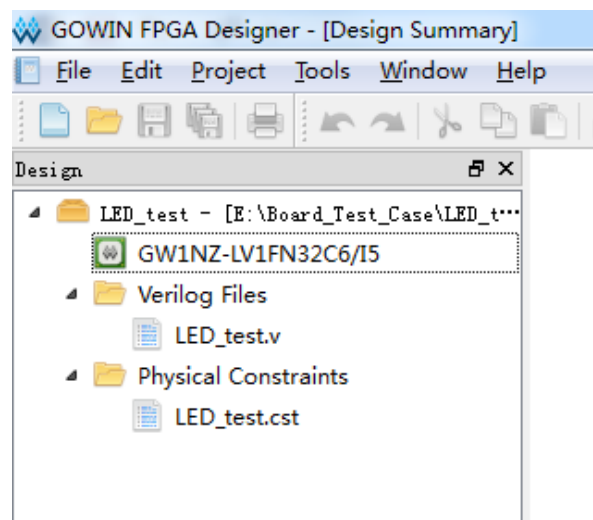
The LED test program is to demonstrate four LEDs blinking. Users can download the corresponding demo at Gowinsemi website:

<https://www.gowinsemi.com/en/support/database/>. Save the project in the directory with no Chinese characters. Open and compile this demo using Gowin YunYuan software.

1. Open the "LED_test.gprj" project and the follows are displayed in the "Design" window:

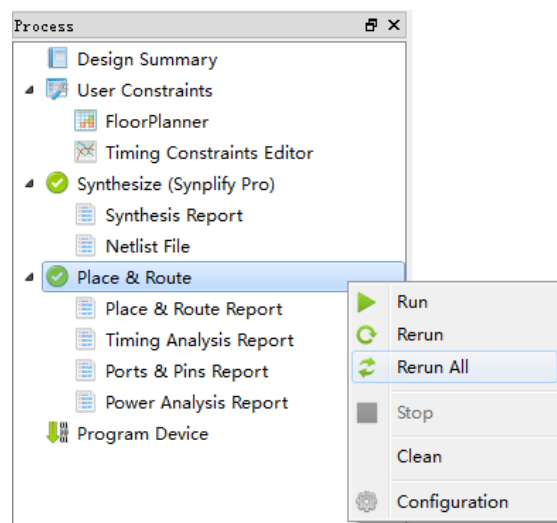
- GW1NZ-LV1FN32C6/I5: Gowin FPGA device part number;
- LED_test.v: Verilog code;
- LED_test.cst: Physical constraints file.

Figure 3 Design



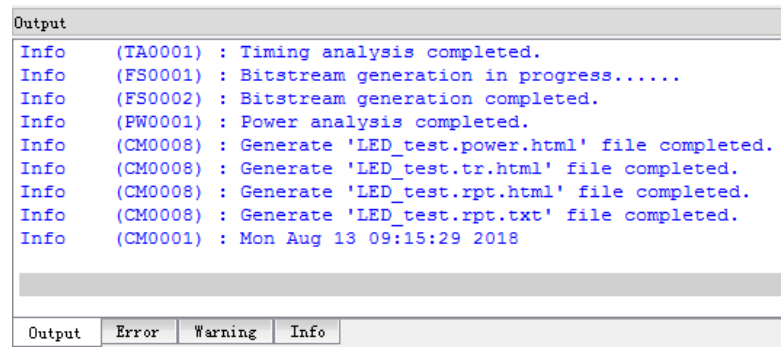
2. Right click "Place & Route" in the "Process" window and select "Rerun All".

Figure 4 Select Rerun All



- After compilation, the following information will be displayed. The generated bitstream file is saved in: ..LED_test\impl\pnr\LED_test.fs.

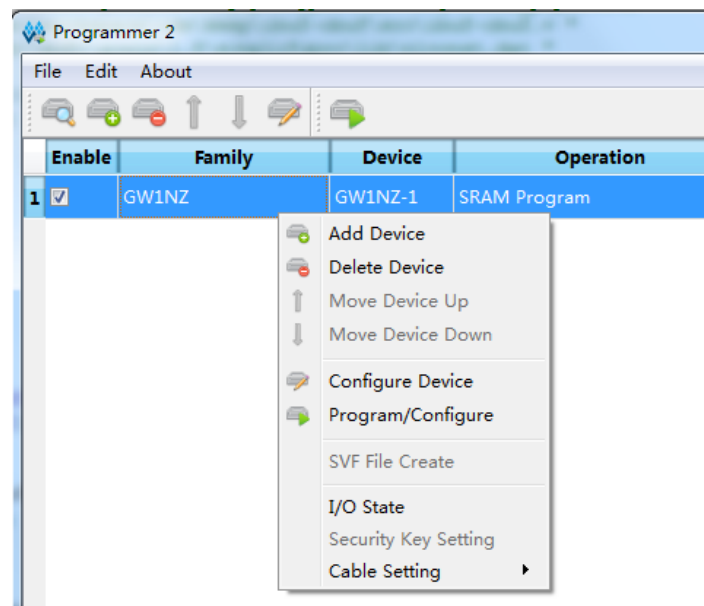
Figure 5 Compiling Completed



Download and Run

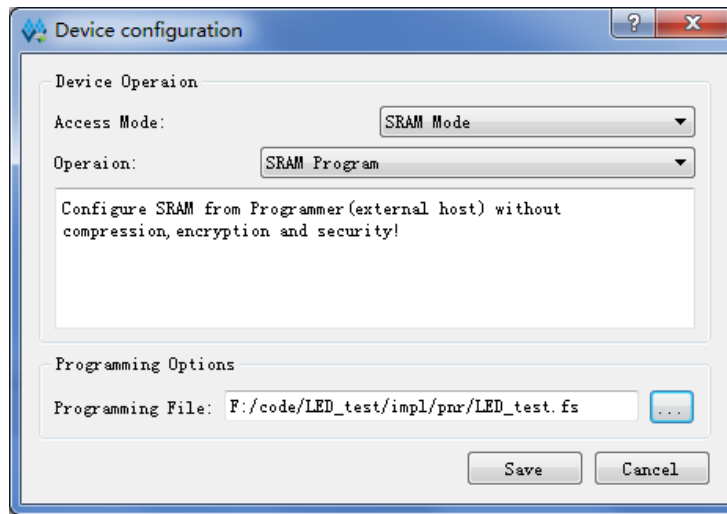
- Connect the development board and PC using the download cable, turn on the power switch, and double-click the Program Device in the "Process" window. The "Programmer" window will pop up, right-click on the device list, and select "Configure Device", the "Device configuration" dialog box will pop up.

Figure 6 Programmer



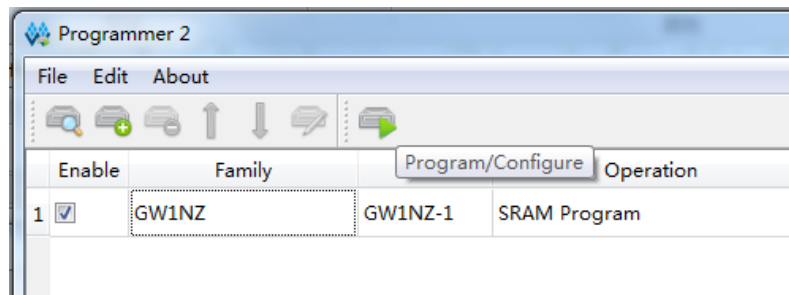
2. Set the download mode as shown below and specify the bitstream file path.

Figure 7 Device Configuration



3. After configuration, click the "Program/Configure" to download the program. After finishing, the four LEDs of the development board will blink simultaneously.

Figure 8 Program/Configure



Support and Feedback

Gowin Semiconductor provides customers with comprehensive technical support. If you have any questions, comments, or suggestions, please feel free to contact us directly by the following ways.

Website: www.gowinsemi.com

E-mail: support@gowinsemi.com

Tel: 00 86 0755 82620391

Revision History

Date	Version	Description
02/26/2020	1.0E	Initial version published.

Copyright© 2020 Guangdong Gowin Semiconductor Corporation. All Rights Reserved.

No part of this document may be reproduced or transmitted in any form or by any denotes, electronic, mechanical, photocopying, recording or otherwise, without the prior written consent of GOWINSEMI.

Disclaimer

GOWINSEMI[®], LittleBee[®], Arora, and the GOWINSEMI logos are trademarks of GOWINSEMI and are registered in China, the U.S. Patent and Trademark Office, and other countries. All other words and logos identified as trademarks or service marks are the property of their respective holders, as described at www.gowinsemi.com. GOWINSEMI assumes no liability and provides no warranty (either expressed or implied) and is not responsible for any damage incurred to your hardware, software, data, or property resulting from usage of the materials or intellectual property except as outlined in the GOWINSEMI Terms and Conditions of Sale. All information in this document should be treated as preliminary. GOWINSEMI may make changes to this document at any time without prior notice. Anyone relying on this documentation should contact GOWINSEMI for the current documentation and errata.

Mouser Electronics

Authorized Distributor

Click to View Pricing, Inventory, Delivery & Lifecycle Information:

[GOWIN Semiconductor:](#)

[DK-START-GW1NZ1](#)