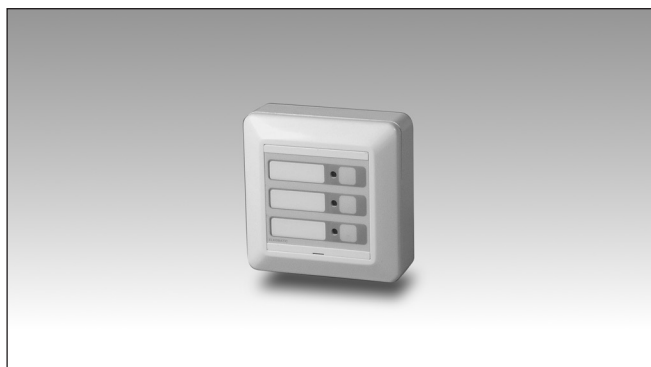


# smart-house Light Switch Type BEW-LSx-U

CARLO GAVAZZI



- Light switch for building automation application
- 1, 2 or 3 individually programmable pushbutton inputs
- 1, 2 or 3 programmable LED's
- Supplied by smart-house bus, no external supply required
- Flush or surface mounting on Elko wall box and frame

## Product Description

The BEW-LSx-U are light switches with 1, 2 or 3 buttons and 1, 2 or 3 LED outputs. The light switch is part of the smart-house concept for building automation applications and can

be used to control lights, roller blinds and all other functions supported by the smart-house controller. It is fully programmable via the SH tool.

## Ordering Key

**B E W L S 3 U**

smart-house

Elko Compatibility

White

Light switch

Switch number

Smart Dupline®

## Type Selection

Housing	Colour	LEDs	Supply by smart-house
55 x 55 mm	White	3 red	<b>BEW-LS3-U</b>
55 x 55 mm	White	2 red	<b>BEW-LS2-U</b>
55 x 55 mm	White	1 red	<b>BEW-LS1-U</b>

## Input Specifications

Key Pad

1, 2 or 3 push-buttons

## Output Specifications

LED

1, 2 or 3 red

## Dupline® Specifications

<b>Voltage</b>	8.2 V
<b>Maximum Dupline® voltage</b>	10 V
<b>Minimum Dupline® voltage</b>	4.5 V
<b>Maximum Dupline® current</b>	
BEW-LS1-U	1.3 mA
BEW-LS2-U	2.0 mA
BEW-LS3-U	2.6 mA

## Supply Specifications

<b>Power supply</b>	Supplied by smart-house bus
---------------------	-----------------------------



General Specifications

Address assignments / channel programming	If it is used with the SH2WEB24 the address assignment is automatic: the controller recognises the module through the SIN (Specific Identification Number) that has to be inserted in the SH tool. If it is used with BH8-CTRL-230 the channels have to be programmed with the BGP-COD-BAT	Dimensions Mounting Material Colour	84 x 84 x 28.5 mm Elko mechanics ABS White
		Weight	65 g
		CE Marking	Yes
Environment		EMC	
Degree of protection	IP 20	Immunity	EN 61000-6-2
Pollution degree	3 (IEC 60664)	- Electrostatic discharge	EN 61000-4-2
Operating temperature	-20° to +50°C (-4° to 140°F)	- Radiated radiofrequency	EN 61000-4-3
Storage temperature	-30° to +60°C (-22° to 158°F)	- Burst immunity	EN 61000-4-4
Humidity (non-condensing)	20 to 80% RH	- Surge	EN 61000-4-5
		- Conducted radio frequency	EN 61000-4-6
		- Power frequency magnetic fields	EN 61000-4-8
		- Voltage dips, variations, interruptions	EN 61000-4-11
Connection		Emission	EN 61000-6-3
Screwless detachable	0.2 to 1.5 mm²	- Conducted and radiated emissions	CISPR 22 (EN55022), cl. B
D+	Signal	- Conducted emissions	CISPR 16-2-1 (EN55016-2-1)
D-	GND	- Radiated emissions	CISPR 16-2-3 (EN55016-2-3)
Housing			

Mode of Operation

The BEW-LSx-U is fully programmable via the SH tool. Each push-button can be individually associated to one or more of the functions supported by the smart-house system.

BEW-LSx-U connected to the SH2WEB24

**Coding/Addressing**  
If the light switch module is connected to the SH2WEB24 controller, no addressing is needed since

the module is provided with a specific identification number (SIN): the user has only to insert the SIN in the SH tool when creating the system configuration.

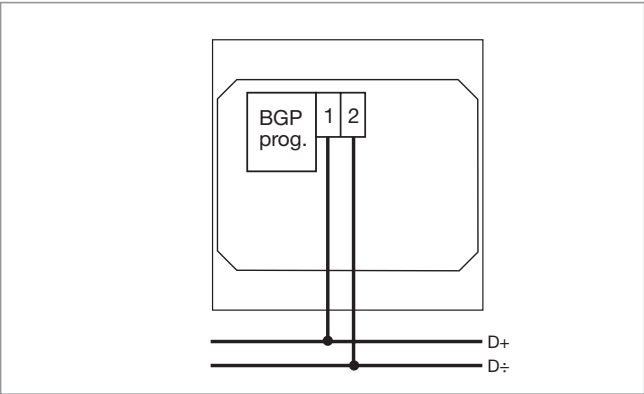
**LED programming**  
Also the LEDs are configurable via SH Tool:  
•The red LEDs can be individually programmed as function status indication. If the Dupline® bus is faulty or missing, the LED will be OFF.

BEW-LSx-U connected to the BH8-CTRLX-230

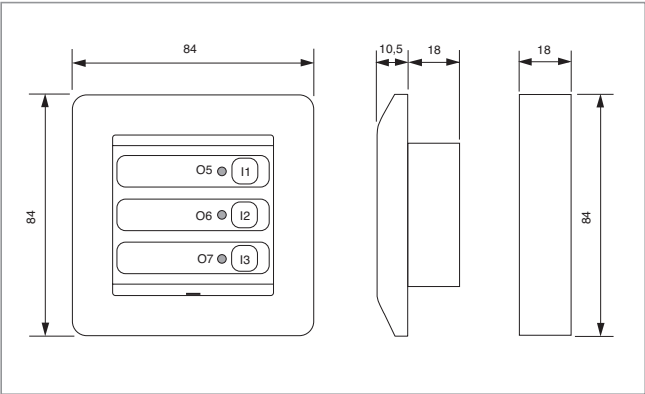
**Coding/Addressing**  
If the light switch module is connected to the BH8-CTRLX-230 controller, the user has to program the Dupline® channels using the BGP-COD-BAT: these modules have up to 3 inputs (push buttons) and up to 3 outputs (LEDs) channels.  
I/O 1-3: push button 1-3  
I/O 5-7: LED 1-3

**LED programming**  
•The red LEDs can be individually programmed as function status indication. If the Dupline® bus is faulty or missing, the LED will be OFF.

Wiring Diagrams



Push-buttons/Dimensions (mm)



# Mouser Electronics

Authorized Distributor

Click to View Pricing, Inventory, Delivery & Lifecycle Information:

[Carlo Gavazzi:](#)

[BEW-LS3-U](#) [BEW-LS1-U](#) [BEW-LS2-U](#)