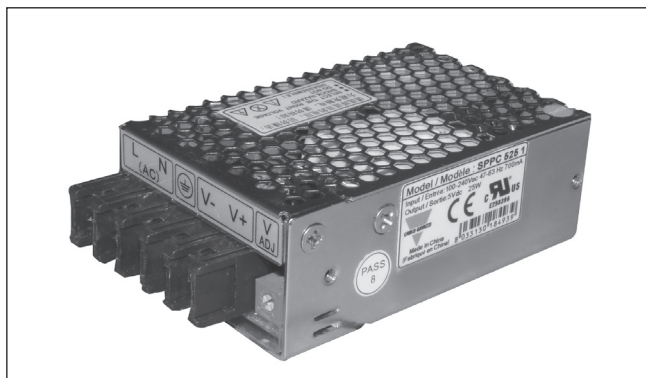


# Switching Power Supply Enclosed Type SPPC 25W Series Single Output

CARLO GAVAZZI



- Universal AC input range
- Miniature size, long life, and high power density, efficiency and reliability
- Withstand 300VA surge input for 5 sec.
- Output protections: OLP/OVP/SCP
- Wide operating ambient temperature (-25°C ~ 70°C), 100%@50°C, 60%@70°C
- PCB soldering side with conformal coating

## Product Description

Enclosed Switching Power Supply for AC DC and DC DC power requirements. The new SPPC family provides flexible OEM power solutions for industrial control and automation applications,

which in the case of the SPPC 25W ranges from 5V to 24V. All the range carries full certification offering a wide range of universal input and screw terminal connections.

## Ordering Key

**SP PC XX 25 1**

Power supply model \_\_\_\_\_  
Panel mounted \_\_\_\_\_  
Output voltage \_\_\_\_\_  
Output power \_\_\_\_\_  
Input type (single phase) \_\_\_\_\_

## Approvals



## Output Performances

MODEL NO.	INPUT VOLTAGE	OUTPUT VOLTAGE	VOLTAGE ADJ	RATED CURRENT	VOLTAGE ACCURACY
Single Output Models					
SPPC 525 1	90VAC~264VAC	5V	-5%~+10%	5 A	±2.0%
SPPC 1225 1	90VAC~264VAC	12V	-5%~+10%	2.1 A	±1.0%
SPPC 2425 1	90VAC~264VAC	24V	-5%~+10%	1.1 A	±1.0%

## Output Data

Current range		Load regulation	± 2.0% (SPPC 525 1) ± 1.0% (SPPC 1225 1, SPPC 2425 1)
SPPC 525 1	0~5A	Turn on time (full resistive load)	<2.0s (115VAC input, Full load); <1.0s (230VAC input, Full load)
SPPC 1225 1	0~2.1A	Temperature coefficient	±0.03%/°C
SPPC 2425 1	0~1.1A	Hold up time	>14ms (115VAC input, Full load); >30ms (230VAC input, Full load)
Ripple and noise -25°~70°C		Overshoot and undershoot	<5.0%
*Note			
SPPC 525 1	<50mV		
SPPC 1225 1; SPPC 2425 1	<120mV		
Line regulation	± 0.5%		

\* Note: Measured at 20MHz of bandwidth by using a 12" twisted pair-wire terminated with a 0.1uF & 10uF parallel capacitor.

## Input Data All specifications are at nominal values, full load, 25°C unless otherwise noticed

<b>Voltage range</b>	90 ~ 264VAC 127 ~ 370VDC	<b>AC current (max.)</b>	0.7A
<b>Frequency range</b>	47-63Hz	<b>Inrush current (cold start)</b>	
<b>Efficiency</b>		<b>115VAC</b>	20A
SPPC 525 1	115VAC, 76%; 230VAC 78%	<b>230VAC</b>	40A
SPPC 1225 1	115VAC, 80%; 230VAC 82%	<b>Leakage current</b>	
SPPC 2425 1	115VAC, 84%; 230VAC 85%	<b>Input-Output</b>	<0.25mA
		<b>Input-PG</b>	<0.75mA

## Controls and Protection

<b>Overload (OLP)</b>	105%~150% of rated output current, hiccup mode, auto recovery.	<b>Output short circuit (SCP)</b>	Long-term mode, auto recovery.
<b>Over voltage (OVP)</b>	105%~150% of rated output voltage, constant voltage		

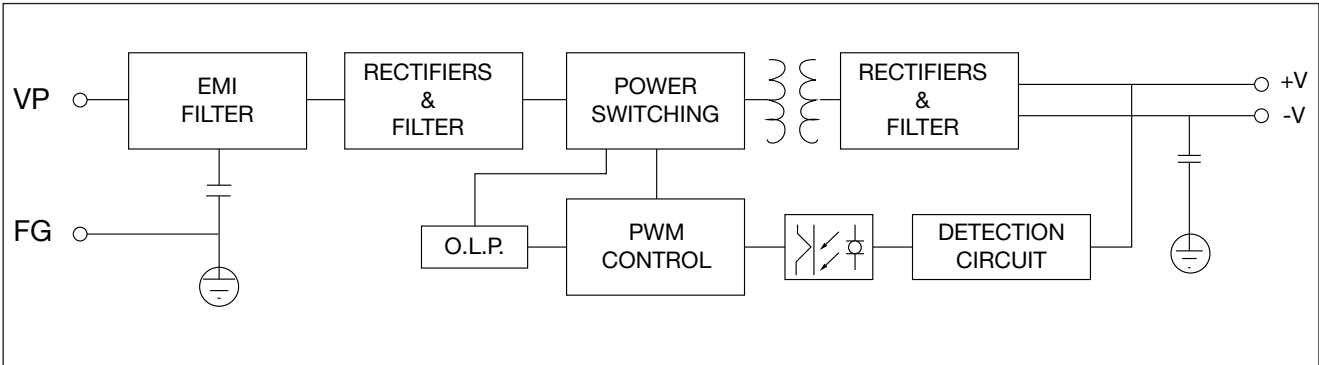
## General Data All specifications are at nominal values, full load, 25°C unless otherwise noticed

<b>Ambient temperature</b>	-25°C to +70°C	<b>Switching Frequency</b>	65kHz
<b>Relative humidity</b>	20%~90%RH	<b>MTBF (MIL-HDBK-217F)</b>	More than 200.000 hrs
<b>Storage</b>	-40°C ~ +85°C; 10% ~ 95% RH no condensing.	<b>Case material</b>	Metal
<b>Cooling</b>	Free air convection	<b>Dimensions LxWxD</b>	79 x 51 x 28.8 mm
<b>Insulation resistance I/O</b>	≥100M ohms	<b>Packing</b>	48 PCS/CTN. G.W: 10.4kgs 0.03CBM

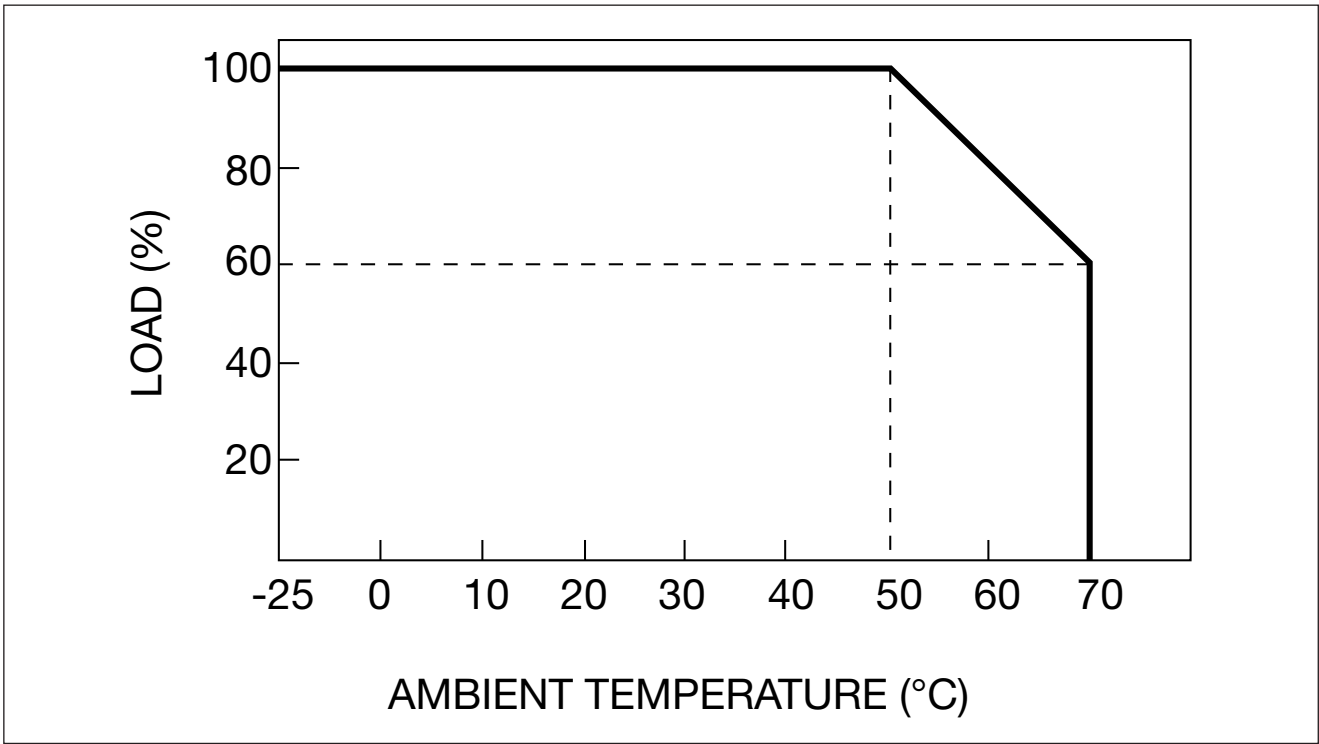
## Norms and Standard

<b>Safety standard</b>	UL60950-1 2 <sup>nd</sup> Ed, IEC 60950-1:2005 (2 <sup>nd</sup> Ed) ; EN60950-1:2006	<b>Harmonic Current</b>	Compliance to EN61000-3-2, 3
<b>Withstand voltage</b>	Primary-Secondary: 3.0kVAC; ≤10mA. Primary-PG: 1.5kVdc; ≤10mA. Secondary PG: 0.5kVdc	<b>EMC Immunity</b>	Compliance to EN61000-4-2, 3, 4, 5, 6, 8, 11; EN55024, EN61000-6-2 heavy industry level.

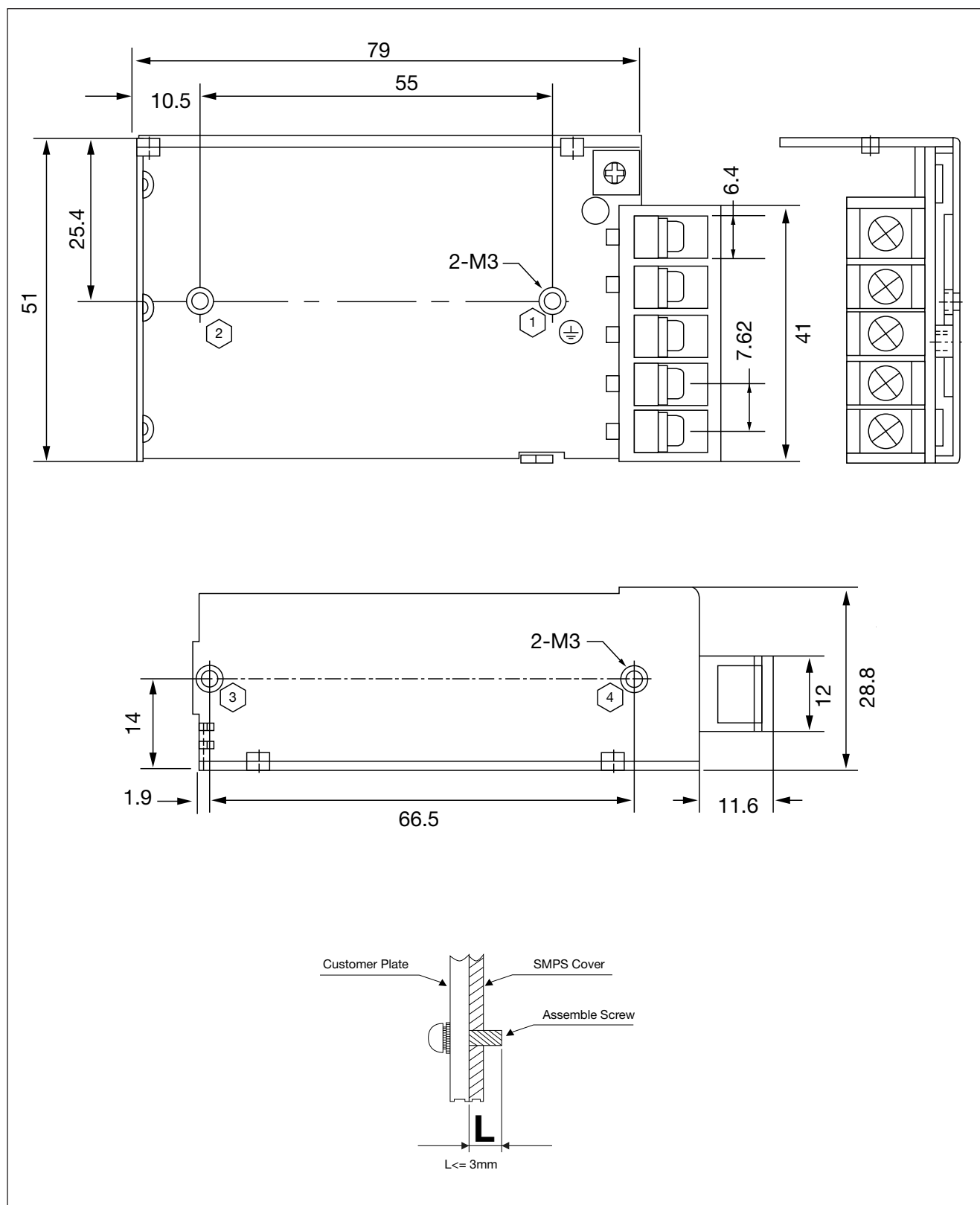
**Block Diagram**



**Derating Curve**



## Mechanical Drawing



# Mouser Electronics

Authorized Distributor

Click to View Pricing, Inventory, Delivery & Lifecycle Information:

[Carlo Gavazzi:](#)

[SPPC12251](#) [SPPC24251](#) [SPPC5251](#)