

# Smart Dupline® Dupline Generator Type SH2DUG24



- Dupline® master channel generator
- 2-DIN housing
- Up to 7 SH2DUG24 can be connected on the same network, taking into consideration the sum of SH2DUG24, SH2MCG24 and SH2WBU230
- Connection to SH2WEB24 via internal bus or terminals via the high speed bus.

## Product Description

The master channel generator SH2DUG24 provides the channel generator output drive for a "traditional" Dupline® network in a smart-Dupline® system, which is controlled by the Sx2WEB24. Together with a Sx2WEB24, it substitutes a BH8-CTRLX-230, a BH8-CTRLZ-230 or a G38x0xx master generator. Each Sx2WEB24 can be connected up to 7 master channel generators (the sum of SH2MCG24, SH2DUG24 and SH2WBU230 is 7) in order to have 7 Dupline® and smart Dupline® networks. All the devices are connected via an internal bus if they are in the same cabinet, or via terminals if they are mounted on different cabinets. Each SH2DUG24 must have an address that has to be programmed using the Sx tool.

Ordering Key

SH 2 DUG 24

smart-house

2-DIN housing

Dupline generator

Power supply

## Type Selection

|         |          |                      |
|---------|----------|----------------------|
| Housing | Mounting | Supply: 15 to 30 VDC |
| 2 DIN   | DIN-rail | SH2DUG24             |

## Supply Specifications

|                                 |   |
|---------------------------------|---|
| Power supply                    | Overvoltage cat. II<br>(IEC 60664-1, par. 4.3.3.2)                    |
| Rated operational voltage       | 15 to 24 VDC ± 20%  |
| Operational voltage range       | 10 to 30 VDC (ripple included)  |
| Rated operational power         | 6.5 W   |
| Protection for reverse polarity | Yes   |
| Connection                      | 2xA1 (+) and 2xA2 (-)-<br>(2 pairs of terminals internally connected) |
| Power on delay                  | Typ. 4 s  |
| Power off delay                 | 1 s   |

## Dupline® Specifications

|  |                              |
|--|------------------------------|
| Voltage  | 8.2 V                        |
| Maximum Dupline® voltage   | 10 V                         |
| Minimum Dupline® voltage   | 4.5 V                        |
| Maximum Dupline® current   | 450 mA @ 25°<br>350 mA @ 40° |
| Terminal   | D+ and D-                    |
| <b>Note:</b> The Dupline® bus is located on the upper connector and also on the local bus connector on the right side of the module. |                              |

## General Specifications

|  |  |   |                             |
|--|--|---|-----------------------------|
| <b>Installation category</b>                           | Cat. II  | <b>Housing</b>                            |                             |
| <b>Dielectric strength</b><br>Power supply to Dupline® | 500 V AC for 1 min.<br>(IEC60664-1, TAB. A.1)  | Dimensions                                | 2-DIN module                |
|  |  | Material                                  | Noryl                       |
| <b>Fail-safe condition</b>                             | If the SH2DUG24 loses the communication with the Sx2WEB24, the Dupline® output will be switched off. | <b>Weight</b>                             | 150 g                       |
|  |  | <b>Approvals</b>                          | cULus, according to UL60950 |
| <b>Environment</b>                                     |  | <b>CE Marking</b>                         | Yes                         |
| Degree of protection                                   |  | <b>EMC</b>                                |                             |
| Front  | IP 50  | Immunity                                  | EN 61000-6-2                |
| Screw terminal   | IP 20  | - Electrostatic discharge                 | EN 61000-4-2                |
| Pollution degree                                       | 2 (IEC 60664-1, par. 4.6.2)  | - Radiated radiofrequency                 | EN 61000-4-3                |
| Operating temperature                                  | -20° to +50°C (-4° to 122°F)   | - Burst immunity                          | EN 61000-4-4                |
| Storage temperature                                    | -50° to +85°C (-58° to 185°F)  | - Surge                                   | EN 61000-4-5                |
| Humidity (non-condensing)                              | 20 to 80% RH   | - Conducted radio frequency               | EN 61000-4-6                |
| <b>LED's indication</b>                                |  | - Power frequency magnetic fields         | EN 61000-4-8                |
| Bus LED  | 1 yellow   | - Voltage dips, variations, interruptions | EN 61000-4-11               |
| Power LED  | 1 green  | Emission                                  | EN 61000-6-3                |
| Dupline® LED   | 1 yellow   | - Conducted and radiated emissions        |                             |
| <b>Connection</b>                                      |  | - Conducted emissions                     | CISPR 22 (EN55022), cl. B   |
| Terminal   | 12 screw-type  | - Radiated emissions                      | CISPR 16-2-1 (EN55016-2-1)  |
| Cable cross-section area                               | Max. 1.5 mm <sup>2</sup>   |   | CISPR 16-2-3 (EN55016-2-3)  |
| Tightening torque                                      | 0.4 Nm / 0.8 Nm  |   |                             |

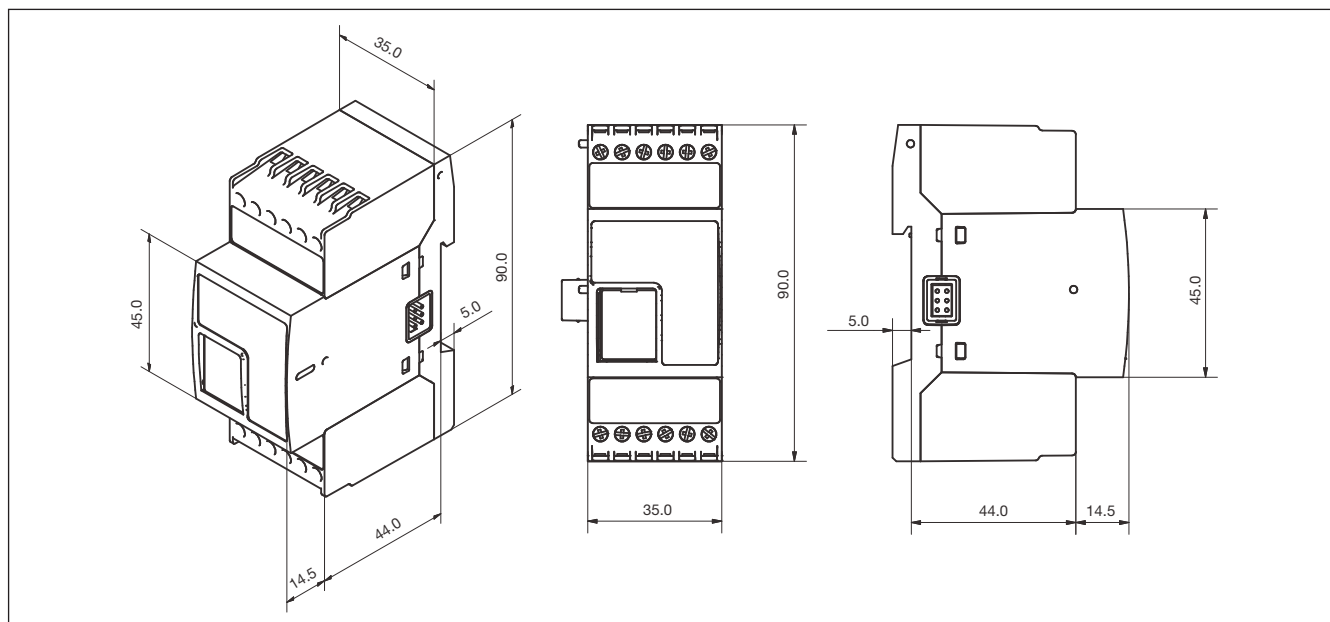
## HS Bus Specifications

|                          |  |
|--------------------------|--|
| <b>Bus type</b>          | RS485 high speed bus   |
| <b>Protocol</b>          | Internal proprietary protocol  |
| <b>Number of slave</b>   | Max 7  |
| <b>Connection</b>        | By local bus (left and right connectors) or terminals GND, A(-), B(+).<br>T1, T2: termination inputs. They have to be short-circuited on the last module of the network.<br>See wiring diagrams. |
| <b>Addressing method</b> | The address of the SH2DUG24 is defined in the Sx tool, and then assigned to it by the Sx2WEB24 according to the SIN.   |

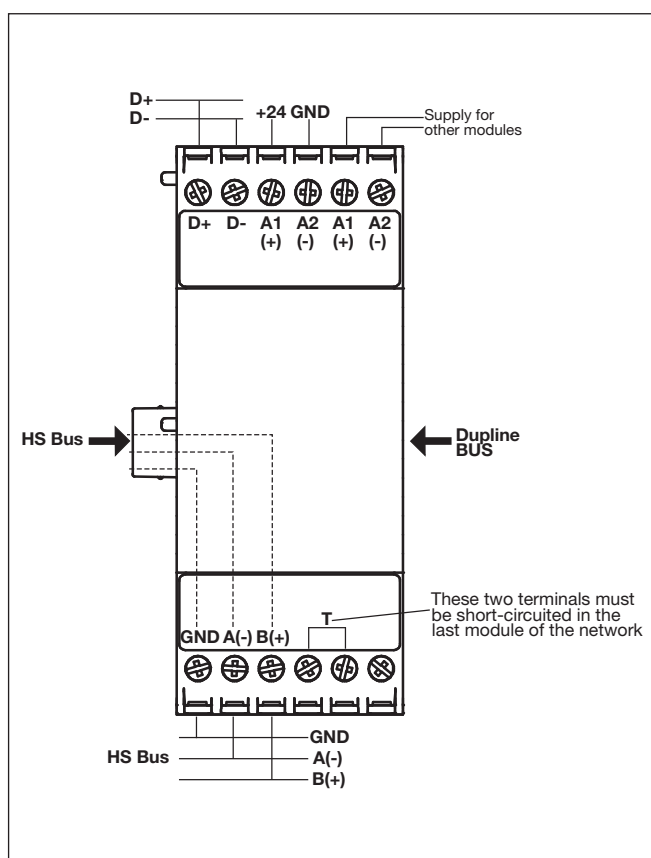
## LEDs Indication

|   |   |
|---|---|
| <b>Green LED: ON.</b><br>ON: Supply ON<br>OFF: Supply OFF   | <b>Bus</b><br>OFF: no communication is present on the HS bus<br>ON: communication error on HS bus<br>Flashing: communication OK on HS bus |
| <b>Yellow LEDs</b><br><b>Dupline® bus</b><br>ON: the Dupline® bus is working properly<br>Flashing: there is a fault on the Dupline® bus<br>OFF: the Dupline® bus is OFF or not connected. |   |

## Dimensions



## Wiring Diagrams



# Mouser Electronics

Authorized Distributor

Click to View Pricing, Inventory, Delivery & Lifecycle Information:

[Carlo Gavazzi:](#)

[SH2DUG24](#)