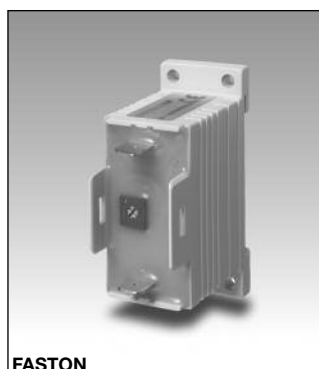


Timers Interval Type EBS

CARLO GAVAZZI



SCREW



FASTON

- Fail-safe two-wire connection
- Low-cost
- Multi-voltage: 24-230 VAC
- Interval timer
- Time range: 0,5 s - 10 m
- Knob-adjustable time setting
- Output: SCR 10-500 mA (screws) and SCR 10-700mA (Fast-ON)
- For mounting on DIN-rail in accordance with DIN/EN 50 022
- 22,5 mm small Euronorm housing

Product Description

Small, low cost monofunction timer with adjustable time setting. 2-wire connection for easy and fail-safe use (see diagram). For mounting on DIN-rail or

directly on surface by screw. The timer is used e.g. with industrial relays or 3-phase contactors.

Ordering Key

EBS S M23 10S F

Housing	_____
Function	_____
Small E-line	_____
Output	_____
Power supply	_____
Time range	_____
Fast-ON connection	_____

Type Selection

Mounting	Output	Time range	Connection	Supply: 24 - 230 VAC
For DIN-rail or for screw	SCR	0.5 - 10 s	Screws	EBS S M23 10S
	SCR	0.1 - 1 m	Screws	EBS S M23 1M
	SCR	1 - 10 m	Screws	EBS S M23 10M
For DIN-rail or for screw	SCR	0.5 - 10 s	Fast-ON	EBS S M23 10S F
	SCR	0.1 - 1 m	Fast-ON	EBS S M23 1M F
	SCR	1 - 10 m	Fast-ON	EBS S M23 10M F

Time Specifications

Time ranges	
10 s	0.5 - 10 s
1 m	0.1 - 1 m
10 m	1 - 10 m
Time range accuracy	Max. setting: actual time ≥ max. set time min. setting: actual time ≤ min. set time
Repeat accuracy	≤ 0.2%
Time variation	
Within rated power supply and ambient temperature	≤ 0.1%/V ≤ 0.2%/°C
Reset	
Time and output	Power supply interruption ≥ 200 ms

Output Specifications

Output	SCR
Output current	
Maximum load current (screw terminals)	500 mA
(Fast-ON connection)	700 mA
Maximum current for 100 ms (screw terminals)	5.5 A
(Fast-ON connection)	7 A
Minimum load current	10 mA
Leakage current	≤ 3.5 mA @ 230 V typ.: 2 mA
Voltage drop	≤ 8 VAC typ.: 5 VAC @ 50 mA

Supply Specifications

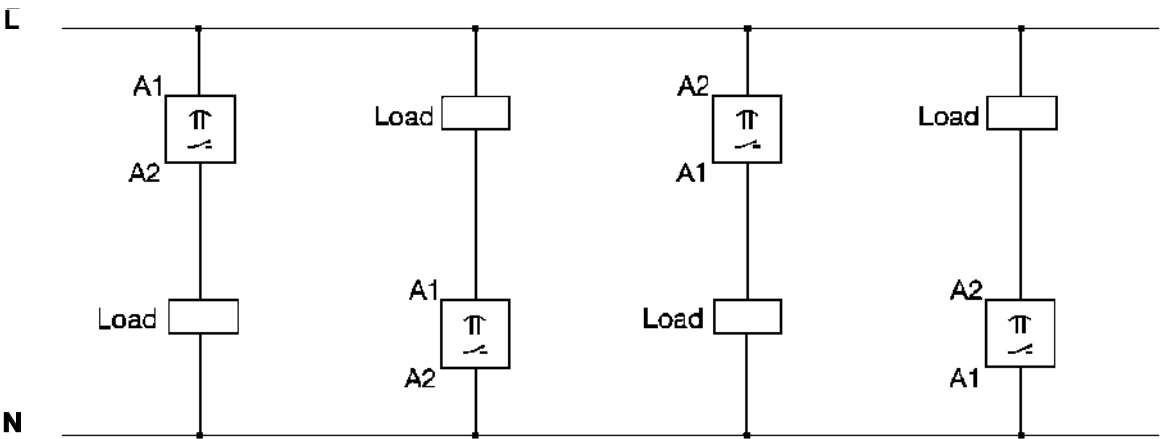
Power supply	Overvoltage cat. III (IEC 60664)
Rated operational voltage	(IEC 60038) 24-230 VAC, -10/+15%
Rated insulation voltage	None



General Specifications

Power ON delay	≤ 100 ms	Approvals	UL, CSA
Power OFF delay	≥ 200 ms	CE Marking	Yes
Environment		EMC	Electromagnetic Compatibility
Degree of protection	IP 20	Immunity	Acc. to IEC 60801-4
Pollution degree	3		Acc. to IEC 60801-5
Operating temperature	-20° to +50°C (-4° to +122°F)		
Storage temperature	-30° to +80°C (-22° to +176°F)		
Weight	50 g		
Housing			
Dimensions Screw terminals	22.5 x 56 x 49 mm		
Fast-ON connection	22.5 x 56 x 44 mm		
Material	ABS		

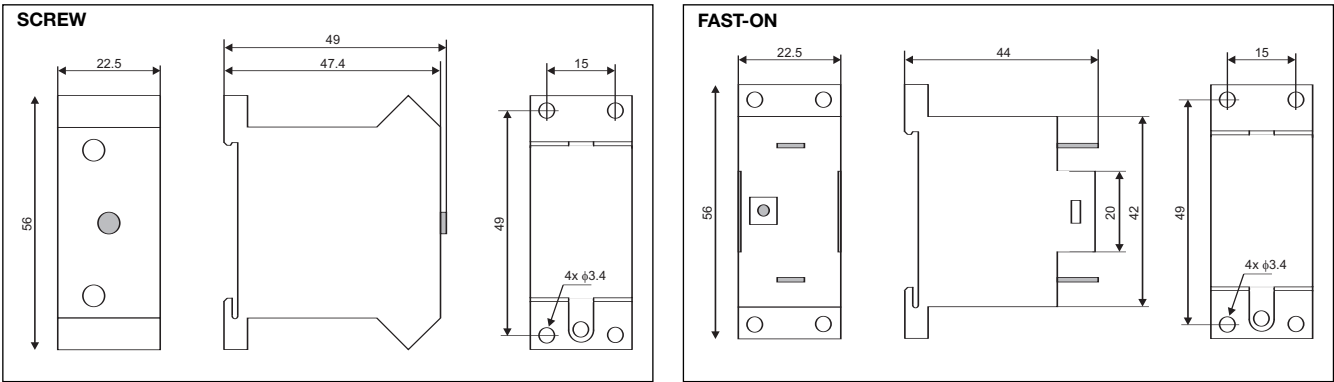
Wiring Diagram



Operation Diagram



Dimensions



Mouser Electronics

Authorized Distributor

Click to View Pricing, Inventory, Delivery & Lifecycle Information:

[Carlo Gavazzi:](#)

[EBSSM231M](#) [EC--WELL](#) [EBSSM2310S](#) [EBSSM2310MF](#) [EBSSM2310SF](#) [EBSSM231MF](#) [EBSSM2310M](#)