

Timers

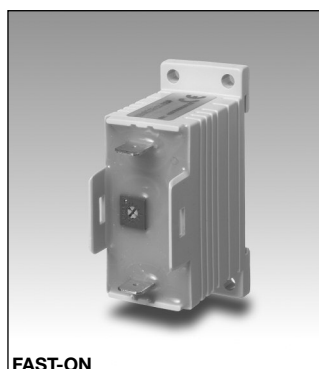
Delay on Operate

Type EAS

CARLO GAVAZZI



SCREW



FAST-ON

- Fail-safe two-wire connection
- Low-cost
- Multi-voltage: 24-230 VAC/DC
- Delay on operate
- Time range: 0.5 s - 10 m
- Knob-adjustable time setting
- Output: SCR 10-500 mA (screws) and SCR 10-700mA (Fast-ON)
- For mounting on DIN-rail in accordance with DIN/EN 50 022
- 22.5 mm small Euronorm housing

Product Description

Small, low-cost mono function timer with adjustable time setting. Only 2-wire connection for easy and fail-safe use (see diagram).

For mounting on DIN-rail or directly on surface by screws. The timer is used e.g. to delay small industrial relays or 3-phase contactors.

Ordering Key

EAS S M23 10S F

Housing	_____
Function	_____
Small E-line	_____
Output	_____
Power supply	_____
Time range	_____
Fast-ON connection	_____

Type Selection

Mounting	Output	Time range	Connection	Supply: 24 - 230 VAC/DC
For DIN-rail or for screw	SCR	0.5 - 10 s	Screws	EAS S M23 10S
	SCR	0.1 - 1 m	Screws	EAS S M23 1M
	SCR	1 - 10 m	Screws	EAS S M23 10M
For DIN-rail or for screw	SCR	0.5 - 10 s	Fast-ON	EAS S M23 10S F
	SCR	0.1 - 1 m	Fast-ON	EAS S M23 1M F
	SCR	1 - 10 m	Fast-ON	EAS S M23 10M F

Time Specifications

Time ranges	
10 s	0.5 - 10 s
1 m	0.1 - 1 m
10 m	1 - 10 m
Time range accuracy	max. setting: actual time ≥ max. set time min. setting: actual time ≤ min. set time
Repeat accuracy	≤ 0.2%
Time variation Within rated power supply and ambient temperature	≤ 0.1%/V ≤ 0.2%/°C
Reset Time and output	Power supply interruption ≥ 200 ms

Output Specifications

Output	SCR
Output current	
Maximum load current (screw terminals) (Fast-ON connection)	500 mA 700 mA
Maximum current for 100 ms (screw terminals) (Fast-ON connection)	5.5 A 7 A
Minimum load current	10 mA
Leakage current	≤ 3.5 mA @ 230 V typ.: 2 m
Voltage drop	≤ 8 VAC/DC typ.: 5 VAC/DC @ 50 mA

Supply Specifications

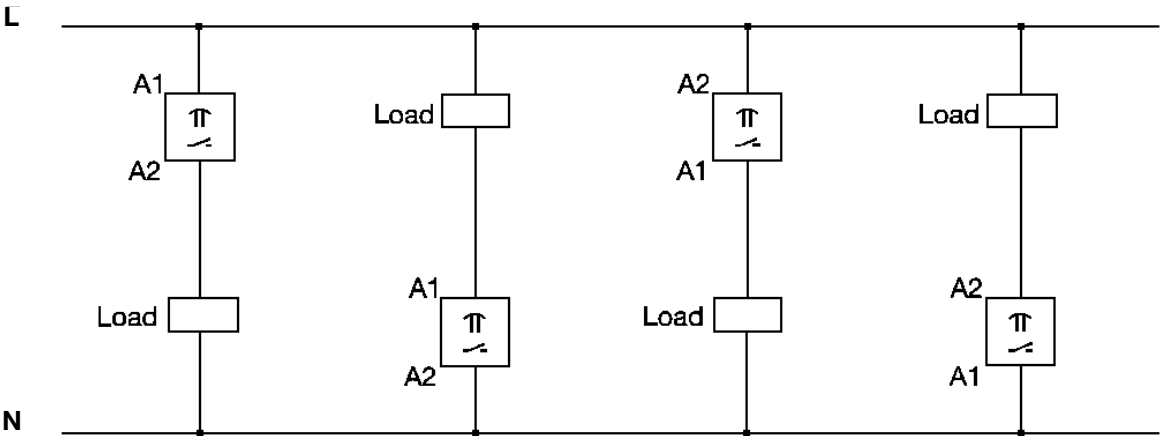
Power supply	Overvoltage cat. III (IEC 60664)
Rated operational voltage	(IEC 60038) 24-230 VAC/DC, -10/+15%
Rated insulation voltage	None



General Specifications

Power ON delay	≤ 100 ms	Max. screws tightening torque	0.5 Nm
Power OFF delay	≥ 200 ms	Dimensions (Fast-ON connection)	22.5 x 56 x 49 mm
Environment		Material	ABS
Degree of protection	IP 20	Approvals	UL, CSA
Pollution degree	3	CE Marking	Yes
Operating temperature	-20° to +50°C (-4° to +122°F)	EMC	Electromagnetic compatibility
Storage temperature	-30° to +80°C (-22° to +176°F)		Acc. to IEC 60801-4
Weight	50 g		Acc. to IEC 60801-5
Housing		Immunity	
Dimensions (screw connection)	22.5 x 56 x 49 mm		

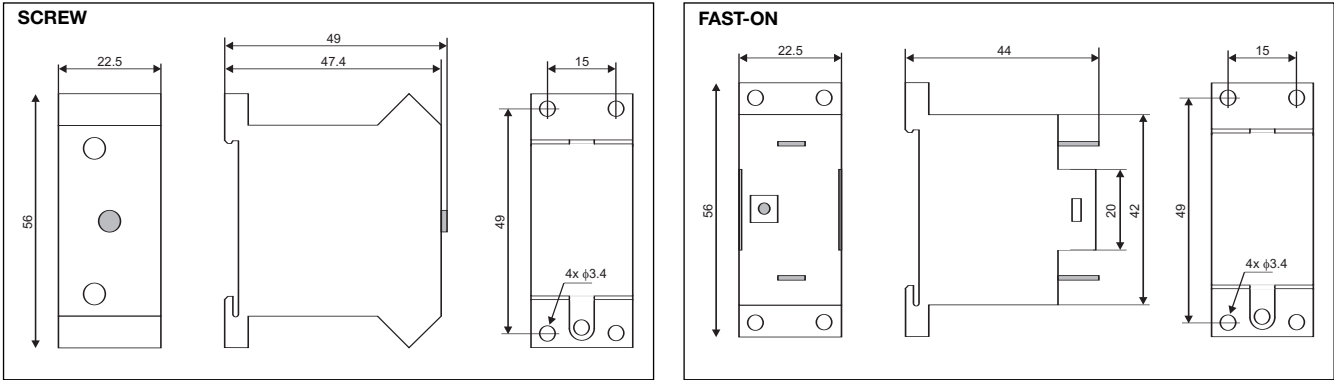
Wiring Diagram



Operation Diagram



Dimensions



Mouser Electronics

Authorized Distributor

Click to View Pricing, Inventory, Delivery & Lifecycle Information:

[Carlo Gavazzi:](#)

[EASSM231MF](#) [EASSM2310SF](#) [EASSM2310M](#) [EASSM2310S](#) [EASSM2310MF](#) [EASSM231M](#)