

Proximity Sensors Capacitive Accessories Mounting Bracket



- Designed for DR 10..
- Inner diameter: 30 mm

Product Description

Mounting bracket for capacitive proximity switches types DR 10.. .

Ordering Key

DB 1

Mounting bracket
Inner diameter

Type Selection

Inner Diameter

30 mm

Type

DB 1

Specifications

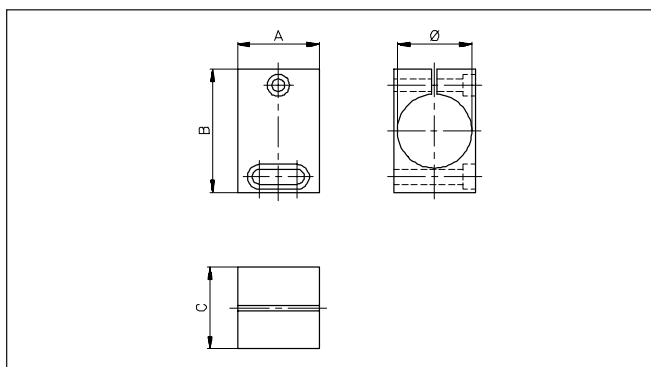
Material

Acetal

Colour

Black

Dimensions



Type	A mm	B mm	C mm	Ø mm
DB 1	33	50	33	30

Mouser Electronics

Authorized Distributor

Click to View Pricing, Inventory, Delivery & Lifecycle Information:

[Carlo Gavazzi:](#)

[DB1](#)