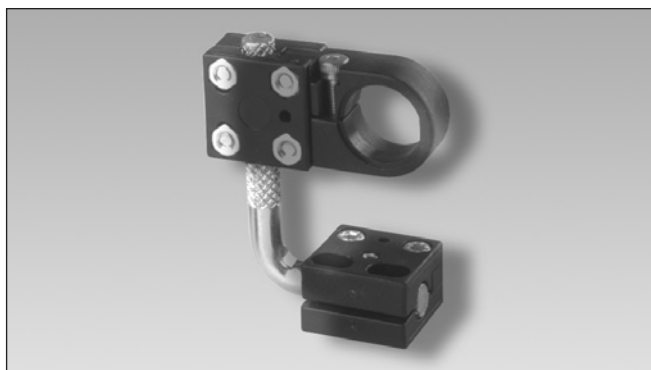


Photoelectrics Accessories Type AMB4-30, Mounting Bracket

CARLO GAVAZZI



- Secure fixing
- Simple mounting
- Mounting head and foot may be independently rotated through 360°
- Robust construction
- 5 adaptor bushes for sensors Ø4, Ø5, Ø8, Ø12 and Ø14 mm
- 2 mounting heads for Ø18 or Ø30 mm

Product Description

Universal mounting for all cylindrical sensors with Ø4 to Ø30 mm. The mounting adaptor is supplied complete with 2 mounting heads (Ø18 and Ø30 mm) and 5 adaptor bushes (Ø4, Ø5, Ø8, Ø12 and Ø14 mm).

Ordering Key

AMB 4-30

Mounting bracket
Diameter

Type Selection

For sensors with diameter Ordering no.

4 to 30 mm

AMB4-30

Delivery Contents

- Mounting bracket AMB4-30 including 5 adaptor bushes
- Two M4 x 20 mm screws
- Two M4 nuts

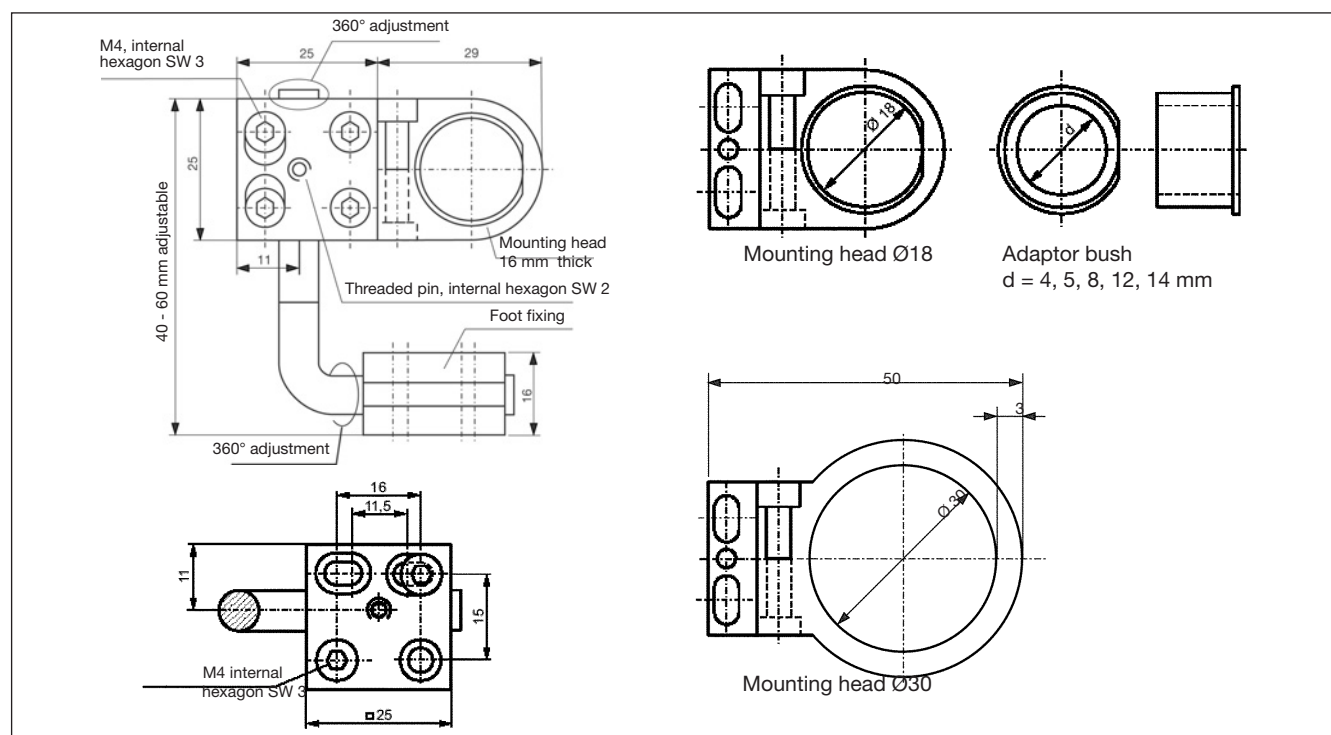
Specifications

Material

Plast parts
Fasteners
Pin
Fixing screws and nuts

Nylon 66, black
Stainless steel
Zinc plated, knurled
Zinc plated

Dimensions



Mouser Electronics

Authorized Distributor

Click to View Pricing, Inventory, Delivery & Lifecycle Information:

[Carlo Gavazzi:](#)

[AMB4-30](#)