

# Coaxial High Pass Filter

## ZX75HP-250-S+

50Ω      400 to 3000 MHz

### The Big Deal

- Low insertion loss
- High rejection
- Connectorized package



Generic photo used for illustration purposes only  
CASE STYLE: KE1467

### Product Overview

ZX75HP-250-S+ is a High pass filter in a rugged connectorized package covering 400 to 3000 MHz. This filter will find its application in TV Broadcast, point-to-point military radio and cordless telephones. It has repeatable performance across production lots and consistent performance across temperature.

### Key Features

Feature	Advantages
Low insertion loss	Can be used in high performance applications.
Good rejection	This enables the filter to attenuate spurious signals and reject harmonics for broad band frequency.
Connectorized package	The connectorized package is easy to interface with other devices and well suited for test setups.

#### Notes

- A. Performance and quality attributes and conditions not expressly stated in this specification document are intended to be excluded and do not form a part of this specification document.  
B. Electrical specifications and performance data contained in this specification document are based on Mini-Circuit's applicable established test performance criteria and measurement instructions.  
C. The parts covered by this specification document are subject to Mini-Circuits standard limited warranty and terms and conditions (collectively, "Standard Terms"); Purchasers of this part are entitled to the rights and benefits contained therein. For a full statement of the Standard Terms and the exclusive rights and remedies thereunder, please visit Mini-Circuits' website at [www.minicircuits.com/MCLStore/terms.jsp](http://www.minicircuits.com/MCLStore/terms.jsp)



# Coaxial High Pass Filter

50Ω 400 to 3000 MHz

ZX75HP-250-S+



Generic photo used for illustration purposes only

## Features

- Wide band, 400 MHz to 3000 MHz
- High rejection
- Connectorized package

CASE STYLE: KE1467

Connectors	Model
SMA-MF	ZX75HP-250-S+

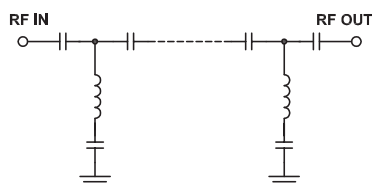
## Electrical Specifications at 25°C

Parameter	F#	Frequency (MHz)	Min.	Typ.	Max.	Unit
Stop Band	Rejection Loss	DC-F1	DC-178	20	30	- dB
	VSWR	DC-F1	DC-178	-	67	- :1
Pass Band	Insertion Loss	F2-F3	400-3000	-	0.6	1.5 dB
	VSWR	F2-F3	400-3000	-	1.5	- :1

## Applications

- TV Broadcast
- Point-to-point military radio
- Cordless telephones

## Functional Schematic



## Maximum Ratings

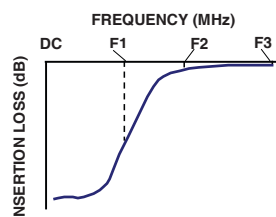
Operating Temperature	-40°C to 85°C
Storage Temperature	-55°C to 100°C
RF Power Input	0.5 W.

Permanent damage may occur if any of these limits are exceeded.

## Typical Performance Data at 25°C

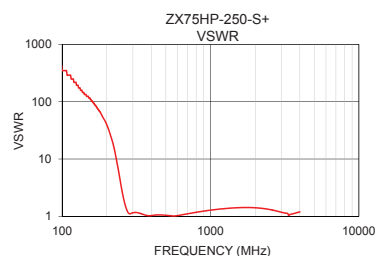
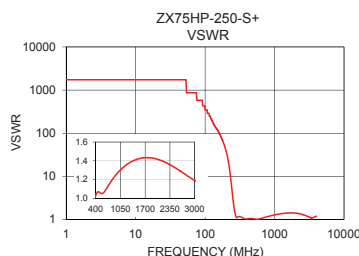
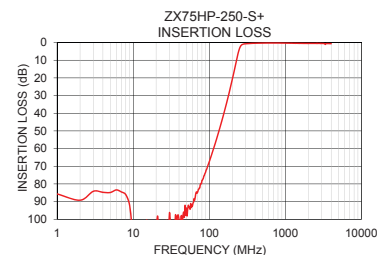
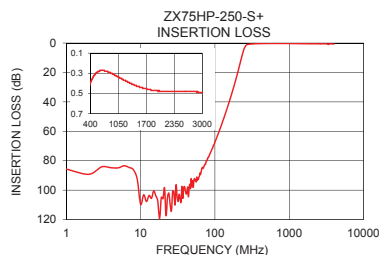
Frequency (MHz)	Insertion Loss (dB)	VSWR (:1)
1	85.68	1737.18
73	82.95	868.59
114	59.95	289.53
143	45.77	133.63
178	30.31	69.49
215	15.04	23.18
235	7.45	8.35
250	3.30	3.33
260	1.81	1.99
275	0.96	1.23
340	0.52	1.12
400	0.39	1.03
605	0.28	1.04
915	0.31	1.24
1110	0.35	1.32
1260	0.38	1.37
1525	0.43	1.42
1855	0.47	1.42
2280	0.48	1.37
3000	0.49	1.18

## Typical Frequency Response



## +RoHS Compliant

The +Suffix identifies RoHS Compliance. See our web site for RoHS Compliance methodologies and qualifications



## Notes

- A. Performance and quality attributes and conditions not expressly stated in this specification document are intended to be excluded and do not form a part of this specification document.  
B. Electrical specifications and performance data contained in this specification document are based on Mini-Circuits' applicable established test performance criteria and measurement instructions.  
C. The parts covered by this specification document are subject to Mini-Circuits standard limited warranty and terms and conditions (collectively, "Standard Terms"); Purchasers of this part are entitled to the rights and benefits contained therein. For a full statement of the Standard Terms and the exclusive rights and remedies thereunder, please visit Mini-Circuits' website at [www.minicircuits.com/MCLStore/terms.jsp](http://www.minicircuits.com/MCLStore/terms.jsp)



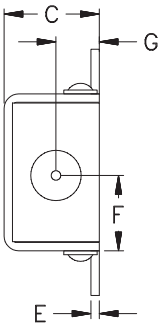
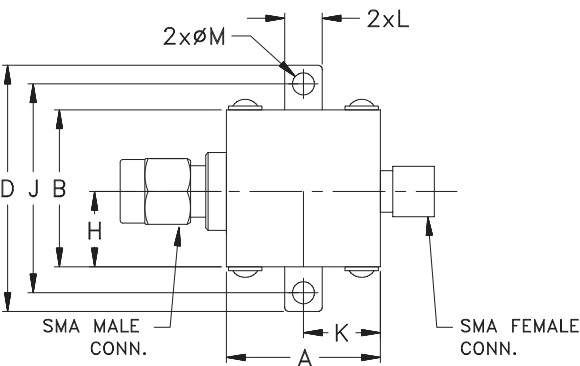
[www.minicircuits.com](http://www.minicircuits.com) P.O. Box 350166, Brooklyn, NY 11235-0003 (718) 934-4500 [sales@minicircuits.com](mailto:sales@minicircuits.com)

REV.C  
ECO-004400  
ZX75HP-250-S+  
EDU1695  
URJ  
201008  
Page 2 of 3

Coaxial Connections

INPUT	SMA-Male
OUTPUT	SMA-Female

Outline Drawing



Outline Dimensions ( inch )

A	B	C	D	E	F	G
.74	.75	.46	1.18	.04	.362	.21
18.80	19.05	11.68	29.97	1.02	9.19	5.33
H	J	K	L	M		Wt.
.362	1.00	.37	.18	.11		grams
9.19	25.40	9.40	4.57	2.79		24.4

Note: Please refer to case style drawing for details

Notes  
A. Performance and quality attributes and conditions not expressly stated in this specification document are intended to be excluded and do not form a part of this specification document.  
B. Electrical specifications and performance data contained in this specification document are based on Mini-Circuit's applicable established test performance criteria and measurement instructions.  
C. The parts covered by this specification document are subject to Mini-Circuits standard limited warranty and terms and conditions (collectively, "Standard Terms"); Purchasers of this part are entitled to the rights and benefits contained therein. For a full statement of the Standard Terms and the exclusive rights and remedies thereunder, please visit Mini-Circuits' website at [www.minicircuits.com/MCLStore/terms.jsp](http://www.minicircuits.com/MCLStore/terms.jsp)

# Mouser Electronics

Authorized Distributor

Click to View Pricing, Inventory, Delivery & Lifecycle Information:

[Mini-Circuits:](#)

[ZX75HP-250-S+](#)