

Coaxial

Bandpass Filter

ZX75BP-204-S+

50Ω 175 to 237 MHz

The Big Deal

- High rejection
- Fast roll-off
- Connectorized package



Generic photo used for illustration purposes only
CASE STYLE: KE1467

Product Overview

ZX75BP-204-S+ is a 50Ω bandpass filter in a connectorized package covering 175 to 237 MHz. This offers good matching within the passband and high rejection in stopband. This will find its applications in transmitters and receivers to suppress spurious emission and harmonics.

Key Features

Feature	Advantages
High rejection	Attenuates unwanted spurious and harmonics
Fast roll-off	Provides high selectivity
Connectorized package	Easy to interface with other devices and well suited for test setups

Notes

- A. Performance and quality attributes and conditions not expressly stated in this specification document are intended to be excluded and do not form a part of this specification document.
B. Electrical specifications and performance data contained in this specification document are based on Mini-Circuit's applicable established test performance criteria and measurement instructions.
C. The parts covered by this specification document are subject to Mini-Circuits standard limited warranty and terms and conditions (collectively, "Standard Terms"); Purchasers of this part are entitled to the rights and benefits contained therein. For a full statement of the Standard Terms and the exclusive rights and remedies thereunder, please visit Mini-Circuits' website at www.minicircuits.com/MCLStore/terms.jsp



Coaxial Bandpass Filter

50Ω 175 to 237 MHz

ZX75BP-204-S+



Generic photo used for illustration purposes only
CASE STYLE: KE1467

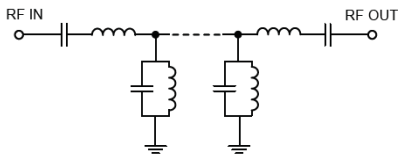
Features

- High rejection
- Fast roll-off
- Connectorized package

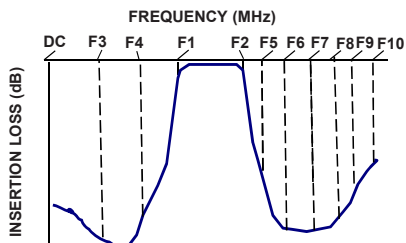
Applications

- TV Broadcasting
- Digital audio broadcasting
- Military radio

Functional Schematic



Typical Frequency Response



+RoHS Compliant

The +Suffix identifies RoHS Compliance. See our web site for RoHS Compliance methodologies and qualifications

Electrical Specifications at 25°C

Parameter	F#	Frequency (MHz)	Min.	Typ.	Max.	Unit
Pass Band	Insertion Loss	F1-F2	175-237	—	2.0	3.2 dB
	VSWR	F1-F2	175-237	—	1.4	2.1 :1
Stop Band, Lower	Insertion Loss	DC-F3	DC - 90	55	60	— dB
		F3-F4	90-135	20	—	— dB
	VSWR	DC-F4	DC - 135	—	20	— :1
Stop Band, Upper	Insertion Loss	F5-F6	300-360	25	—	— dB
		F6-F7	360-600	40	—	— dB
		F7-F8	600-1400	60	—	— dB
		F8-F9	1400-2500	40	—	— dB
		F9-F10	2500-3500	30	—	— dB
		VSWR	F5-F10	300-3500	—	20 :1

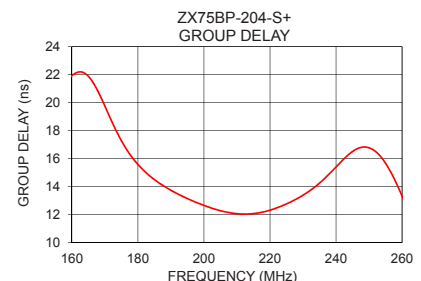
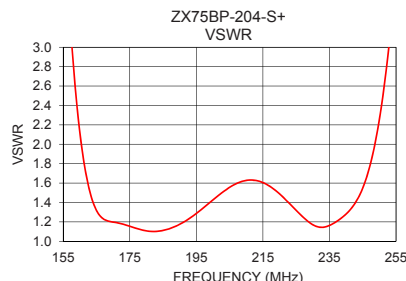
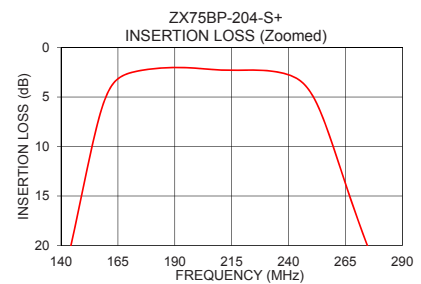
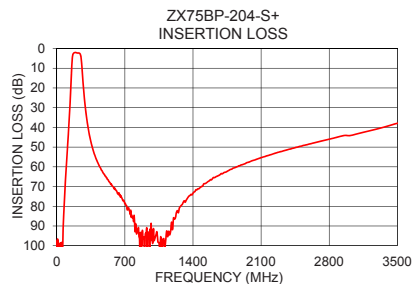
Maximum Ratings

Operating Temperature	-40°C to 85°C
Storage Temperature	-55°C to 100°C
RF Power Input	0.5 W Max. @ 25°C

Permanent damage may occur if any of these limits are exceeded.

Typical Performance Data at 25°C

Frequency (MHz)	Insertion Loss (dB)	VSWR (:1)	Frequency (MHz)	Group Delay (nsec)
1	101.23	12773.37	175	17.28
90	66.60	270.25	177	16.50
130	33.98	46.09	179	15.86
135	29.38	34.10	181	15.33
145	19.32	15.84	183	14.88
165	3.15	1.32	185	14.50
175	2.32	1.16	187	14.17
204	2.17	1.53	189	13.87
237	2.56	1.20	191	13.61
275	20.23	16.87	204	12.35
295	30.43	31.24	205	12.28
300	32.51	34.77	207	12.17
360	49.08	70.27	209	12.09
600	71.53	113.54	215	12.07
1400	73.44	64.30	217	12.14
2500	49.61	42.15	219	12.25
3100	43.13	39.12	225	12.77
3300	40.71	38.14	227	12.99
3400	39.36	37.10	235	14.25
3500	37.95	34.07	237	14.68



Notes

- A. Performance and quality attributes and conditions not expressly stated in this specification document are intended to be excluded and do not form a part of this specification document.
B. Electrical specifications and performance data contained in this specification document are based on Mini-Circuits' applicable established test performance criteria and measurement instructions.
C. The parts covered by this specification document are subject to Mini-Circuits standard limited warranty and terms and conditions (collectively, "Standard Terms"); Purchasers of this part are entitled to the rights and benefits contained therein. For a full statement of the Standard Terms and the exclusive rights and remedies thereunder, please visit Mini-Circuits' website at www.minicircuits.com/MCLStore/terms.jsp



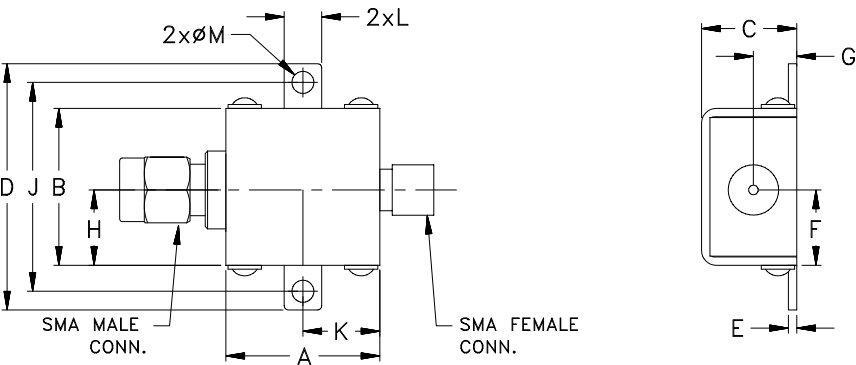
www.minicircuits.com P.O. Box 350166, Brooklyn, NY 11235-0003 (718) 934-4500 sales@minicircuits.com

REV. OR
M173586
ZX75BP-204-S+
EDU3532
URJ
190527
Page 2 of 3

Pad Connections

PORT - 1	SMA-MALE
PORT - 2	SMA-FEMALE

Outline Drawing



Outline Dimensions (inch mm)

A	B	C	D	E	F	G
.74	.75	.46	1.18	.04	.362	.21
18.80	19.05	11.68	29.97	1.02	9.19	5.33
H	J	K	L	M		Wt.
.362	1.00	.37	.18	.11		grams
9.19	25.40	9.40	4.57	2.79		24.4

Note: Please refer case style drawing for details.

Notes
A. Performance and quality attributes and conditions not expressly stated in this specification document are intended to be excluded and do not form a part of this specification document.
B. Electrical specifications and performance data contained in this specification document are based on Mini-Circuit's applicable established test performance criteria and measurement instructions.
C. The parts covered by this specification document are subject to Mini-Circuits standard limited warranty and terms and conditions (collectively, "Standard Terms"); Purchasers of this part are entitled to the rights and benefits contained therein. For a full statement of the Standard Terms and the exclusive rights and remedies thereunder, please visit Mini-Circuits' website at www.minicircuits.com/MCLStore/terms.jsp

Mouser Electronics

Authorized Distributor

Click to View Pricing, Inventory, Delivery & Lifecycle Information:

[Mini-Circuits:](#)

[ZX75BP-204-S+](#)