

# Cavity Bandpass Filters

50Ω DC to 15 GHz



## The Big Deal

- Very low insertion loss with excellent power handling
- Very fast roll-off with wide stopband
- Passbands up to 15 GHz
- Stopbands up to 20 GHz

## Product Overview

Mini-Circuits' cavity filters are designed by implementing resonant structures with very high Q and are ideal for narrow-band, high-selectivity applications. These designs can provide bandwidths as narrow as 1% with very high selectivity and excellent low noise floor. Low insertion loss combined with excellent power handling makes them well-suited for transmitter and receiver front end. Advanced filter design and construction enables stopband width greater than 3x the center frequency.

Mini-Circuits' cavity filters feature a special protective assembly to prevent accidental de-tuning that would otherwise require expensive replacement or return to factory for re-tuning. Custom integrated assembly with LNA and bias tees results in greatly simplifying system integration. Precise machining allows realization of cavity filters with small form factors for applications where size is critical. Excellent repeatability across units is achieved through precise tuning and process control.

## Key Features

Feature	Advantages
Low insertion loss	Low signal loss results in better SNR in receiver front end and better power delivery to antenna in transmitter
Fast roll-off	Higher selectivity results in better adjacent channel rejection and dynamic range
Wide stopband	Wide spur free band results in better receiver sensitivity
High power handling	Well suited for transmitter application
Protective assembly	Prevents accidental de-tuning of precisely tuned resonant circuit

### Notes

- A. Performance and quality attributes and conditions not expressly stated in this specification document are intended to be excluded and do not form a part of this specification document.  
B. Electrical specifications and performance data contained in this specification document are based on Mini-Circuits' applicable established test performance criteria and measurement instructions.  
C. The parts covered by this specification document are subject to Mini-Circuits' standard limited warranty and terms and conditions (collectively, "Standard Terms"); Purchasers of this part are entitled to the rights and benefits contained therein. For a full statement of the Standard Terms and the exclusive rights and remedies thereunder, please visit Mini-Circuits' website at [www.minicircuits.com/MCLStore/terms.jsp](http://www.minicircuits.com/MCLStore/terms.jsp)



# Bandpass Cavity Filter

50Ω 902 to 915 MHz

## ZVBP-909-S+



### Features

- Low Insertion loss, 2.0 dB typ.
- Good VSWR, 1.2:1 typ. in passband
- Narrow bandwidth with high selectivity

Generic photo used for illustration purposes only

CASE STYLE: KT1510

Connectors SMA-F Model ZVBP-909-S+

### Electrical Specifications at 25°C

Parameter	F#	Frequency (MHz)	Min.	Typ.	Max.	Unit
Pass Band	Center Frequency	—	—	908.5	—	MHz
	Insertion Loss	F1-F2	—	2.0	2.7	dB
	VSWR	F1-F2	—	1.2	1.4	:1
Stop Band, Lower	Insertion Loss	DC-F3	20	33	—	dB
	VSWR	DC-F3	—	30	—	:1
Stop Band, Upper	Insertion Loss	F4-F5	20	34	—	dB
	VSWR	F4-F5	—	25	—	:1

### Maximum Ratings

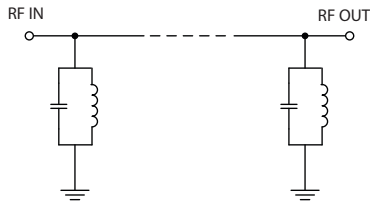
Operating Temperature	-55°C to 100°C
Storage Temperature	-55°C to 100°C
RF Power Input*	15W max. at 25°C

\*Derate linearly to 5 W at 100°C  
Permanent damage may occur if any of these limits are exceeded.

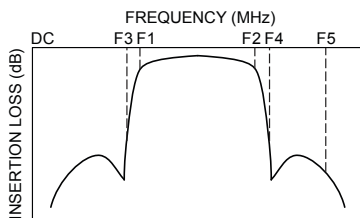
### Applications

- CDMA band rejection for GSM base station
- Receivers/Transmitters

### Functional Schematic



### Typical Frequency Response

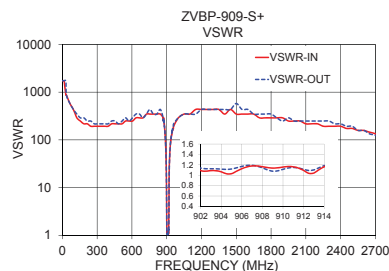
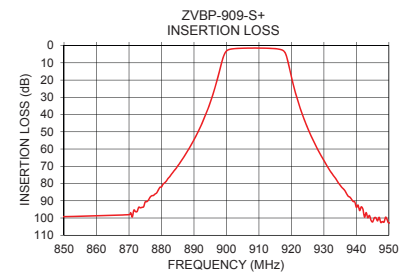
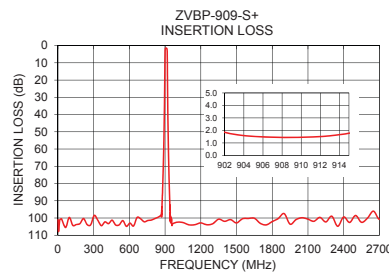


### Typical Performance Data at 25°C

Frequency (MHz)	Insertion Loss (dB)	VSWR-In (:1)	VSWR-Out (:1)
10.00	104.69	1737.18	1737.18
870.00	98.08	289.53	289.53
888.00	61.26	108.58	108.58
895.00	33.04	34.07	37.77
897.50	17.32	14.50	17.05
899.00	6.81	5.25	6.21
900.00	3.15	2.09	2.37
902.00	1.85	1.14	1.09
908.50	1.44	1.10	1.15
915.00	1.77	1.17	1.18
918.00	3.98	1.65	1.24
919.00	9.87	3.58	2.55
920.00	18.20	10.56	7.94
925.00	47.86	43.44	41.37
929.00	63.41	64.35	64.35
950.00	102.83	157.93	157.93
1300.00	103.35	434.30	434.30
2300.00	98.96	193.02	248.17

### +RoHS Compliant

The +Suffix identifies RoHS Compliance. See our web site for RoHS Compliance methodologies and qualifications



### Notes

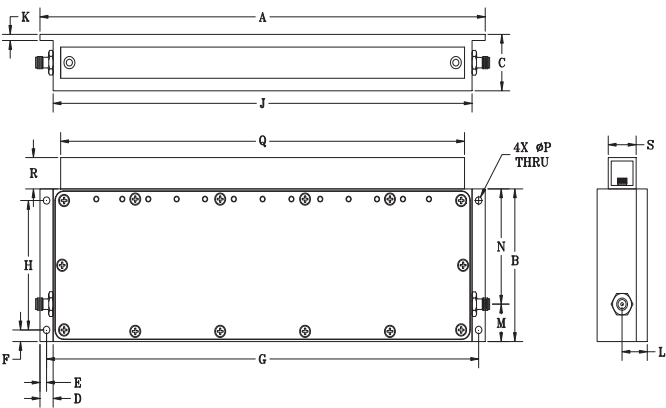
- Performance and quality attributes and conditions not expressly stated in this specification document are intended to be excluded and do not form a part of this specification document.
- Electrical specifications and performance data contained in this specification document are based on Mini-Circuit's applicable established test performance criteria and measurement instructions.
- The parts covered by this specification document are subject to Mini-Circuits standard limited warranty and terms and conditions (collectively, "Standard Terms"); Purchasers of this part are entitled to the rights and benefits contained therein. For a full statement of the Standard Terms and the exclusive rights and remedies thereunder, please visit Mini-Circuits' website at [www.minicircuits.com/MCLStore/terms.jsp](http://www.minicircuits.com/MCLStore/terms.jsp)



Coaxial Connections

PORT - 1	SMA FEMALE
PORT - 2	SMA FEMALE

Outline Drawing



Outline Dimensions ( inch mm )

A	B	C	D	E	F	G	H	J
10.193	3.110	1.150	0.300	0.150	0.236	9.893	2.637	9.593
258.90	78.99	29.21	7.62	3.81	5.99	251.28	66.98	243.66
K	L	M	N	P	Q	R	S	wt
0.127	0.577	0.761	2.349	0.150	9.250	0.638	0.638	grams
3.23	14.66	19.33	59.66	3.81	234.95	16.21	16.21	845.00

Note: Please refer to case style drawing for details

Notes  
A. Performance and quality attributes and conditions not expressly stated in this specification document are intended to be excluded and do not form a part of this specification document.  
B. Electrical specifications and performance data contained in this specification document are based on Mini-Circuit's applicable established test performance criteria and measurement instructions.  
C. The parts covered by this specification document are subject to Mini-Circuits standard limited warranty and terms and conditions (collectively, "Standard Terms"); Purchasers of this part are entitled to the rights and benefits contained therein. For a full statement of the Standard Terms and the exclusive rights and remedies thereunder, please visit Mini-Circuits' website at [www.minicircuits.com/MCLStore/terms.jsp](http://www.minicircuits.com/MCLStore/terms.jsp)

# Mouser Electronics

Authorized Distributor

Click to View Pricing, Inventory, Delivery & Lifecycle Information:

[Mini-Circuits:](#)

[ZVBP-909-S+](#)