

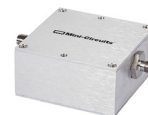
# Coaxial Low Pass Filter

## ZLPF-120+

50Ω DC to 120 MHz

### The Big Deal

- High rejection
- Fast roll-off
- Good VSWR
- Connectorized package



Generic photo used for illustration purposes only  
CASE STYLE: CC1935

### Product Overview

ZLPF-120+ is a 50Ω low pass filter built in connectorized package. Covering DC-120 MHz bandwidth, these units offer good matching within the passband and high rejection in stopband. This will find its applications in military communication and mobile satellites. It has repeatable performance across production lots and consistent performance across temperature.

### Key Features

Feature	Advantages
Low passband insertion loss	Suitable for high performance application
Fast roll-off	Provides very good adjacent band rejection
Connectorized package	The connectorized package is easy to interface with other devices and well suited for test setups
Good VSWR	Provides good interface when used with other devices.

#### Notes

- A. Performance and quality attributes and conditions not expressly stated in this specification document are intended to be excluded and do not form a part of this specification document.  
B. Electrical specifications and performance data contained in this specification document are based on Mini-Circuit's applicable established test performance criteria and measurement instructions.  
C. The parts covered by this specification document are subject to Mini-Circuits standard limited warranty and terms and conditions (collectively, "Standard Terms"); Purchasers of this part are entitled to the rights and benefits contained therein. For a full statement of the Standard Terms and the exclusive rights and remedies thereunder, please visit Mini-Circuits' website at [www.minicircuits.com/MCLStore/terms.jsp](http://www.minicircuits.com/MCLStore/terms.jsp)



# Low Pass Filter

50Ω

DC to 120 MHz

ZLPF-120+



Generic photo used for illustration purposes only

CASE STYLE: CC1935

Connectors Model

SMA-F ZLPF-120+

## Features

- High rejection
- Fast roll-off
- Good VSWR
- Connectorized package

## Applications

- Military Communication
- Mobile satellite
- Auxiliary broadcasting

## Electrical Specifications at 25°C

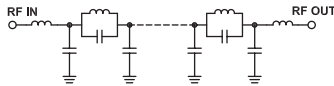
Parameter	F#	Frequency (MHz)	Min.	Typ.	Max.	Unit
Pass Band	Insertion Loss	DC-F1	DC-120	—	2.5	4.0 dB
	Freq. Cut-Off	F2	121	—	3.0	dB
	VSWR	DC-F1	DC-120	—	1.3	1.9 :1
Stop Band	Insertion Loss	F3-F4	125-2000	20	30.3	— dB
	VSWR	F3-F4	125-2000	—	20	— :1

## Maximum Ratings

Operating Temperature	-40°C to 85°C
Storage Temperature	-55°C to 100°C
RF Power Input	2.0W max.

Permanent damage may occur if any of these limits are exceeded.

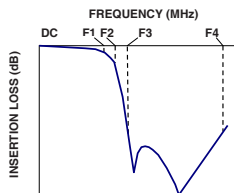
## Functional Schematic



## Typical Performance Data at 25°C

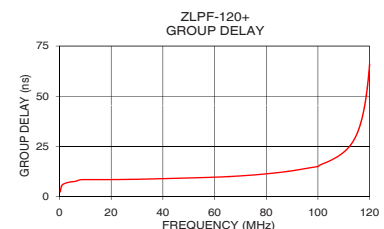
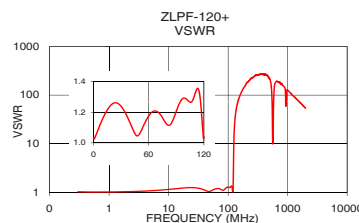
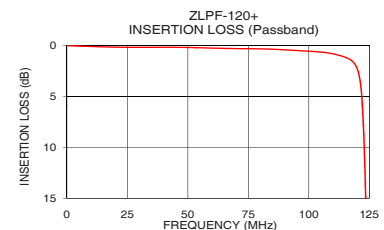
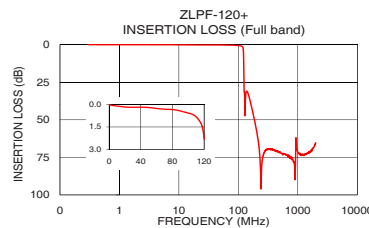
Frequency (MHz)	Insertion Loss (dB)	VSWR (:1)	Frequency (MHz)	Group Delay (nsec)
0.3	0.00	1.03	0.3	2.35
10.0	0.11	1.16	1.0	5.71
50.0	0.20	1.06	2.0	6.50
100.0	0.57	1.29	5.0	7.40
120.0	2.30	1.04	10.0	8.45
121.0	3.21	1.22	15.0	8.44
123.8	17.91	6.63	20.0	8.46
124.0	20.01	7.43	25.0	8.52
125.0	30.15	11.60	30.0	8.62
150.0	34.12	81.25	35.0	8.76
250.0	78.16	225.77	40.0	8.92
400.0	70.09	266.54	45.0	9.09
550.0	72.68	56.81	50.0	9.26
750.0	74.67	177.50	75.0	10.76
900.0	89.91	139.76	90.0	12.83
950.0	66.32	118.54	100.0	14.96
1000.0	71.51	123.80	105.0	18.05
1050.0	72.50	120.33	110.0	22.14
1500.0	72.03	76.72	115.0	30.94
2000.0	65.26	53.68	120.0	66.01

## Typical Frequency Response



## +RoHS Compliant

The +Suffix identifies RoHS Compliance. See our web site for RoHS Compliance methodologies and qualifications



## Notes

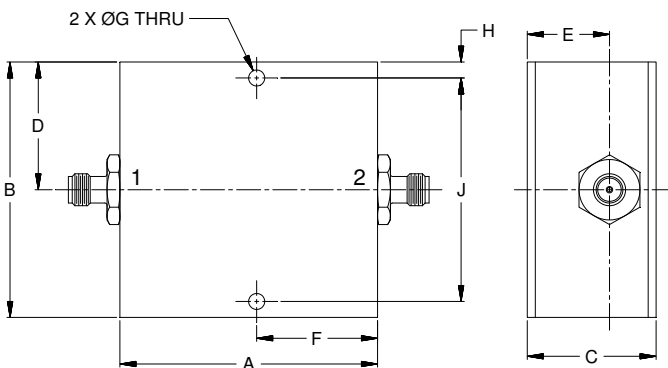
- A. Performance and quality attributes and conditions not expressly stated in this specification document are intended to be excluded and do not form a part of this specification document.  
 B. Electrical specifications and performance data contained in this specification document are based on Mini-Circuits' applicable established test performance criteria and measurement instructions.  
 C. The parts covered by this specification document are subject to Mini-Circuits standard limited warranty and terms and conditions (collectively, "Standard Terms"); Purchasers of this part are entitled to the rights and benefits contained therein. For a full statement of the Standard Terms and the exclusive rights and remedies thereunder, please visit Mini-Circuits' website at [www.minicircuits.com/MCLStore/terms.jsp](http://www.minicircuits.com/MCLStore/terms.jsp)



Coaxial Connections

INPUT	SMA-Female
OUTPUT	SMA-Female

Outline Drawing



Outline Dimensions ( inch mm )

A	B	C	D	E
2.00	2.00	1.00	1.00	.638
50.80	50.80	25.40	25.40	16.21
F	G	H	J	Wt.
.938	.125	.125	1.750	grams
23.83	3.18	3.18	44.45	103

*Note: Please refer to case style drawing for details*

**Notes**  
A. Performance and quality attributes and conditions not expressly stated in this specification document are intended to be excluded and do not form a part of this specification document.  
B. Electrical specifications and performance data contained in this specification document are based on Mini-Circuit's applicable established test performance criteria and measurement instructions.  
C. The parts covered by this specification document are subject to Mini-Circuits standard limited warranty and terms and conditions (collectively, "Standard Terms"); Purchasers of this part are entitled to the rights and benefits contained therein. For a full statement of the Standard Terms and the exclusive rights and remedies thereunder, please visit Mini-Circuits' website at [www.minicircuits.com/MCLStore/terms.jsp](http://www.minicircuits.com/MCLStore/terms.jsp)

# Mouser Electronics

Authorized Distributor

Click to View Pricing, Inventory, Delivery & Lifecycle Information:

[Mini-Circuits:](#)

[ZLPF-120+](#)