

# Coaxial Low Pass Filter

## ZLFW-K113+

50Ω

DC to 11 GHz



Generic photo used for illustration purposes only

CASE STYLE: UK3042

## The Big Deal

- Good power handling, 2.5W
- Temperature stable
- Broadband connectorized package
- Good rejection, 35 dB typical

## Product Overview

ZLFW-K113+ is a 50Ω low pass filter built in broadband connectorized package. Covering DC-11 GHz bandwidth, these units offer good matching within the passband and good rejection in stopband. ZLFW-K113+ offer low insertion loss, and good power handling capability. It handles up to 2.5W RF input power and provides a wide operating temperature range from -55°C to 125°C.

## Key Features

Feature	Advantages
Low passband insertion loss	Suitable for high performance application.
2.5W Power handling	Supports a range of system power requirements.
Connectorized package	The connectorized package is easy to interface with other devices and well suited for test setups.

### Notes

- A. Performance and quality attributes and conditions not expressly stated in this specification document are intended to be excluded and do not form a part of this specification document.  
B. Electrical specifications and performance data contained in this specification document are based on Mini-Circuit's applicable established test performance criteria and measurement instructions.  
C. The parts covered by this specification document are subject to Mini-Circuits standard limited warranty and terms and conditions (collectively, "Standard Terms"); Purchasers of this part are entitled to the rights and benefits contained therein. For a full statement of the Standard Terms and the exclusive rights and remedies thereunder, please visit Mini-Circuits' website at [www.minicircuits.com/MCLStore/terms.jsp](http://www.minicircuits.com/MCLStore/terms.jsp)



# Low Pass Filter

50Ω DC to 11 GHz

## ZLFW-K113+



### Features

- Good rejection 35dB typ.
- Temperature stable

Generic photo used for illustration purposes only

CASE STYLE: UK3042  
Connectors Model  
2.92mm-F ZLFW-K113+

**+RoHS Compliant**

The +Suffix identifies RoHS Compliance. See our web site for RoHS Compliance methodologies and qualifications

### Applications

- X-Band radar
- Public safety communications

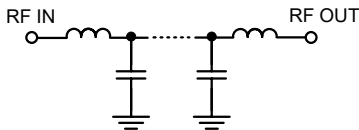
### Electrical Specifications at 25°C

Parameter	F#	Frequency (MHz)	Min.	Typ.	Max.	Unit
Pass Band	Insertion Loss	DC-F1	DC - 11000	—	2.1	3.1 dB
	Freq. Cut-Off	F2*	11900	—	3.0	— dB
	Return Loss	DC-F1	DC - 11000	—	12	— dB
Stop Band	Rejection Loss	F3-F4	14800 - 16000	19	35	— dB
		F4-F5	16000 - 19000	23	34	— dB
		F5-F6	19000 - 23500	22	31	— dB
		F6-F7	23500 - 26500	—	20	— dB

In Applications where DC voltage is present at either input or output ports, DC blocks are required.

\* Typically, a ±5% frequency deviation from the stated value may occur on a unit-to-unit basis.

### Functional Schematic



### Maximum Ratings

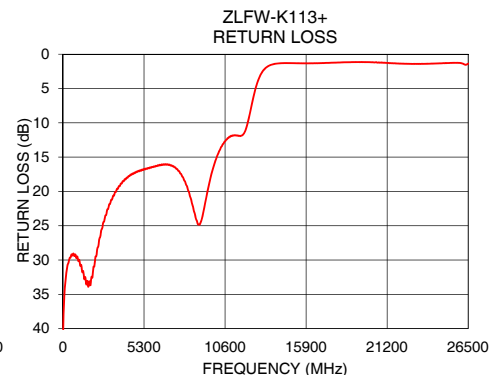
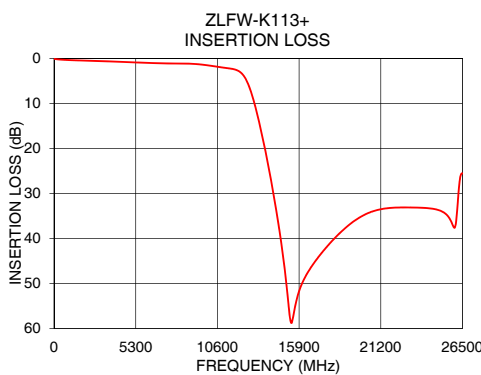
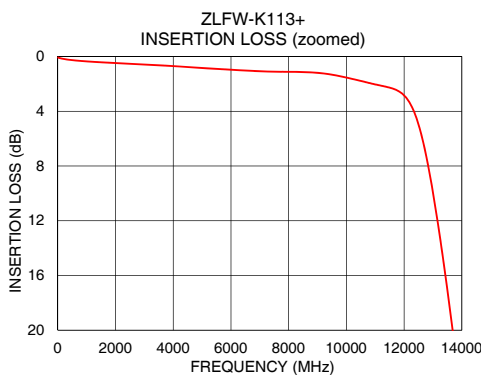
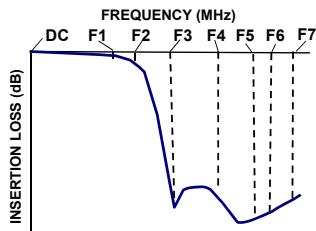
Operating Temperature	-55°C to 125°C
Storage Temperature	-55°C to 125°C
RF Power Input*	2.5W max. @25°C

\*Passband rating, derate linearly to 0.7W at 125°C ambient  
Permanent damage may occur if any of these limits are exceeded.

### Typical Performance Data at 25°C

Frequency (MHz)	Insertion Loss (dB)	Return Loss (dB)
10	0.07	40.49
100	0.13	34.78
500	0.26	29.59
1000	0.35	30.11
2000	0.48	30.98
3000	0.58	22.09
6000	0.96	16.40
10000	1.54	15.35
11000	2.04	11.89
11900	2.66	11.27
12100	3.08	9.83
13600	18.66	1.56
14100	27.42	1.33
14800	42.35	1.30
16000	50.72	1.33
19000	37.35	1.15
20000	34.98	1.16
21000	33.63	1.26
23500	33.11	1.41
26500	25.52	1.38

### Typical Frequency Response



### Notes

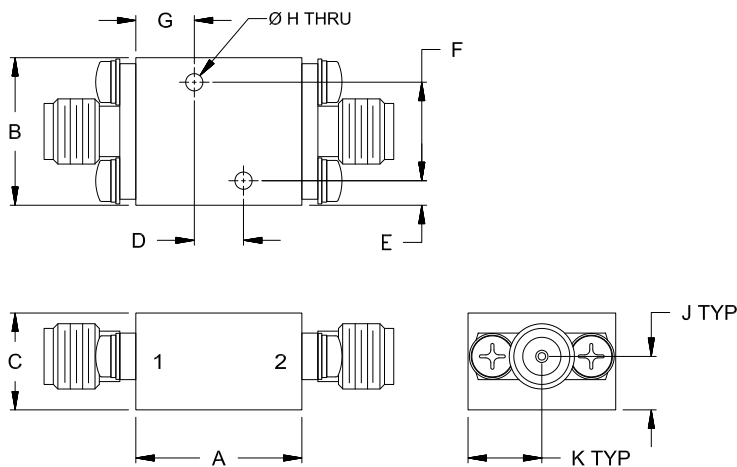
- A. Performance and quality attributes and conditions not expressly stated in this specification document are intended to be excluded and do not form a part of this specification document.  
B. Electrical specifications and performance data contained in this specification document are based on Mini-Circuit's applicable established test performance criteria and measurement instructions.  
C. The parts covered by this specification document are subject to Mini-Circuits standard limited warranty and terms and conditions (collectively, "Standard Terms"); Purchasers of this part are entitled to the rights and benefits contained therein. For a full statement of the Standard Terms and the exclusive rights and remedies thereunder, please visit Mini-Circuits' website at [www.minicircuits.com/MCLStore/terms.jsp](http://www.minicircuits.com/MCLStore/terms.jsp)



Coaxial Connections

PORT - 1	2.92mm-Female
PORT - 2	2.92mm-Female

Outline Drawing



Outline Dimensions ( inch mm )

A	B	C	D	E	F
.68	.60	.39	.200	.10	.400
17.1	15.2	10.0	5.08	2.5	10.16
G	H	J	K		Wt.
.24	.070	.22	.30		grams
6.0	1.78	5.5	7.6		24

Note: Please refer to case style drawing for details

Notes

A. Performance and quality attributes and conditions not expressly stated in this specification document are intended to be excluded and do not form a part of this specification document.

B. Electrical specifications and performance data contained in this specification document are based on Mini-Circuit's applicable established test performance criteria and measurement instructions.

C. The parts covered by this specification document are subject to Mini-Circuits standard limited warranty and terms and conditions (collectively, "Standard Terms"); Purchasers of this part are entitled to the rights and benefits contained therein. For a full statement of the Standard Terms and the exclusive rights and remedies thereunder, please visit Mini-Circuits' website at [www.minicircuits.com/MCLStore/terms.jsp](http://www.minicircuits.com/MCLStore/terms.jsp)

# Mouser Electronics

Authorized Distributor

Click to View Pricing, Inventory, Delivery & Lifecycle Information:

[Mini-Circuits:](#)

[ZLFW-K113+](#)