



## Medium Power Amplifier

WVA-60903G+  
WVA-60903GX+60 to 90 GHz  $P_{SAT}$  +21 dBm WR12 UG-387/U

## KEY FEATURES

- Full WR12 Band Coverage
- High Gain, 29.5 dB Typ.
- Excellent Gain Flatness,  $\pm 1.5$  dB Typ.
- High Saturated Output Power, +21 dBm Typ.
- Wide DC Operating Voltage, +10 To +15 V
- Over Voltage And Reverse Voltage Protected

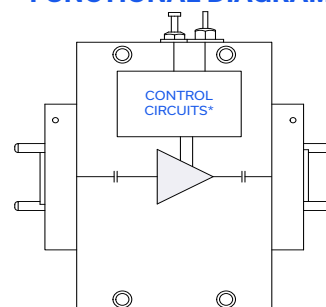


Generic photo used for illustration purposes only

## APPLICATIONS

- Automotive Radar Testing
- Aerospace & Defense
- Test and Measurement
- E-Band Backhaul
- Imaging
- 5G-FR2 Millimeter Wave Testing

## FUNCTIONAL DIAGRAM



\*Voltage Regulation, over-voltage, reverse voltage, and in-rush current protection circuit

## PRODUCT OVERVIEW

Mini-Circuits' WVA-60903G+ is a wideband medium power waveguide amplifier, covering the full WR12 60 to 90 GHz band in a single device. The model operates over a positive supply range of +10 to +15 V, allowing users to choose their desired operating voltage. Internal DC-DC conversion circuitry maintains consistent efficiency over the full input voltage range. The amplifier incorporates several DC-protection features such as over-voltage, reverse voltage, and in-rush current protection to protect from damage in case of unexpected spikes in voltage during operation. The high frequency operation combined with flat gain and medium output power makes this amplifier an ideal choice for automotive, radar/sensing applications, and wireless backhaul testing in millimeter wavebands.

## ELECTRICAL SPECIFICATIONS AT +25 °C BASEPLATE

Parameter	Frequency (GHz)	Min.	Typ.	Max.	Units
Frequency Range	-	60	-	90	GHz
Gain	60 - 90	26	29.5	-	dB
Gain Flatness	60 - 90	-	$\pm 1.5$	-	dB
Output Power at 1dB Compression ( $P_{1dB}$ )	60 - 90	+15.0	+17.5	-	dBm
Saturated Output Power ( $P_{SAT}$ ) <sup>2</sup>	60 - 90	+19.0	+21.0	-	dBm
Noise Figure	60 - 90		5		dB
Input Return Loss	60 - 90	-	15	-	dB
Output Return Loss	60 - 90	-	15	-	dB
DC Supply Voltage ( $V_S$ )	-	+10	-	+15	V
DC Current at $V_S = +10V$	-	-	380	675 <sup>3</sup>	mA

1. Open and short-circuit loads are not recommended at the amplifier output. Ensure proper WR12 load before turning the amplifier on.

2. At  $P_{SAT}$ ,  $P_{OUT}$  changes less than 0.1 dB for a 1 dB change in  $P_{IN}$ .

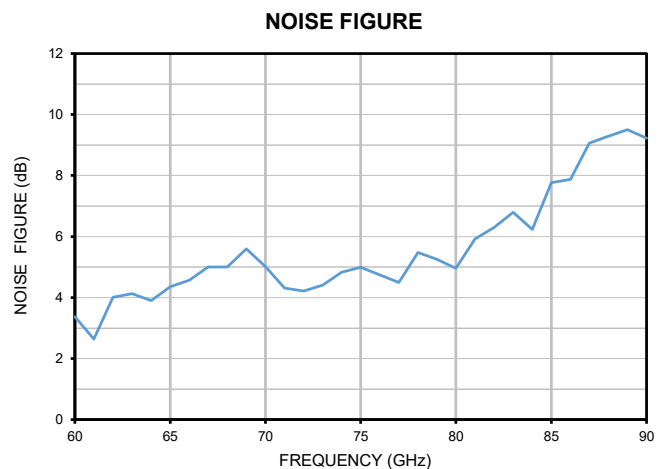
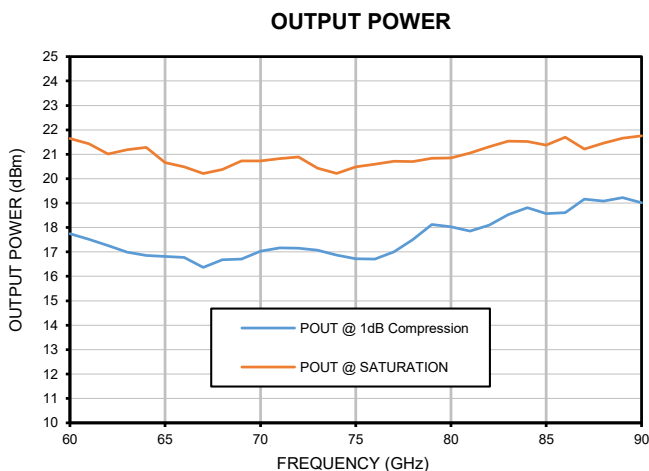
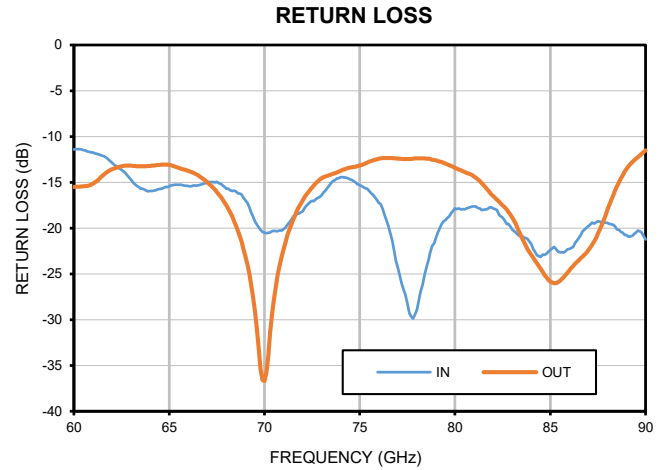
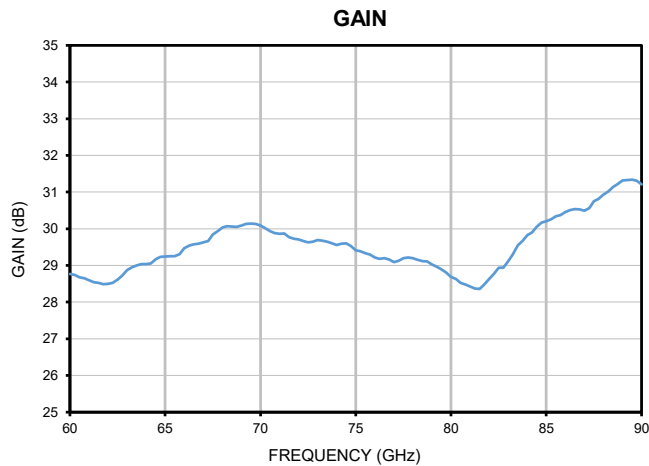
3. Typical current measured under small signal condition. Max DC Current at  $P_{SAT}$ . DC current increases as amplifier is driven into compression.



# Medium Power Amplifier

**WVA-60903G+**  
**WVA-60903GX+**

## TYPICAL PERFORMANCE GRAPHS





## Medium Power Amplifier

WVA-60903G+  
WVA-60903GX+60 to 90 GHz  $P_{SAT}$  +21 dBm WR12 UG-387/UABSOLUTE MAXIMUM RATINGS<sup>4</sup>

Parameter	Ratings
Operating Temperature	WVA-60903G+ -40 °C to +50 °C Ambient
	WVA-60903GX+ -40 °C to +60 °C Baseplate
Storage Temperature	-40 °C to +85 °C
Total Power Dissipation	6.75 W
RF Input Power <sup>5</sup> (CW)	+15 dBm
DC Operating Voltage (Vs)	+16 V

4. Continuous operation is not recommended at these extremes. Permanent damage may occur if any of these limits are exceeded.

5. Specified under matched WR12 load.

## DETERMINING MAXIMUM THERMAL RESISTANCE OF USERS' EXTERNAL HEAT SINK

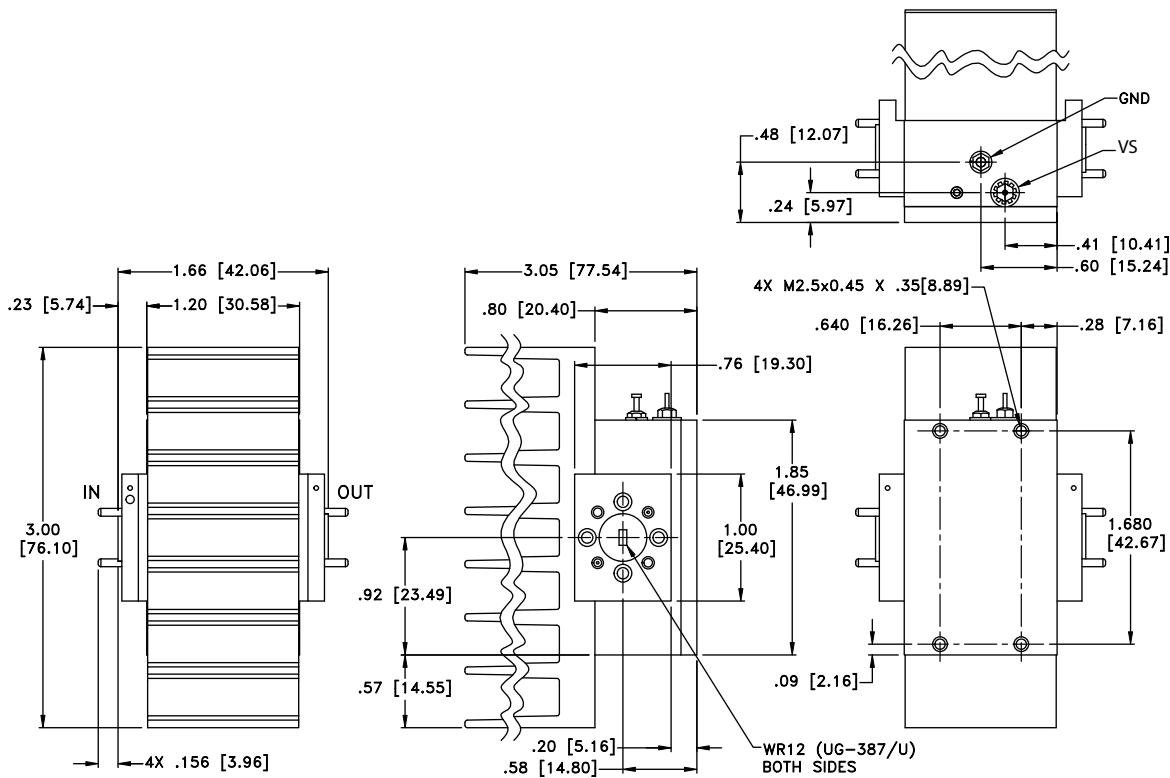
$\text{MAXIMUM THERMAL RESISTANCE} = \frac{\text{MAXIMUM OPERATING CASE TEMP} - \text{MAXIMUM USER AMBIENT TEMP}}{\text{POWER DISSIPATION}}$
<b>Example:</b> MAXIMUM OPERATING CASE TEMP = +50 °C (CHECK MAXIMUM RATINGS TABLE FOR THIS VALUE) MAXIMUM USER AMBIENT TEMP = +30 °C (USER DEFINED) POWER DISSIPATION = 10 WATTS (CHECK MAXIMUM RATINGS TABLE FOR THIS VALUE) THEN MAXIMUM ALLOWABLE THERMAL RESISTANCE = 2 °C/W

# Medium Power Amplifier

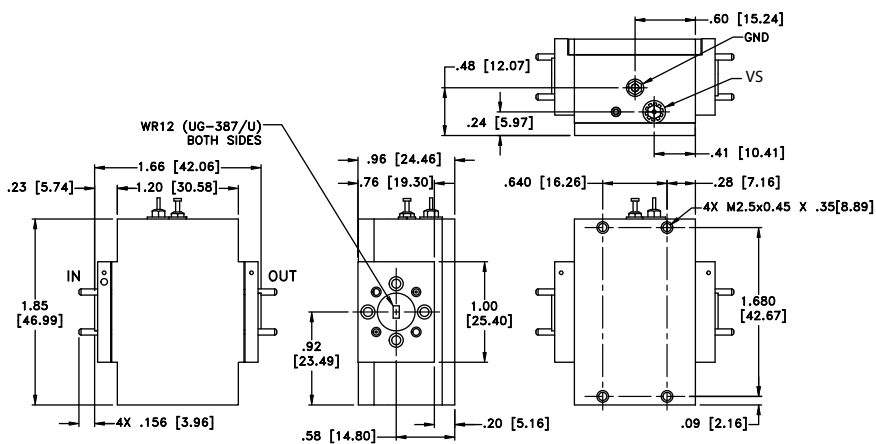
**WVA-60903G+**  
**WVA-60903GX+**

60 to 90 GHz    $P_{SAT} +21$  dBm   WR12   UG-387/U

## CASE STYLE DRAWING WITH HEATSINK (WVA-60903G+)



### CASE STYLE DRAWING WITHOUT HEATSINK (WVA-60903GX+)



Weight 200 grams; Without Heatsink 100 grams

Dimensions are in inches [mm]. Tolerances: 2 PL±.03; 3 PL ±.015 INCHES



## Medium Power Amplifier

WVA-60903G+  
WVA-60903GX+60 to 90 GHz  $P_{SAT}$  +21 dBm WR12 UG-387/U

## ADDITIONAL INFORMATION IS AVAILABLE ON OUR DASHBOARD.

Performance Data	Data Table
	Swept Graphs
	S-Parameter (S2P Files) Data Set (.zip file)
RoHs Status	Compliant
Environmental Ratings	ENV130
Export Information	ECCN #3A001.B.4 This item will require an export license when shipped to certain countries

## ORDERING INFORMATION

Model No. Links	<a href="#">WVA-60903G+</a>	<a href="#">WVA-60903GX+</a>
Option	With heatsink	Without heatsink
Product Marking	WVA-60903G+	WVA-60903GX+
Case Style	YS3481	
Connector	WR12 UG-387/U	

## NOTES

- A. Performance and quality attributes and conditions not expressly stated in this specification document are intended to be excluded and do not form a part of this specification document.
- B. Electrical specifications and performance data contained in this specification document are based on Mini-Circuit's applicable established test performance criteria and measurement instructions.
- C. The parts covered by this specification document are subject to Mini-Circuits standard limited warranty and terms and conditions (collectively, "Standard Terms"); Purchasers of this part are entitled to the rights and benefits contained therein. For a full statement of the standard terms and the exclusive rights and remedies thereunder, please visit Mini-Circuits' website at [www.minicircuits.com/terms/viewterm.html](http://www.minicircuits.com/terms/viewterm.html)

# Mouser Electronics

Authorized Distributor

Click to View Pricing, Inventory, Delivery & Lifecycle Information:

[Mini-Circuits:](#)

[WVA-60903GX+](#) [WVA-60903G+](#)