

Coaxial High Pass Filter

VHFG-1500+

50Ω 1600 to 6000 MHz



Generic photo used for illustration purposes only

CASE STYLE: FF704

The Big Deal

- Good power handling, 2.5W
- Temperature stable
- Rugged unibody construction
- Good rejection, 38 dB typical

Product Overview

VHFG-1500+ is a 50Ω high pass filter built in rugged unibody construction. Covering 1600-6000 MHz bandwidth, these units offer good matching within the passband and good rejection in stopband. VHFG-1500+ offer low insertion loss, and good power handling capability. It handles up to 2.5W RF input power and provides a wide operating temperature range from -55°C to 125°C.

Key Features

Feature	Advantages
Low passband insertion loss	Suitable for high performance application.
2.5W Power handling	Supports a range of system power requirements.
Connectorized package	The connectorized package is easy to interface with other devices and well suited for test setups.

Notes

- A. Performance and quality attributes and conditions not expressly stated in this specification document are intended to be excluded and do not form a part of this specification document.
B. Electrical specifications and performance data contained in this specification document are based on Mini-Circuit's applicable established test performance criteria and measurement instructions.
C. The parts covered by this specification document are subject to Mini-Circuits standard limited warranty and terms and conditions (collectively, "Standard Terms"); Purchasers of this part are entitled to the rights and benefits contained therein. For a full statement of the Standard Terms and the exclusive rights and remedies thereunder, please visit Mini-Circuits' website at www.minicircuits.com/MCLStore/terms.jsp



High Pass Filter

50Ω 1600 to 6000 MHz

VHFG-1500+



Features

- Temperature stable
- Good power handling, 2.5W
- Connectorized package
- Rugged unibody construction

Generic photo used for illustration purposes only
CASE STYLE: FF704

+RoHS Compliant

The +Suffix identifies RoHS Compliance. See our web site for RoHS Compliance methodologies and qualifications

Applications

- Transmitters / Receivers
- Test and measurement
- Military applications
- Telecommunications and broadband wireless systems

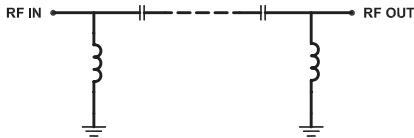
Electrical Specifications at 25°C

Parameter		F#	Frequency (MHz)	Min.	Typ.	Max.	Unit
Stop Band	Rejection Loss	DC-F1	DC - 800	30	38	-	dB
		F1-F2	800 - 1000	28	37	-	dB
	Freq. Cut-Off	F3*	1400	-	3.0	-	dB
Pass Band	Insertion Loss	F4-F5	1600 - 1900	-	2.0	-	dB
		F5-F6	1900 - 5000	-	1.2	1.9	dB
		F6-F7	5000 - 6000	-	2.0	-	dB
Return Loss		F4-F7	1600 - 6000	-	9	-	dB

In Applications where DC voltage is present at either input or output ports, DC blocks are required.

* Typically, a $\pm 5\%$ frequency deviation from the stated value may occur on a unit-to-unit basis.

Functional Schematic



Maximum Ratings

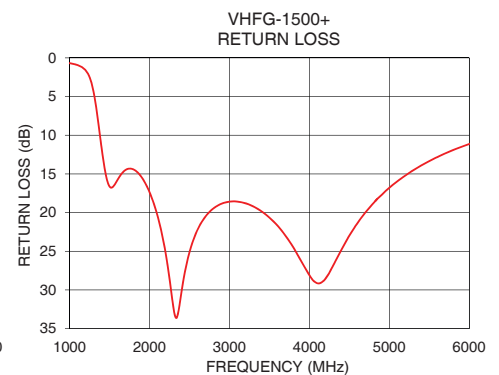
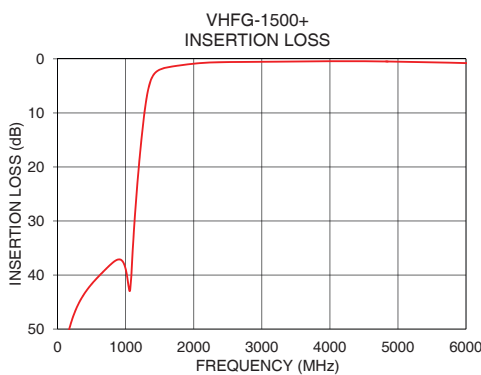
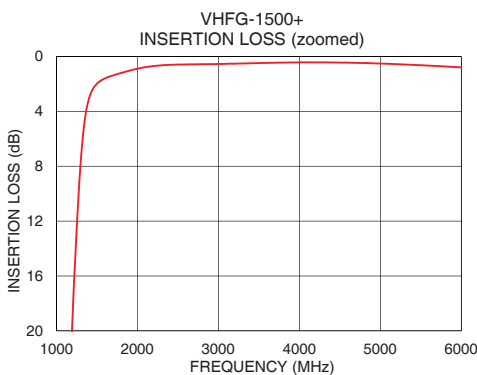
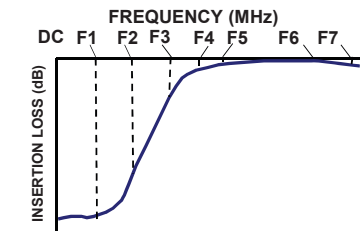
Operating Temperature	-55°C to 125°C
Storage Temperature	-55°C to 125°C
RF Power Input*	2.5W max. @ 25°C

*Passband rating, derate linearly to 0.5W at 125°C ambient
Permanent damage may occur if any of these limits are exceeded.

Typical Performance Data at 25°C

Frequency (MHz)	Insertion Loss (dB)	Return Loss (dB)
10	73.64	0.11
100	54.46	0.16
800	37.81	0.48
1000	38.93	0.68
1120	31.88	1.01
1180	21.76	1.39
1200	18.91	1.59
1300	7.74	4.39
1400	3.12	11.60
1500	1.99	16.63
1600	1.59	15.77
1900	1.03	15.40
2000	0.89	17.35
2500	0.59	25.13
3000	0.54	18.58
4000	0.43	28.09
5000	0.51	16.78
5500	0.63	13.34
5700	0.69	12.34
6000	0.79	11.14

Typical Frequency Response



Notes

- A. Performance and quality attributes and conditions not expressly stated in this specification document are intended to be excluded and do not form a part of this specification document.
B. Electrical specifications and performance data contained in this specification document are based on Mini-Circuits' applicable established test performance criteria and measurement instructions.
C. The parts covered by this specification document are subject to Mini-Circuits standard limited warranty and terms and conditions (collectively, "Standard Terms"); Purchasers of this part are entitled to the rights and benefits contained therein. For a full statement of the Standard Terms and the exclusive rights and remedies thereunder, please visit Mini-Circuits' website at www.minicircuits.com/MCLStore/terms.jsp

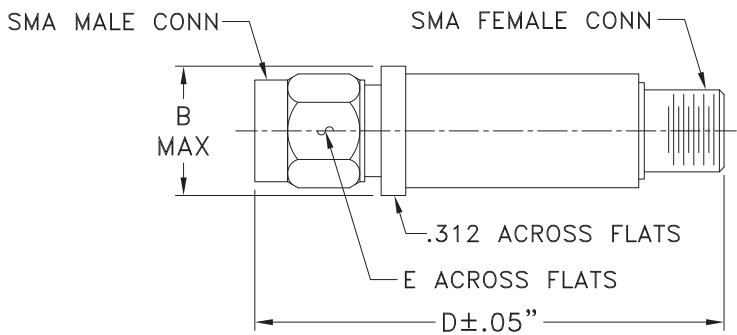


www.minicircuits.com P.O. Box 350166, Brooklyn, NY 11235-0003 (718) 934-4500 sales@minicircuits.com

Coaxial Connections

PORT - 1	SMA-Male
PORT - 2	SMA-Female

Outline Drawing



Outline Dimensions (inch mm)

B	D	E	wt.
.410	1.43	.312	grams
10.41	36.32	7.92	10

Note: Please refer to case style drawing for details

Notes
A. Performance and quality attributes and conditions not expressly stated in this specification document are intended to be excluded and do not form a part of this specification document.
B. Electrical specifications and performance data contained in this specification document are based on Mini-Circuit's applicable established test performance criteria and measurement instructions.
C. The parts covered by this specification document are subject to Mini-Circuits standard limited warranty and terms and conditions (collectively, "Standard Terms"); Purchasers of this part are entitled to the rights and benefits contained therein. For a full statement of the Standard Terms and the exclusive rights and remedies thereunder, please visit Mini-Circuits' website at www.minicircuits.com/MCLStore/terms.jsp

Mouser Electronics

Authorized Distributor

Click to View Pricing, Inventory, Delivery & Lifecycle Information:

[Mini-Circuits:](#)

[VHFG-1500+](#)