

Plug-In RF Transformer

50Ω 0.004 to 300 MHz

TT1-6-X65+
TT1-6-X65



CASE STYLE: X65

Maximum Ratings

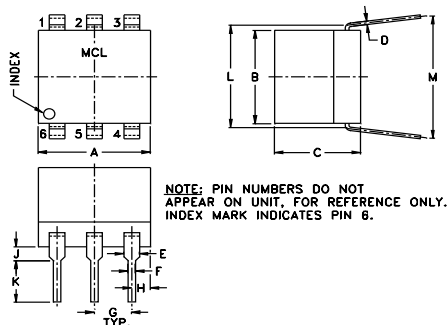
| | |
|-----------------------|---------------|
| Operating Temperature | -20°C to 85°C |
| Storage Temperature | 55°C to 100°C |
| RF Power | 250mW |
| DC Current | 30mA |

Permanent damage may occur if any of these limits are exceeded.

Pin Connections

| | |
|---------------|---|
| PRIMARY DOT | 4 |
| PRIMARY | 6 |
| PRIMARY CT | 5 |
| SECONDARY DOT | 3 |
| SECONDARY | 1 |
| SECONDARY CT | 2 |

Outline Drawing

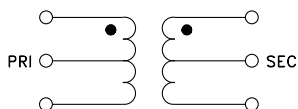


Outline Dimensions (inch)

| A | B | C | D | E | F | G |
|------|------|------|------|------|------|------|
| .30 | .27 | .23 | .010 | .042 | .020 | .100 |
| 7.62 | 6.86 | 5.84 | 0.25 | 1.07 | 0.51 | 2.54 |

| H | J | K | L | M | wt |
|------|------|------|------|------|-------|
| .05 | .04 | .11 | .300 | .35 | grams |
| 1.27 | 1.02 | 2.79 | 7.62 | 8.89 | 0.50 |

Config. B



Features

- wideband, 0.004 to 300 MHz
- good return loss
- also available with flat-pack (W38) & surface mount gull-wing (KK81) leads

Applications

- HF/VHF
- impedance matching
- balanced antenna

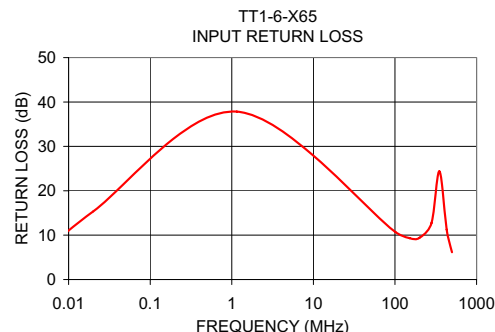
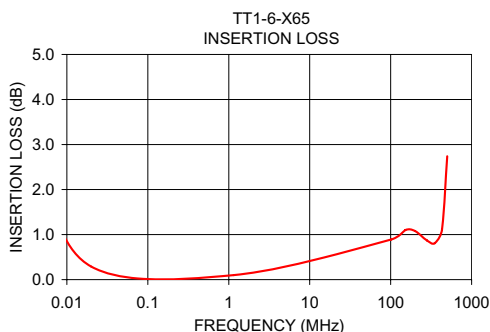
Transformer Electrical Specifications

| Ω RATIO | FREQUENCY (MHz) | INSERTION LOSS* | | |
|------------|--------------------|-----------------|-------------|-------------|
| | | 3 dB MHz | 2 dB MHz | 1 dB MHz |
| 1 | 0.004-300 | 0.004-300 | 0.02-200 | 0.1-50 |

* Insertion Loss is specified with input at pin 4 and output at pin 1 with pins 6 & 3 grounded and pins 2 & 5 open.

Typical Performance Data

| FREQUENCY (MHz) | INSERTION LOSS (dB) | INPUT R. LOSS (dB) |
|--------------------|---------------------------|--------------------------|
| 0.004 | 2.53 | 4.71 |
| 0.020 | 0.29 | 15.34 |
| 1.150 | 0.10 | 37.84 |
| 100.860 | 0.89 | 10.71 |
| 151.510 | 1.10 | 9.32 |
| 200.000 | 1.08 | 9.41 |
| 280.250 | 0.87 | 12.74 |
| 350.000 | 0.81 | 24.39 |
| 430.250 | 1.11 | 11.24 |
| 500.000 | 2.74 | 6.16 |



Notes

- Performance and quality attributes and conditions not expressly stated in this specification document are intended to be excluded and do not form a part of this specification document.
- Electrical specifications and performance data contained in this specification document are based on Mini-Circuit's applicable established test performance criteria and measurement instructions.
- The parts covered by this specification document are subject to Mini-Circuits standard limited warranty and terms and conditions (collectively, "Standard Terms"); Purchasers of this part are entitled to the rights and benefits contained therein. For a full statement of the Standard Terms and the exclusive rights and remedies thereunder, please visit Mini-Circuits' website at www.minicircuits.com/MCLStore/terms.jsp



Mouser Electronics

Authorized Distributor

Click to View Pricing, Inventory, Delivery & Lifecycle Information:

[Mini-Circuits:](#)

[TT1-6-X65+](#)