

Coaxial Low Pass Filter

SLP-36+

50Ω

DC to 36 MHz



Generic photo used for illustration purposes only
CASE STYLE: FF99

The Big Deal

- Low insertion loss, 0.6 dB typ.
- High rejection, 46 dB typ.
- Sharp cut-off
- Good VSWR, 1.2:1 typ. in passband
- Connectorized package

Product Overview

SLP-36+ is a 50Ω Low pass filter in a connectorized package covering DC to 36 MHz. This filter uses miniature high Q capacitors and wire welded inductors for high reliability. This filter offers high rejection and low insertion loss. It has consistent performance across temperature and repeatable performance across production lots.

Key Features

Feature	Advantages
Low insertion loss, 0.6 dB typ.	It enables the filter to be used in high performance applications.
High rejection, 46 dB typ.	Attenuates unwanted spurious signals and harmonics.
Sharp cut-off	This enables the filter rejects the near band interaction and provides the high selectivity.
Good VSWR, 1.2:1 typical in passband	This provides good matching when used with other devices.
Connectorized package	Easy to interface with other devices and well suited for test setups.

Notes

- A. Performance and quality attributes and conditions not expressly stated in this specification document are intended to be excluded and do not form a part of this specification document.
B. Electrical specifications and performance data contained in this specification document are based on Mini-Circuit's applicable established test performance criteria and measurement instructions.
C. The parts covered by this specification document are subject to Mini-Circuits standard limited warranty and terms and conditions (collectively, "Standard Terms"); Purchasers of this part are entitled to the rights and benefits contained therein. For a full statement of the Standard Terms and the exclusive rights and remedies thereunder, please visit Mini-Circuits' website at www.minicircuits.com/MCLStore/terms.jsp



www.minicircuits.com P.O. Box 350166, Brooklyn, NY 11235-0003 (718) 934-4500 sales@minicircuits.com

Low Pass Filter

50Ω DC to 36 MHz

SLP-36+



Generic photo used for illustration purposes only

Features

- Low insertion loss, 0.6 dB typ.
- High rejection, 46 dB typ.
- Good VSWR, 1.2:1 typical in passband
- Sharp cut-off
- Rugged shielded case
- Connectorized package

Applications

- Defense communications
- Transmitters / Receivers
- Harmonic rejection

CASE STYLE: FF99

Connectors	Model
SMA	SLP-36+

Electrical Specifications at 25°C

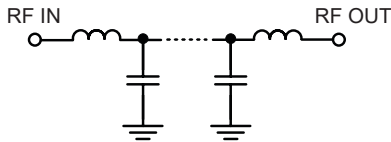
Parameter	F#	Frequency (MHz)	Min.	Typ.	Max.	Unit
Pass Band	Insertion Loss	DC-F1	DC - 36	—	0.6	dB
	Freq. Cut-Off	F2	40	—	3.0	dB
	VSWR	DC-F1	DC - 36	—	1.2	:1
Stop Band	Rejection Loss	F3-F4	50 - 57	20	30	dB
		F4-F5	57 - 560	40	46	dB

Maximum Ratings

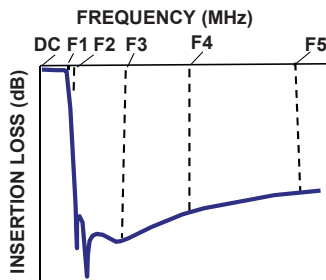
Operating Temperature	-40°C to 85°C
Storage Temperature	-55°C to 100°C
RF Power Input	0.5 W max.

Permanent damage may occur if any of these limits are exceeded.

Functional Schematic



Typical Frequency Response

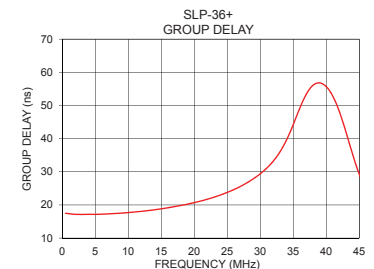
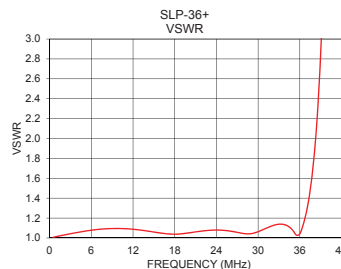
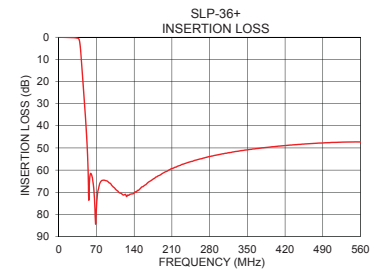
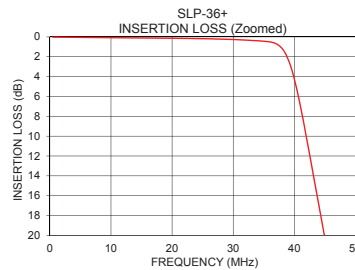


+RoHS Compliant

The +Suffix identifies RoHS Compliance. See our web site for RoHS Compliance methodologies and qualifications

Typical Performance Data at 25°C

Frequency (MHz)	Insertion Loss (dB)	VSWR (:1)	Frequency (MHz)	Group Delay (ns)
0.5	0.02	1.01	0.5	17.48
10.0	0.08	1.10	1.0	17.37
20.0	0.13	1.05	2.0	17.16
22.0	0.15	1.07	4.0	17.17
24.0	0.17	1.08	6.0	17.21
30.0	0.26	1.06	8.0	17.41
35.0	0.43	1.08	10.0	17.70
36.0	0.50	1.04	12.0	18.07
39.5	3.15	3.75	14.0	18.55
40.0	4.25	5.03	16.0	19.13
45.0	20.31	39.93	18.0	19.84
48.0	30.41	60.13	20.0	20.69
50.0	37.50	70.31	22.0	21.73
57.0	65.49	98.85	24.0	23.01
100.0	67.31	132.70	26.0	24.63
200.0	60.64	103.83	28.0	26.69
300.0	52.88	88.51	30.0	29.39
400.0	49.40	78.75	36.0	49.20
500.0	47.60	72.44	37.0	53.47
560.0	47.29	68.70	40.0	55.69



Notes

- Performance and quality attributes and conditions not expressly stated in this specification document are intended to be excluded and do not form a part of this specification document.
- Electrical specifications and performance data contained in this specification document are based on Mini-Circuit's applicable established test performance criteria and measurement instructions.
- The parts covered by this specification document are subject to Mini-Circuits standard limited warranty and terms and conditions (collectively, "Standard Terms"); Purchasers of this part are entitled to the rights and benefits contained therein. For a full statement of the Standard Terms and the exclusive rights and remedies thereunder, please visit Mini-Circuits' website at www.minicircuits.com/MCLStore/terms.jsp



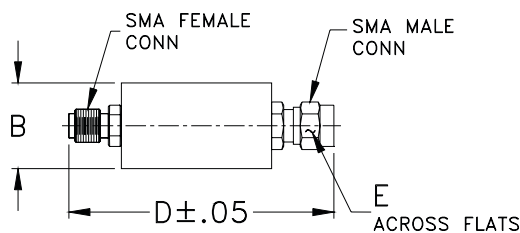
www.minicircuits.com P.O. Box 350166, Brooklyn, NY 11235-0003 (718) 934-4500 sales@minicircuits.com

REV.A
ECO-003419
SLP-36+
EDU3732
URJ
200725
Page 2 of 3

Coaxial Connections

PORT - 1	SMA-Male
PORT - 2	SMA-Female

Outline Drawing



Outline Dimensions (^{inch}_{mm})

B	D	E	Wt.
.70	1.98	.312	grams
17.78	50.29	7.92	42.0

Note: Please refer to case style drawing for details

Notes
A. Performance and quality attributes and conditions not expressly stated in this specification document are intended to be excluded and do not form a part of this specification document.
B. Electrical specifications and performance data contained in this specification document are based on Mini-Circuit's applicable established test performance criteria and measurement instructions.
C. The parts covered by this specification document are subject to Mini-Circuits standard limited warranty and terms and conditions (collectively, "Standard Terms"); Purchasers of this part are entitled to the rights and benefits contained therein. For a full statement of the Standard Terms and the exclusive rights and remedies thereunder, please visit Mini-Circuits' website at www.minicircuits.com/MCLStore/terms.jsp

Mouser Electronics

Authorized Distributor

Click to View Pricing, Inventory, Delivery & Lifecycle Information:

[Mini-Circuits:](#)

[SLP-36+](#)