

Surface Mount Low Pass Filter

RLP-1094+

50Ω

DC to 1094 MHz

The Big Deal

- Passband (DC to 1094 MHz)
- Low Insertion Loss (0.7 dB typical)
- Good VSWR (1.4:1 typical)
- High Rejection
- Very small size (0.35" x 0.35" x 0.10")
- High power handling (3.5W)



Generic photo used for illustration purposes only
CASE STYLE: GP731

Product Overview

The RLP-1094+ is a Lowpass filter fabricated using SMT technology. Covering up to 1094 MHz, this model offers very low passband insertion loss of 0.7 dB typical, good matching within the passband and high rejection. In addition it has repeatable performance across production lots and consistent performance across temperature.

Key Features

Feature	Advantages
Good VSWR, 1.4:1 typical in passband	This provides well matched input and output ports.
Flat group delay characteristics	The model has a group delay flatness of 0.5 nsec which helps in reducing the signal distortion.
More than 40 dB rejection up to 3400 MHz	This enables the filter to attenuate spurious signals and reject harmonics over a broad frequency band.
Small size, 0.35" x 0.35" x 0.10"	The surface mount package enables the RLP-1094+ to be used in compact designs.
Shielded case	Reduced interference with and from the surrounding components.

Notes

A. Performance and quality attributes and conditions not expressly stated in this specification document are intended to be excluded and do not form a part of this specification document.
B. Electrical specifications and performance data contained in this specification document are based on Mini-Circuit's applicable established test performance criteria and measurement instructions.
C. The parts covered by this specification document are subject to Mini-Circuits standard limited warranty and terms and conditions (collectively, "Standard Terms"); Purchasers of this part are entitled to the rights and benefits contained therein. For a full statement of the Standard Terms and the exclusive rights and remedies thereunder, please visit Mini-Circuits' website at www.minicircuits.com/MCStore/terms.jsp



www.minicircuits.com P.O. Box 350166, Brooklyn, NY 11235-0003 (718) 934-4500 sales@minicircuits.com

Surface Mount Low Pass Filter

50Ω DC to 1094 MHz

RLP-1094+



Generic photo used for illustration purposes only
CASE STYLE: GP731

Features

- High rejection
- Good VSWR, 1.4:1 typical in passband
- Aqueous washable

Applications

- TV Broad casting
- Wireless communications
- VHF/UHF receivers / transmitters
- Military

Electrical Specifications at 25°C

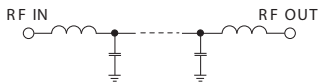
Parameter	F#	Frequency (MHz)	Min.	Typ.	Max.	Unit
Pass Band	Insertion Loss	DC-F1	DC-1094	—	0.7	dB
	Freq. Cut-Off	F2	1380	—	3.0	dB
	VSWR	DC-F1	DC-1094	—	1.4	:1
Stop Band	Rejection Loss	F3-F4	1700-3650	20	28	dB
	VSWR	F3-F4	1700-3650	—	37	:1

Maximum Ratings

Operating Temperature	-40°C to 85°C
Storage Temperature	-55°C to 100°C
RF Power Input	3.5W max.

Permanent damage may occur if any of these limits are exceeded.

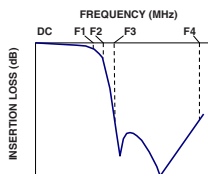
Functional Schematic



Typical Performance Data at 25°C

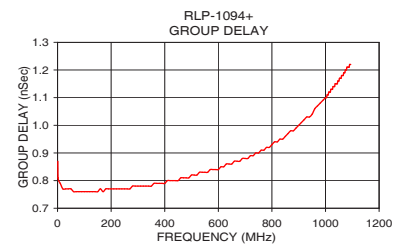
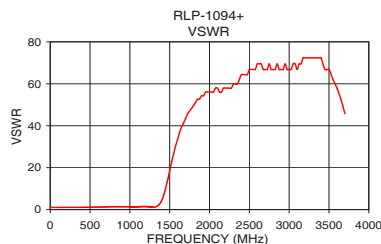
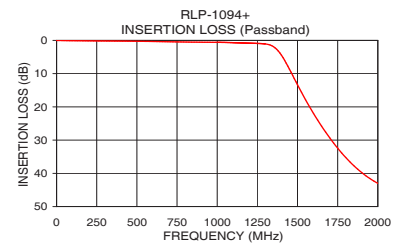
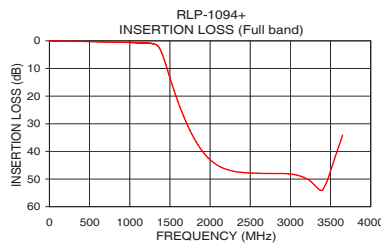
Frequency (MHz)	Insertion Loss (dB)	VSWR (:1)	Frequency (MHz)	Group Delay (nsec)
1.0	0.02	1.00	1.0	0.87
20.0	0.04	1.01	2.0	0.81
80.0	0.09	1.03	10.0	0.79
300.0	0.18	1.04	20.0	0.77
640.0	0.37	1.24	70.0	0.76
1000.0	0.61	1.34	100.0	0.76
1050.0	0.66	1.35	150.0	0.76
1094.0	0.72	1.39	200.0	0.77
1130.0	0.79	1.43	300.0	0.78
1250.0	0.95	1.34	400.0	0.79
1350.0	1.85	1.84	450.0	0.80
1380.0	3.18	3.05	500.0	0.82
1430.0	6.98	7.47	600.0	0.84
1500.0	13.50	18.50	650.0	0.86
1650.0	25.90	39.49	700.0	0.88
1700.0	29.36	43.44	800.0	0.93
1900.0	39.84	54.29	900.0	1.00
2300.0	47.40	59.91	1000.0	1.10
3400.0	53.85	72.39	1050.0	1.16
3650.0	35.73	52.65	1094.0	1.22

Typical Frequency Response



+RoHS Compliant

The +Suffix identifies RoHS Compliance. See our web site for RoHS Compliance methodologies and qualifications



Notes

- Performance and quality attributes and conditions not expressly stated in this specification document are intended to be excluded and do not form a part of this specification document.
- Electrical specifications and performance data contained in this specification document are based on Mini-Circuits' applicable established test performance criteria and measurement instructions.
- The parts covered by this specification document are subject to Mini-Circuits standard limited warranty and terms and conditions (collectively, "Standard Terms"); Purchasers of this part are entitled to the rights and benefits contained therein. For a full statement of the Standard Terms and the exclusive rights and remedies thereunder, please visit Mini-Circuits' website at www.minicircuits.com/MCStore/terms.jsp



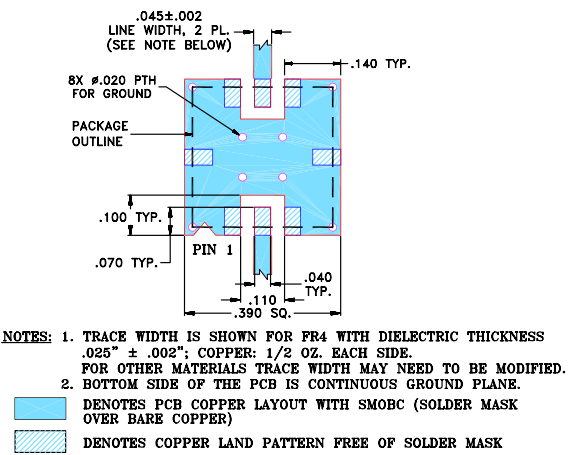
www.minicircuits.com P.O. Box 350166, Brooklyn, NY 11235-0003 (718) 934-4500 sales@minicircuits.com

REV. B
ECO-005139
RLP-1094+
EDR-9915UF
RAV/URJ/NY
201130
Page 2 of 3

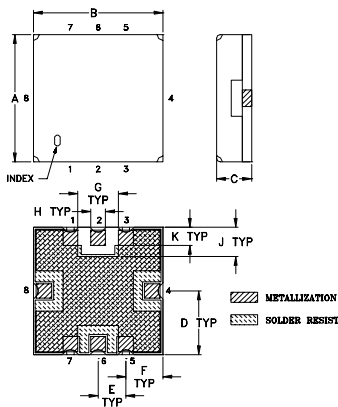
Pad Connections

INPUT	2
OUTPUT	6
GROUND	1,3,4,5,7,8

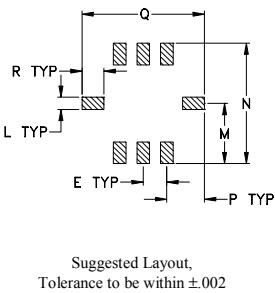
Demo Board MCL P/N: TB-332
Suggested PCB Layout (PL-176)



Outline Drawing



PCB Land Pattern



Outline Dimensions (Inch mm)

A	B	C	D	E	F	G	H	J
.350	.350	.100	.175	.075	.100	.110	.040	.080
8.89	8.89	2.54	4.45	1.91	2.54	2.79	1.02	2.03
K	L	M	N	P	Q	R		wt
.050	.040	.195	.390	.120	.390	.070		grams
1.27	1.02	4.95	9.91	3.05	9.91	1.78		0.25

Note: Please refer to case style drawing for details

Notes
A. Performance and quality attributes and conditions not expressly stated in this specification document are intended to be excluded and do not form a part of this specification document.
B. Electrical specifications and performance data contained in this specification document are based on Mini-Circuit's applicable established test performance criteria and measurement instructions.
C. The parts covered by this specification document are subject to Mini-Circuits standard limited warranty and terms and conditions (collectively, "Standard Terms"); Purchasers of this part are entitled to the rights and benefits contained therein. For a full statement of the Standard Terms and the exclusive rights and remedies thereunder, please visit Mini-Circuits' website at www.minicircuits.com/MCLStore/terms.jsp

Mouser Electronics

Authorized Distributor

Click to View Pricing, Inventory, Delivery & Lifecycle Information:

[Mini-Circuits:](#)

[RLP-1094+](#)