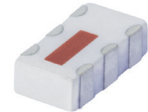


# Ultra-Small Ceramic Power Splitter/Combiner

## QCN-19+

2 Way-90° 50Ω 1100 to 1925 MHz



Generic photo used for illustration purposes only  
CASE STYLE: FV1206-1

### Maximum Ratings

Operating Temperature	-55°C to 100°C
Storage Temperature	-55°C to 100°C
Power Input (as a splitter)	15W* max.

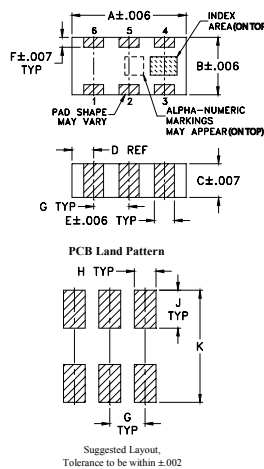
\* Derate linearly to 7W at 100°C ambient.  
Permanent damage may occur if any of these limits are exceeded.

### Pin Connections

SUM PORT	1
PORT 1 (0°)	4
PORT 2 (+90°)	6
GROUND	2,5
50 OHM TERM EXTERNAL	3

### Product Marking: SC

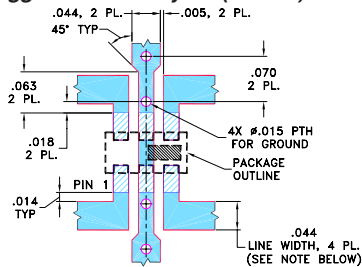
### Outline Drawing



### Outline Dimensions (inch/mm)

A	B	C	D	E	F	G	H	J	K	wt
.126	.063	.035	.024	.022	.011	.039	.024	.042	.123	grams
3.20	1.60	0.89	0.61	0.56	0.28	0.99	0.61	1.07	3.12	.020

### Demo Board MCL P/N: TB-255+ Suggested PCB Layout (PL-131)



- NOTES: 1. TRACE WIDTH IS SHOWN FOR ROGERS R04350B WITH DIELECTRIC THICKNESS 0.020" ± 0.0015"; COPPER: 1/2 OZ. EACH SIDE. FOR OTHER MATERIALS TRACE WIDTH MAY NEED TO BE MODIFIED.  
2. BOTTOM SIDE OF THE PCB IS CONTINUOUS GROUND PLANE.
- DENOTES PCB COPPER LAYOUT WITH SMOBC (SOLDER MASK OVER BARE COPPER)
  - DENOTES COPPER LAND PATTERN FREE OF SOLDER MASK

### Notes

- A. Performance and quality attributes and conditions not expressly stated in this specification document are intended to be excluded and do not form a part of this specification document.  
B. Electrical specifications and performance data contained in this specification document are based on Mini-Circuit's applicable established test performance criteria and measurement instructions.  
C. The parts covered by this specification document are subject to Mini-Circuit's standard limited warranty and terms and conditions (collectively, "Standard Terms"); Purchasers of this part are entitled to the rights and benefits contained therein. For a full statement of the Standard Terms and the exclusive rights and remedies thereunder, please visit Mini-Circuit's website at [www.minicircuits.com/MCLStore/terms.jsp](http://www.minicircuits.com/MCLStore/terms.jsp)

### Features

- low insertion loss, 0.4 dB typ.
- high isolation, 26 dB typ.
- wrap-around terminal for excellent solderability
- ultra small, 0.12"X0.06"X0.035"
- patent pending

### Applications

- GPS
- PCS/DCS
- balanced amplifiers
- modulators

### Electrical Specifications

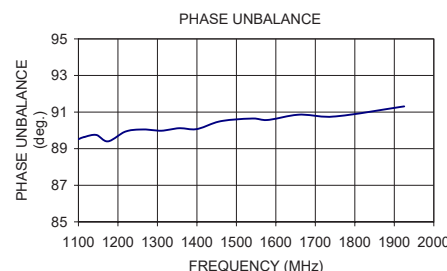
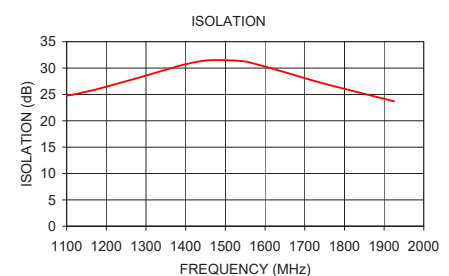
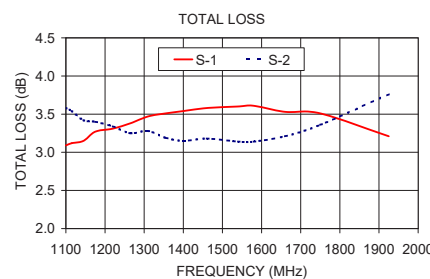
FREQ. RANGE (MHz)	ISOLATION (dB)		INSERTION LOSS (dB) Avg. of Coupled Outputs ABOVE 3 dB		PHASE UNBALANCE (Degrees)		AMPLITUDE UNBALANCE (dB)		VSWR (:1)
	Typ.	Min.	Typ.	Max.	Typ.	Max.	Typ.	Max.	
1100-1925									
1100-1400	25	19	0.4	0.7	1	3	0.4	1.1	1.15
1400-1600	26	20	0.4	0.8	2	4	0.5	1.0	1.2
1600-1925	26	20	0.5	0.9	2	4	0.4	1.1	1.2

1. For applications requiring DC voltage to be applied to the RF ports, add suffix letter "D" to part no.  
DC resistance to ground is 100 Mohms min.

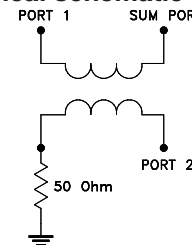
### Typical Performance Data

Frequency (MHz)	Total Loss <sup>1</sup> (dB)		Amplitude Unbalance (dB)	Isolation (dB)	Phase Unbalance (deg.)	VSWR S	VSWR 1	VSWR 2
	S-1	S-2						
1100.00	3.09	3.58	0.49	24.79	89.52	1.10	1.11	1.15
1115.00	3.12	3.54	0.42	24.96	89.64	1.09	1.10	1.14
1145.00	3.15	3.42	0.27	25.45	89.75	1.08	1.10	1.14
1175.00	3.27	3.40	0.13	25.96	89.40	1.07	1.09	1.13
1220.00	3.31	3.34	0.03	26.88	89.94	1.06	1.08	1.12
1265.00	3.38	3.25	0.13	27.82	90.05	1.05	1.07	1.11
1310.00	3.47	3.28	0.19	28.81	89.98	1.04	1.06	1.10
1355.00	3.51	3.19	0.31	29.78	90.12	1.04	1.05	1.09
1400.00	3.54	3.15	0.39	30.74	90.07	1.04	1.04	1.07
1460.00	3.58	3.18	0.39	31.49	90.50	1.04	1.03	1.06
1540.00	3.60	3.14	0.45	31.34	90.65	1.06	1.02	1.04
1580.00	3.61	3.14	0.46	30.69	90.57	1.07	1.02	1.04
1660.00	3.53	3.21	0.32	28.99	90.86	1.10	1.02	1.02
1750.00	3.51	3.36	0.16	27.04	90.76	1.14	1.03	1.01
1925.00	3.21	3.76	0.55	23.71	91.31	1.21	1.06	1.05

1. Total Loss = Insertion Loss + 3dB splitter loss.



### electrical schematic (Note 1)



# Mouser Electronics

Authorized Distributor

Click to View Pricing, Inventory, Delivery & Lifecycle Information:

[Mini-Circuits:](#)

[QCN-19+](#)