



Mini-Circuits

COAXIAL

Adapter

KM-24M+

50 Ω DC to 40 GHz 2.92 mm-Male to 2.4 mm-Male

THE BIG DEAL

- Ultra-Wideband, DC to 40 GHz
- Low Insertion Loss, 0.06 dB Typ.
- Excellent VSWR, 1.06:1 Typ.
- Flat response



Generic photo used for illustration purposes only

APPLICATIONS

- Interconnection of RF cable and equipment

| | |
|------------|-----------------------------|
| Model No. | KM-24M+ |
| Case Style | DJ2384 |
| Connectors | 2.92 mm Male to 2.4 mm Male |

+RoHS Compliant

The +Suffix identifies RoHS Compliance.
See our website for methodologies and qualifications

PRODUCT OVERVIEW

Mini-Circuits' KM-24M+ is a coaxial 2.92 mm-M to 2.4 mm-M adapter supporting a wide range of applications from DC to 40 GHz. This model provides excellent VSWR, low insertion loss, and flat response versus frequency. The KM-24M+ features passivated stainless steel construction and measures only 0.81" (l) x 0.36" (dia.).

KEY FEATURES

| Features | Advantages |
|---|---|
| Wideband, DC to 40 GHz | Wide frequency range provides application flexibility and makes this model ideal for broadband and multi-band use |
| Excellent VSWR, 1.06:1 Typ. | Provides good matching for 50 Ω systems and minimizes signal reflections across wide frequency range. |
| Low Insertion Loss, 0.06 dB Typ. | Provides excellent signal power transmission from input to output. |
| Passivated stainless steel construction. | Stands up to wear and tear in demanding environments and provides excellent reliability. |
| Very wide operating temperature range, -55 to +100 °C | Withstands extreme operating conditions and is suitable for use near high power components where heat rise is common. |





COAXIAL

Adapter

KM-24M+

50Ω DC to 40 GHz 2.92 mm-Male to 2.4 mm-Male

ELECTRICAL SPECIFICATIONS AT 25°C

| Parameter | Frequency (GHz) | Min. | Typ. | Max. | Units |
|-----------------|-----------------|------|------|------|-------|
| Frequency Range | - | DC | - | 40 | GHz |
| Insertion Loss | DC - 5 | - | 0.01 | - | dB |
| | 5 - 10 | - | 0.03 | - | |
| | 10 - 20 | - | 0.06 | - | |
| | 20 - 40 | - | 0.13 | 0.6 | |
| VSWR | DC - 5 | - | 1.03 | 1.15 | :1 |
| | 5 - 10 | - | 1.02 | 1.15 | |
| | 10 - 20 | - | 1.06 | 1.15 | |
| | 20 - 40 | - | 1.08 | 1.15 | |

ABSOLUTE MAXIMUM RATINGS

| Parameter | Ratings |
|-----------------------|----------------|
| Operating Temperature | -55°C to 100°C |
| Storage Temperature | -55°C to 100°C |

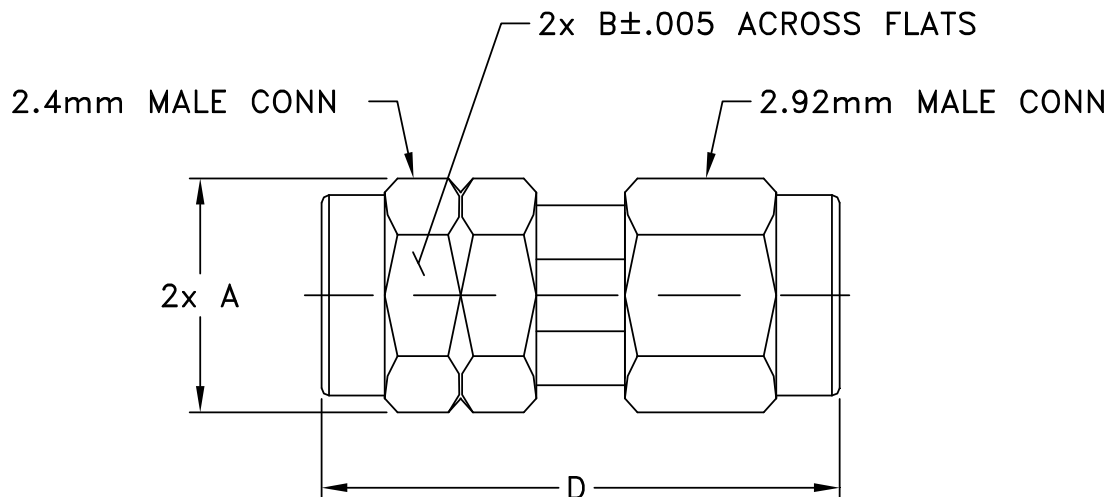
Permanent damage may occur if any of these limits are exceeded.



COAXIAL CONNECTIONS

| | |
|-------------|--------------|
| Connector 1 | 2.92 mm Male |
| Connector 2 | 2.4 mm Male |

OUTLINE DRAWING

OUTLINE DIMENSIONS (Inches
mm)

| A | B | C | D | E | wt |
|------|-------|----|-------|----|-------|
| 0.36 | 0.312 | -- | 0.807 | -- | grams |
| 9.14 | 7.93 | -- | 20.50 | -- | 5.4 |



COAXIAL

Adapter

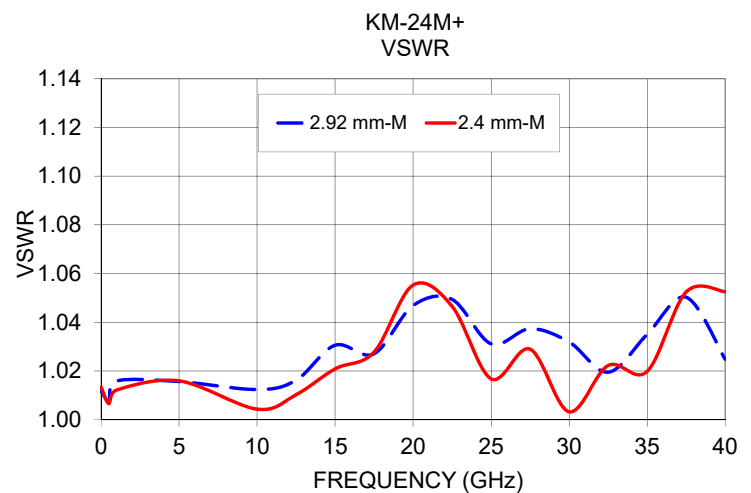
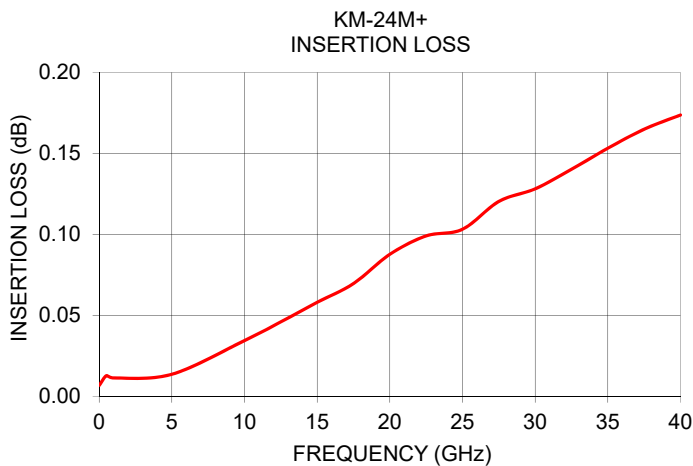
KM-24M+

Mini-Circuits

50Ω DC to 40 GHz 2.92 mm-Male to 2.4 mm-Male

TYPICAL PERFORMANCE DATA AND CHARTS

| Frequency (GHz) | Insertion Loss (dB) | VSWR (:1) | |
|--------------------|------------------------|--------------|------------|
| | | 2.92mm Male | 2.4mm Male |
| 0.01 | 0.01 | 1.01 | 1.01 |
| 0.5 | 0.01 | 1.01 | 1.01 |
| 1.0 | 0.01 | 1.02 | 1.01 |
| 5.0 | 0.01 | 1.02 | 1.02 |
| 10.0 | 0.03 | 1.01 | 1.00 |
| 12.5 | 0.05 | 1.02 | 1.01 |
| 15.0 | 0.06 | 1.03 | 1.02 |
| 17.5 | 0.07 | 1.03 | 1.03 |
| 20.0 | 0.09 | 1.05 | 1.06 |
| 22.5 | 0.10 | 1.05 | 1.05 |
| 25.0 | 0.10 | 1.03 | 1.02 |
| 27.5 | 0.12 | 1.04 | 1.03 |
| 30.0 | 0.13 | 1.03 | 1.00 |
| 32.5 | 0.14 | 1.02 | 1.02 |
| 35.0 | 0.15 | 1.04 | 1.02 |
| 37.5 | 0.16 | 1.05 | 1.05 |
| 40.0 | 0.17 | 1.02 | 1.05 |



NOTES

- Performance and quality attributes and conditions not expressly stated in this specification document are intended to be excluded and do not form a part of this specification document.
- Electrical specifications and performance data contained in this specification document are based on Mini-Circuit's applicable established test performance criteria and measurement instructions.
- The parts covered by this specification document are subject to Mini-Circuits standard limited warranty and terms and conditions (collectively, "Standard Terms"); Purchasers of this part are entitled to the rights and benefits contained therein. For a full statement of the standard terms and the exclusive rights and remedies thereunder, please visit Mini-Circuits' website at www.minicircuits.com/terms/viewterm.html



Mouser Electronics

Authorized Distributor

Click to View Pricing, Inventory, Delivery & Lifecycle Information:

[Mini-Circuits:](#)

[KM-24M+](#)