

Bandpass Filter

50Ω 100 to 480 MHz

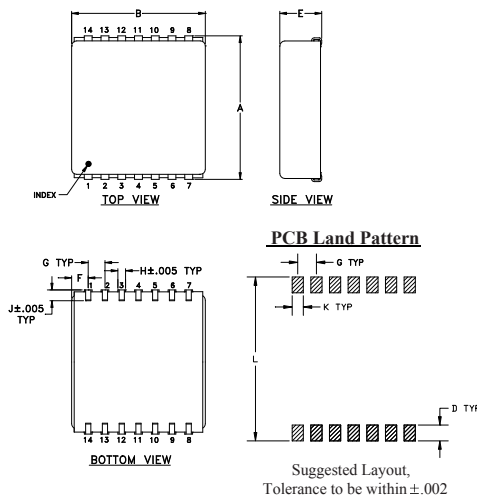
Maximum Ratings

Operating Temperature	-40°C to 85°C
Storage Temperature	-55°C to 100°C
RF Power Input	0.5W
Permanent damage may occur if any of these limits are exceeded.	

Pin Connections

INPUT	2
OUTPUT	9
GROUND	1,3,4,5,6,7,8,10,11,12,13,14

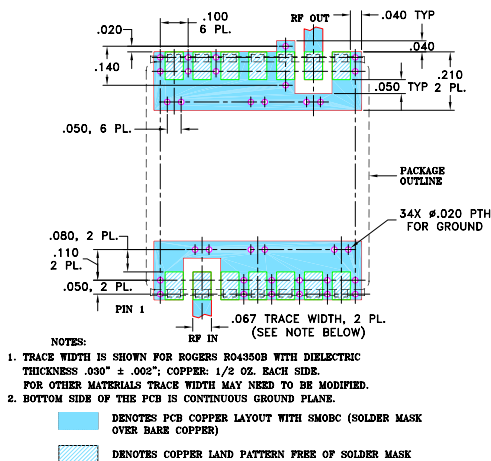
Outline Drawing



Outline Dimensions (inch/mm)

A	B	C	D	E	F
.870	.800	--	.100	.250	.100
22.09	20.32	--	2.54	6.35	2.54
G	H	J	K	L	wt.
.100	.047	.065	.065	.890	grams
2.54	1.19	1.65	1.65	22.60	4.0

Demo Board MCL P/N: TB-442+ Suggested PCB Layout(PL-269)



Features

- High stopband rejection
- Aqueous washable

Applications

- Harmonic rejection
- Transmitters/receivers
- Military communications

JCBP-290+



CASE STYLE: BG291

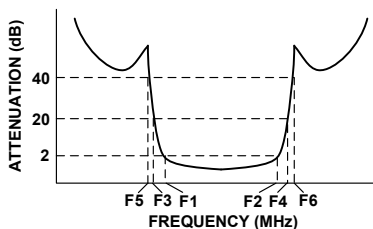
+RoHS Compliant

The +Suffix identifies RoHS Compliance. See our web site for RoHS Compliance methodologies and qualifications

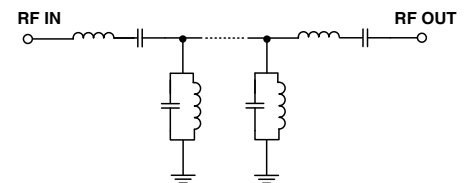
Bandpass Filter Electrical Specifications ($T_{AMB} = 25^\circ\text{C}$)

CENTER FREQ. (MHz)	PASSBAND (MHz) (Loss < 2dB) F1 - F2	STOPBANDS (MHz)				VSWR (:1)	
		Loss > 20dB		Loss > 40dB		Passband Max.	Stopband Typ.
		F3	F4	F5	F6		
290	100 - 480	65	630	50	760 - 2000	2.2	20

Typical Frequency Response

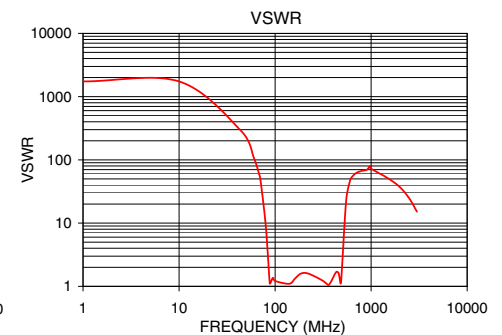
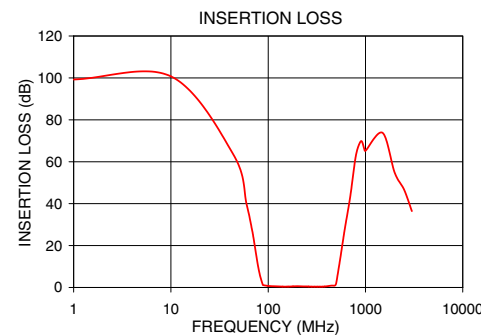


Functional Schematic



Typical Performance Data at 25°C

Frequency (MHz)	Insertion Loss (dB)	VSWR (:1)
5.0	100.66	1737.18
50.0	54.53	193.02
65.0	32.31	75.53
70.0	24.77	51.10
78.0	11.82	14.87
82.0	5.50	5.03
85.0	2.40	2.08
88.0	1.27	1.10
100.0	0.72	1.22
290.0	0.39	1.31
480.0	0.85	1.11
498.0	1.71	2.00
510.0	3.51	3.92
526.0	7.30	9.33
554.0	14.72	25.56
630.0	31.11	54.29
760.0	54.49	64.35
1500.0	73.77	51.10
2000.0	54.74	36.97



Notes

- Performance and quality attributes and conditions not expressly stated in this specification document are intended to be excluded and do not form a part of this specification document.
- Electrical specifications and performance data contained in this specification document are based on Mini-Circuit's applicable established test performance criteria and measurement instructions.
- The parts covered by this specification document are subject to Mini-Circuits standard limited warranty and terms and conditions (collectively, "Standard Terms"); Purchasers of this part are entitled to the rights and benefits contained therein. For a full statement of the Standard Terms and the exclusive rights and remedies thereunder, please visit Mini-Circuits' website at www.minicircuits.com/MCLStore/terms.jsp



Mouser Electronics

Authorized Distributor

Click to View Pricing, Inventory, Delivery & Lifecycle Information:

[Mini-Circuits:](#)

[JCBP-290+](#)