

Surface Mount

# Monolithic Amplifier

DC-6 GHz

## Product Features

- High gain, 25 dB typ. at 100 MHz
- High IP3, 35 dBm typ.
- High Pout, P1dB 19 dBm typ.
- Internally Matched to 50 Ohms
- Transient protected
- Excellent ESD Protection
- Unconditionally stable
- Aqueous washable
- Protected by US patent 6,943,629

## Typical Applications

- Base station infrastructure
- Portable Wireless
- CATV & DBS
- MMDS & Wireless LAN

## General Description

Gali≡24+ (RoHS compliant) is a wideband amplifier offering high dynamic range. It has repeatable performance from lot to lot and is enclosed in a SOT-89 package. It uses patented Transient Protected Darlington configuration and is fabricated using InGaP HBT technology. Expected MTTF is 3,000 years at 85°C case temperature. Gali≡24+ is designed to be rugged for ESD and supply switch-on transients.



Generic photo used for illustration purposes only

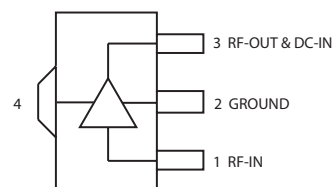
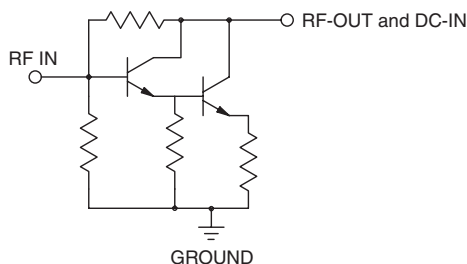
**Gali≡24+**

CASE STYLE: DF782

**+RoHS Compliant**

The +Suffix identifies RoHS Compliance. See our web site for RoHS Compliance methodologies and qualifications

## simplified schematic and pin description



Function	Pin Number	Description
RF IN	1	RF input pin. This pin requires the use of an external DC blocking capacitor chosen for the frequency of operation.
RF-OUT and DC-IN	3	RF output and bias pin. DC voltage is present on this pin; therefore a DC blocking capacitor is necessary for proper operation. An RF choke is needed to feed DC bias without loss of RF signal due to the bias connection, as shown in "Recommended Application Circuit".
GND	2,4	Connections to ground. Use via holes as shown in "Suggested Layout for PCB Design" to reduce ground path inductance for best performance.

### Notes

- A. Performance and quality attributes and conditions not expressly stated in this specification document are intended to be excluded and do not form a part of this specification document.  
B. Electrical specifications and performance data contained in this specification document are based on Mini-Circuit's applicable established test performance criteria and measurement instructions.  
C. The parts covered by this specification document are subject to Mini-Circuits standard limited warranty and terms and conditions (collectively, "Standard Terms"); Purchasers of this part are entitled to the rights and benefits contained therein. For a full statement of the Standard Terms and the exclusive rights and remedies thereunder, please visit Mini-Circuits' website at [www.minicircuits.com/MCLStore/terms.jsp](http://www.minicircuits.com/MCLStore/terms.jsp)



[www.minicircuits.com](http://www.minicircuits.com) P.O. Box 350166, Brooklyn, NY 11235-0003 (718) 934-4500 [sales@minicircuits.com](mailto:sales@minicircuits.com)

REV. B  
M151107  
ED-11756/3E  
GALI-24+  
200205  
Page 1 of 4

## Electrical Specifications at 25°C and 80mA, unless noted

Parameter		Min.	Typ.	Max.	Units	Cpk
Frequency Range*		DC		6	GHz	
Gain	f=0.1 GHz	24.0	25.3	26.6	dB	≥1.5
	f=1 GHz	—	22.6	—		
	f=2 GHz	18.1	19.1	20.1		
	f=3 GHz	—	16.6	—		
	f=4 GHz	14.2	14.9	15.6		
	f=6 GHz	—	12.4	—		
Magnitude of Gain Variation versus Temperature (values are negative)	f=0.1 GHz	—	0.0021	—	dB/°C	
	f=1 GHz	—	0.0035	—		
	f=2 GHz	—	0.0045	0.0090		
	f=3 GHz	—	0.0056	—		
	f=4 GHz	—	0.0074	—		
	f=6 GHz	—	0.0154	—		
Input Return Loss	f=0.1 GHz	—	21.6	—	dB	
	f=1 GHz	—	20.4	—		
	f=2 GHz	14	17.5	—		
	f=3 GHz	—	15.4	—		
	f=4 GHz	—	14.9	—		
	f=6 GHz	—	19.0	—		
Output Return Loss	f=0.1 GHz	—	18.5	—	dB	
	f=1 GHz	—	11.5	—		
	f=2 GHz	7	9.1	—		
	f=3 GHz	—	8.8	—		
	f=4 GHz	—	8.8	—		
	f=6 GHz	—	7.2	—		
Reverse Isolation	f=2 GHz		26.7		dB	
Output Power @ 1 dB compression	f=0.1 GHz	18.3	19.3	—	dBm	≥1.5
	f=1 GHz	18.2	19.2	—		
	f=2 GHz	18.4	19.4	—		
	f=3 GHz	—	19.3	—		
	f=4 GHz	—	18.1	—		
	f=6 GHz	—	14.7	—		
Saturated Output Power (at 3dB compression)	f=0.1 GHz		21.1		dBm	
	f=1 GHz		20.9			
	f=2 GHz		21.0			
	f=3 GHz		20.4			
	f=4 GHz		19.1			
	f=6 GHz		16.0			
Output IP3	f=0.1 GHz	30.4	33.8	—	dBm	≥1.5
	f=1 GHz	31.5	35.0	—		
	f=2 GHz	32.7	36.3	—		
	f=3 GHz	—	35.3	—		
	f=4 GHz	—	33.1	—		
	f=6 GHz	—	30.3	—		
Noise Figure	f=0.1 GHz	—	4.2	5.2	dBm	≥1.5
	f=1 GHz	—	4.3	—		
	f=2 GHz	—	4.2	5.2		
	f=3 GHz	—	4.3	—		
	f=4 GHz	—	4.5	5.5		
	f=6 GHz	—	5.3	—		
Group Delay	f=2 GHz		97		psec	
Recommended Device Operating Current			80		mA	
Device Operating Voltage		5.4	5.8	6.2	V	≥1.5
Device Voltage Variation vs. Temperature at 80mA			-3.6		mV/°C	
Device Voltage Variation vs Current at 25°C			3.3		mV/mA	
Thermal Resistance, junction-to-case <sup>1</sup>			64		°C/W	

\*Guaranteed specification DC-6 GHz. Low frequency cut off determined by external coupling capacitors.

## Absolute Maximum Ratings

Parameter	Ratings
Operating Temperature*	-45°C to 85°C
Storage Temperature	-65°C to 150°C
Operating Current	160mA
Power Dissipation	1W
Input Power	13 dBm

Note: Permanent damage may occur if any of these limits are exceeded. These ratings are not intended for continuous normal operation.

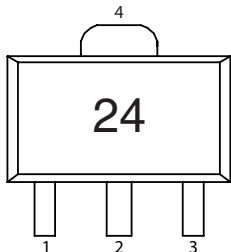
<sup>1</sup>Case is defined as ground leads.

\*Based on typical case temperature rise 7°C above ambient.

## Notes

- A. Performance and quality attributes and conditions not expressly stated in this specification document are intended to be excluded and do not form a part of this specification document.  
 B. Electrical specifications and performance data contained in this specification document are based on Mini-Circuit's applicable established test performance criteria and measurement instructions.  
 C. The parts covered by this specification document are subject to Mini-Circuits standard limited warranty and terms and conditions (collectively, "Standard Terms"); Purchasers of this part are entitled to the rights and benefits contained therein. For a full statement of the Standard Terms and the exclusive rights and remedies thereunder, please visit Mini-Circuits' website at [www.minicircuits.com/MCLStore/terms.jsp](http://www.minicircuits.com/MCLStore/terms.jsp)

Product Marking



Markings in addition to model number designation may appear for internal quality control purposes.

Additional Detailed Technical Information

Additional information is available on our web site. To access this information enter the model number on our web site home page.

Performance data, graphs, s-parameter data set (.zip file)

Case Style: DF782

Plastic package, exposed paddle, lead finish: Matte-Tin

Tape & Reel: F55

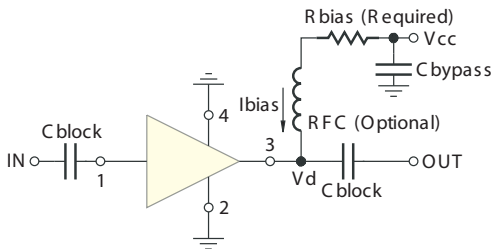
7” reels with 20, 50, 100, 200, 500, 1K devices.

Suggested Layout for PCB Design: PL-019

Evaluation Board: TB-409-24+

Environmental Ratings: ENV08T2

Recommended Application Circuit



Test Board includes case, connectors, and components (in bold) soldered to PCB

R BIAS	
Vcc	“1%” Res. Values (ohms) for Optimum Biasing
8	28.7
9	41.2
10	53.7
11	66.5
12	78.7
13	90.9
14	105
15	115
16	127
17	140
18	154
19	165
20	178

Notes  
A. Performance and quality attributes and conditions not expressly stated in this specification document are intended to be excluded and do not form a part of this specification document.  
B. Electrical specifications and performance data contained in this specification document are based on Mini-Circuit's applicable established test performance criteria and measurement instructions.  
C. The parts covered by this specification document are subject to Mini-Circuits standard limited warranty and terms and conditions (collectively, "Standard Terms"); Purchasers of this part are entitled to the rights and benefits contained therein. For a full statement of the Standard Terms and the exclusive rights and remedies thereunder, please visit Mini-Circuits' website at [www.minicircuits.com/MCLStore/terms.jsp](http://www.minicircuits.com/MCLStore/terms.jsp)

**ESD Rating**

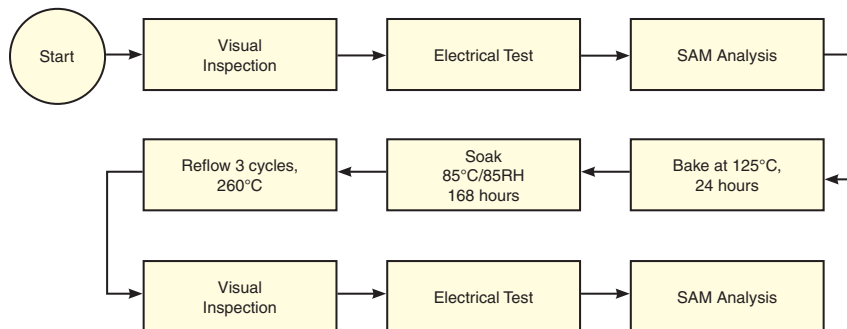
Human Body Model (HBM): Class 1C (1000v to &lt; 2000v) in accordance with ANSI/ESD STM 5.1 - 2001

Machine Model (MM): Class M2 (100v to &lt; 200v) in accordance with ANSI/ESD STM 5.2 - 1999

**MSL Rating**

Moisture Sensitivity: MSL1 in accordance with IPC/JEDECJ-STD-020C

No.	Test Required	Condition	Standard	Quantity
1	Visual Inspection	Low Power Microscope Magnification 40x	MIP-IN-0003 (MCT spec)	45 units
2	Electrical Test	Room Temperature	SCD (MCL spec)	45 units
3	SAM Analysis	Less than 10% growth in term of delamination	J-Std-020C (Jedec Standard)	45 units
4	Moisture Sensitivity Level 1	Bake at 125°C for 24 hours Soak at 85°C/85%RH for 168 hours Reflow 3 cycles at 260°C peak	J-Std-020C (Jedec Standard)	45 units

**MSL Test Flow Chart****Notes**

- A. Performance and quality attributes and conditions not expressly stated in this specification document are intended to be excluded and do not form a part of this specification document.  
 B. Electrical specifications and performance data contained in this specification document are based on Mini-Circuit's applicable established test performance criteria and measurement instructions.  
 C. The parts covered by this specification document are subject to Mini-Circuits standard limited warranty and terms and conditions (collectively, "Standard Terms"); Purchasers of this part are entitled to the rights and benefits contained therein. For a full statement of the Standard Terms and the exclusive rights and remedies thereunder, please visit Mini-Circuits' website at [www.minicircuits.com/MCLStore/terms.jsp](http://www.minicircuits.com/MCLStore/terms.jsp)



# Mouser Electronics

Authorized Distributor

Click to View Pricing, Inventory, Delivery & Lifecycle Information:

[Mini-Circuits:](#)

[GALI-24+](#)