

Ceramic

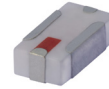
Bandpass Filter

BFCN-5540+

50Ω 4620 to 6640 MHz

The Big Deal

- LTCC construction
- Temperature stable from -55 to +100°C
- Small size (0.12 x .06 X .03")



CASE STYLE: FV1206-4

Product Overview

The BFCN-5540+ LTCC bandpass filter covers the 4620 to 6640 MHz passband with 1.2 dB passband insertion loss, 22 dB lower stopband rejection, and 30 dB upper stopband rejection. This model handles up to 1W RF input power and provides a wide operating temperature range from -55 to +100°C. Utilizing LTCC construction, the filter achieves excellent repeatability of performance and comes in a tiny 1206 ceramic package with wraparound terminations, minimizing performance variations due to parasitics and saving space in dense PCB layouts.

Key Features

Feature	Advantages
LTCC Construction	Provides a rugged package well suited for tough environments such as high humidity and temperature extremes.
Tiny size (0.12 x .06 x .03")	Saves space in dense circuit boards and minimizes the effects of parasitics.
Wrap-around terminations	Provides excellent solderability and easy visual inspection
Wide operating temperature range, -55 to +100°C	Enables reliable performance in extreme environments

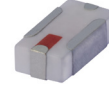
Ceramic

Bandpass Filter

50Ω

4620 to 6640 MHz

BFCN-5540+



Generic photo used for illustration purposes only

CASE STYLE: FV1206-4

Features

- Small size
- Temperature stable
- LTCC construction

Applications

- Harmonic Rejection
- Transmitters / Receivers
- Aviation
- Communications
- W-LAN

+RoHS Compliant

The +Suffix identifies RoHS Compliance.
See our website for methodologies and qualifications



Available Tape and Reel
at no extra cost

Reel Size	Devices/Reel
7"	20, 50, 100, 200, 500, 1000, 3000

Electrical Specifications^(1,2) at 25°C

Parameter		F#	Frequency (MHz)	Min.	Typ.	Max.	Unit
Pass Band	Center Frequency	—	—	—	5540	—	MHz
	Insertion Loss	F1-F2	4620-6640	—	1.2	4	dB
	VSWR	F1-F2	4620-6640	—	2.1	—	:1
Stop Band, Lower	Insertion Loss	DC-F3	DC-3470	17	22	—	dB
	VSWR	DC-F3	DC-3470	—	25	—	:1
Stop Band, Upper	Insertion Loss	F4-F5	8060-8820	13	30	—	dB
		F5-F6	8820-10990	—	17	—	dB
	VSWR	F4-F6	8060-10990	—	25	—	:1

1. Measured on Mini-Circuits Characterization Test Board TB-824+.

2. This filter is not intended for use as a DC Blocking circuit element. In Application where DC voltage is present at either input or output ports, blocking capacitors are required at the corresponding RF port.

Maximum Ratings

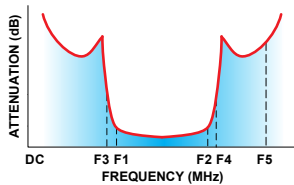
Operating Temperature	-55°C to +100°C
Storage Temperature	-55°C to +100°C
RF Power Input*	1W at 25°C

*Passband rating, derate linearly to 0.25W at 100°C ambient
Permanent damage may occur if any of these limits are exceeded.

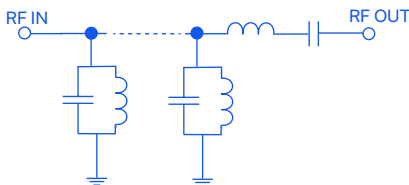
Typical Performance Data at 25°C

Frequency (MHz)	Insertion Loss (dB)	VSWR (:1)
1000	36.33	65.08
2000	25.57	46.87
3400	37.28	39.50
4600	1.39	1.58
5000	1.48	1.95
6600	2.33	2.10
7000	3.54	1.62
7500	16.69	9.78
8000	38.25	15.07
8600	45.83	14.11
9000	35.68	14.34
9500	30.89	17.30
10000	29.47	22.09
10900	40.64	27.46
11000	38.85	26.92

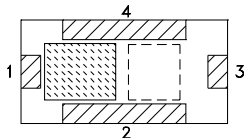
Specification Definition



Functional Schematic



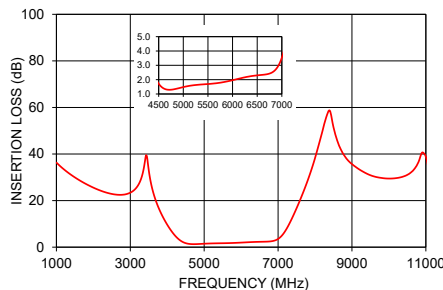
Top View



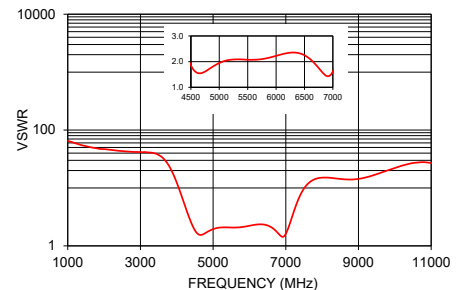
Pad Connections

Input	1
Output	3
Ground	2,4

BFCN-5540+
INSERTION LOSS



BFCN-5540+
VSWR



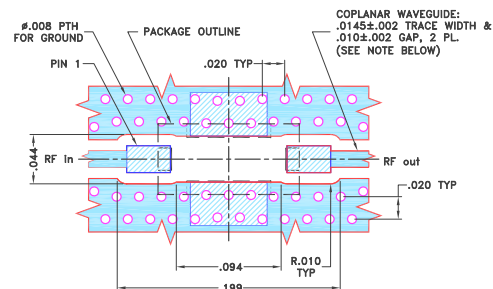
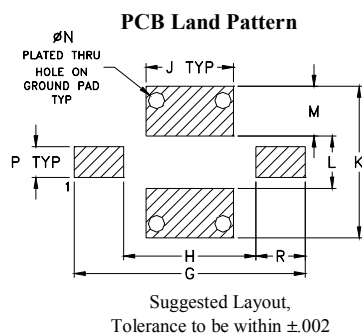
Mini-Circuits

www.minicircuits.com P.O. Box 20188, Brooklyn, NY 11220-0188 (718) 354-6000 sales@minicircuits.com

REV. B
ECO-023234
BFCN-5540+
241004

BFCN-5540+

**Demo Board MCL P/N: TB-824+
Suggested PCB Layout (PL-454)**



Input	1
Output	3
Ground	2,4

Outline Dimensions ($\frac{\text{inch}}{\text{mm}}$)

A	B	C	D	E	F	G	H	J
.126	.063	.037	.026	.075	.012	.182	.104	.069
3.20	1.60	0.94	0.66	1.91	0.30	4.62	2.64	1.75
K	L	M	N	P	Q	R		wt
.119	.041	.039	.013	.024	.020	.039		grams
3.02	1.04	0.99	0.33	0.61	0.51	0.99		.020

NOTES

Performance and quality attributes and conditions not expressly stated in this specification document are intended to be excluded and do not form a part of this specification document.

Electrical specifications and performance data contained in this specification document are based on Mini-Circuit's applicable established test performance criteria and measurement instructions.

The parts covered by this specification document are subject to Mini-Circuits standard limited warranty and terms and conditions (collectively, "Standard Terms"); Purchasers of this part are entitled to the rights and benefits contained therein. For a full statement of the standard terms and the exclusive rights and remedies thereunder, please visit Mini-Circuits' website at www.minicircuits.com/terms/viewterm.html

Mouser Electronics

Authorized Distributor

Click to View Pricing, Inventory, Delivery & Lifecycle Information:

[Mini-Circuits:](#)

[BFCN-5540+](#)