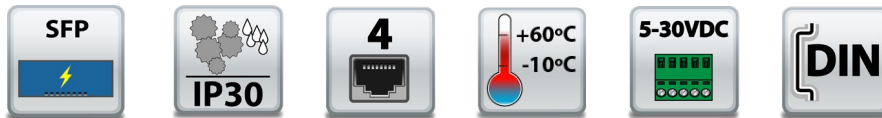


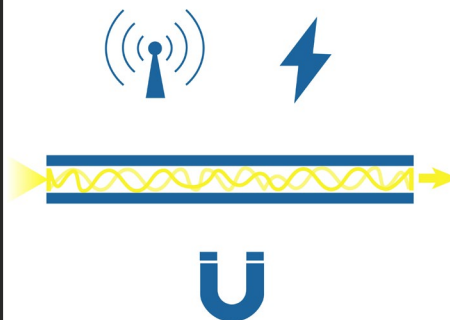
SW-084

1 SFP & 4 PORT GIGABIT ETHERNET SWITCH (SFP module not included)

- Fast, low cost, future-proof way to deploy long network segments
- Connect to wide variety of fibre optic and copper cable types
- High speed data connection over extended distances
- Reduce susceptibility to electromagnetic interference
- Temperature range: -10°C to +60°C/-14°F to +140°F - works in extreme conditions
- Jumbo Frame support up to 9K frames
- Integral wall mount or optional DIN rail mount
- SFP Port Power Overcurrent protection



Long link lengths: expand Ethernet network beyond 100m and completely eliminate Ground loops



Fibre cables are immune to any electrical/magnetic interference, and require no cumbersome isolation devices to guard against high EMI/RFI or lightning strikes



Integral DIN mount and slim design takes up minimal cabinet space

SW-084
1 SFP & 4 PORT GIGABIT ETHERNET SWITCH

Jumbo Frame support up to 9k frames

All Ethernet ports are Auto MDI/MDIX supporting straight through or crossover Ethernet cables

Integral wall mount with optional DIN rail mount

Automatic detection of data transmission speed: 10 or 100 or 1000 Mbps

SFP Power Current Overprotection



-10°C to +60°C/-14°F to +140°F temperature range

IP30 Non-conducting polyamide

Compact case - all round small profile

Power consumption is optimised based on the status of the link device

Power input: +5VDC to +30VDC

Easy Wire Removable screw terminal block

Connectors

| | |
|-----------------|---|
| Screw Terminals | 3 way x 0.2inch/5.08mm pitch power supply |
| Wire Thickness | 0.150 inch, 3.81mm, 20 pins, 12+8 screw terminals, #26 - #16 AWG, 0.14mm ² -1.3mm ² |

Power Supply

| | |
|--------------------|---|
| Power Consumption | 4.2 W |
| Power Supply input | Unregulated +5V to +30Volts DC, reverse polarity protection |
| Isolation | 1500VRMS Magnetic Isolation from Twisted Pair Ethernet |

Environmental

| | |
|---------------------------|--------------------------------|
| Operating Temperature | -10°C to +60°C/-14°F to +140°F |
| Storage Temperature | -10°C to +70°C/-14°F to +158°F |
| Ambient Relative Humidity | 5 to 95% (non-condensing) |

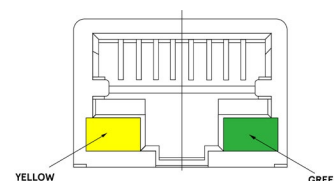
SFP/POWER LED:

Power on: Green
 SFP plugged in: Amber
 SFP activity: Amber Flashing
 SFP Error/Incompatible: Green/Amber Flashing

Magjack LEDs:

Connection established
 Data communication

Speed
 1000Mbps
 100Mbps



Ethernet

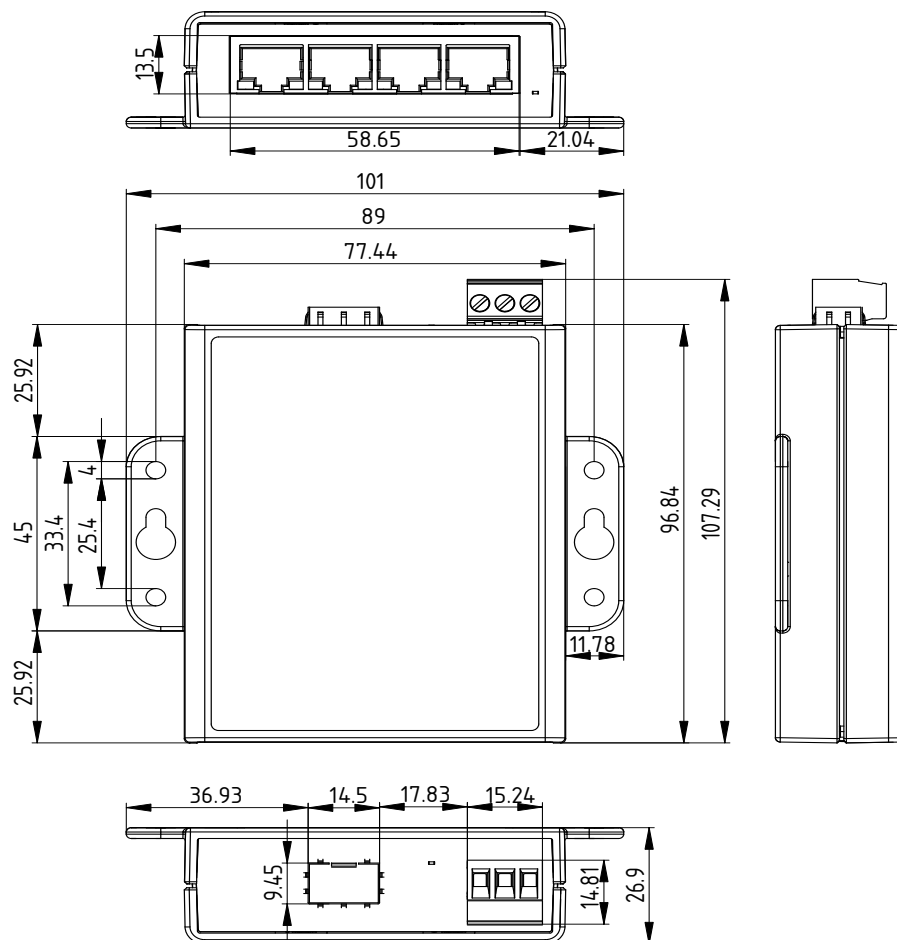
| | |
|---------------|---|
| Ethernet Port | 4 x RJ45 jack, 10/100/1000Mbps autosensing, crossover auto sensing (Auto MDIX) 1 x SFP 1000BASE-X Port |
|---------------|---|

| | |
|------------|--|
| Protection | 1,500 Volts magnetic isolation between ports |
|------------|--|

| | |
|---------|-----------------------------------|
| Housing | IP30 Non-conducting polyamid case |
|---------|-----------------------------------|

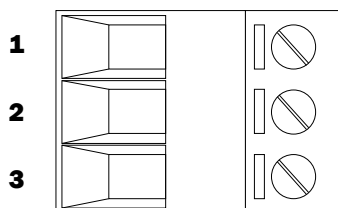
SW-084

1 SFP & 4 PORT GIGABIT ETHERNET SWITCH



Power Terminal Pin Outs

| PIN | FUNCTION |
|-----|------------------|
| 1 | +V Power |
| 2 | -V Power |
| 3 | Functional Earth |



Ethernet Ports x5 Pin Outs

| PIN | FUNCTION |
|-----|----------|
| 1 | TxRxA+ |
| 2 | TxRxA- |
| 3 | TxRxB+ |
| 4 | TxRxC+ |
| 5 | TxRxC- |
| 6 | TxRxB- |
| 7 | TxRxD+ |
| 8 | TxRxD- |

Lifetime Warranty and Support:

We can help with every aspect of your project, from getting you up and running to custom application.

SW-084

1 SFP & 4 PORT GIGABIT ETHERNET SWITCH

Packaging Information

| | |
|---------------------|-----------------------------------|
| Packaging | Quick Start Guide |
| Device | Ethernet Switch 5 port |
| Packaged Weight | 0.353 Kg, 12.45 Ounces |
| Packaged Dims | 160x135x49 mm, 6.3x5.3x1.9 inches |
| GTIN Universal Code | 837324005028 |

Approvals

| | |
|--------------------|--|
| Industry Approvals | Microsoft Certified Gold Partner, WEEE, RoHS, AEO (C-TPAT), CE, UKCA, METL Complies with UL62368-1 |
|--------------------|--|

Product Support

| | |
|----------|---|
| Warranty | Lifetime - online registration required |
| Support | Lifetime web, email and phone support from fully qualified, friendly staff who work in and alongside the Product Development team |

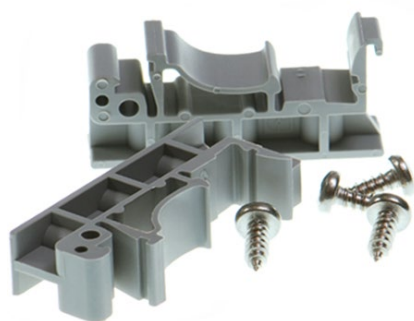
Additional Information

| | |
|--------------|---|
| OEM option | Available for bulk buy OEM |
| Made In | Manufactured in Great Britain (GB) by Brainboxes - Winner 2005 European Electronics Industry Awards 'Manufacturer of the Year' |
| Customisable | Brainboxes operate a 'Perfect Fit Custom Design' policy for volume users. More info: sales@brainboxes.com |



PW-600

Power supply with connectors for UK, USA, EU and AUS mains socket. 'Tails' are suitable for connecting to screw terminal blocks.



MK-048

DIN Rail Mounting Kit Suitable for attaching to SW-084 to make device clip onto a DIN rail.



SW Range

Switch products available in a range of formats and specifications.

www.brainboxes.com

Mouser Electronics

Authorized Distributor

Click to View Pricing, Inventory, Delivery & Lifecycle Information:

[Brainboxes:](#)

[SW-084](#)