

# EVK-M8QSAM

## Evaluation Kit

### User Guide



#### Abstract

This document describes the structure and use of the EVK-M8QSAM evaluation kit and provides information for evaluating and testing the u-blox SAM-M8Q GNSS patch antenna module.

[www.u-blox.com](http://www.u-blox.com)

UBX-16018104 - R06

## Document Information

<b>Title</b>	<b>EVK-M8QSAM</b>	
<b>Subtitle</b>	Evaluation Kit	
<b>Document type</b>	User Guide	
<b>Document number</b>	UBX-16018104	
<b>Revision and Date</b>	R06	30-Nov-2017
<b>Document status</b>	Early Production Information	

## Document status explanation

Objective Specification	Document contains target values. Revised and supplementary data will be published later.
Advance Information	Document contains data based on early testing. Revised and supplementary data will be published later.
Early Production Information	Document contains data from product verification. Revised and supplementary data may be published later.
Production Information	Document contains the final product specification.

## European Union regulatory compliance

EVK-M8QSAM complies with all relevant requirements for RED 2014/53/EU. The EVK-M8QSAM Declaration of Conformity (DoC) is available at [www.u-blox.com](http://www.u-blox.com) (Support --> Product Resources --> Conformity Declaration).

## This document applies to the following products:

Product name	Type number	Firmware version	PCN reference
EVK-M8QSAM	EVK-M8QSAM-0-00	ROM SPG 3.01	N/A

u-blox reserves all rights to this document and the information contained herein. Products, names, logos and designs described herein may in whole or in part be subject to intellectual property rights. Reproduction, use, modification or disclosure to third parties of this document or any part thereof without the express permission of u-blox is strictly prohibited.

The information contained herein is provided "as is" and u-blox assumes no liability for the use of the information. No warranty, either express or implied, is given, including but not limited, with respect to the accuracy, correctness, reliability and fitness for a particular purpose of the information. This document may be revised by u-blox at any time. For most recent documents, visit [www.u-blox.com](http://www.u-blox.com).

Copyright © 2017, u-blox AG.

u-blox is a registered trademark of u-blox Holding AG in the EU and other countries.

# Preface

## Using this guide

This guide assumes, the user has basic computer skills and is familiar with the Windows Graphical User Interface (GUI) and GNSS receiver environments.

The following symbols are used in the document to highlight information:



**A warning symbol indicates actions that could negatively impact or damage the device.**



An index finger points out key information pertaining to device operation and performance.

## Warnings and certifications



EVK-M8QSAM is an Electrostatic Sensitive Device (ESD).



**CAUTION! RISK OF SHORT CIRCUIT OF THE BATTERY WHEN TOUCHING IT WITH CONDUCTING PARTS. IN THE UNLIKELY EVENT OF A FAILURE IN THE INTERNAL PROTECTION CIRCUITRY THERE IS A RISK OF AN EXPLOSION WHEN CHARGING FULLY OR PARTIALLY DISCHARGED BATTERIES. REPLACE THE BATTERY IF IT NO LONGER HAS SUFFICIENT CHARGE FOR UNIT OPERATION. CONTROL THE BATTERY BEFORE USING IF THE DEVICE HAS NOT BEEN OPERATED FOR AN EXTENDED PERIOD OF TIME.**



Products marked with this lead-free symbol on the product label comply with the "Directive 2002/95/EC and Directive 2011/65/EU of the European Parliament and the Council on the Restriction of Use of certain Hazardous Substances in Electrical and Electronic Equipment" (RoHS).

EVK-M8QSAM evaluation kit is RoHS compliant and green (no halogens).

# Contents

<b>Preface .....</b>	<b>3</b>
Using this guide.....	3
Warnings and certifications .....	3
<b>Contents.....</b>	<b>4</b>
<b>1 Product description .....</b>	<b>6</b>
1.1 Overview .....	6
1.2 Kit includes.....	6
1.3 Software and documentation .....	6
1.4 u-center GNSS evaluation software.....	6
1.5 System requirements .....	6
<b>2 Specifications.....</b>	<b>7</b>
2.1 Safety precautions .....	7
<b>3 Getting Started.....</b>	<b>8</b>
3.1 Software installation .....	8
3.2 Hardware installation.....	8
3.3 Serial port default configuration .....	8
<b>4 Device description .....</b>	<b>9</b>
4.1 Interface connection and measurement.....	9
4.2 Active antenna .....	9
4.3 Evaluation unit.....	9
4.3.1 Antenna connector .....	10
4.3.2 USB.....	10
4.3.3 UART.....	10
4.3.4 Time pulse.....	10
4.3.5 RST button .....	11
4.3.6 Safe boot button.....	11
4.3.7 Slide Switch.....	11
4.3.8 Test Connector.....	11
4.3.9 LED .....	12
4.3.10 Backup Battery .....	12
4.3.11 GNSS Configuration .....	12
4.3.12 AssistNow™ Autonomous.....	12
<b>5 Measuring tracking current .....</b>	<b>13</b>
<b>6 Testing Power Save Mode .....</b>	<b>14</b>
<b>7 Block diagram.....</b>	<b>15</b>

<b>8</b>	<b>Board layout .....</b>	<b>16</b>
<b>9</b>	<b>Schematic.....</b>	<b>18</b>
<b>10</b>	<b>Troubleshooting .....</b>	<b>19</b>
<b>11</b>	<b>Common evaluation pitfalls .....</b>	<b>21</b>
	<b>Related documents.....</b>	<b>22</b>
	<b>Revision history .....</b>	<b>22</b>
	<b>Contact.....</b>	<b>23</b>

# 1 Product description

## 1.1 Overview

The EVK-M8QSAM evaluation kit simplifies the evaluation of SAM-M8Q, the u-blox high performance concurrent GNSS patch antenna module. The built-in USB interface provides both power supply and high-speed data transfer, and eliminates the need for an external power supply. The u-blox evaluation kits are compact, and their user friendly interface and power supply make them ideally suited for use in laboratories, vehicles and outdoor locations. Furthermore, they can be used with a PDA or a notebook PC, making them the perfect companion through all stages of design-in projects.

Evaluation Kit	Suitable for
EVK-M8QSAM: u-blox M8 concurrent GNSS patch antenna Evaluation Kit with TCXO, SAW, LNA	SAM-M8Q

**Table 1: List of available evaluation kits**

## 1.2 Kit includes

- Evaluation unit (plain PCB board)
- USB cable
- Quick Start card



Because of the integrated antennas in the SAM-M8Q module, the standard u-blox GNSS EVK aluminum box cannot be used for the EVK-M8QSAM.



A plastic cap is attached on the top of the antenna module in EVK-M8QSAM. The purpose of the cap is to prevent air flow inside the SAM-M8Q shield.

## 1.3 Software and documentation

The EVK-M8QSAM installation software (and documentation) package can be downloaded from the Web; see the Quick Start card for the URL.

## 1.4 u-center GNSS evaluation software

The installation software includes u-center, which is an interactive tool for configuration, testing, visualization and data analysis of GNSS receivers. It provides useful assistance during all phases of a system integration project.

## 1.5 System requirements

- PC with USB interface
- Operating system: Windows Vista onwards (x86 and x64 versions)
- USB drivers are provided in the evaluation kit installation software

## 2 Specifications

Parameter	Specification
Serial Interfaces	1 USB V2.0
	1 RS232, max. baud rate 460,8 kBd - DB9: PC compatible
	1 DDC (I <sup>2</sup> C compatible) max. 400 kHz
Timing Interfaces	1 Time pulse output
Dimensions	100 x 60 x 26 mm
Power Supply	5 V via USB or external powered via extra power supply pin 14 (V5_IN) 13 (GND)
Normal Operating temperature	-40°C to +65°C

Table 2: EVK-M8QSAM specification

### 2.1 Safety precautions

EVK-M8QSAM must be supplied by an external limited power source in compliance with the clause 2.5 of the standard IEC 60950-1. In addition to external limited power source, only separated or Safety Extra-Low Voltage (SELV) circuits are to be connected to the evaluation kit, including interfaces and antennas.



For more information about SELV circuits see section 2.2 in Safety standard IEC 60950-1 [5]

## 3 Getting Started

### 3.1 Software installation



Installation of the EVK-M8QSAM software and documentation requires Internet access.

Choose the “Software only” or “Software and documentation” installation package from the u-blox website. Once the zip file is downloaded, unzip the file in the Tools folder and double-click the extracted exe file.

The software components will be installed on your system and placed under the “u-blox” folder in the “Start → Programs” menu.

### 3.2 Hardware installation

1. Connect the unit to a PC running Microsoft Windows. Options:
  - USB: Connect via USB port. Set slide switch to USB.
  - UART: Connect via RS232. Set slide switch to RS232.
2. The device must always have power, either via USB on the back or the V5\_IN input on the front.
3. The EVK-M8QSAM evaluation kit includes a SAM-M8Q concurrent GNSS module with embedded patch antenna. There is no external antenna connectivity to RF IN. Place the evaluation kit in a location with good sky view.
4. Start the u-center GNSS Evaluation Software and select the corresponding COM port and baud rate. (Refer to the u-center User Guide [4] for more information.)

### 3.3 Serial port default configuration

Parameter	Description	Remark
UART Port 1, Input	UBX and NMEA protocol at 9600 Bd	
UART Port 1, Output	UBX and NMEA protocol at 9600 Bd	Only NMEA messages are activated
USB, Input	UBX and NMEA protocol	
USB, Output	UBX and NMEA protocol	Only NMEA messages are activated

**Table 3: Default configuration**



## 4 Device description

### 4.1 Interface connection and measurement

For connecting the EVK to a PC, use a standard SUBD-9 cable and the included USB cable. Additional measurement equipment can be connected to the front connector.

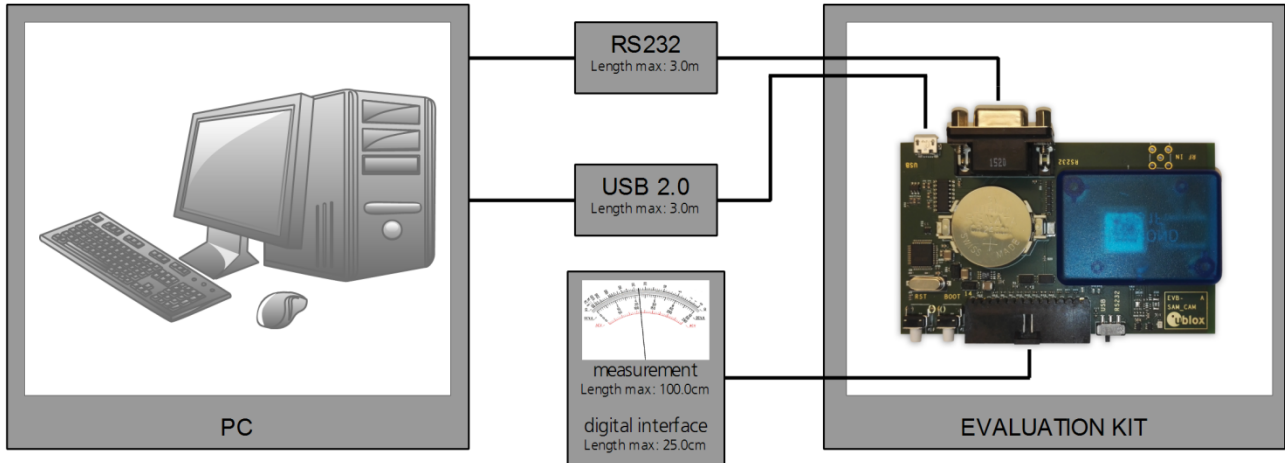


Figure 1: Connecting the unit for power supply and communication

### 4.2 Active antenna

The SAM-M8Q module is embedded with a GNSS patch antenna and the signal is further filtered and amplified by the internal SAW filter and internal Low Noise Amplifier (LNA). For more information, see the SAM-M8Q Hardware Integration Manual [2].



External antenna connectivity through SMA connector is not available in the EVK-M8QSAM.

### 4.3 Evaluation unit

Figure 2 shows the top view with front and the rear sides of the EVK-M8QSAM evaluation unit.

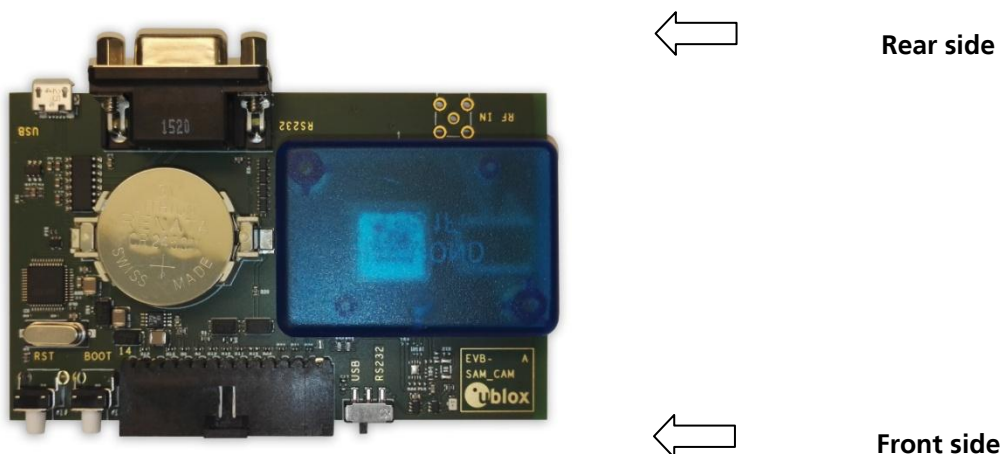


Figure 2: EVK-M8QSAM evaluation unit – front and rear sides

### 4.3.1 Antenna connector



No antenna connector is provided for the EVK-M8QSAM evaluation kit.

### 4.3.2 USB

A USB V2.0 compatible serial port is featured for data communication and power supply.

### 4.3.3 UART

The evaluation unit includes an RS232 port for serial communication that is compatible with PC serial ports. In addition to the RS232 communication port, the time pulse 1 signal is available on the DB9 connector (Pin 1 or 6). Connect using a straight RS232 serial cable with male and female connectors to the port on your PC. The maximum cable length is 3 meters. To configure the RS232 port, use the CFG\_PRT command in the u-center application. The maximum operating baud rate is 460.8 kBd.

If you are using a USB to RS232 adaptor cable, you can connect it directly to the evaluation kit RS232 port.

The 9-pin D-SUB female connector is assigned as listed in Table 4:

Pin Nr.	Assignment
1	GNSS time pulse output
2	TXD, GNSS Transmit Data, serial data to DTE
3	RXD, GNSS Receive Data, serial data from DTE
4	not connected
5	GND
6	GNSS time pulse output
7-9	not connected

**Table 4: SUB-D9 Connector pin description for EVK-M8QSAM**

### 4.3.4 Time pulse

u-blox receivers include a time pulse function providing clock pulses with a configurable pulse period, pulse length and polarity (rising or falling edge). Check the product data sheet for detailed specification of configurable values.

On EVK-M8QSAM kits produced in June 2017 or later (see Figure 3), the "TIMEPULSE" signal is available on the test connector, see section 4.3.8.



**Year produced (e.g. 17 = 2017)**  
**Month (e.g. 01 = January)**

**Figure 3: EVK-M8QSAM Label**

### 4.3.5 RST button

The RST button on the front side resets the unit. To avoid an inadvertent reset, the button is recessed.

### 4.3.6 Safe boot button

This is used to set the unit in safe boot mode. In this mode the receiver executes only the minimal functionality. In order to set the receiver in safe boot mode please follow these steps.

1. Press the BOOT button and keep holding
2. Press the RST button
3. Release the RST button
4. Release the BOOT button
5. If the UART interface has to be used, the training sequence has to be sent to the receiver. The training sequence is a transmission of 0x55 55 at the baud rate of 9600 Bd. Wait for at least 100 milliseconds before the interface is ready to accept commands.

### 4.3.7 Slide Switch

Use the slide switch on the front side to choose between RS232 and USB communication ports.

1. RS232 – In this selection the EVK operates with the RS232 (DB9 – rear side).
2. USB – In this selection the EVK operates only with the USB interface. RS232 (DB9) is switched off.

### 4.3.8 Test Connector

This 14-pin test-connector provides additional functionality to the EVK, allowing access to the interface pins and an ability to measure the current used by the EVK. All pins are ESD protected.

For accurate measurements, it is recommended to use a cable of at most 1 meter in length. Figure 4 shows an example of a power supply connected to the test connector by using standard adapter cables from the manufacture Hirschmann. Figure 5 shows an example for overall current measurement.

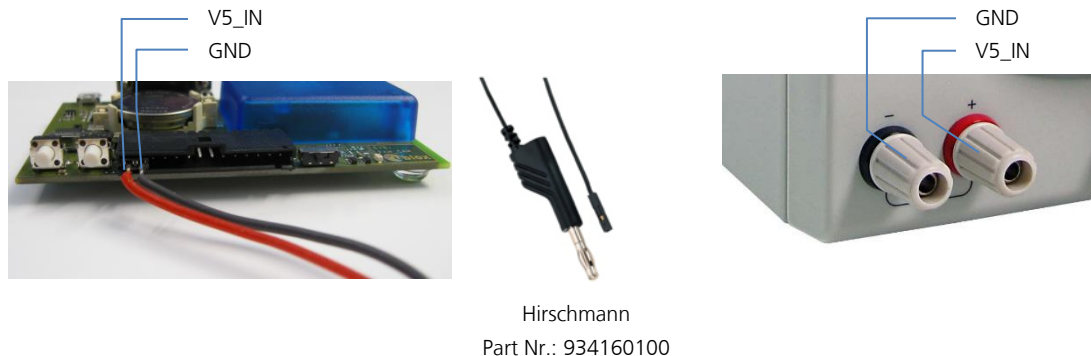


Figure 4: Example 5V DC power supply

PIN Nr.	PIN NAME	I/O	LEVEL	DESCRIPTION
14	V5_IN	I	4.75 V – 5.25 V	Power input – can be used instead of USB
13	GND	I	-	Common ground pin
12	P1A (VCC)	O	3.3 V	Power output – max. current supply 100 mA 1Ω 5% resistor for over-all current measurement to pin 11 (P1B)
11	P1B	O		Second connection for over-all current measurement (see Figure 6)
10	P2A	O	3.0 V	Battery output (unloaded) 100 Ω 5% resistor for battery backup current measurement to pin 9 (P2B) NOTE: There is a current protection to 3 mA. See circuit in Figure 8 (D2, D4, R29)
9	P2B	O		Second junction for battery backup current measurement

8	TIMEPULSE1	O	3.3 V	Time pulse 1 <sup>1</sup>
7	EXTIN0	I	3.3 V	External interrupt input
6	NC	-	-	Not Connected
5	SDA2	I/O	3.3 V	DDC Data
4	SCL2	I/O	3.3 V	DDC Clock
3	TXD1	O	3.3 V	Serial Port
2	RXD1	I	3.3 V	Serial Port
1	GND	I	-	Common ground pin

**Table 5: Connector pin description for EVK-M8QSAM**

### 4.3.9 LED

On the mother board of the unit, a single blue LED shows the time pulse 1 signal. The LED starts flashing one pulse per second during a GNSS fix. If there is no GNSS fit, the LED will only light, without flashing.

### 4.3.10 Backup Battery

There is a backup battery in the evaluation unit. This is necessary to store orbital information between operations and to enable faster start-up. It is a RENATA 3.0 V Li / MnO<sup>2</sup> battery of the type CR2450. The battery has a rated capacity of 540 mA. The battery operating temperature range is -40° C to +85° C.

In case the built-in backup battery runs low or empty after a long storage period, purchase the above described battery for replacement.

 **CAUTION! RISK OF EXPLOSION IF BATTERY IS REPLACED BY AN INCORRECT TYPE. DISPOSE OF USED BATTERIES ACCORDING TO THE INSTRUCTIONS!**

 **RISK OF SHORT CIRCUIT WHEN TOUCHING THE BATTERY WITH CONDUCTING PARTS!**

### 4.3.11 GNSS Configuration


The EVK-M8QSAM supports concurrent GPS, QZSS, GLONASS, and Galileo reception. By default the M8 receivers are configured for concurrent GPS and GLONASS, including SBAS and QZSS reception.

The GNSS to be used can be configured with u-center (View → Messages View then UBX-CFG-GNSS). For more information, refer to the u-center User Guide [4] and u-blox 8 / u-blox M8 Receiver Description including Protocol Specification [3].

### 4.3.12 AssistNow™ Autonomous

AssistNow Autonomous is enabled by default in the EVK-M8QSAM for faster fix in situations where satellite signals are weak. For more information about this A-GNSS feature see the SAM-M8Q Data Sheet [1].

 AssistNow Autonomous is disabled by default in the SAM-M8Q module

 In case of using EVK-M8QSAM with simulator, the AssistNow Autonomous should be disabled by using the UBX-CFG-NAVX5 message. For more information, refer to the u-blox 8 / u-blox M8 Receiver Description including Protocol Specification [3].

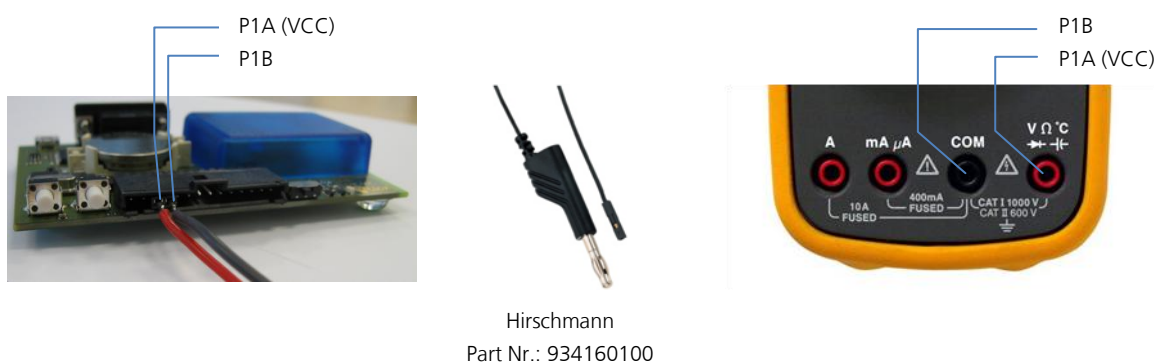
<sup>1</sup> Time pulse not available in all EVK versions. Please refer to section 4.3.4 on how to check availability of TIMEPULSE1 on your EVK.

## 5 Measuring tracking current

To measure the tracking current with EVK-M8QSAM, follow these steps:

1. Connect a true rms voltmeter across P1A (VCC) and P1B of the front connector (see Figure 5).
2. Wait 12 minutes to download all GNSS orbital data, or download all the Aiding Data via the AssistNow Online service
3. Read the voltage (and average if necessary) on the voltmeter and convert to current (1 mV equals 1 mA)
4. Perform the test with good signals and clear sky view to ensure that the receiver can acquire the satellite signals.

For more details see the circuit in Figure 8.



**Figure 5: Example – tracking current measurement**

## 6 Testing Power Save Mode

When testing Power Save Mode with EVK-M8QSAM, observe the following points:

- A set of predefined power mode setups can be selected using the CFG-PMS message. The Configuration view or Messages view of the u-center evaluation software can be used to do this. When enabling the mode using CFG-PMS, always save the configuration by checking the “save configuration” box in u-center otherwise the configuration will be lost.
- Selecting one of the available setups is the equivalent of using a combination of the configuration messages with appropriate parameters that impact the power consumption of the receiver.
- u-blox recommends using these predefined settings, except where users have very specific power saving requirements
- Note that polling UBX-CFG-PMS will return the setup only if the full configuration is consistent with one of the predefined Power Mode Setups
- Communication to the evaluation kit must be via the RS232 or the USB.
- The evaluation kit can be supplied via the USB connector or via V5\_IN at the front side connector.

## 7 Block diagram

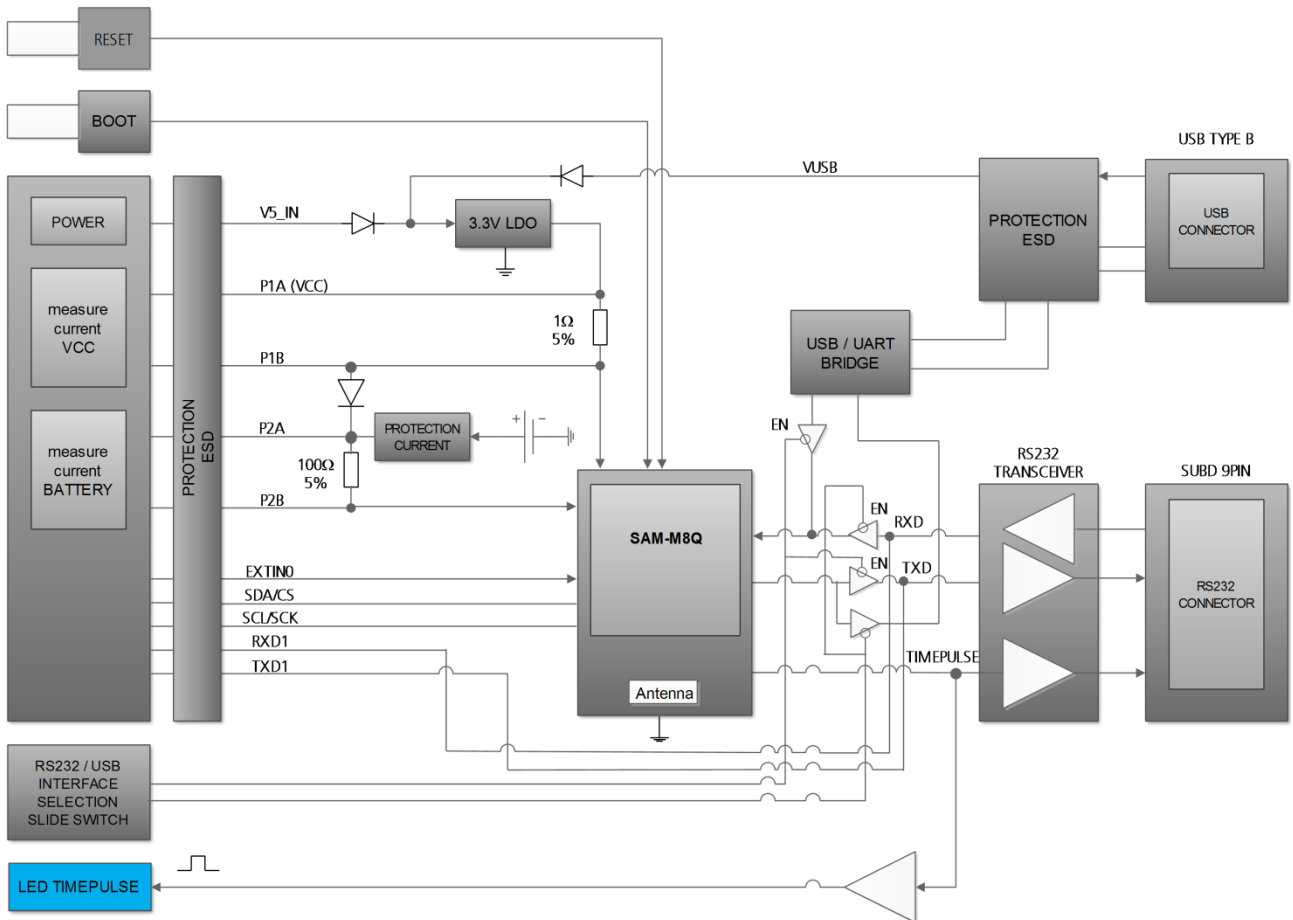


Figure 6: EVK-M8QSAM block diagram

## 8 Board layout

Figure 7 shows the EVK-M8QSAM board layout. See Table 6 for the component list of the EVB.

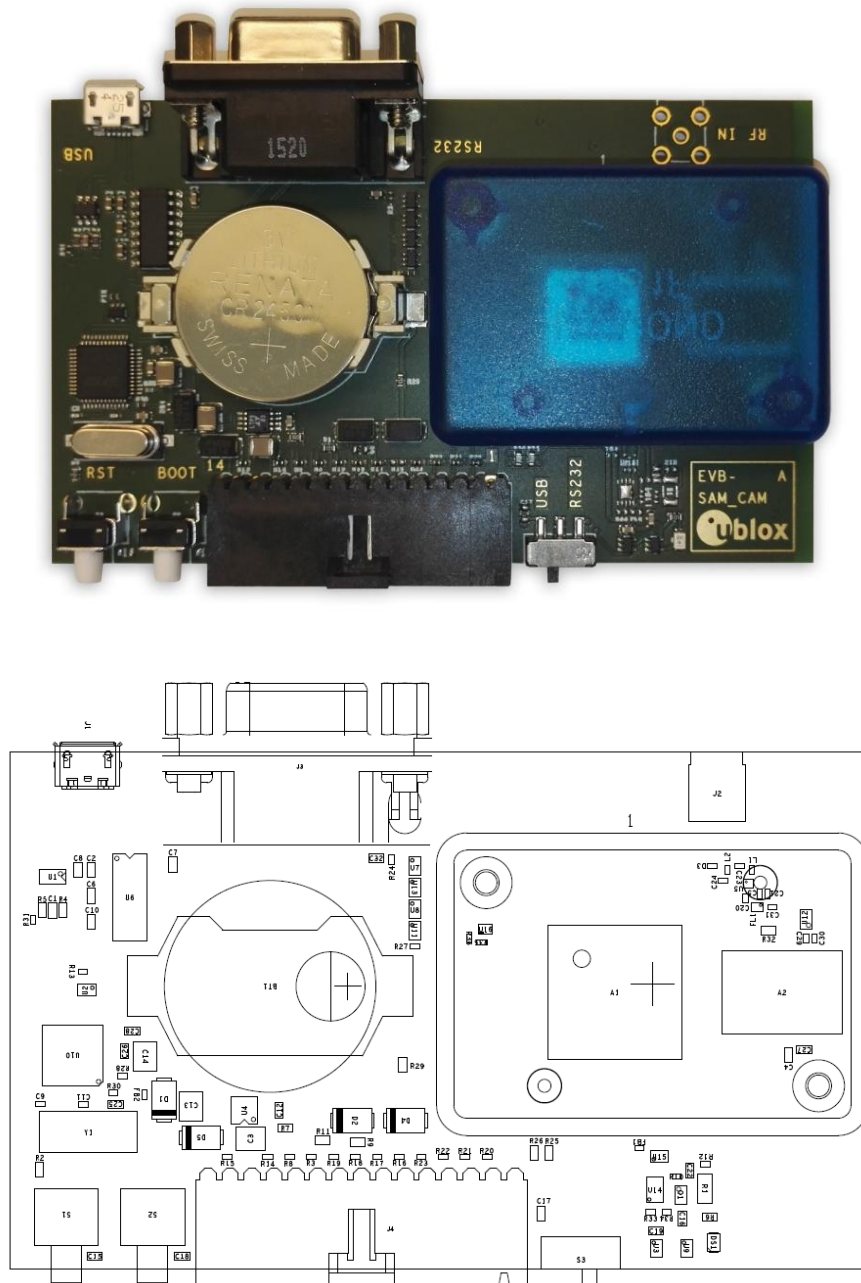


Figure 7: EVB-SAM\_CAM layout



PART	DESCRIPTION
A1	GNSS RECEIVER U-BLOX SAM-M8Q WITH EMBEDDED ANTENNA 3,3V -40/+85C
1	PLASTIC HOUSING 1551FTBU
BT1	BATTERY HOLDER RENATA CR2450N 3 V
C1 C7 C16 C19 C25 C28 C32	CAP CER X7R 0603 100N 10% 10 V
C10 C2 C6 C8 C22	CAP CER X5R 0603 1U0 10% 6.3 V
C12	CAP CER X7R 0603 10N 10% 10 V
C13 C14 C3	CAP CER X5R 1210 10U 10% 10 V
C9 C11	CAP CER COG 0402 27P 5% 25 V
C26	CAP CER X7R 0603 33N 10% 25 V
C27 C4	CAP CER X5R 0603 4U7 10% 6.3 V
D1 D2 D4 D5	SURFACE MOUNT SCHOTTKY BARRIER RECTIFIER SS14 1A -55/+125° C
R17 R18 R20 R21 R22 R23	ESD PROTECTION FOR HIGH SPEED LINES, TYCO, 0.25PF, PESD0402-140 -55/+125° C
DS1	LED OSRAM HYPER MINI TOPLED LB M673-L1N2-35 BLUE 0.02 A
FB2	FERRITE BEAD MURATA BLM15HD 0402 1000R @ 100 MHZ
J1	CON USB RECEPTACLE MICRO B TYPE SMD - MOLEX 47346-0001 - TID60001597 30 V 1 A
J3	9 POLE SUBD CONNECTOR FEMALE
J4	14PIN 90DEGREE 2.54MM PITCH DISCONNECTABLE CRIMP CONNECTOR -40/+85° C
R11 R2 R6	RES THICK FILM CHIP 0603 100R 5% 0.1 W
R13	RES THICK FILM CHIP 0402 10K 5% 0.1 W
R14 R15 R19 R3 R8	VARISTOR BOURNS MLE SERIES CG0402MLE-18G 18 V
R24 R27 R35 R36	RES THICK FILM CHIP 0402 100K 5% 0.1 W
R25 R26	RES THICK FILM CHIP 0603 3K0 5% 0.1 W
R28	RES THICK FILM CHIP 0402 10K 1% 0.063 W
R29	RES THICK FILM CHIP 0603 1K0 5% 0.1 W
R30	RES THICK FILM CHIP 0402 470R 5% 0.1 W
R31	RES THICK FILM CHIP 0402 1K5 5% 0.1 W
R4 R5	RES THICK FILM CHIP 0603 27R 5% 0.1 W
R7	RES THICK FILM CHIP 0603 1R0 5% 0.1 W
R9	RES THICK FILM CHIP 0603 51R0 5% 0.1 W, <b>not populated on old versions</b>
S1 S2	SWITCH SPST ON 1POL TYCO -40/+85° C
S3	2 WAY SUB-MINIATURE SLIDE SWITCH SMD JS SERIES – SPDT -40/+85° C
U1	USB DATA LINE PROTECTION ST USBLC6-2SC6 SOT23-6
U10	DUAL USB TO SERIAL BRIDGE CONTROLLER FT2232D
U11 U13	TINY LOGIC UHS BUFFER OE_N ACTIVE LOW FAIRCHILD NC7SZ125 SC70
U16	TINY LOGIC ULP-A 2-INPUT AND GATE 1.45X1.0 6-LEAD MICROPACK -40/+85° C
U2 U3 U7 U8 U9	TINY LOGIC UHS BUFFER OE_N ACTIVE LOW FAIRCHILD NC7SZ125 SC70
U4	LOW DROPOUT REGULATOR LINEAR LT1962 MS8 3.3V 0.3 A
U6	RS-232 TRANSCEIVER MAXIM MAX3232 SO16 -40/+85° C
Y1	CRYSTAL CL=18PF CITIZEN HCM49 6.0000MHZ 50 PPM

**Table 6: EVB-M8QSAM component list**

The image shows a complex PCB layout for the u-blox EVB-SAM-CAM module. The schematic includes the following components and connections:

- u-blox Module (U10):** The central component, with pins labeled for various functions like VCC, GND, RX, TX, and I2C.
- Camera Module (U2):** Connected to the u-blox module via I2C and power lines.
- USB Connector (J1):** Provides power and data to the module.
- Plastic Cover (U1):** A protective cover for the module.
- Test Connector (J3):** Used for testing the module.
- Passive Components:** Numerous resistors (R1-R28), capacitors (C1-C19), and diodes (D1-D4) are used for signal conditioning and power management.
- Power Regulation:** A 3.3V regulator (U4) and a 5V regulator (U5) are shown, along with various decoupling capacitors.
- Signal Processing:** The camera module (U2) is connected to the u-blox module via I2C and power lines.
- Layout Details:** The PCB is marked with 'u-blox' and 'EVB-SAM-CAM'. The layout includes a plastic cover (U1) and a test connector (J3).

The schematic is a detailed representation of the module's internal components and their connections, providing a clear guide for assembly and testing.

UBX-16018104 - R06

Page 18 of 23

## 10 Troubleshooting

### **My application (e.g. u-center) does not receive anything**

Check whether the blue LED on the evaluation unit is blinking. Also make sure that the USB cable is properly connected to the evaluation unit and the PC. By default, the evaluation unit outputs NMEA protocol on Serial Port 1 at 9600 Bd, or on the USB.

### **My application (e.g. u-center) does not receive all messages**

When using UART, make sure the baud rate is sufficient. If the baud rate is insufficient, GNSS receivers based on u-blox M8 GNSS technology will skip excessive messages. Some serial port cards/adapters (i.e. USB to RS232 converter) frequently generate errors. If a communication error occurs while u-center receives a message, the message will be discarded.

### **My application (e.g. u-center) loses the connection to the GNSS receiver**

u-blox M8 positioning technology and u-center have an autobauding feature. If frequent communication errors occur (e.g. due to problems with the serial port), the connection may be lost. This happens because u-center and the GNSS receiver both autonomously try to adjust the baud rate. Do not enable the u-center autobauding feature if the GNSS receiver has the autobauding flag enabled.

### **The COM port does not send any messages**

Be sure that the slide switch at the front side is set to RS232 and not USB. In USB Mode the RS232 pins on the DB9 connector are switched off.

### **Some COM ports are not shown in the port list of my application (e.g. u-center)**

Only the COM ports that are available on your computer will show up in the COM port drop down list. If a COM Port is gray, another application running on this computer is using it.

### **After installing USB driver for the first time by connecting EVK-M8QSAM to PC with USB cable, the cursor on PC starts to jump around the screen**

The syndrome is caused when the NMEA 0183 GNSS serial data is misinterpreted as a mouse data by the serial port enumerator (serenum.sys), resulting in erratic mouse cursor activity. Change the USB/RS232 switch to RS232 can help to recover the control of the cursor and disable the enumerator setting in the Windows Device Manager / Ports (COM&LPT) / USB Serial Port (COMxx) / Port Settings / Advanced...

### **The position is off by a few dozen meters**

u-blox M8 GNSS technology starts up with the WGS84 standard GNSS datum. If your application expects a different datum, you'll most likely find the positions to be off by a few dozen meters. Don't forget to check the calibration of u-center map files.

### **The position is off by hundreds of meters**

Position drift may also occur when almanac navigation is enabled. The satellite orbit information retrieved from an almanac is much less accurate than the information retrieved from the ephemeris. With an almanac only solution, the position will only have an accuracy of a few kilometers but it may start up faster or still navigate in areas with obscured visibility when the ephemeris from one or several satellites have not yet been received. The almanac information is NOT used for calculating a position, if valid ephemeris information is present, regardless of the setting of this flag.

In NMEA protocol, position solutions with high deviation (e.g. due to enabling almanac navigation) can be filtered with the Position Accuracy Mask. UBX protocol does not directly support this since it provides a position accuracy estimation, which allows the user to filter the position according to his requirements. However, the "Position within Limits" flag of the UBX-NAV-STATUS message indicates whether the configured thresholds (i.e. P Accuracy Mask and PDOP) are exceeded.

### **TTFB times at startup are much longer than specified**

At startup (after the first position fix), the GNSS receiver performs an RTC calibration to have an accurate internal time source. A calibrated RTC is required to achieve minimal startup time.

Before shutting down the receiver externally, check the status in MON-HW in field "Real Time Clock Status". Do not shut down the receiver if the RTC is not calibrated.

### The EVK-M8QSAM does not meet the TTFF specification

Make sure the antenna has a good sky view. An obstructed view leads to prolonged startup times. In a well-designed system, the average of the C/No ratio of high elevation satellites should be in the range of 40 dBHz to about 50 dBHz. With a standard off-the-shelf active antenna, 47 dBHz should easily be achieved. Low C/No values lead to a prolonged startup time.

### The EVK-M8QSAM does not work properly when connected with a GNSS simulator

There is no RF-input for simulator signal. Instead the signal can be re-radiated to the module by connecting the simulator to a passive GNSS antenna, which is placed above the module. Simulator signal level shall be increased accordingly to recover the path loss between antennas.

When using an EVK together with a GNSS simulator, pay attention to proper handling of the EVK. A GNSS receiver is designed for real-life use, i.e. time is always moving forward. By using a GNSS simulator, the user can change scenarios, which enables jumping backwards in time. This can have serious side effects on the performance of GNSS receivers.

The solution is to configure GPS week rollover to 1200 (as indicated in Figure 9), which corresponds to Jan 2003. Then, issue the cold start command before every simulator test to avoid receiver confusion due to the time jumps.

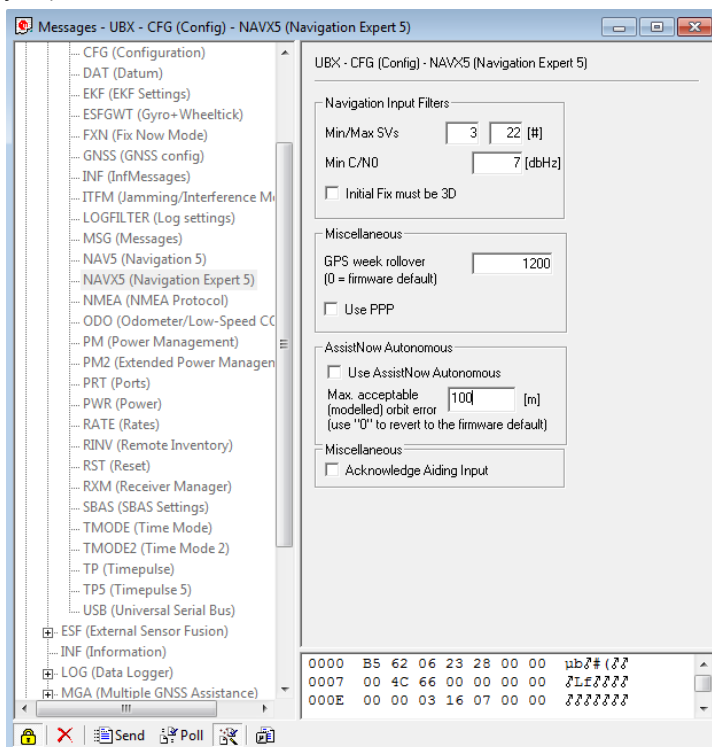


Figure 9: Configuration instruction for using the EVK with a GNSS simulator

### The EVK-M8QSAM does not preserve the configuration when power is cut off

u-blox M8 GNSS technology uses a slightly different concept than most other GNSS receivers do. Settings are initially stored to volatile memory. In order to save them permanently, sending a second command is required. This allows testing the new settings and reverting to the old settings by resetting the receiver if the new settings aren't good. This provides safety, as it is no longer possible to accidentally program a bad configuration (e.g. disabling the main communication port).

### EVK-M8QSAM receives GPS, GLONASS and Galileo

Use u-center version 8.20 or newer. Message UBX-CFG-GNSS allows switching on and off the supported GNSS.

## 11 Common evaluation pitfalls

- A parameter may have the same name but a different definition. GNSS receivers may have a similar size, price and power consumption but can still have different functionalities (e.g. no support for passive antennas, different temperature range). Also, the definitions of hot, warm, cold start times may differ between suppliers.
- Verify design-critical parameters; do not base a decision on unconfirmed numbers from datasheets.
- Try to use identical or at least similar settings when comparing the GNSS performance of different receivers.
- Data that has not been recorded at the same time and the same place should not be compared. The satellite constellation, the number of visible satellites, and the sky view might have been different.
- Do not compare momentary measurements. GNSS is a non-deterministic system. The satellite constellation changes constantly. Atmospheric effects (i.e. dawn and dusk) have an impact on signal travel time. The position of the GNSS receiver is typically not the same between two tests. Comparative tests should therefore be conducted in parallel by using one antenna and a signal splitter; statistical tests shall be run for 24 hours.
- Monitor the Carrier-To-Noise-Ratio. The average C/No ratio of the high elevation satellites should be between 40 dBHz and about 50 dBHz. A low C/No ratio will result in a prolonged TTFF and more position drift.
- When comparing receivers side by side, make sure that all receivers have the same signal levels. The best way to achieve this is by using a signal splitter. Comparing results measured with different antenna types (with different sensitivity) will lead to incorrect conclusions.
- Try to feed the same signal to all receivers in parallel (i.e. through a splitter); the receivers won't have the same sky view otherwise. Even small differences can have an impact on the accuracy. One additional satellite can lead to a lower DOP and less position drift.

## Related documents

- [1] SAM-M8Q Data Sheet, Docu. No. UBX-16012619
- [2] SAM-M8Q Hardware Integration Manual, Docu. No. UBX-16018358
- [3] u-blox 8 / u-blox M8 Receiver Description including Protocol Specification, Docu. No. UBX-13003221 (Public Release)
- [4] u-center – User Guide, Docu. No. UBX-13005250
- [5] Information technology equipment – Safety Standard IEC 60950-1  
<https://webstore.iec.ch/publication/4024>



For regular updates to u-blox documentation and to receive product change notifications, register on our homepage.

## Revision history

Revision	Date	Name	Status / Comments
R01	17-Nov-2016	jhak	Initial version
R02	15-Feb-2017	jhak	Advance Information
R03	17-Mar-2017	jhak	Early Production Information
R04	14-Jun-2017	mdur	Added information on time pulse in sections 2, section 4, and section 8. Updated Figure 8. Added section 2.1 (Safety precautions).
R05	27-Sep-2017	msul	Added information on RED DoC in European Union regulatory compliance (page 2), updated legal statement in cover page and added Documentation feedback e-mail address in contacts page.
R06	30-Nov-2017	rmak	Removed extra backup battery from EVK content (section 1.2).

# Contact

For complete contact information visit us at [www.u-blox.com](http://www.u-blox.com)

## u-blox Offices

### North, Central and South America

#### u-blox America, Inc.

Phone: +1 703 483 3180  
E-mail: [info\\_us@u-blox.com](mailto:info_us@u-blox.com)

#### Regional Office West Coast:

Phone: +1 408 573 3640  
E-mail: [info\\_us@u-blox.com](mailto:info_us@u-blox.com)

#### Technical Support:

Phone: +1 703 483 3185  
E-mail: [support\\_us@u-blox.com](mailto:support_us@u-blox.com)

### Headquarters Europe, Middle East, Africa

#### u-blox AG

Phone: +41 44 722 74 44  
E-mail: [info@u-blox.com](mailto:info@u-blox.com)  
Support: [support@u-blox.com](mailto:support@u-blox.com)

#### Documentation Feedback

E-mail: [docsupport@u-blox.com](mailto:docsupport@u-blox.com)

### Asia, Australia, Pacific

#### u-blox Singapore Pte. Ltd.

Phone: +65 6734 3811  
E-mail: [info\\_ap@u-blox.com](mailto:info_ap@u-blox.com)  
Support: [support\\_ap@u-blox.com](mailto:support_ap@u-blox.com)

#### Regional Office Australia:

Phone: +61 2 8448 2016  
E-mail: [info\\_au@u-blox.com](mailto:info_au@u-blox.com)  
Support: [support\\_au@u-blox.com](mailto:support_au@u-blox.com)

#### Regional Office China (Beijing):

Phone: +86 10 68 133 545  
E-mail: [info\\_cn@u-blox.com](mailto:info_cn@u-blox.com)  
Support: [support\\_cn@u-blox.com](mailto:support_cn@u-blox.com)

#### Regional Office China (Chongqing):

Phone: +86 23 6815 1588  
E-mail: [info\\_cn@u-blox.com](mailto:info_cn@u-blox.com)  
Support: [support\\_cn@u-blox.com](mailto:support_cn@u-blox.com)

#### Regional Office China (Shanghai):

Phone: +86 21 6090 4832  
E-mail: [info\\_cn@u-blox.com](mailto:info_cn@u-blox.com)  
Support: [support\\_cn@u-blox.com](mailto:support_cn@u-blox.com)

#### Regional Office China (Shenzhen):

Phone: +86 755 8627 1083  
E-mail: [info\\_cn@u-blox.com](mailto:info_cn@u-blox.com)  
Support: [support\\_cn@u-blox.com](mailto:support_cn@u-blox.com)

#### Regional Office India:

Phone: +91 80 4050 9200  
E-mail: [info\\_in@u-blox.com](mailto:info_in@u-blox.com)  
Support: [support\\_in@u-blox.com](mailto:support_in@u-blox.com)

#### Regional Office Japan (Osaka):

Phone: +81 6 6941 3660  
E-mail: [info\\_jp@u-blox.com](mailto:info_jp@u-blox.com)  
Support: [support\\_jp@u-blox.com](mailto:support_jp@u-blox.com)

#### Regional Office Japan (Tokyo):

Phone: +81 3 5775 3850  
E-mail: [info\\_jp@u-blox.com](mailto:info_jp@u-blox.com)  
Support: [support\\_jp@u-blox.com](mailto:support_jp@u-blox.com)

#### Regional Office Korea:

Phone: +82 2 542 0861  
E-mail: [info\\_kr@u-blox.com](mailto:info_kr@u-blox.com)  
Support: [support\\_kr@u-blox.com](mailto:support_kr@u-blox.com)

#### Regional Office Taiwan:

Phone: +886 2 2657 1090  
E-mail: [info\\_tw@u-blox.com](mailto:info_tw@u-blox.com)  
Support: [support\\_tw@u-blox.com](mailto:support_tw@u-blox.com)

# Mouser Electronics

Authorized Distributor

Click to View Pricing, Inventory, Delivery & Lifecycle Information:

[u-blox:](#)

[EVK-M8QSAM](#)