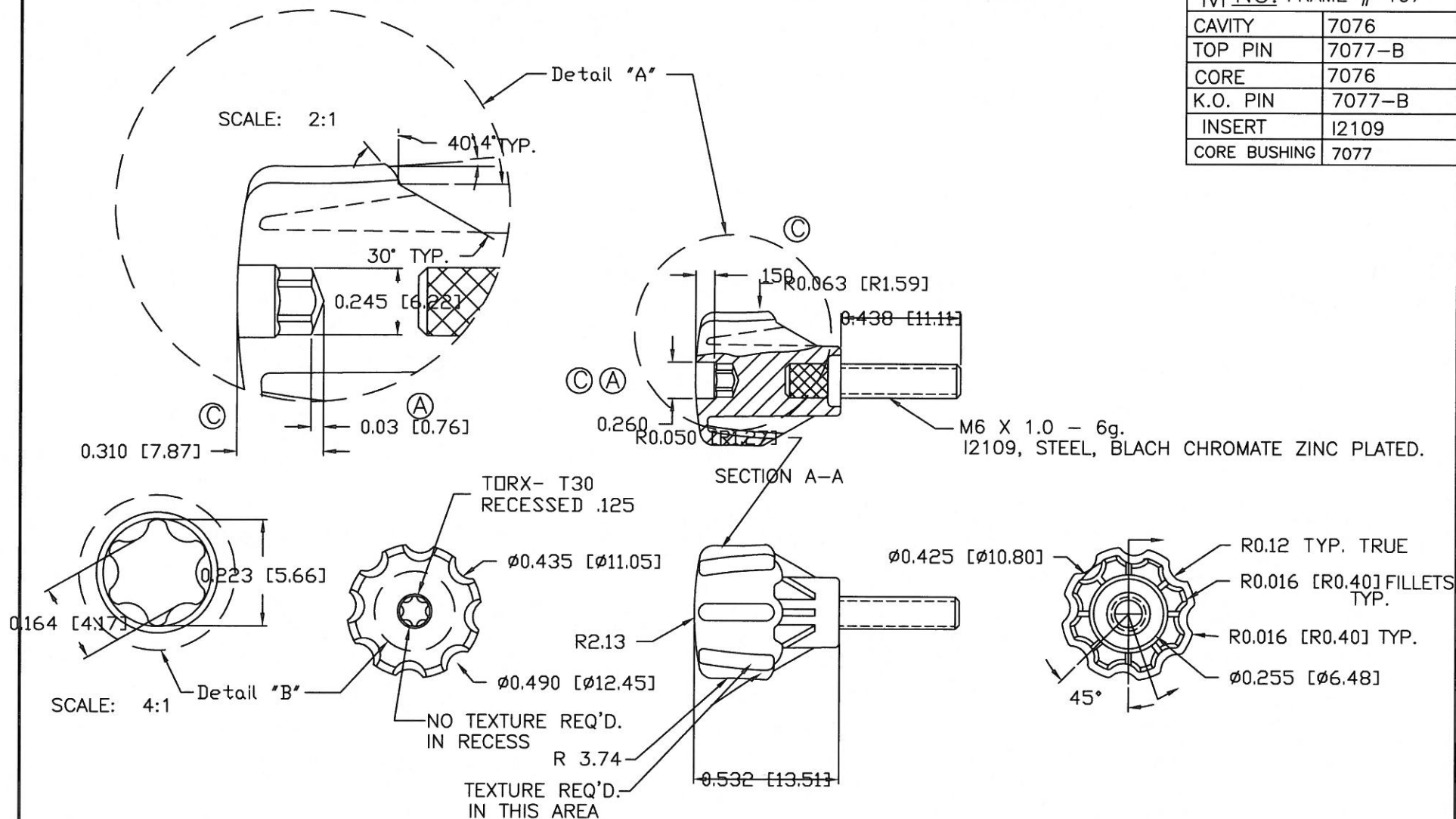


PART NAME: KNOB SCALE: 1:1 DATE: 5/6/98 DR. BY HD
 THIS DRAWING IS THE PROPERTY OF DAVIES MOLDING COMPANY, IS SUBMITTED SOLELY AS A DESIGN OR ENGINEERING PROJECT.
 WE ACCEPT NO RESPONSIBILITY WHATSOEVER FOR THE PRACTICAL APPLICATION OF THE PIECES MADE TO THIS DESIGN.

DAVIES MOLDING COMPANY
 CAROL STREAM, ILLINOIS 60188

P/N 7077-B
 M NO. FRAME # 107
 CAVITY 7076
 TOP PIN 7077-B
 CORE 7076
 K.O. PIN 7077-B
 INSERT I2109
 CORE BUSHING 7077



NOTE:

(1) EXTERNAL SURFACES TO BE PARTIALLY TEXTURED
 TO MATCH MOLDTECH PATTERN NO.# 11000

MATERIAL : NYLON-33% GLASS FILLED.
 COLOR : (MATTE-BLACK)

TOLERANCES: UNLESS OTHERWISE SPECIFIED	DO NOT SCALE DRAWING			
DECIMALS: X.XXX ± .005 X.XX ± .015	MM: X.XX ± 0.15MM X.X ± 0.4MM	C	150 WAS .137 280 WAS .269 .310 WAS .300	MP 12/1/98
		B	Detail "B" added	MH 11/19/98
		A	Changed detail: width was .250 Height was 0.25	MH 11/17/98
		-	Was SK7077-01	JM 7/10/98
FRACTIONS ± 1/64	ANG. ± 1°	CHANGES		

Mouser Electronics

Authorized Distributor

Click to View Pricing, Inventory, Delivery & Lifecycle Information:

[Davies Molding:](#)

[7077-B](#)