

PART NAME: HUSKY KNOB SCALE: 1:1 DATE: 11/23/88 DR. BY HD

THIS DRAWING IS THE PROPERTY OF DAVIES MOLDING COMPANY, IS SUBMITTED SOLELY AS A DESIGN OR ENGINEERING PROJECT. WE ACCEPT NO RESPONSIBILITY WHATSOEVER FOR THE PRACTICAL APPLICATION OF THE PIECES MADE TO THIS DESIGN.



DESIGNERS & MANUFACTURERS
OF KNOBS, HANDLES, CASES &
CUSTOM PLASTIC COMPONENTS

CAD/REDRAWN : 7/28/94 : HD

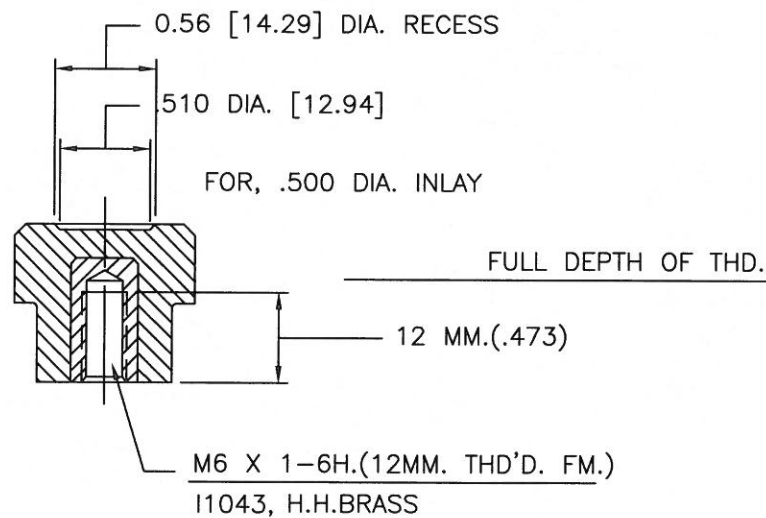
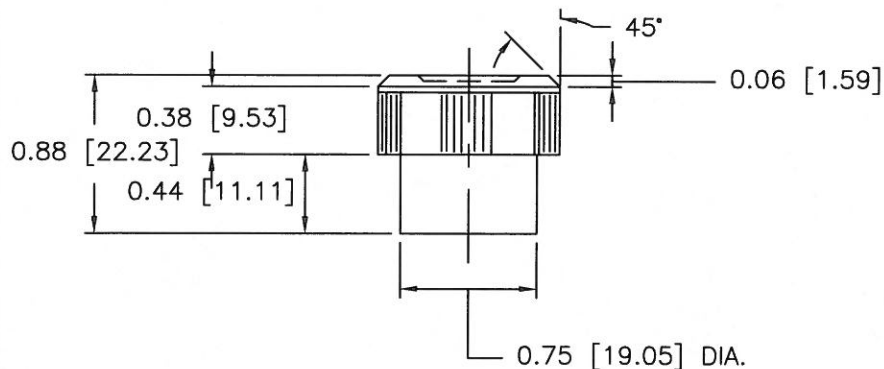
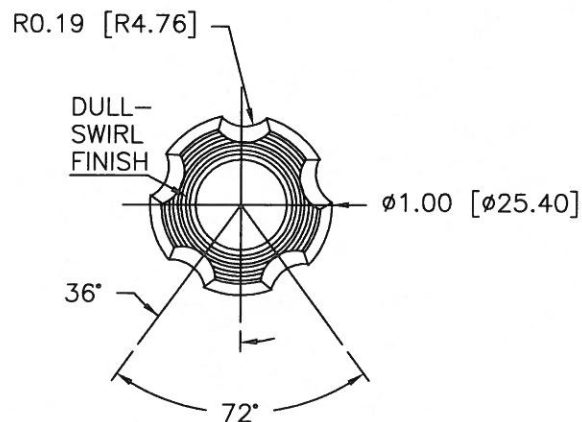
NOTE : FOR ALL # 2850 MOLD SET-UPS
IN # 3025-2 MOLD FRAME BE
SURE SPACER EXTENSIONS ARE
MOUNTED UNDER LEG SUPPORTS.

USE ONLY # 3025-2 MOLD FRAME

P/N 2850-T

M NO. 3025-2

CAV.	2850
PLUNGER	2850
PIN	3000-D
INSERT	11043
LEG SPACER	2850(4)
EXTENSION	1.693 HIGH
PLUNGER KEY	1/4x1/4x9/16
CAVITY KEY	1/4x1/4x9/16



MATERIAL: G.P. PHENOLIC (B11)
COLOR: BLACK

TOLERANCES: UNLESS OTHERWISE SPECIFIED	DO NOT SCALE DRAWING			
DECIMALS: X.XXX ± .005 X.XX ± .015	MM: X.XX ± 0.15MM X.X ± 0.4MM			
FRACTIONS ± 1/64	ANG. ± 1°			
CHANGES				

Mouser Electronics

Authorized Distributor

Click to View Pricing, Inventory, Delivery & Lifecycle Information:

[Davies Molding:](#)

[2850-T](#)