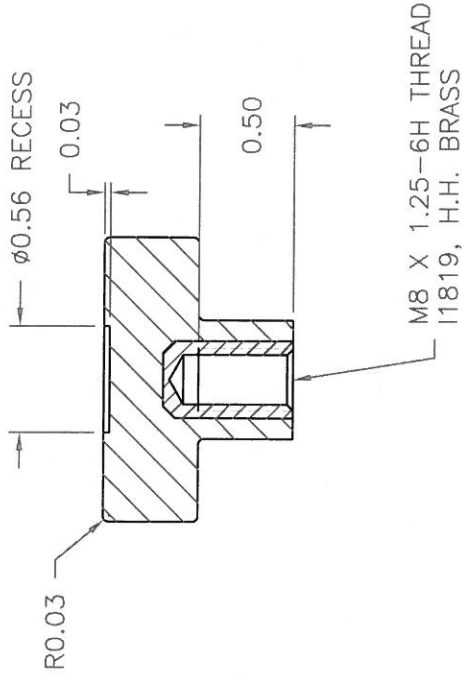
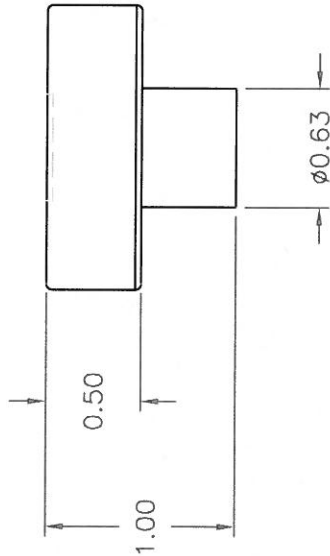
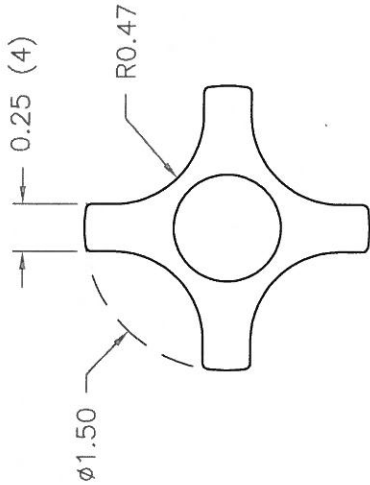


P/N	2820CQ
M ^{NO.}	3035
CAVITY	2820
PLUNGER	2820
PLUNGER PIN	2820
OUTER PIN	3008-29
PIN BAR SHIM	0.093
INSERT	I1819
CAVITY KEY	1/4x1/4x3/4
PLUNGER KEY	1/4x1/4x5/8



MATERIAL: G.P. PHENOLIC (B11)
COLOR: BLACK

TOLERANCES: UNLESS OTHERWISE SPECIFIED	DO NOT SCALE DRAWING		
DECIMALS: X.XXX $\pm .005$ X.XX $\pm .015$	MM: X.XX $\pm 0.15\text{MM}$ X.X $\pm 0.4\text{MM}$		
FRACTIONS $\pm 1/64$	ANG. $\pm 1^\circ$		
CHANGES			

Mouser Electronics

Authorized Distributor

Click to View Pricing, Inventory, Delivery & Lifecycle Information:

[Davies Molding:](#)

[2820CQ](#)