

Handle series FG4-P

Handles with switching function for pneumatic purposes.

Material and surface:

Handle shanks of polyamide PA 6, glass ball reinforced, black, similar to RAL 9005, half-matt with fine structure. Connecting ledge of profiled aluminium AlMgSi 0.5; natural coloured anodized.

Version:

Manually operated push button with 3/2 or 5/2 solenoid valve with return spring for filtered or oiled compressed air.

Compressed air connection:

Straight or angled adaptor, \varnothing 4 mm with o-ring.

Note:

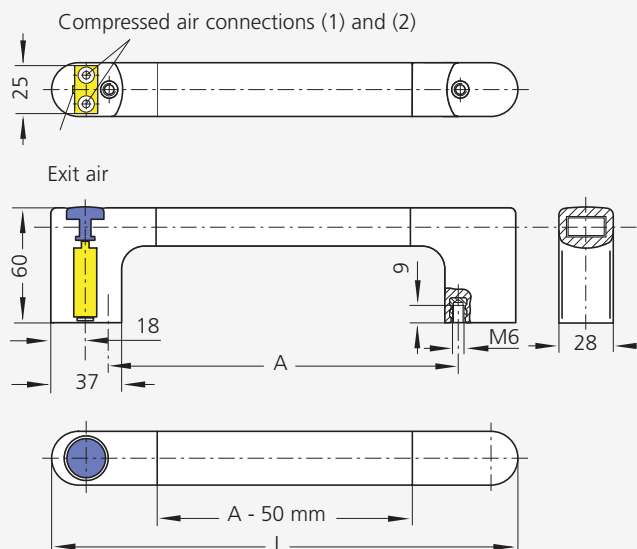
Other handle lengths on request. Handle versions without functions see page 33.



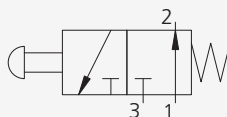
product
design
award

2006

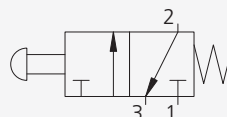
3/2-Wegeventil / solenoid valve Typ FG4-P3



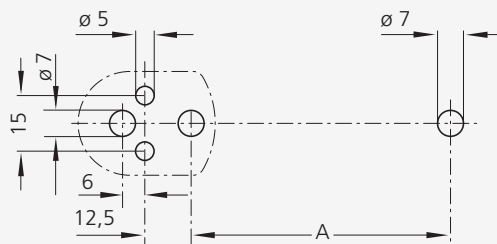
Version A Normally opened



Version B Normally closed



Mounting cutout



Handles with 3/2-solenoid valve

Version A			Version B	
A*	L	Order no.	Order no.	
300	360	FG4-P3.A300.11	FG4-P3.B300.11	

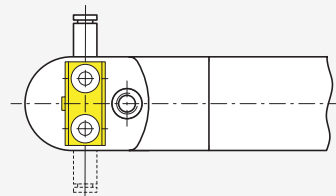
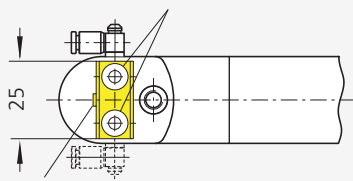
*Other handle lengths on request

5/2-Solenoid valve

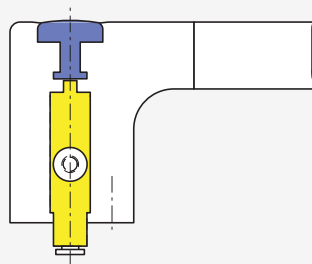
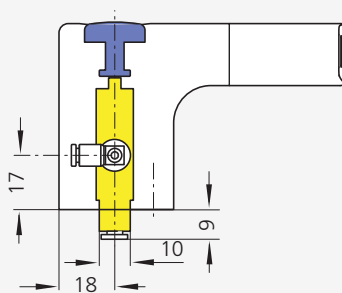
Typ FG4-P5.W
with angled adaptor

Typ FG4-P5.G
with straight adaptor

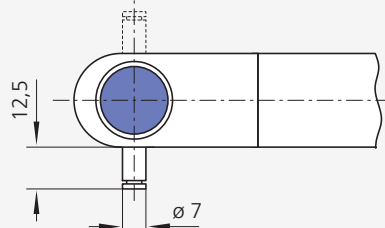
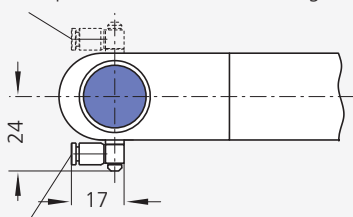
Compressed air connections (2) and (4)



Exit air

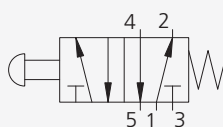


Compressed air connection (1) right

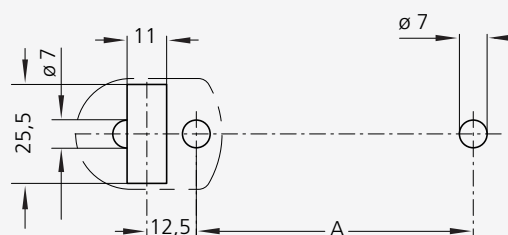


Compressed air connection (1) left

5/2-Solenoid valve



Mounting cutout



Handles with 5/2-solenoid valve

A*	L		Order no.
		with angled adaptor left	FG4-P5.WL300.11
300	360	with straight adaptor left	FG4-P5.GL300.11
		with angled adaptor right	FG4-P5.WR300.11
		with straight adaptor right	FG4-P5.GR300.11

*Other handle lengths on request

All dimensions in mm.



Typ FG4-P5.WL



Typ FG4-P5.GL

Mouser Electronics

Authorized Distributor

Click to View Pricing, Inventory, Delivery & Lifecycle Information:

[Davies Molding:](#)

[FG4-P3.A300.11](#) [FG4-P3.B300.11](#) [FG4-P5.GL300.11](#) [FG4-P5.GR300.11](#) [FG4-P5.WL300.11](#) [FG4-P5.WR300.11](#)