

PART NAME: KNOB SCALE: 1:1 DATE: 4/1/85 DR. BY HD

THIS DRAWING IS THE PROPERTY OF DAVIES MOLDING COMPANY, IS SUBMITTED SOLELY AS A DESIGN OR ENGINEERING PROJECT. WE ACCEPT NO RESPONSIBILITY WHATSOEVER FOR THE PRACTICAL APPLICATION OF THE PIECES MADE TO THIS DESIGN.



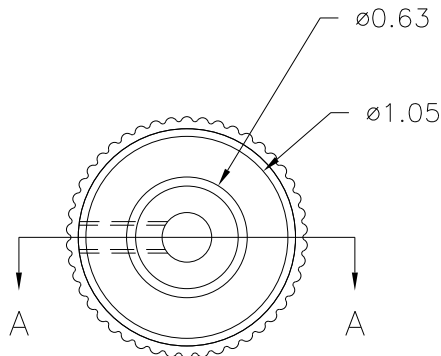
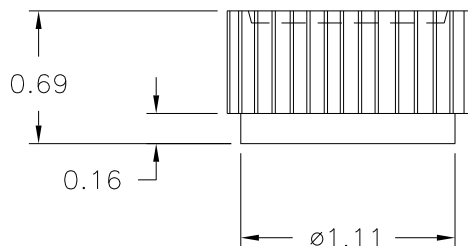
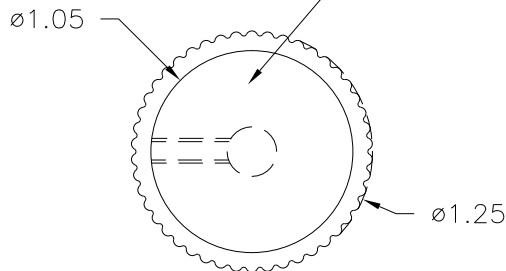
DESIGNERS & MANUFACTURERS  
OF KNOBS, HANDLES, CASES &  
CUSTOM PLASTIC COMPONENTS

P/N 8125-B

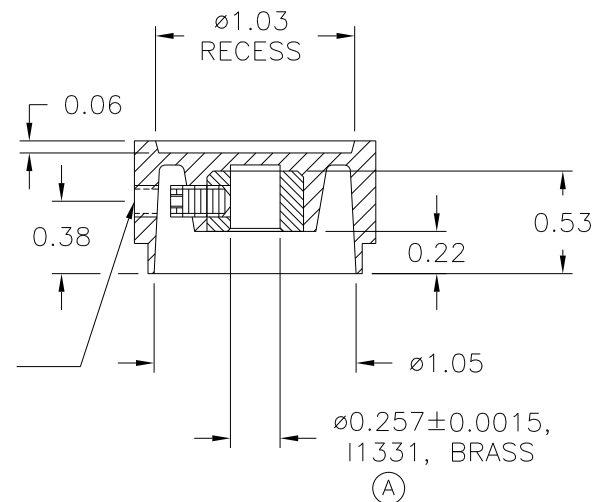
BASE PART 8125-01

SET SCREW I0249

TEXTURED TOP SURFACE  
(RE-6627)



SECTION A-A



USE #28 DRILL (0.140), #8-32 TAP,  
#8-32 X 5/16 LG. CUP POINTED, HEADLESS,  
SOCKET TYPE, SET SCREW, I0249

MATERIAL: ABS  
COLOR: BLACK

| TOLERANCES:<br>UNLESS OTHERWISE SPECIFIED | DO NOT SCALE<br>DRAWING          |         |                     |     |          |
|---|----------------------------------|---------|---------------------|-----|----------|
|   |                                  | A       | WAS I1317           | JAM | 9/13/13  |
| DECIMALS: X.XXX ± .005<br>X.XX ± .015     | MM: X.XX ± 0.15MM<br>X.X ± 0.4MM | -       | UPDATED/HAD TOOLBOX | ST  | 5/2/2000 |
|   |                                  | -       | CAD/REDRAWN         | HD  | 8/17/92  |
| FRACTIONS ± 1/64                          | ANG. ± 1°                        | CHANGES |                     |     |          |

# Mouser Electronics

Authorized Distributor

Click to View Pricing, Inventory, Delivery & Lifecycle Information:

[Davies Molding:](#)

[8125-B](#)