

PART NAME: KNOB

SCALE: 1:1

DATE: 6/1/94

DR. BY HD

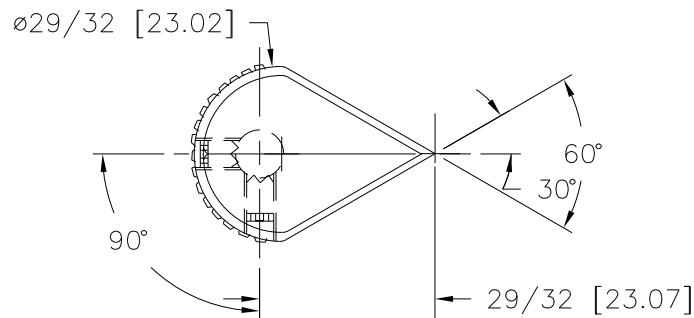
THIS DRAWING IS THE PROPERTY OF DAVIES MOLDING COMPANY, IS SUBMITTED SOLELY AS A DESIGN OR ENGINEERING PROJECT. WE ACCEPT NO RESPONSIBILITY WHATSOEVER FOR THE PRACTICAL APPLICATION OF THE PIECES MADE TO THIS DESIGN.

DESIGNERS & MANUFACTURERS
OF KNOBS, HANDLES, CASES &
CUSTOM PLASTIC COMPONENTS

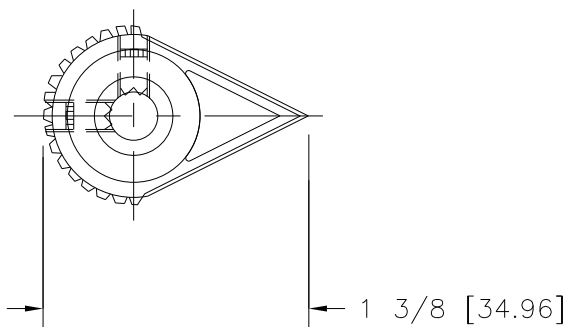
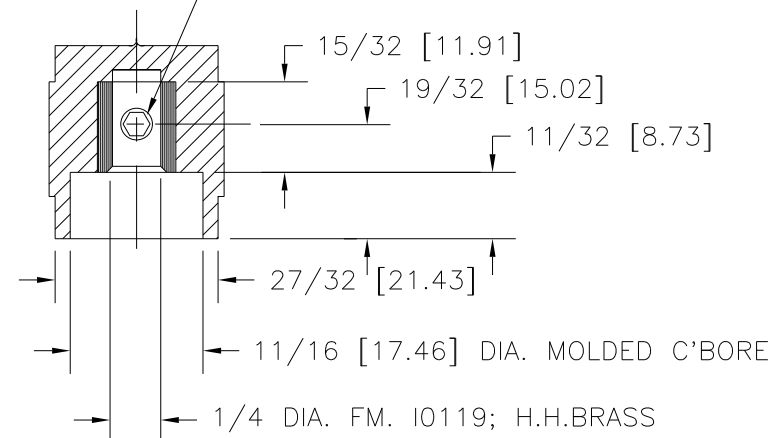
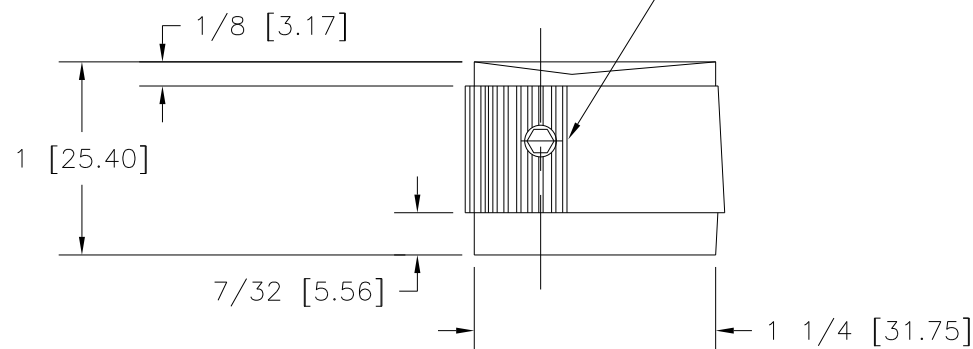
P/N 8010-E

BASE PART 8010-01

SET SCREW I1266



C'SK; USE # 28 DR.(.140 DIA.); 8-32 TAP.

8-32 X 1/4 LG. THD'D. CUP POINTED,
HEADLESS, SOCKET, SET SCREW
I1266, TWO(2) REQ'D. AS SHOWN 90° APART

Ⓐ MATERIAL: NYLON 6/6 (CLC) Ⓑ
COLOR: BLACK

| TOLERANCES: UNLESS OTHERWISE SPECIFIED | DO NOT SCALE DRAWING | | | | |
|---|----------------------------------|---------|------------------|-----|----------|
| | | B | ADDED MAT. CODE | DS | 1/24/07 |
| DECIMALS: X.XXX ± .005 X.XX ± .015 | MM: X.XX ± 0.15MM X.X ± 0.4MM | — | UPDATED TOOLBOX | JAM | 11/25/02 |
| | | A | Was ABS Material | TS | 8/12/98 |
| FRACTIONS ± 1/64 | ANG. ± 1° | CHANGES | | | |

Mouser Electronics

Authorized Distributor

Click to View Pricing, Inventory, Delivery & Lifecycle Information:

[Davies Molding:](#)

[8010-E](#)