

PART NAME: KNOB SCALE: 1:1 DATE: 10/9/40 DR. BY JC

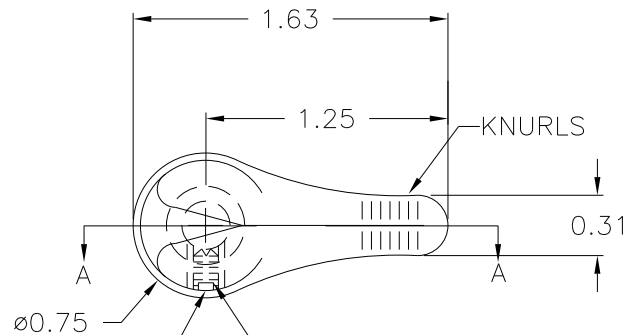
THIS DRAWING IS THE PROPERTY OF DAVIES MOLDING COMPANY, IS SUBMITTED SOLELY AS A DESIGN OR ENGINEERING PROJECT.  
WE ACCEPT NO RESPONSIBILITY WHATSOEVER FOR THE PRACTICAL APPLICATION OF THE PIECES MADE TO THIS DESIGN.

DAVIES MOLDING COMPANY  
CAROL STREAM, ILLINOIS 60188

P/N 2110

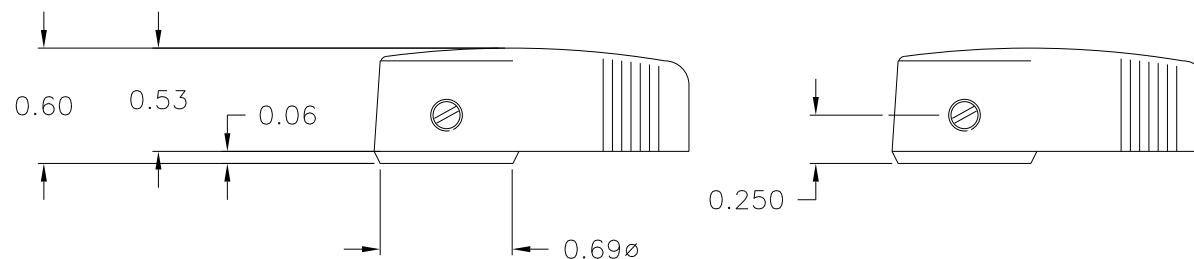
BASE PART 2110-01

SET SCREW I0328

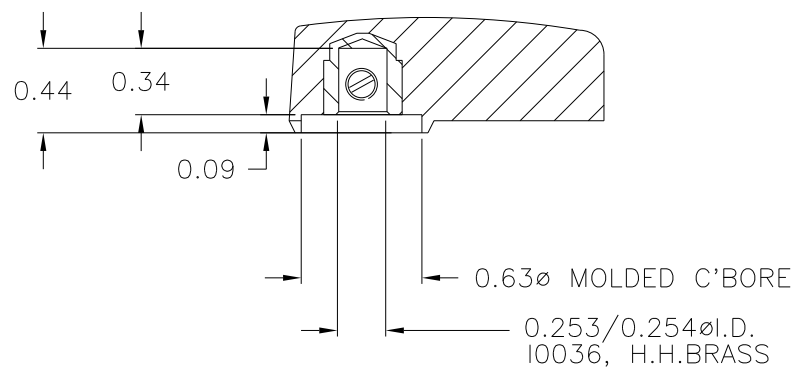


SET SCREW ON LEFT SIDE  
LOOKING AT FRONT OF  
KNOB

USE # 28 DR. (.140 ) DIA.; # 8-32 TAP.  
# 8-32 THD. X 3/16 LG. CUP POINTED,  
SLOTTED TYPE, SET SCREW I0328 (1)



SECTION A-A



MATERIAL: G.P. PHENOLIC (B11)  
COLOR: BLACK

TOLERANCES: UNLESS OTHERWISE SPECIFIED	DO NOT SCALE DRAWING				
DECIMALS: X.XXX ± .005 X.XX ± .015	MM: X.XX ± 0.15MM X.X ± 0.4MM	-	UPDATED TOOLBOX	JAM	10/30/02
		-	CAD/REDRAWN	HD	9/17/97
FRACTIONS ± 1/64	ANG. ± 1°	CHANGES			

# Mouser Electronics

Authorized Distributor

Click to View Pricing, Inventory, Delivery & Lifecycle Information:

[Davies Molding:](#)

[2110](#)