

PART NAME: KNOB SCALE: 1:1 DATE: 7/15/97 DR. BY HD

THIS DRAWING IS THE PROPERTY OF DAVIES MOLDING COMPANY, IS SUBMITTED SOLELY AS A DESIGN OR ENGINEERING PROJECT. WE ACCEPT NO RESPONSIBILITY WHATSOEVER FOR THE PRACTICAL APPLICATION OF THE PIECES MADE TO THIS DESIGN.

DAVIES MOLDING COMPANY
CAROL STREAM, ILLINOIS 60188

P/N 1940BG

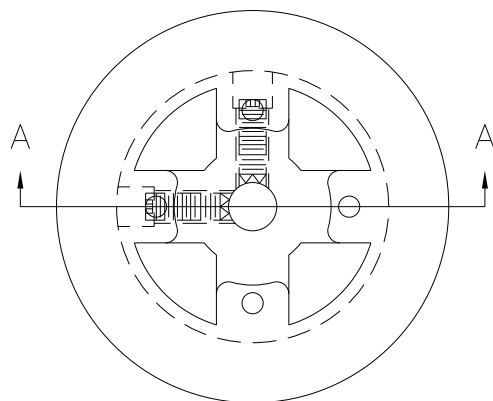
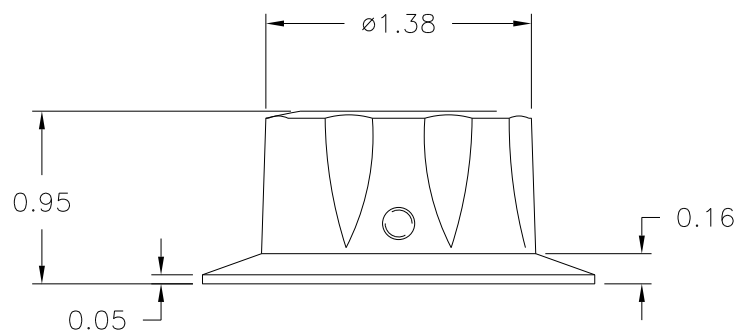
BASE PART 1940-01

INLAY I0566(SS)

SET SCREW I0545

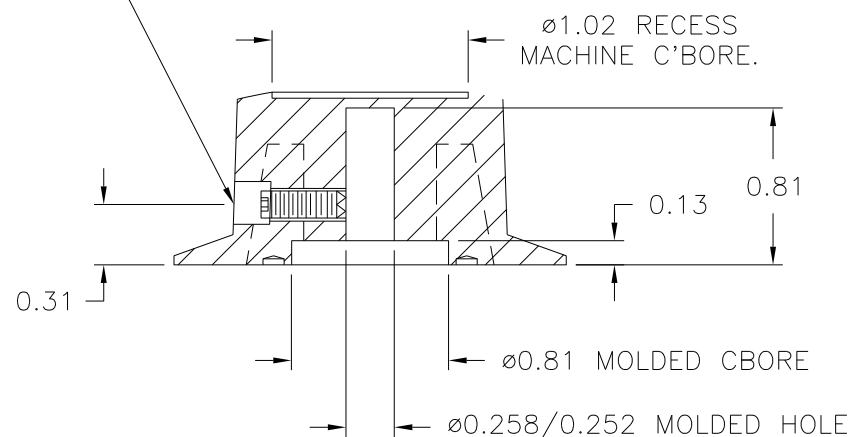
Ø2.01
(A)
INLAY I0566(SS)
(SPUN-SILVER, ALUMINUM)

PAD PRINTED INDICATOR
LINE IN-WHITE.



(B)
MATERIAL: 04311 PHENOLIC (B41)
COLOR: BLACK

$\frac{3}{16} \times \frac{3}{16}$ MACHINE C'BORE
USE #28 DRILL ($\phi 0.140$), #8-32 TAP.
#8-32 THREAD X 7/16 LG. CUP POINTED,
SOCKET TYPE, SET SCREW I0545 (2)



SECTION A-A

| | | | | | |
|---|----------------------------------|---------|-----------------------------|-----|---------|
| TOLERANCES: UNLESS OTHERWISE SPECIFIED | DO NOT SCALE DRAWING | | | | |
| DECIMALS: X.XXX ± .005 X.XX ± .015 | MM: X.XX ± 0.15MM X.X ± 0.4MM | B | WAS #2511 PHENOLIC (B11) | JAM | 7/16/08 |
| | | — | UPDATED/HAD TOOLBOX | ST | 12/5/00 |
| | | A | WAS ø2.00 | TL | 9/24/99 |
| FRACTIONS ± 1/64 | ANG. ± 1° | CHANGES | | | |

Mouser Electronics

Authorized Distributor

Click to View Pricing, Inventory, Delivery & Lifecycle Information:

[Davies Molding:](#)

[1940BG](#)