

PART NAME: KNOB SCALE: 1:1 DATE: 9/2/97 DR. BY HD

THIS DRAWING IS THE PROPERTY OF DAVIES MOLDING COMPANY, IS SUBMITTED SOLELY AS A DESIGN OR ENGINEERING PROJECT. WE ACCEPT NO RESPONSIBILITY WHATSOEVER FOR THE PRACTICAL APPLICATION OF THE PIECES MADE TO THIS DESIGN.

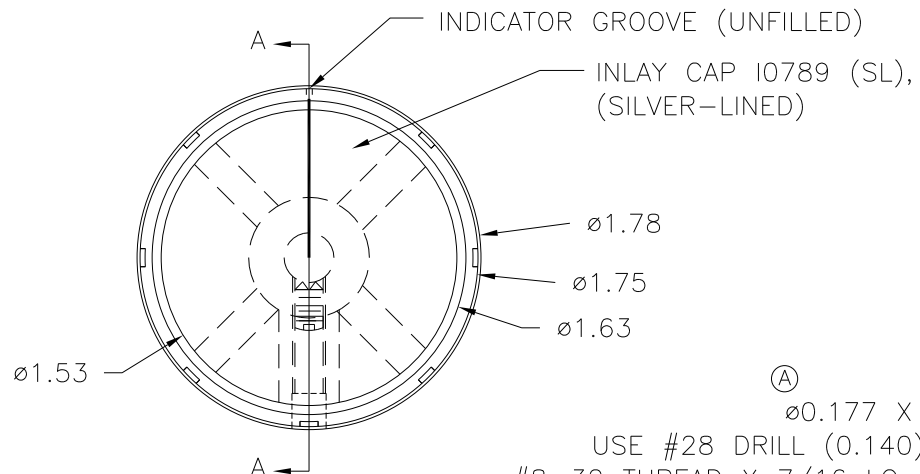
DAVIES MOLDING COMPANY
CAROL STREAM, ILLINOIS 60188

P/N 1208AY

BASE PART 1208-02

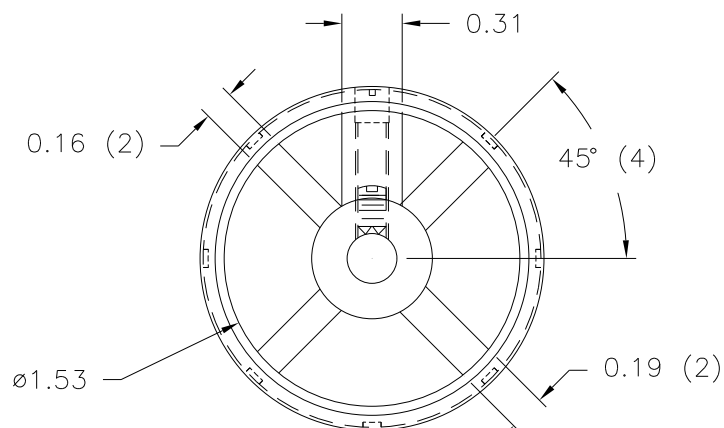
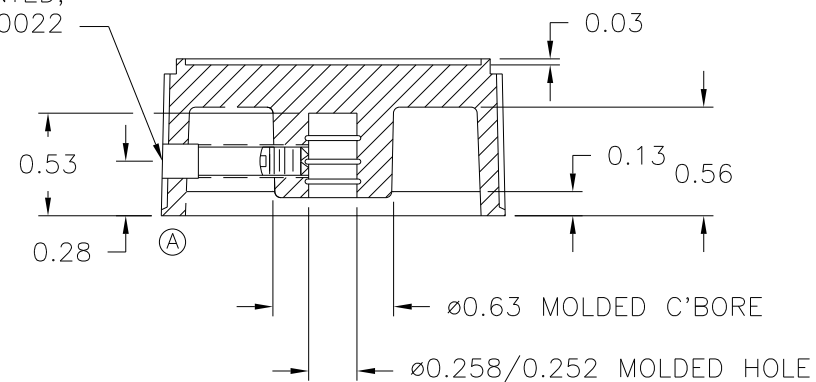
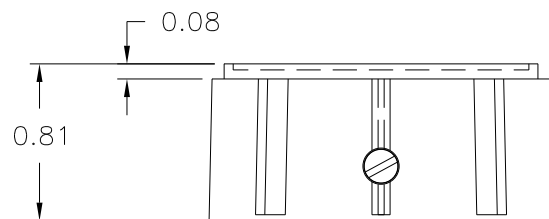
S.SCREW I0022

CAP INLAY I0789(SL)



Ⓐ
ø0.177 X 3/16 CBORE,
USE #28 DRILL (0.140), #8-32 TAP,
#8-32 THREAD X 7/16 LG. CUP POINTED,
SLOTTED TYPE, SET SCREW I0022

SECTION A-A



MATERIAL: G.P. PHENOLIC (B11)
COLOR: BLACK

TOLERANCES: UNLESS OTHERWISE SPECIFIED		DO NOT SCALE DRAWING					
DECIMALS: X.XXX ± .005 X.XX ± .015	MM: X.XX ± 0.15MM X.X ± 0.4MM	A	ADDED CBORE, REDRAWN INCORRECTLY	JAM	1/11/02		
		—	UPDATED/HAD TOOLBOX	ST	4/11/2000		
FRACTIONS ± 1/64		ANG. ± 1°		CHANGES			

Mouser Electronics

Authorized Distributor

Click to View Pricing, Inventory, Delivery & Lifecycle Information:

[Davies Molding:](#)

[1208AY](#)