

PART NAME: BALL KNOB SCALE: 1:1 DATE: 3/16/04 DR. BY JAM

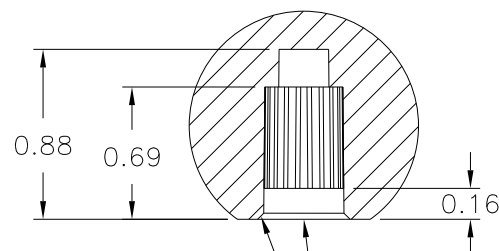
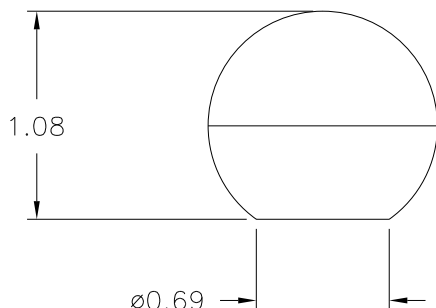
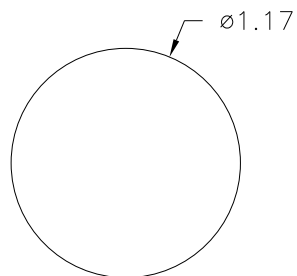
THIS DRAWING IS THE PROPERTY OF DAVIES MOLDING COMPANY, IS SUBMITTED SOLELY AS A DESIGN OR ENGINEERING PROJECT. WE ACCEPT NO RESPONSIBILITY WHATSOEVER FOR THE PRACTICAL APPLICATION OF THE PIECES MADE TO THIS DESIGN.



DESIGNERS & MANUFACTURERS
OF KNOBS, HANDLES, CASES &
CUSTOM PLASTIC COMPONENTS

P/N 0013

UNIT IN PRESS	DH1 OR 2
F ^{NO} TOP	IR-14
F ^{NO} BOTTOM	IR-14
CAVITY	M-13
CORE	M-13
PIN PLATE BUSHING	0013
SLEEVE PLATE BUSHING	0013
SLEEVE	SL0013
PIN	BP0013



1/32 X 45° CHAMFER

MOLDED SPLINE TO FIT ø3/8 SHAFT (A)
(SPLINE HOLE TO ACCEPT ø0.360 PIN TO BOTTOM/ø0.368 PIN TO START OF HOLE)

MATERIAL: 33% GLASS FILLED NYLON (BD1)
COLOR: BLACK

TOLERANCES: UNLESS OTHERWISE SPECIFIED	DO NOT SCALE DRAWING				
DECIMALS: X.XXX ± .005 X.XX ± .015	MM: X.XX ± 0.15MM X.X ± 0.4MM	A	WAS "CHECK WITH ø0.365 GAGE PIN"	JAM	12/9/15
FRACTIONS ± 1/64	ANG. ± 1°	CHANGES			

Mouser Electronics

Authorized Distributor

Click to View Pricing, Inventory, Delivery & Lifecycle Information:

[Davies Molding:](#)

[0013](#)