



**All-In-One
Camera**

View, Capture,
& Save Images/
Videos

**HDMI
Mode**

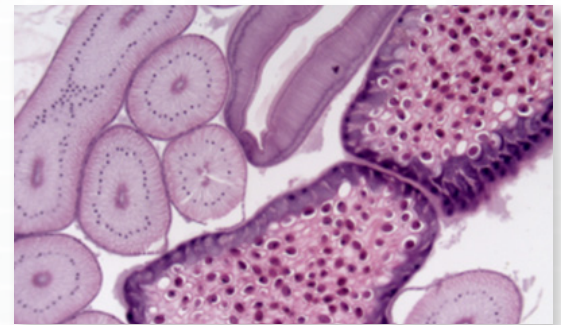
View 1080p live
images on an
HD Monitor

**USB
Mode**

Utilize advanced
measurement
software on PC

**Enhances
Productivity**

Eliminates eye
strain &
body fatigue



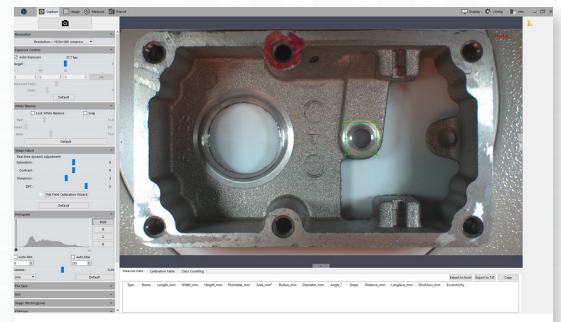
Excellent Color Reproduction

Mighty Cam ES

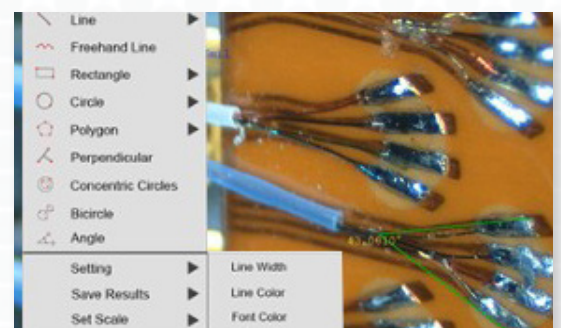
w/ USB + HDMI Outputs & SD Card Port

The Mighty Cam ES is a streamlined HDMI/USB camera designed for quick and accurate inspection. View 1080p live images on your HD monitor, or utilize the advanced measurement software on your PC. Capture true-to-life images and videos directly to the SD Card or on your PC. The 5mp HD image sensor provides detailed images with true-to-life color reproduction.

The industry-standard C C/S mount makes this camera compatible with most macro/micro lenses and trinocular microscopes. The universal 1/4-20 mount on the back of the camera works with most camera stands.



**USB Mode- Advanced Imaging/
Measurement Software Included**



**HDMI Mode: Image/Video Capture,
On-Screen Tools
(No PC required)**

Mighty Cam ES		
Item #	26100-259	
Software	USB 2.0 Mosaic V2	HDMI Cloud 1.0 ver
Resolution	2MP 2592 (H) x 1944 (V)	
Frame Rate	USB 2.0 @ 15FPS	HDMI @ 15FPS
Data Interface	HDMI, USB 2.0, SD Card	
Optical Interface	Standard C Mount	



**Sample Digital
Microscope**



**Ball Joint 360
Rotation**



**Mighty Cam
ES**

HDMI/USB Camera
designed for quick &
accurate inspection

**Macro
Lens**

7x - 70x
Magnification at a 6"
working distance

**Ultimate
Flexibility**

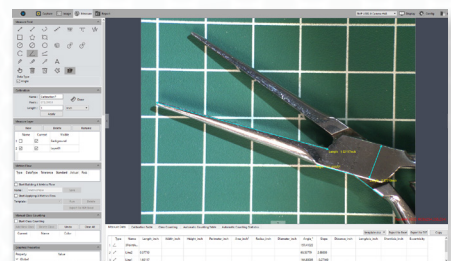
18" Flexible arm
with a 360 ball
joint

**LED Ring
Light**

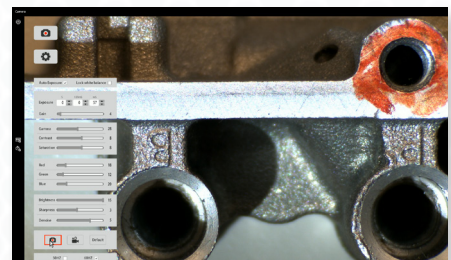
Provides uniformity
& shadow free
illumination



Excellent Color Reproduction



**USB Mode- Advanced Imaging/
Measurement Software Included**



**HDMI Mode: Image/Video Capture,
On-Screen Tools (No PC required)**

Mighty Cam ES

[7x-70x] w/ Macro Lens & Flex-Arm Stand

High Definition 1080p inspection system with a 22" monitor offering superb image quality. **Provides a magnification range of 7x to 70x with a 6" working distance.** You can operate this system with or without a PC. Without a PC, the camera connects directly to the included HDMI monitor. View and record images using the included on screen tools. Images & videos can be saved to the included SD card. Connect the camera to a PC to utilize more advanced features in the included software. The included LED ring light allows you to illuminate the object to get the sharpest and greatest detail.

Features

- Superior optics: 7x-70x magnification at a 6 inch working distance
- Camera features HDMI and USB outputs for use with an HD monitor or PC
- Save high resolution image/video files to the included SD Card no PC required
- Advanced imaging/measurement software included for PC mode
- 18 inch flexible arm with a 360 ball joint provides limitless positioning options
- LED ring light with 96 ultra-bright, adjustable LEDs

Mighty Cam ES

7x-70x w/ Macro Lens & Flex-Arm Stand

Item #	26700-121-ES	
Magnification	7x - 70x	
Working Distance	6"	
Interface	USB 2.0 & HDMI	
Resolution	2MP 2592 (H) x 1944 (V)	
Frame Rate	USB 2.0 @ 15FPS	HDMI @ 15FPS
Software	USB 2.0 Mosaic V2	HDMI Cloud 1.0 ver
Package Contents	<ul style="list-style-type: none"> • Mighty Cam ES (26100-259) • Computer Macro Lens (26700-181) • FlexArm With Table Clamp (26800B-557) • 360 Ball Joint (26700-412) • LED Ring Light (26200B-216) • 22" LCD HD Monitor (26700-406) 	



Mighty Cam ES

HDMI/USB Camera designed for quick & accurate inspection

Macro Lens

3x - 70x Magnification

Heavy Duty Post Stand

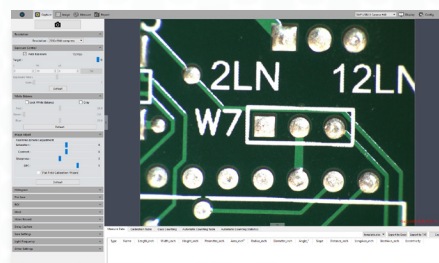
Accommodates a large variety of parts

LED Ring Light

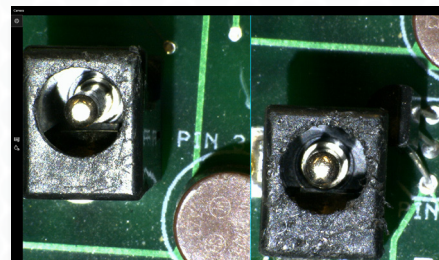
Provides uniformity & shadow free illumination



Excellent Color Reproduction



USB Mode- Advanced Imaging/
Measurement Software Included



HDMI Mode: Image/Video Capture,
On-Screen Tools (No PC required)

Mighty Cam ES

[3x-43x] w/ Macro Lens & Post Stand

High Definition 1080p inspection system with a 22" monitor offering superb image quality. **Provides a magnification range of 3x to 43x with excellent field of view at a 20mm-300mm working distance.** You can operate this system with or without a PC. Without a PC, the camera connects directly to the included HDMI monitor. View and record images using the included on screen tools. Images & videos can be saved to the included SD card. Connect the camera to a PC to utilize more advanced features in the included software.

Features

- 3x-43x Magnification
- Camera features HDMI and USB outputs for use with an HD monitor or PC
- Save high resolution image/video files to the included SD Card - no PC required
- Advanced imaging/measurement software included for PC mode
- LED ring light with 96 ultra-bright, adjustable LEDs

Mighty Cam ES

3x-43x w/ Macro Lens & Post Stand

Item #	26700-108-ES	
Magnification	3x-43x	
Working Distance	20mm - 300mm	
Interface	USB 2.0 & HDMI	
Resolution	2MP 2592 (H) x 1944 (V)	
Frame Rate	USB 2.0 @ 15FPS	HDMI @ 15FPS
Software	USB 2.0 Mosaic V2	HDMI Cloud 1.0 ver
Package Contents	<ul style="list-style-type: none"> • Mighty Cam ES (26100-259) • Macro Lens (26700-182) • Standard Post Stand (26800B-571) • N-Type Focus Mount (26800B-578) • 22" LCD HD Monitor (26700-406) • LED Ring Light (26200B-216) 	



Mighty Cam ES

[7x-70x] w/ Macro Lens & Post Stand

High Definition 1080p inspection system with a 22" monitor offering superb image quality. **Provides a magnification range of 7x to 70x with a 6" working distance.** You can operate this system with or without a PC. Without a PC, the camera connects directly to the included HDMI monitor. View and record images using the included on screen tools. Images & videos can be saved to the included SD card. Connect the camera to a PC to utilize more advanced features in the included software. The LED Ring Light is built into the focus mount to ensure that it is secure and won't come loose

Features

- Camera features HDMI and USB outputs
- Inspect directly on an HD monitor or from a computer
- Advanced imaging/measurement software included
- 7x - 70x Magnification at a 6 inch working distance
- Includes Aven's Focus mount with built-in LED ring light
- LED Ring Light is built into the focus mount to ensure that it is secure and will not come loose

Mighty Cam ES

HDMI/USB Camera designed for quick & accurate inspection

Macro Lens

7x - 70x Magnification at a 6" working distance

Heavy Duty Post Stand

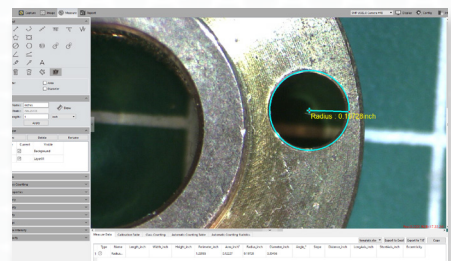
Accommodates a large variety of parts

Focus Mount w/ Built in LED Ring Light

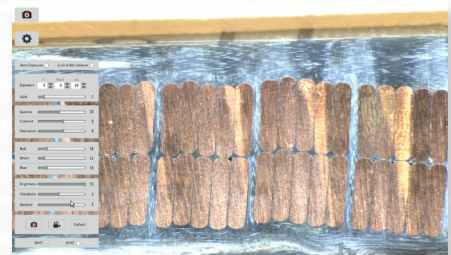
Ensures ring light is secure and won't come loose



Excellent Color Reproduction



USB Mode- Advanced Imaging/ Measurement Software Included



HDMI Mode: Image/Video Capture, On-Screen Tools (No PC required)

Mighty Cam ES		
7x-70x w/ Macro Lens & Post Stand		
Item #	258-207-570-ES	
Magnification	7x-70x	
Working Distance	6"	
Interface	USB 2.0 & HDMI	
Resolution	2MP 2592 (H) x 1944 (V)	
Frame Rate	USB 2.0 @ 15FPS	HDMI @ 15FPS
Software	USB 2.0 Mosaic V2	HDMI Cloud 1.0 ver
Package Contents	<ul style="list-style-type: none"> • Mighty Cam ES (26100-259) • Standard Stand 25mm (26800B-570) • Computer Macro Lens (26700-181) • Focus Mount with LED Ring Light (26200B-207) • 22" HD Monitor (26700-406) • Computer Lens Adapter (26700-181AP) 	



Mighty Cam ES

HDMI/USB Camera designed for quick & accurate inspection

Micro Lens

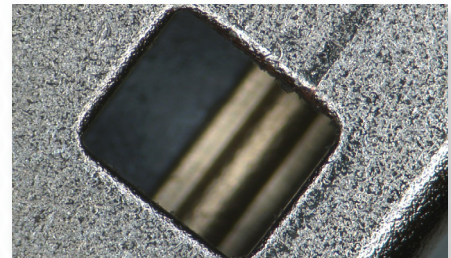
28.8x - 384x Magnification

Heavy Duty Post Stand

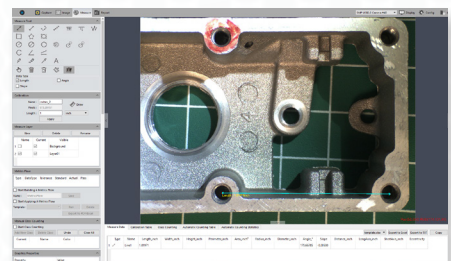
Accommodates a large variety of parts

LED Ring Light

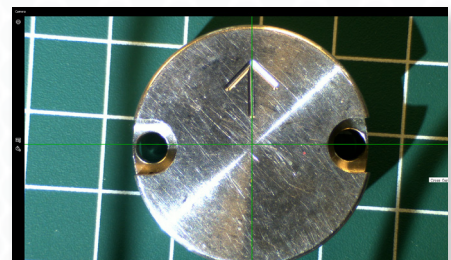
Provides uniformity & shadow free illumination



Excellent Color Reproduction



USB Mode- Advanced Imaging/ Measurement Software Included



HDMI Mode: Image/Video Capture, On-Screen Tools (No PC required)

Mighty Cam ES

[28.8x-384x] w/ Micro Lens & Post Stand

High Definition 1080p inspection system with a 22" monitor offering superb image quality. **Provides a magnification range of 28.8x to 384x.** You can operate this system with or without a PC. Without a PC, the camera connects directly to the included HDMI monitor. View and record images using the included on screen tools. Images & videos can be saved to the included SD card. Connect the camera to a PC to utilize more advanced features in the included software. The included LED ring light allows you to illuminate the object to get the sharpest and greatest detail.

Features

- 57.6x - 384x Magnification (28.8x - 192x when using the 0.5x objective lens)
- Camera features HDMI and USB outputs for use with an HD monitor or PC
- Save high resolution image/video files to the included SD Card - no PC required
- Advanced imaging/measurement software included for PC mode
- LED ring light with 96 ultra-bright, adjustable LEDs

Mighty Cam ES

28.8x-384x w/ Micro Lens & Post Stand

Item #	26700-109-ES	
Magnification	28.8x-384x	
Working Distance	82mm (w/ 1x Objective & 1x Coupler)	
Interface	USB 2.0 & HDMI	
Resolution	2MP 2592 (H) x 1944 (V)	
Frame Rate	USB 2.0 @ 15FPS	HDMI @ 15FPS
Software	USB 2.0 Mosaic V2	HDMI Cloud 1.0 ver
Package Contents	<ul style="list-style-type: none"> • Mighty Cam ES (26100-259) • Micro Lens (26700-151) • Standard Post Stand (26800B-571) • LED Ring Light (26200B-216) • N-Type Focus Mount (26800B-578) • 22" LCD HD Monitor (26700-406) • 0.5x Coupler (26700-156) 	



**Ball Joint 360
Rotation**

Mighty Cam ES

[7x-70x] w/ Macro Lens & Ultra-Glide Stand

High Definition 1080p inspection system with a 22" monitor offering superb image quality. **Provides a magnification range of 7x to 70x with a 6" working distance.** You can operate this system with or without a PC. Without a PC, the camera connects directly to the included HDMI monitor. View and record images using the included on screen tools. Images & videos can be saved to the included SD card. Connect the camera to a PC to utilize more advanced features in the included software. The included dual gooseneck LED light allows you to illuminate the object to get the sharpest and greatest detail.

Features

- Camera features HDMI and USB outputs
- Inspect directly on an HD monitor or from a computer
- Advanced imaging/measurement software included
- 7x - 70x magnification at a 6 inch working distance
- Ultra Glide Arm Stand provides smooth horizontal movement
- Includes Aven's Dual Gooseneck LED Task Light and a 22" HD monitor

Mighty Cam ES

HDMI/USB Camera designed for quick & accurate inspection

Macro Lens

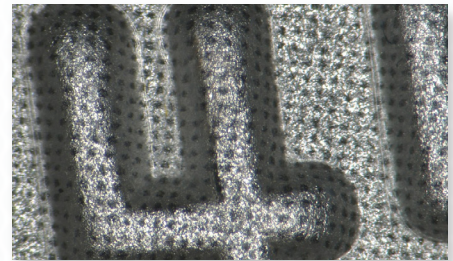
7x - 70x Magnification at a 6" working distance

Ultra Glide Arm Stand

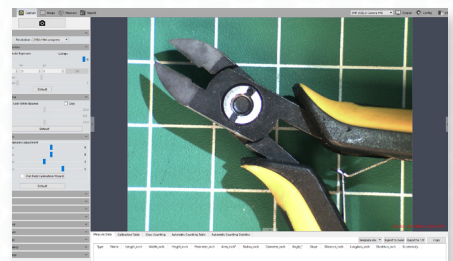
Provides smooth horizontal movement

360 Ball Joint

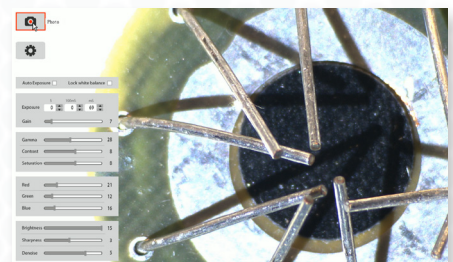
Rotate & tilt the camera to the ideal position



Excellent Color Reproduction



**USB Mode- Advanced Imaging/
Measurement Software Included**



**HDMI Mode: Image/Video Capture,
On-Screen Tools (No PC required)**

Mighty Cam ES		
7x-70x w/ Macro Lens & Ultra-Glide Stand		
Item #	258-181-556-ES	
Magnification	7x-70x	
Working Distance	6"	
Interface	USB 2.0 & HDMI	
Resolution	2MP 2592 (H) x 1944 (V)	
Frame Rate	USB 2.0 @ 15FPS	HDMI @ 15FPS
Software	USB 2.0 Mosaic V2	HDMI Cloud 1.0 ver
Package Contents	<ul style="list-style-type: none"> • Mighty Cam ES (26100-259) • Ultra Glide Arm Stand (26800B-556) • Computer Macro Lens (26700-181) • Dual Gooseneck LED Task Light (26537) • 22" HD Monitor (26700-406) • E-Arm Focus Mount N-Type (26800B-578) • 360 Swivel Ball Joint (26700-412) 	



Mighty Cam ES

HDMI/USB Camera designed for quick & accurate inspection

Macro Lens

7x - 70x Magnification at a 6" working distance

Double Arm Boom Stand

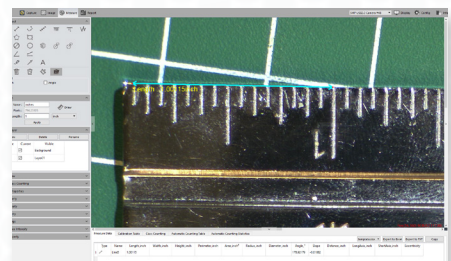
Provides smooth horizontal movement

Focus Mount w/ Built in LED Ring Light

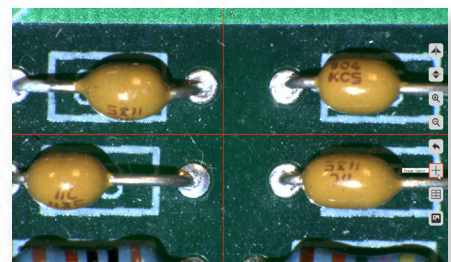
Ensures ring light is secure and won't come loose



Excellent Color Reproduction



USB Mode- Advanced Imaging/ Measurement Software Included



HDMI Mode: Image/Video Capture, On-Screen Tools (No PC required)

Mighty Cam ES

[7x-70x] w/ Macro Lens & Double Arm Boom Stand

High Definition 1080p inspection system with a 22" monitor offering superb image quality. **Provides a magnification range of 7x to 70x with a 6" working distance.** You can operate this system with or without a PC. Without a PC, the camera connects directly to the included HDMI monitor. View and record images using the included on screen tools. Images & videos can be saved to the included SD card. Connect the camera to a PC to utilize more advanced features in the included software.

Features

- Camera features HDMI and USB outputs
- Inspect directly on an HD monitor or from a computer
- Advanced imaging/measurement software included
- 7x - 70x Magnification at a 6 inch working distance
- Double Arm Boom Stand provides smooth horizontal movement across the object being viewed
- LED Ring Light is built into the focus mount to ensure that it is secure and will not come loose

Mighty Cam ES

7x-70x w/ Macro Lens & Double Arm Boom Stand

Item #	258-209-534-ES	
Magnification	7x-70x	
Working Distance	6"	
Interface	USB 2.0 & HDMI	
Resolution	2MP 2592 (H) x 1944 (V)	
Frame Rate	USB 2.0 @ 15FPS	HDMI @ 15FPS
Software	USB 2.0 Mosaic V2	HDMI Cloud 1.0 ver
Package Contents	<ul style="list-style-type: none"> • Mighty Cam ES (26100-259) • Double Arm Boom Stand (26800B-534) • Computer Macro Lens (26700-181) • Focus Mount with LED Ring Light (26200B-209) • 22" HD Monitor (26700-406) • Computer Lens Adapter (26700-181AP) 	

Mouser Electronics

Authorized Distributor

Click to View Pricing, Inventory, Delivery & Lifecycle Information:

[Aven:](#)

[258-181-556-ES](#) [258-207-570-ES](#) [258-209-534-ES](#) [26700-108-ES](#) [26700-109-ES](#) [26700-121-ES](#)