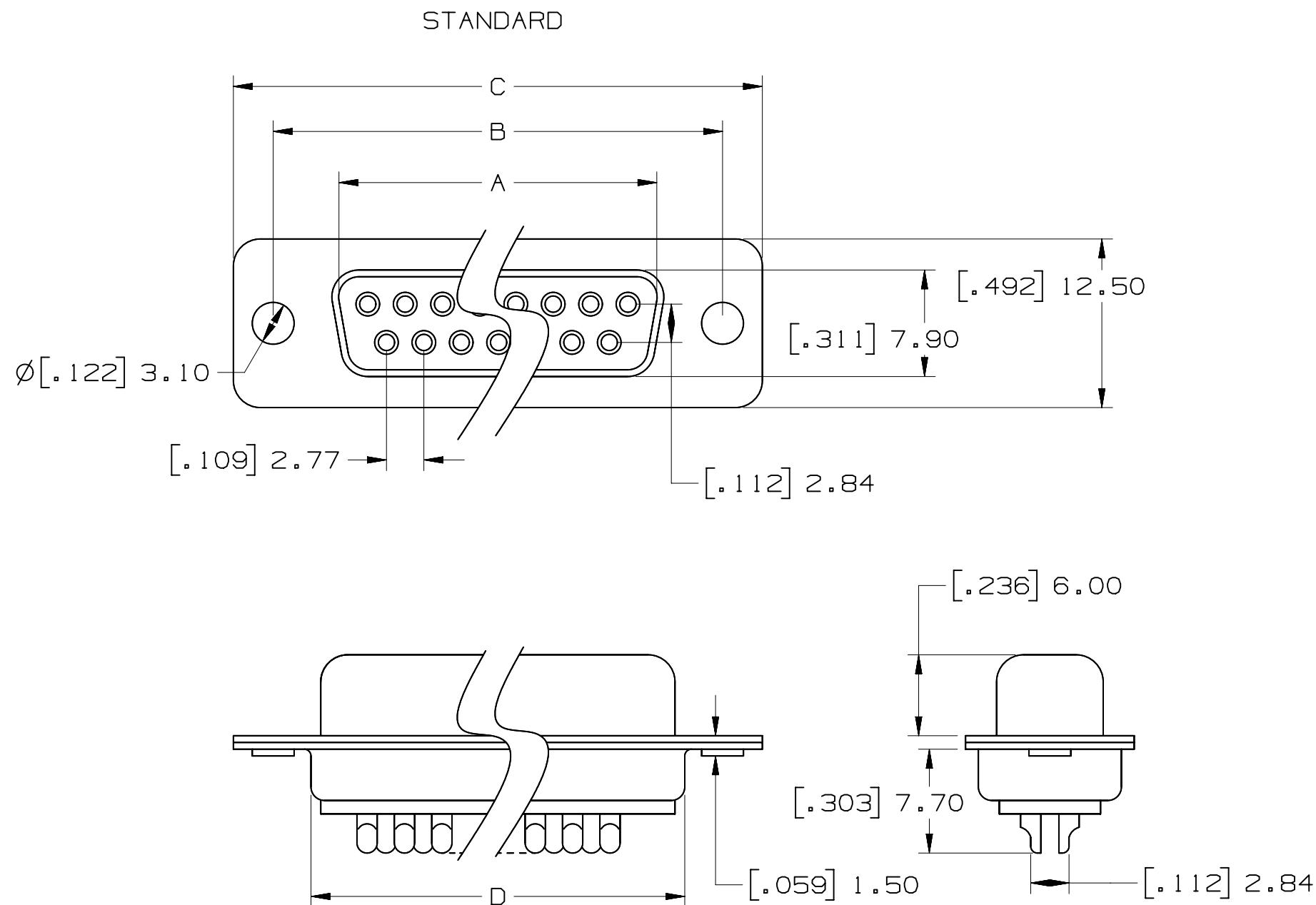


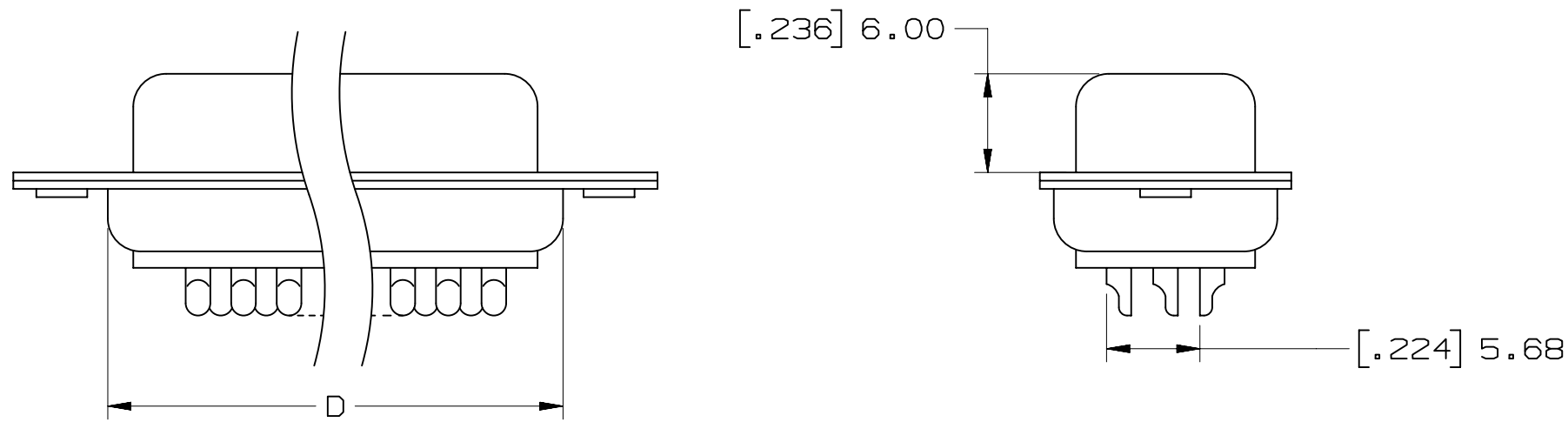
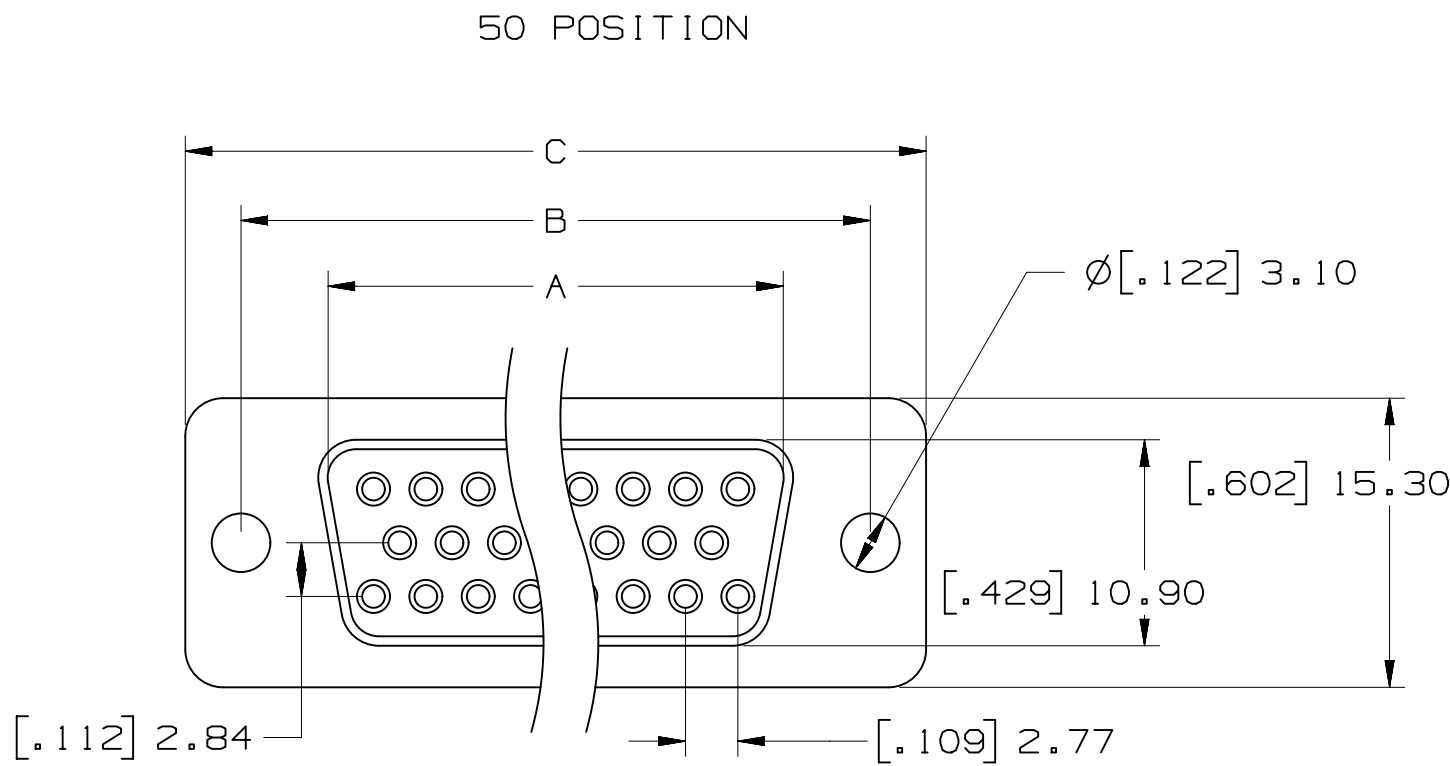
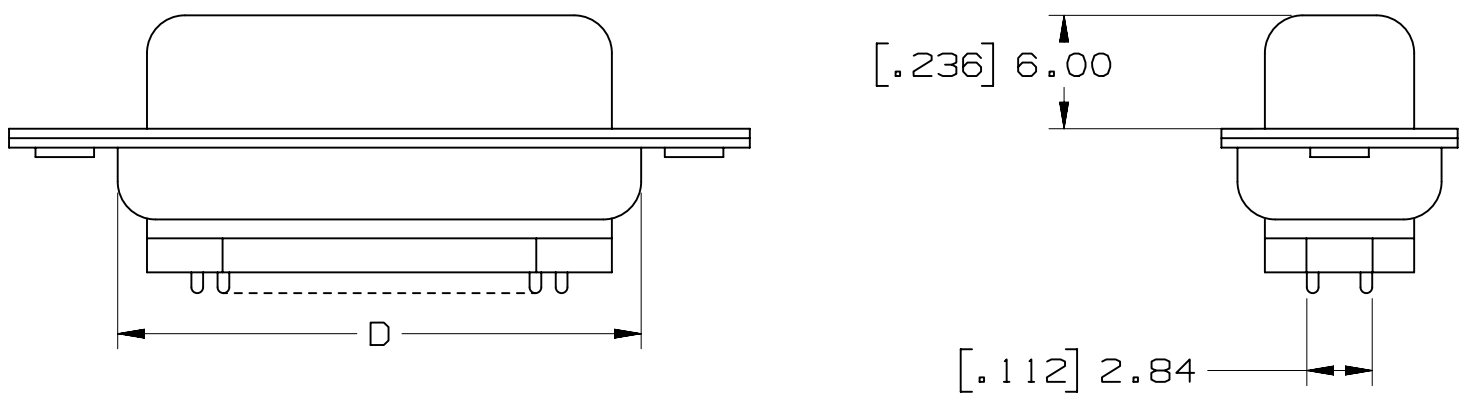
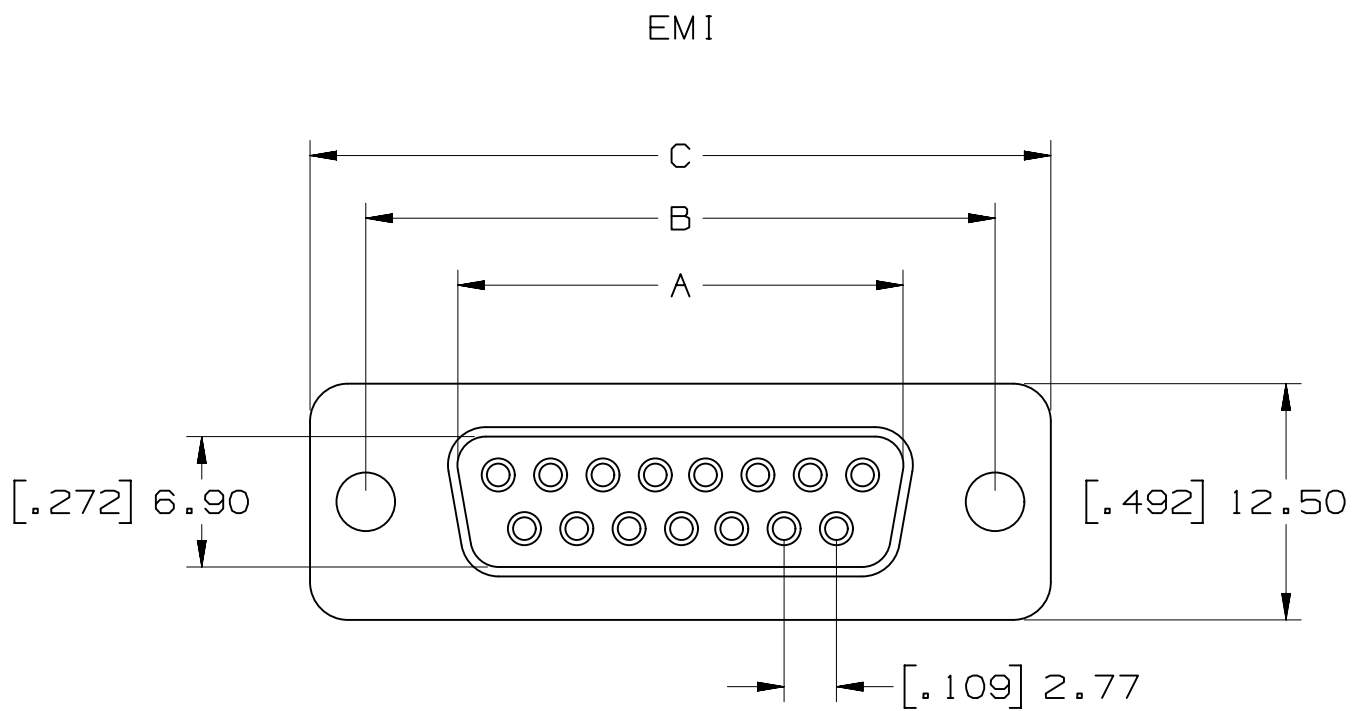
3M™ Solder Cup D Sub Socket, 8000 Series



POSITION	A	B	C	D
9	[.642] 16.30	[.984] 25.00	[1.213] 30.80	[.756] 19.20
15	[.969] 24.60	[1.311] 33.30	[1.543] 39.20	[1.091] 27.70
25	[1.508] 38.30	[2.248] 57.10	[2.091] 53.10	[1.618] 41.10
37	[2.157] 54.80	[2.500] 63.50	[2.732] 69.40	[2.256] 57.30
50*	[2.055] 52.20	[2.402] 61.00	[2.638] 67.00	[2.169] 55.10

*50 POSITION AVAILABLE IN STANDARD ONLY

PERFORMANCE	
OPERATION VOLTAGE:	250V MAX.
CURRENT:	3A MAX.
INSULATION RESISTANCE:	3000 MOhm MIN @ 500VDC
WITHSTANDING VOLTAGE:	1000 VAC / MIN.
TEMPERATURE RATING:	-55°C to 105°C
CONTACT RESISTANCE:	15 mOhms MAX.



8RXX-X00X

NUMBER OF CONTACTS
(SEE TABLE)

PLATING
1 - AU FLASH
2 - 30µ" AU

EMI
N - STANDARD
E - EMI

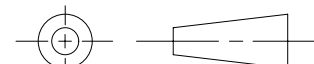
Unless otherwise noted, references to industry specifications are intended to indicate substantial compliance to the material elements of the specification. Such references should not be construed as a guarantee of compliance to all requirements in a given specification.

3M ELECTRONIC SOLUTIONS DIVISION
INTERCONNET SOLUTIONS
<http://www.3mconnectors.com>

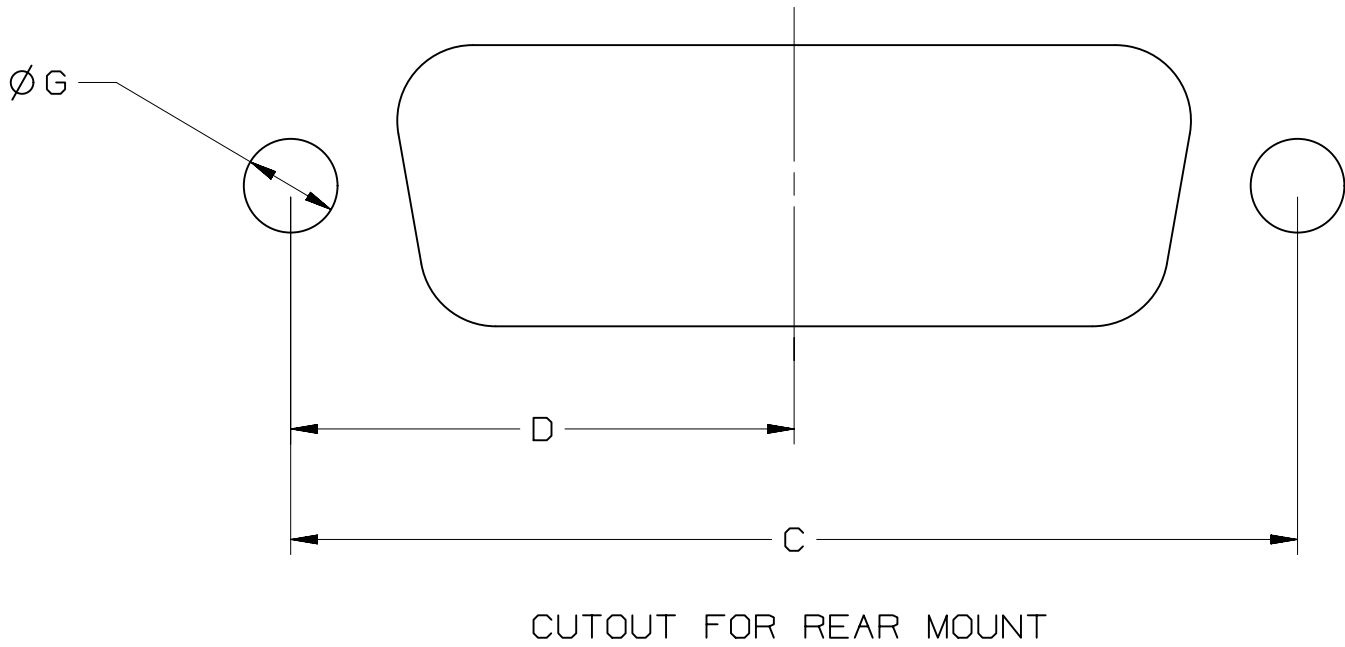
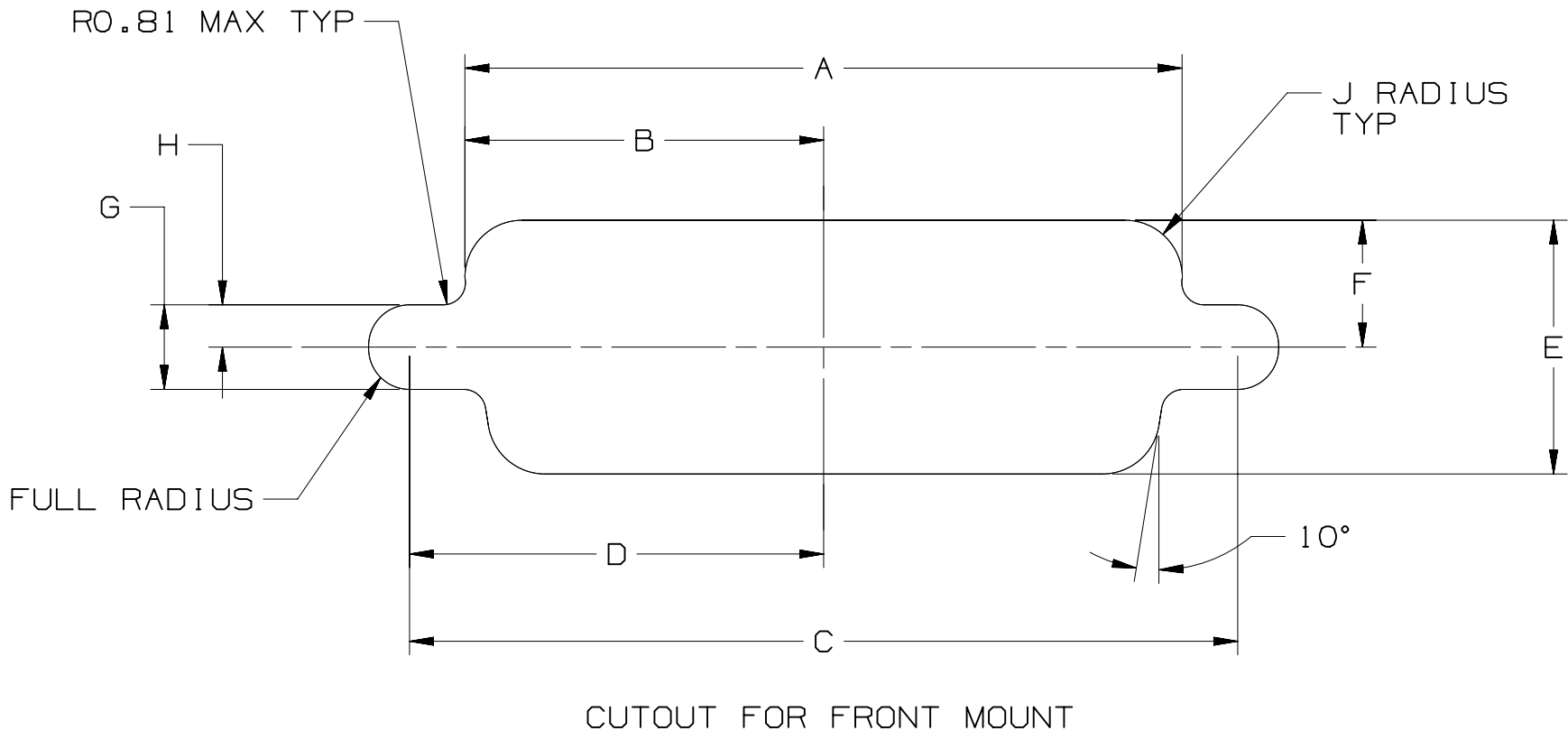
3M IS A TRADEMARK OF 3M COMPANY.
FOR TECHNICAL, SALES OR ORDERING
INFORMATION, CALL 800-225-5373

NOTES

- 1 MATERIAL:
THERMAL PLASTIC UL94V-0
CONTACTS:
COPPER ALLOY
SHELL:
G3141 SPCC OR EQUIVALENT
- 2 PLATING:
50µ" NICKEL UNDERPLATE
1µ" AU WIPING AREA OR
30µ" AU WIPING AREA
100-200µ" TIN (BRIGHT TIN) SOLDER TAIL
- 3 MATES WITH:
BPXX-X00X
- 4 SEE THE REGULATORY INFORMATION
APPENDIX (RIA) IN "RoHS"
COMPLIANCE SECTION OF
WWW.3MCONNECTOR.COM FOR
COMPLIANCE INFORMATION
(RIA E1 & C1 APPLY)

DESIGN REFERENCE		NEXT ASSEMBLY		REV	ECO	ISSUE DATE AND DESCRIPTION		DRFT	CHKD
3M		8RXX-X00X		SJS		DATE	MFG	DATE	
3M		8RXX-X00X		ARM		DATE	APPR	DATE	
DIVISION		DIVISION CODE		© 3M COPYRIGHT 2013					
DO NOT SCALE DRAWING		SCALE 1/1		TOLERANCES EXCEPT AS NOTED		3M 3M Center St. Paul, MN 55144			
		THIRD ANGLE PROJECTION		INTERPRET PER ASME Y14.5 - 1994		TITLE 8RXX-X00X D-SUB SOLDER CUP SOCKET TS-2402			
MAX SURFACE ROUGHNESS 125/		ALL SURFACES		MILLIMETERS 0 ± 1		CAGE NUMBER		DRAWING NO.	
<input checked="" type="checkbox"/> MARKED ONLY		ANGLES ± 1°		INCHES 0 ± 1		ID 78-5100-2402-5		REV. C	
				MILLIMETERS 0 ± 1		MODEL 8R		DET. LISTS <input type="checkbox"/> YES <input checked="" type="checkbox"/> NO SHT 1 OF 7	

POSITION	MOUNTING METHOD	A	B	C	D	E	F	G	H	J
9	FRONT	.874[22.2]	.437[11.1]	.984[25.0]	.492[12.5]	.513[13.0]	.257[6.5]	.120[3.1]	.060[1.5]	.083[2.1]
	REAR	.806[20.5]	.403[10.2]	.984[25.0]	.492[12.5]	.449[11.4]	.225[5.7]	.120[3.1]	.060[1.5]	.132[3.4]
15	FRONT	1.202[30.5]	.601[15.3]	1.312[33.3]	.656[16.7]	.513[13.0]	.257[6.5]	.120[3.1]	.060[1.5]	.083[2.1]
	REAR	1.134[28.8]	.567[14.4]	1.312[33.3]	.656[16.7]	.449[11.4]	.225[5.7]	.120[3.1]	.060[1.5]	.132[3.4]
25	FRONT	1.743[44.3]	.872[22.2]	1.852[47.0]	.926[23.5]	.513[13.0]	.257[6.5]	.120[3.1]	.060[1.5]	.083[2.1]
	REAR	1.674[42.5]	.837[21.3]	1.852[47.0]	.926[23.5]	.449[11.4]	.225[5.7]	.120[3.1]	.060[1.5]	.132[3.4]
37	FRONT	2.391[60.7]	1.196[30.4]	2.500[63.5]	1.250[31.8]	.513[13.0]	.257[6.5]	.120[3.1]	.060[1.5]	.083[2.1]
	REAR	2.326[59.1]	1.163[29.5]	2.500[63.5]	1.250[31.8]	.449[11.4]	.225[5.7]	.120[3.1]	.060[1.5]	.132[3.4]
50	FRONT	2.297[58.3]	1.149[29.2]	2.406[61.1]	1.203[30.6]	.623[15.8]	.312[7.9]	.120[3.1]	.060[1.5]	.083[2.1]
	REAR	2.218[56.3]	1.109[28.2]	2.406[61.1]	1.203[30.6]	.555[14.1]	.278[7.1]	.120[3.1]	.060[1.5]	.132[3.4]



C		46292		MAR 28, 2013		SJS		ARM					
B		34516		CORRECT SHELL MATL AUG 29, 2011		SJS		ARM					
A		34511		CHANGE MOHMS TO MOHMS, UPDATE ROHS MAY 18, 2011		SJS		ARM					
				MAY 18, 2011									
DESIGN REFERENCE		NEXT ASSEMBLY		REV		ECO		ISSUE DATE AND DESCRIPTION		DRFT		CHKD	
XREF CODES				DWG SJS				DATE MAY 18, 2011		MFG		DATE	
				CHKD ARM				DATE MAY 18, 2011		APPRVL		DATE	
DIVISION		DIVISION CODE											
DO NOT SCALE DRAWING		SCALE 1 1		TOLERANCES EXCEPT AS NOTED		<div>3M</div> <div>3M Center St. Paul, MN 55144</div> <div>© 3M. COPYR[IGHT] 2013 3M property and may not be reproduced or further distributed without 3M permission, or used or disclosed other than for 3M authorized purposes. All rights reserved.</div>							
		THIRD ANGLE PROJECTION		INCHES 0 ±.00 ±.002 ±.0000									
INTERPRET PER ASME Y14.5 - 1994		MILLIMETERS 0 ±.1 ±.00 ±.05 ±.0005		TITLE 8RXX-X00X D-SUB SOLDER CUP SOCKET TS-2402									
MAX SURFACE ROUGHNESS 125 ✓ □ ALL SURFACES ✗ MARKED ONLY		ANGLES ±.1°											
CAGE NUMBER		SIZE		DRAWING NO.		REV.							
D		78-5100-2402-5		C									
MODEL		BR		DET		LISTS		YES		NO		SHT 2 OF 2	

Mouser Electronics

Authorized Distributor

Click to View Pricing, Inventory, Delivery & Lifecycle Information:

3M:

[8R09-N001](#) [8R37-N001](#) [8R15-N001](#) [8R25-N001](#)