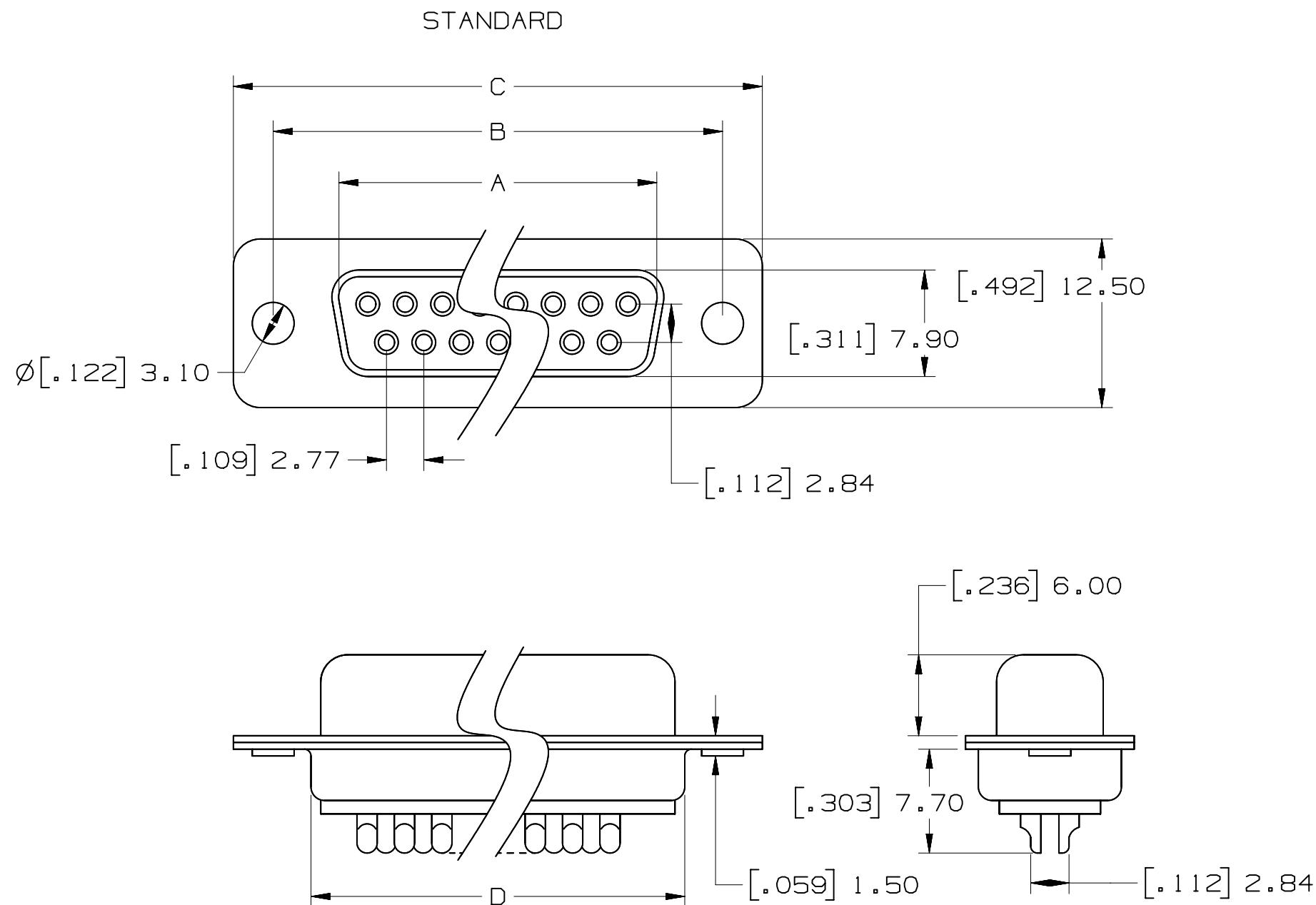


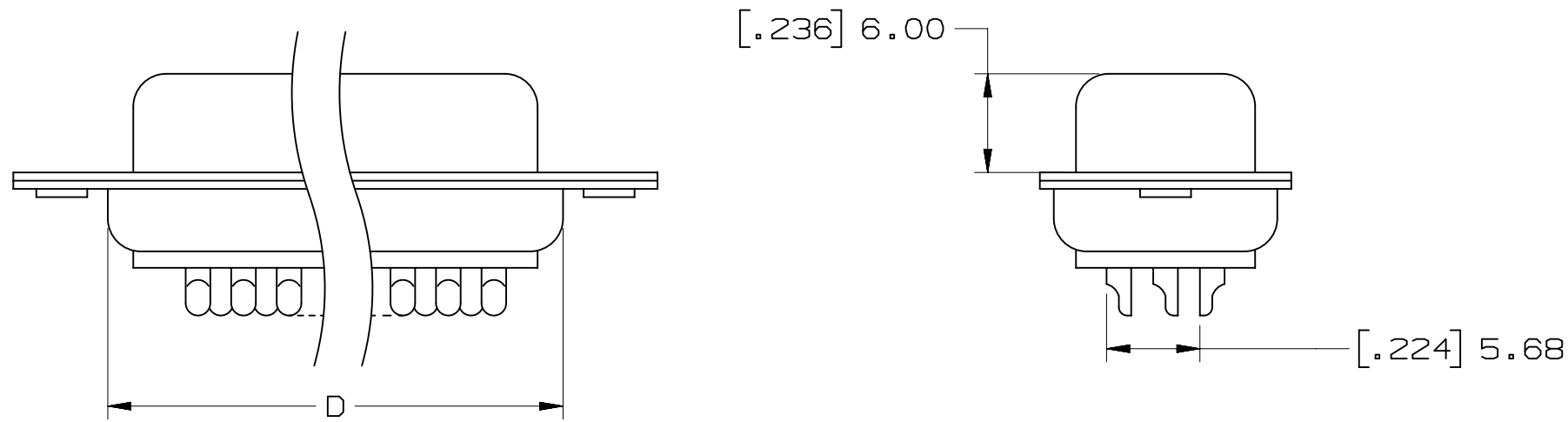
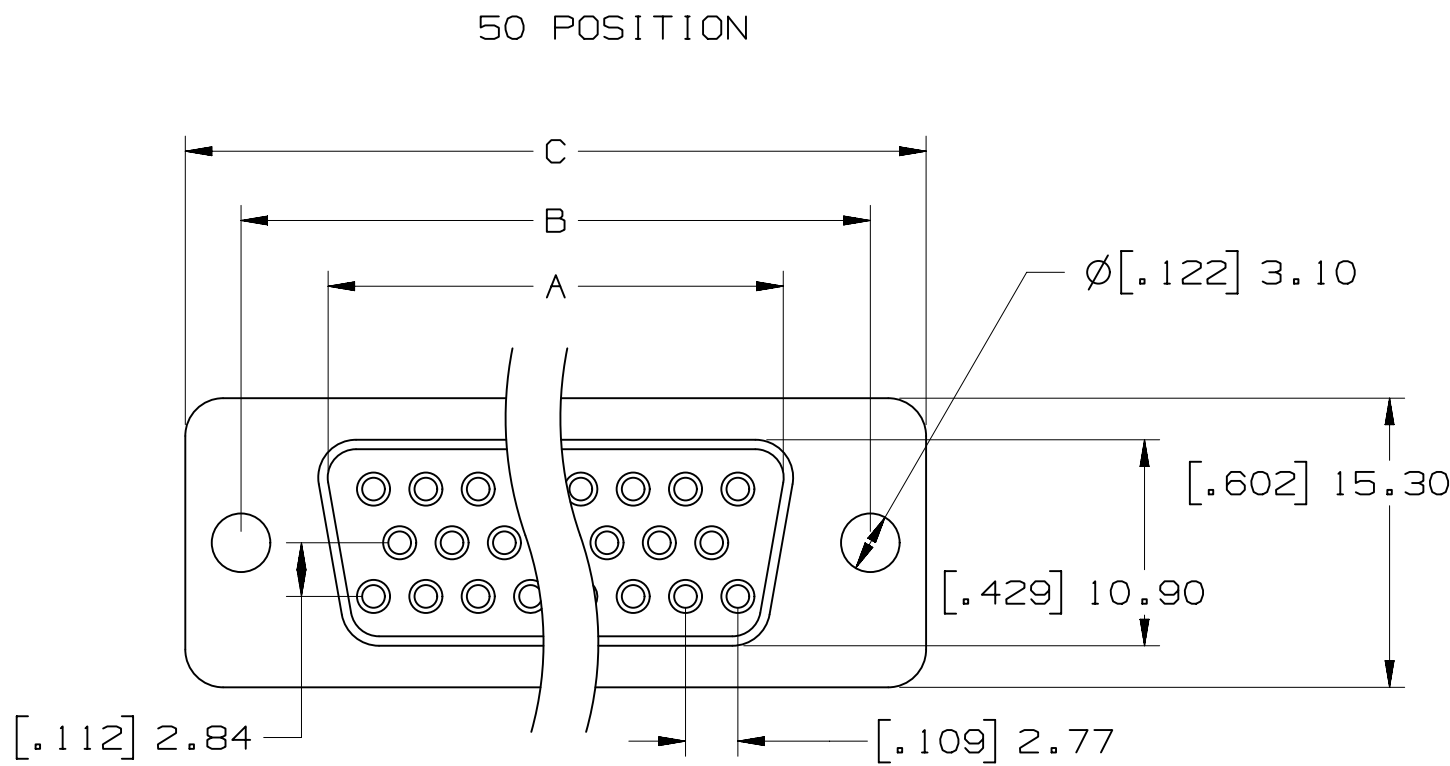
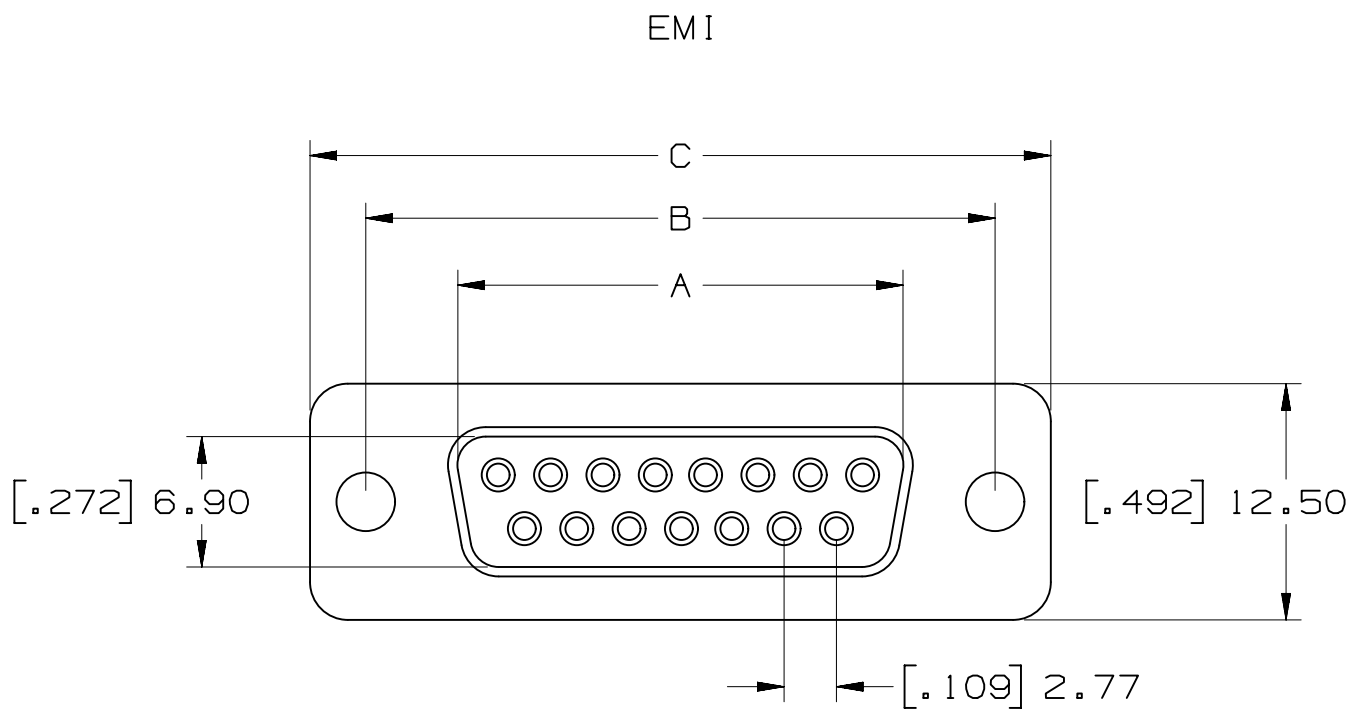
3M™ Solder Cup D Sub Socket, 8000 Series



POSITION	A	B	C	D
9	[.642] 16.30	[.984] 25.00	[1.213] 30.80	[.756] 19.20
15	[.969] 24.60	[1.311] 33.30	[1.543] 39.20	[1.091] 27.70
25	[1.508] 38.30	[2.248] 57.10	[2.091] 53.10	[1.618] 41.10
37	[2.157] 54.80	[2.500] 63.50	[2.732] 69.40	[2.256] 57.30
50*	[2.055] 52.20	[2.402] 61.00	[2.638] 67.00	[2.169] 55.10

*50 POSITION AVAILABLE IN STANDARD ONLY

PERFORMANCE	
OPERATION VOLTAGE:	250V MAX.
CURRENT:	3A MAX.
INSULATION RESISTANCE:	3000 MOhm MIN @ 500VDC
WITHSTANDING VOLTAGE:	1000 VAC / MIN.
TEMPERATURE RATING:	-55°C to 105°C
CONTACT RESISTANCE:	15 mOhms MAX.



8RXX-X00X

NUMBER OF CONTACTS
(SEE TABLE)

PLATING
1 - AU FLASH
2 - 30μ" AU

EMI
N - STANDARD
E - EMI

Unless otherwise noted, references to industry specifications are intended to indicate substantial compliance to the material elements of the specification. Such references should not be construed as a guarantee of compliance to all requirements in a given specification.

3M ELECTRONIC SOLUTIONS DIVISION
INTERCONNET SOLUTIONS
<http://www.3mconnectors.com>

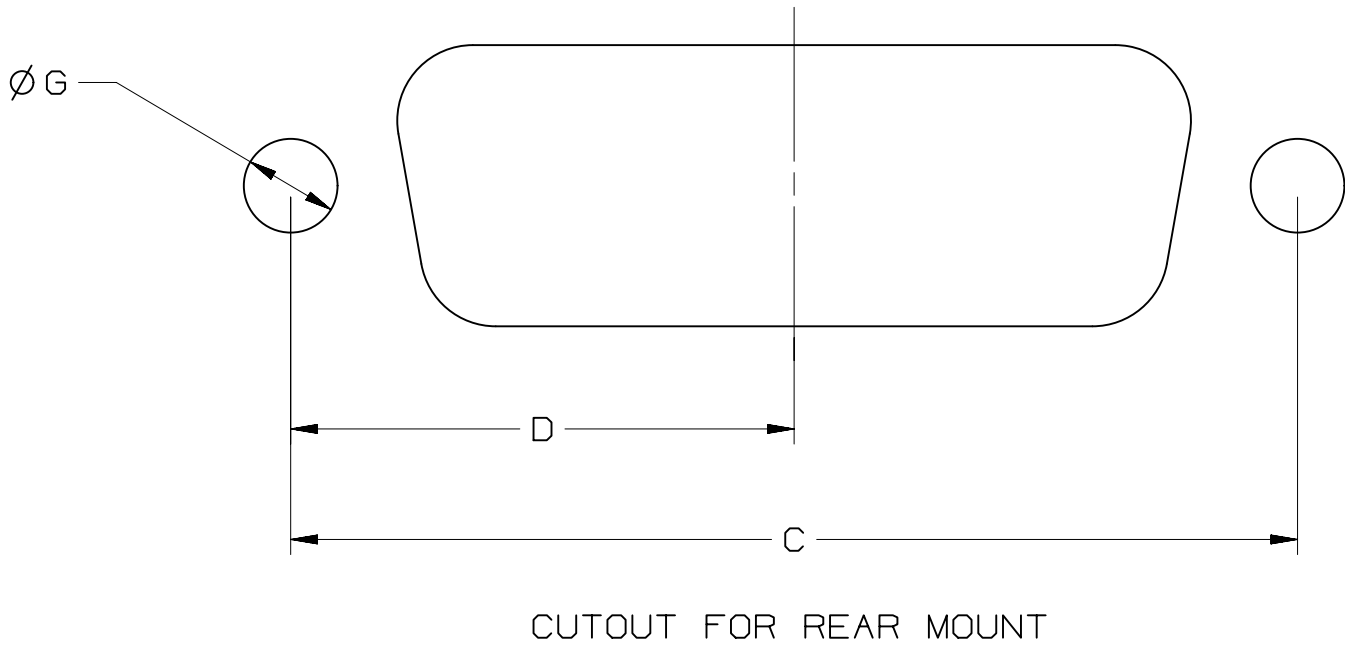
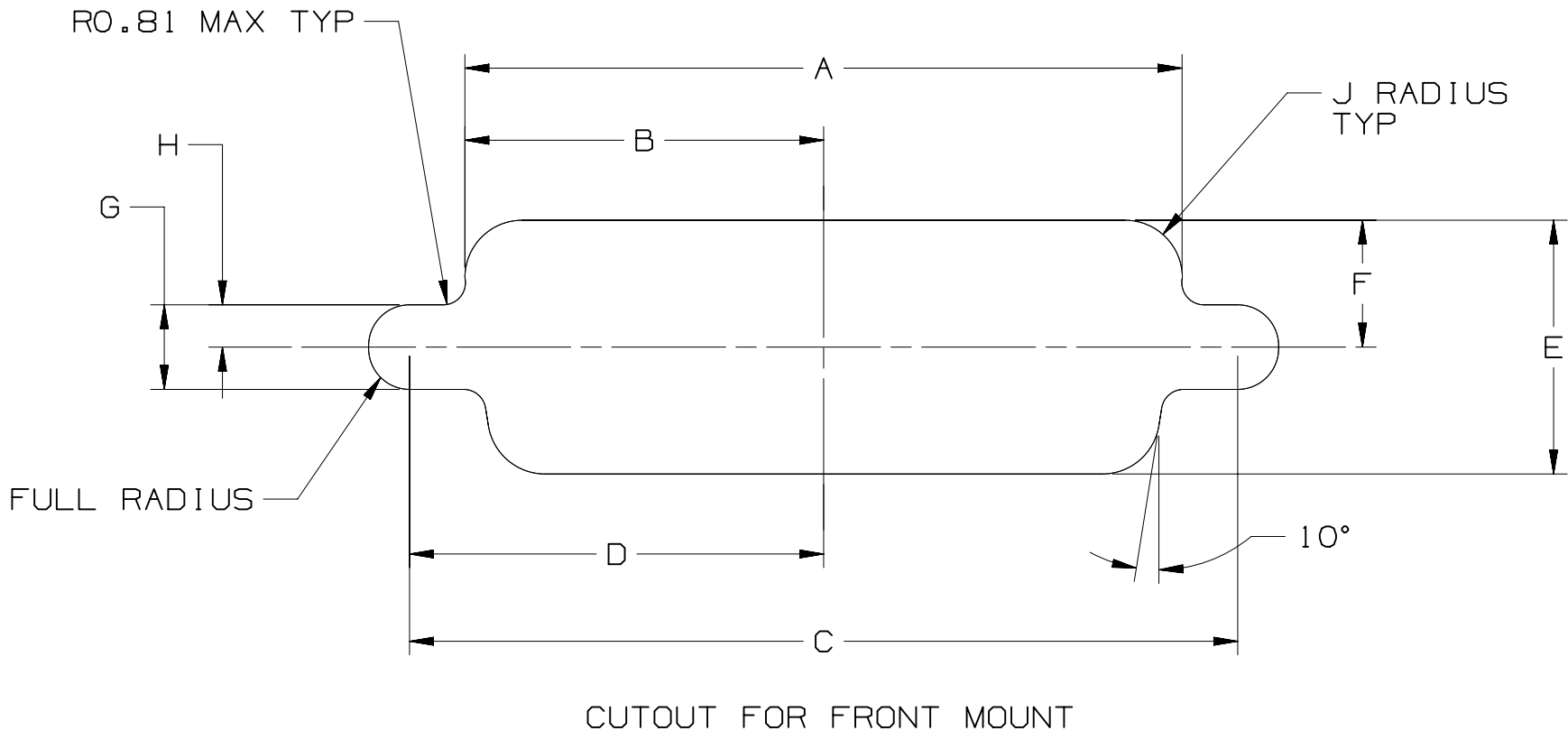
3M IS A TRADEMARK OF 3M COMPANY.
FOR TECHNICAL, SALES OR ORDERING
INFORMATION, CALL 800-225-5373

NOTES

- 1 MATERIAL:
THERMAL PLASTIC UL94V-0
CONTACTS:
COPPER ALLOY
SHELL:
G3141 SPCC OR EQUIVALENT
- 2 PLATING:
50μ" NICKEL UNDERPLATE
1μ" AU WIPING AREA OR
30μ" AU WIPING AREA
100-200μ" TIN (BRIGHT TIN) SOLDER TAIL
- 3 MATES WITH:
BPXX-X00X
- 4 SEE THE REGULATORY INFORMATION
APPENDIX (RIA) IN "RoHS"
COMPLIANCE SECTION OF
WWW.3MCONNECTOR.COM FOR
COMPLIANCE INFORMATION
(RIA E1 & C1 APPLY)

DESIGN REFERENCE		NEXT ASSEMBLY		REV	ECO	ISSUE DATE AND DESCRIPTION		DRFT	CHKD
3M	8000			SJS		MAY 18, 2011	MFG		DATE
				ARM		MAY 18, 2011	APPL		DATE
DIVISION		DIVISION CODE		© 3M COPYR[IGHT] 2013					
DO NOT SCALE DRAWING		SCALE 1/1		TOLERANCES EXCEPT AS NOTED		3M			
THIRD ANGLE PROJECTION		INCHES		MILLIMETERS		TITLE			
INTERPRET PER ASME Y14.5 - 1994		0 ± .000 ± .0000 ±		0 ± .000 ± .0000 ±		8RXX-X00X D-SUB SOLDER CUP SOCKET TS-2402			
MAX SURFACE ROUGHNESS 125/		ALL SURFACES		ANGLES ± 1°		CAGE NUMBER D			
✓ MARKED ONLY						DRAWING NO. 78-5100-2402-5			
						REV. C			
						MODEL BR			
						SHT 1 OF 2			

POSITION	MOUNTING METHOD	A	B	C	D	E	F	G	H	J
9	FRONT	.874[22.2]	.437[11.1]	.984[25.0]	.492[12.5]	.513[13.0]	.257[6.5]	.120[3.1]	.060[1.5]	.083[2.1]
	REAR	.806[20.5]	.403[10.2]	.984[25.0]	.492[12.5]	.449[11.4]	.225[5.7]	.120[3.1]	.060[1.5]	.132[3.4]
15	FRONT	1.202[30.5]	.601[15.3]	1.312[33.3]	.656[16.7]	.513[13.0]	.257[6.5]	.120[3.1]	.060[1.5]	.083[2.1]
	REAR	1.134[28.8]	.567[14.4]	1.312[33.3]	.656[16.7]	.449[11.4]	.225[5.7]	.120[3.1]	.060[1.5]	.132[3.4]
25	FRONT	1.743[44.3]	.872[22.2]	1.852[47.0]	.926[23.5]	.513[13.0]	.257[6.5]	.120[3.1]	.060[1.5]	.083[2.1]
	REAR	1.674[42.5]	.837[21.3]	1.852[47.0]	.926[23.5]	.449[11.4]	.225[5.7]	.120[3.1]	.060[1.5]	.132[3.4]
37	FRONT	2.391[60.7]	1.196[30.4]	2.500[63.5]	1.250[31.8]	.513[13.0]	.257[6.5]	.120[3.1]	.060[1.5]	.083[2.1]
	REAR	2.326[59.1]	1.163[29.5]	2.500[63.5]	1.250[31.8]	.449[11.4]	.225[5.7]	.120[3.1]	.060[1.5]	.132[3.4]
50	FRONT	2.297[58.3]	1.149[29.2]	2.406[61.1]	1.203[30.6]	.623[15.8]	.312[7.9]	.120[3.1]	.060[1.5]	.083[2.1]
	REAR	2.218[56.3]	1.109[28.2]	2.406[61.1]	1.203[30.6]	.555[14.1]	.278[7.1]	.120[3.1]	.060[1.5]	.132[3.4]



DESIGN REFERENCE		NEXT ASSEMBLY		REV	ECO	ISSUE DATE AND DESCRIPTION		DRFT	CHKD
XREF CODES				DRP	SJS	DATE	MAY 18, 2011	MFG	DATE
				CHKD	ARM	DATE	MAY 18, 2011	APPL	DATE
DIVISION		DIVISION CODE		© 3M. COPYR[IGHT] 2013					
DO NOT SCALE DRAWING		SCALE 1 1		TOLERANCES EXCEPT AS NOTED		3M Center St. Paul, MN 55144			
THIRD ANGLE PROJECTION		INCHES .00 .000 .0000 ±		MILLIMETERS 0 ±.1 .0 ±.05 .000 ±.005		TITLE 8RXX-X00X D-SUB SOLDER CUP SOCKET TS-2402			
INTERPRET PER ASME Y14.5 - 1994		MAX SURFACE ROUGHNESS 125 / ALL SURFACES MARKED ONLY		CAGE NUMBER D		SIZE 78-5100-2402-5		REV. C	
		ANGLES ±.1 °		MODEL BR		DET. []		YES [] NO [] SHT 2 OF 2	

Mouser Electronics

Authorized Distributor

Click to View Pricing, Inventory, Delivery & Lifecycle Information:

3M:

[8R37-E002](#) [8R09-E001](#) [8R25-E002](#) [8R25-E001](#) [8R37-E001](#) [8R15-N002](#) [8R50-N001](#) [8R15-E001](#) [8R25-N002](#)
[8R50-N002](#) [8R15-E002](#) [8R09-N002](#) [8R09-E002](#) [8R37-N002](#)