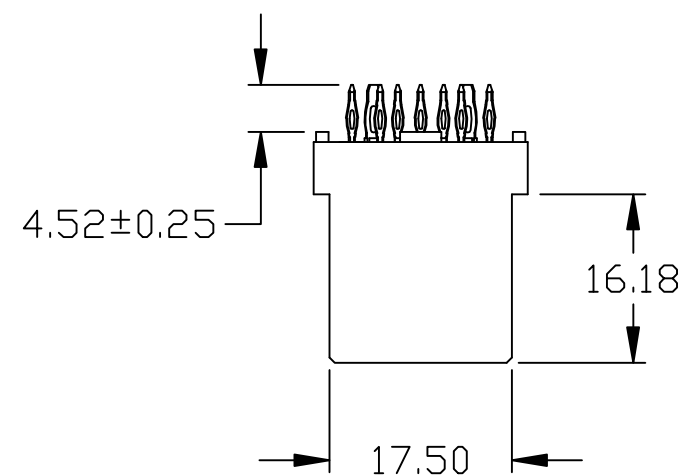
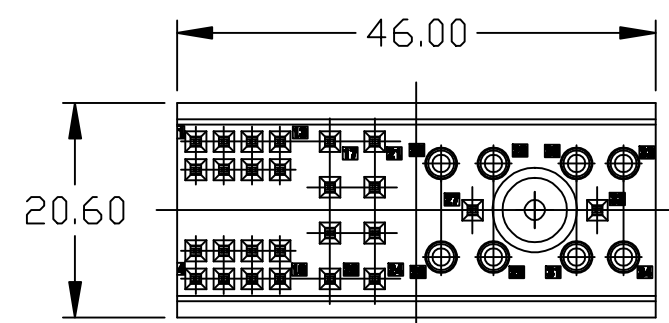


3M™ POWER BACKPLANE FEMALE CONNECTOR
FOR ATCA APPLICATIONS



NOTES:
1. MATERIALS AND FINISH:
INSULATOR: GLASS FILLED POLYESTER (PBT) UL94V-0
CONTACTS: COPPER ALLOY

2. PLATING:
-ES
FINISH: 0.76um MIN Au
UNDERCOAT: 1.27um MIN Ni
-G
FINISH: 0.25um MIN Au
UNDERCOAT: 1.27um MIN Ni
-DA
FINISH: 0.08um MIN Au
UNDERCOAT: 1.27um MIN Ni

3. ELECTRICAL CHARACTERISTICS
INSULATION RESISTANCE --- 5 X 10⁹ OHMS
INITIAL CONTACT RESISTANCE
POWER CONTACT ----- 2.2 MILLIOHMS MAX
SIGNAL CONTACT ----- 8.5 MILLIOHMS MAX
VOLTAGE PROOF
PIN 1-16: 1000 VR.M.S
PIN 17-34: 2000 VR.M.S
CURRENT CARRYING CAPACITY
SIGNAL PINS: 1A
POWER PINS: 16A

4. SEE THE REGULATORY INFORMATION APPENDIX
(RIA) IN THE "RoHS COMPLIANCE" SECTION
OF: WWW.3MCONNECTOR.COM FOR COMPLIANCE
INFORMATION (RIA E1 & C1 APPLY).

5. REFERENCE DOCUMENT: 78-9101-3345-9

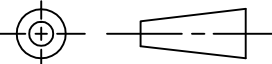
6. IN THE EVENT OF CONFLICT BETWEEN THIS DATA
AND THAT CONTAINED IN THE PRODUCT SPEC.,
THE PRODUCT SPEC. TAKES PRECEDENT.

7. PART No:	PART DESCRIPTION	CONTACT POSITIONS
	2P02-0100-XX	34
	2P02-0200-XX	30, EXCEPT POSITIONS 1-4
	2P02-0300-XX	22, EXCEPT POSITIONS 1-4, 17-24

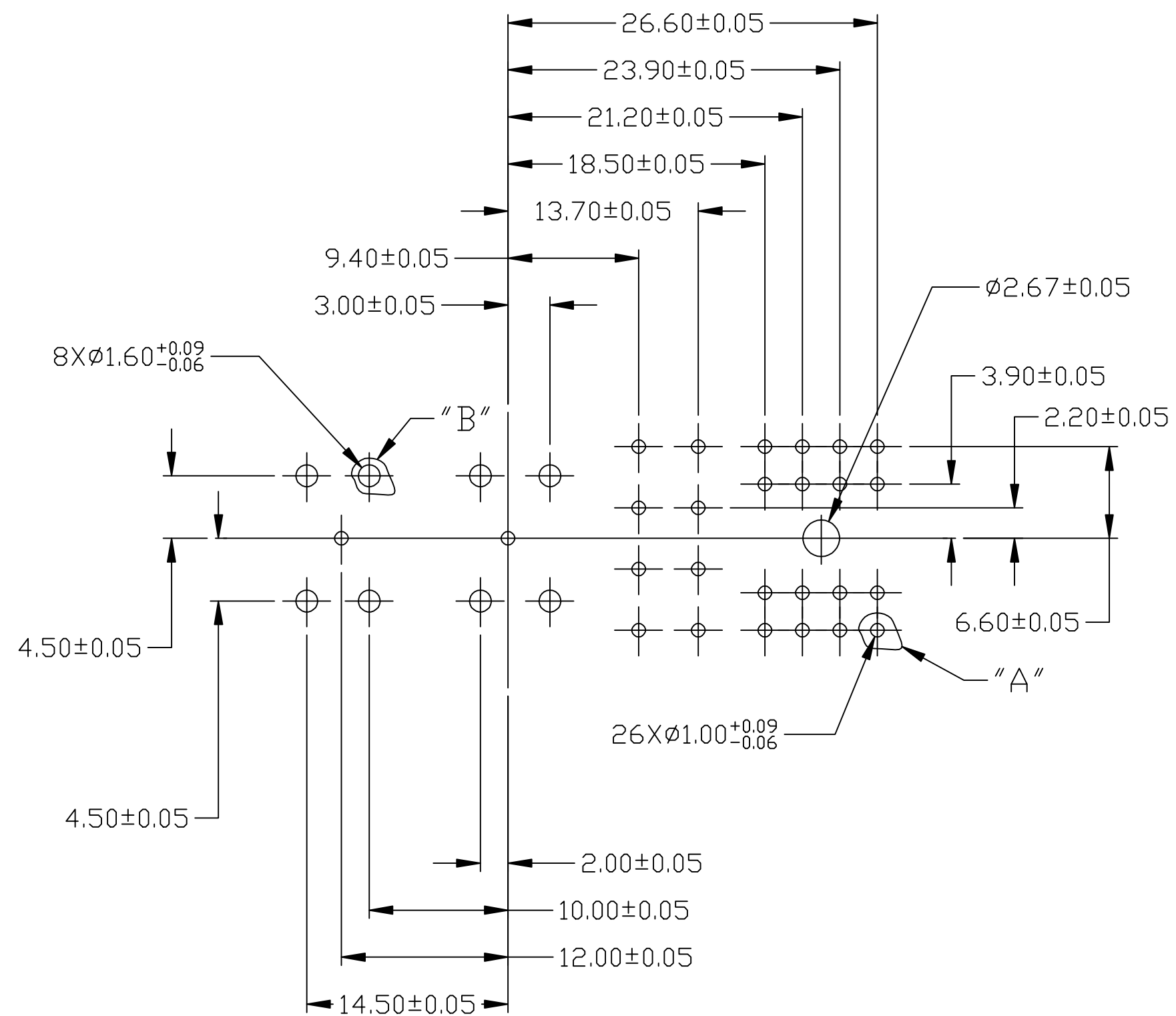
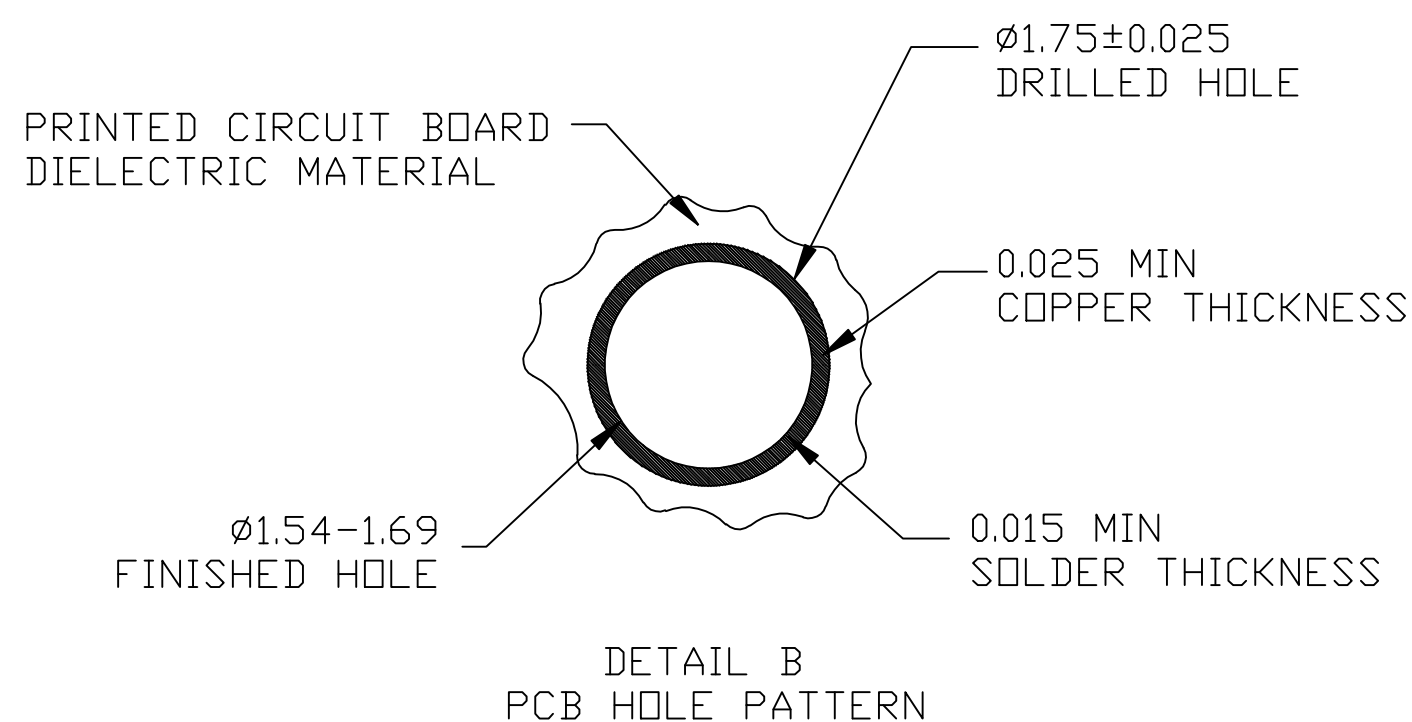
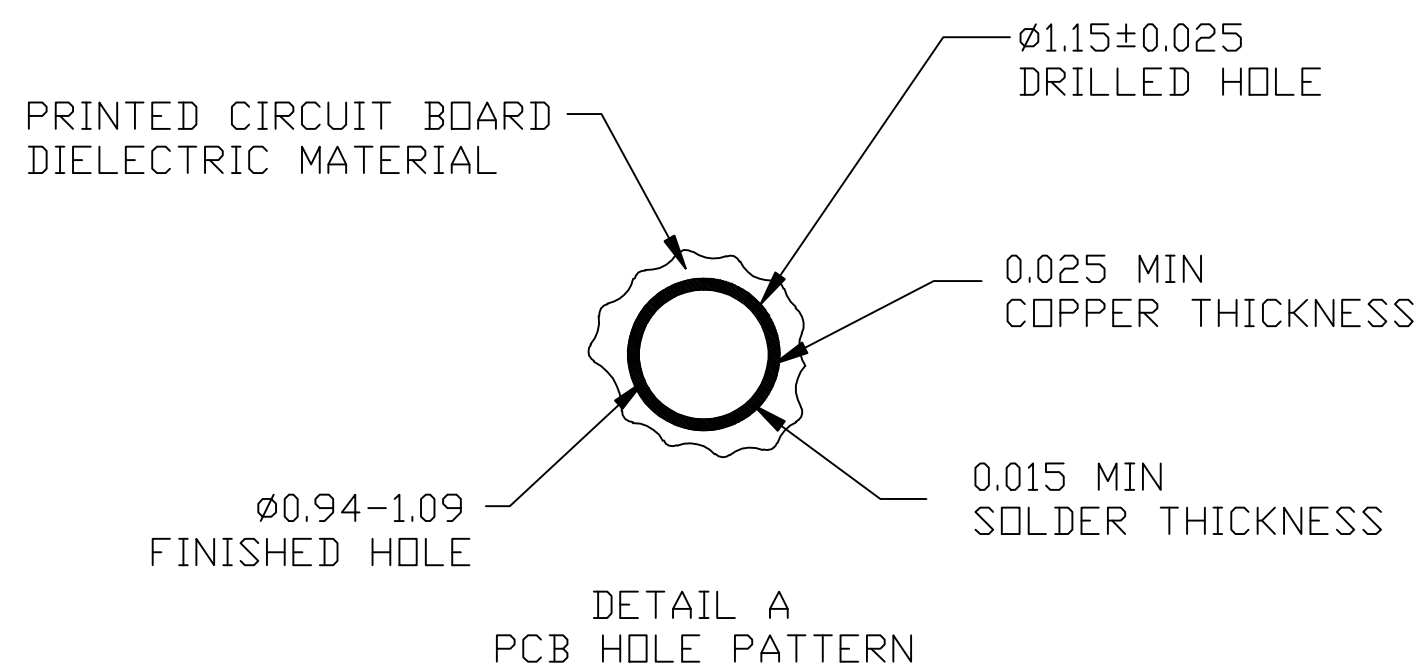
-XX IS PLATING TYPE

8. FOR MATING PRODUCT USE:
2P01-0X00-XX ATCA POWER RIGHT ANGLE
MALE CONNECTOR

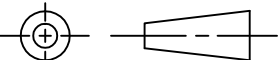
9. PCB THICKNESS: MINIMUM:2.00MM
MAXIMUM:5.00MM

DESIGN REFERENCE				NEXT ASSEMBLY				REV	ECO	ISSUE DATE AND DESCRIPTION				DRFT	CHKD
DISTRIBUTION CODES								DRFT	Peter	DATE	12/8/06	MFG		DATE	
								CHKD	Seawen	DATE	12/8/06	APPL		DATE	
DIVISION						DIVISION CODE						<div><div>3M</div><div>3M Center St. Paul, MN 55144</div></div> <div>© 3M COPYRIGHT This document is the copyrighted property of the 3M Company and may not be reproduced without 3M written permission or used for other than 3M authorized purposes.</div>			
DO NOT SCALE DRAWING		SCALE		TOLERANCES EXCEPT AS NOTED											
						INCHES						TITLE 2P02-0X00-XX ATCA POWER BACKPLANE CONNECTOR			
						.0 ± * .00 ± * .000 ± * .0000 ± *									
THIRD ANGLE PROJECTION						MILLIMETERS						CAGE NUMBER SIZE C DRAWING NO. 78-5100-2378-7 REV. A			
INTERPRET PER ASME Y14.5 - 1994						.0 ± 0.30 .00 ± 0.20 .000 ± 0.10									
MAX SURFACE ROUGHNESS						ANGLES ± 1°						MODEL			
<input type="checkbox"/> ALL SURFACES <input checked="" type="checkbox"/> MARKED ONLY												DET. LISTS <input type="checkbox"/> YES <input checked="" type="checkbox"/> NO			
												SHT 1 OF 2			

3M™ POWER BACKPLANE FEMALE CONNECTOR
FOR ATCA APPLICATIONS



RECOMMENDED PC BOARD REQUIREMENTS
(COMPONENT SIDE OF BOARD SHOWN)

DESIGN REFERENCE				NEXT ASSEMBLY				REV	ECO	ISSUE DATE AND DESCRIPTION		DRFT	CHKD
DISTRIBUTION CODES								DRFT	Peter	DATE 12/8/06	MFG	DATE	
								CHKD	Seawen	DATE 12/8/06	APPL	DATE	
DIVISION				DIVISION CODE				<div><div>3M</div><div>3M Center St. Paul, MN 55144</div></div> <div>© 3M COPYRIGHT This document is the copyrighted property of the 3M Company and may not be reproduced without 3M written permission or used for other than 3M authorized purposes.</div>					
DO NOT SCALE DRAWING		SCALE		TOLERANCES EXCEPT AS NOTED									
				INCHES .0 ± * .00 ± * .000 ± * .0000 ± *				TITLE 2P02-0X00-XX ATCA POWER BACKPLANE CONNECTOR					
THIRD ANGLE PROJECTION				MILLIMETERS 0 ± * .0 ± 0.30 .00 ± 0.20 .000 ± 0.10									
INTERPRET PER ASME Y14.5 - 1994								CAGE NUMBER	SIZE	DRAWING NO.	REV.		
MAX SURFACE ROUGHNESS <div><input checked="" type="checkbox"/> ALL SURFACES <input type="checkbox"/> MARKED ONLY</div>								C		78-5100-2378-7	A		
				ANGLES ± 1°				MODEL		DET. LISTS <input type="checkbox"/> YES <input type="checkbox"/> NO		SHT 2 OF 2	

Mouser Electronics

Authorized Distributor

Click to View Pricing, Inventory, Delivery & Lifecycle Information:

3M:

[2P02-0300-DA](#) [2P02-0100-DA](#) [2P02-0100-ES](#) [2P02-0200-DA](#)