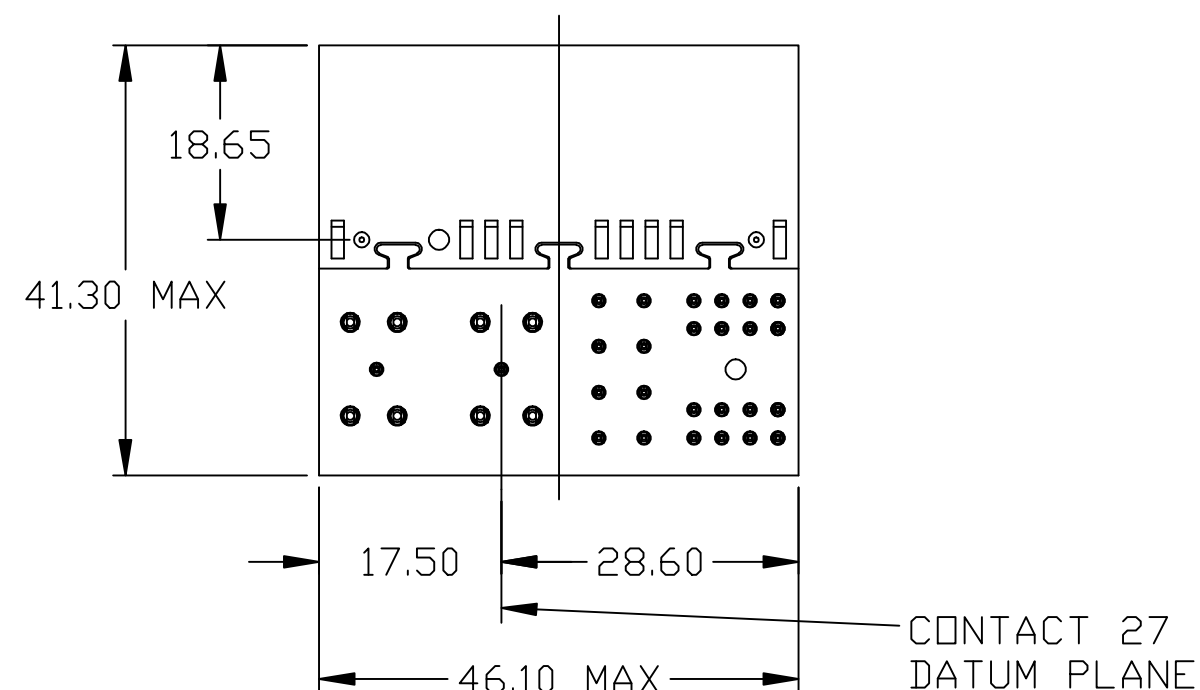
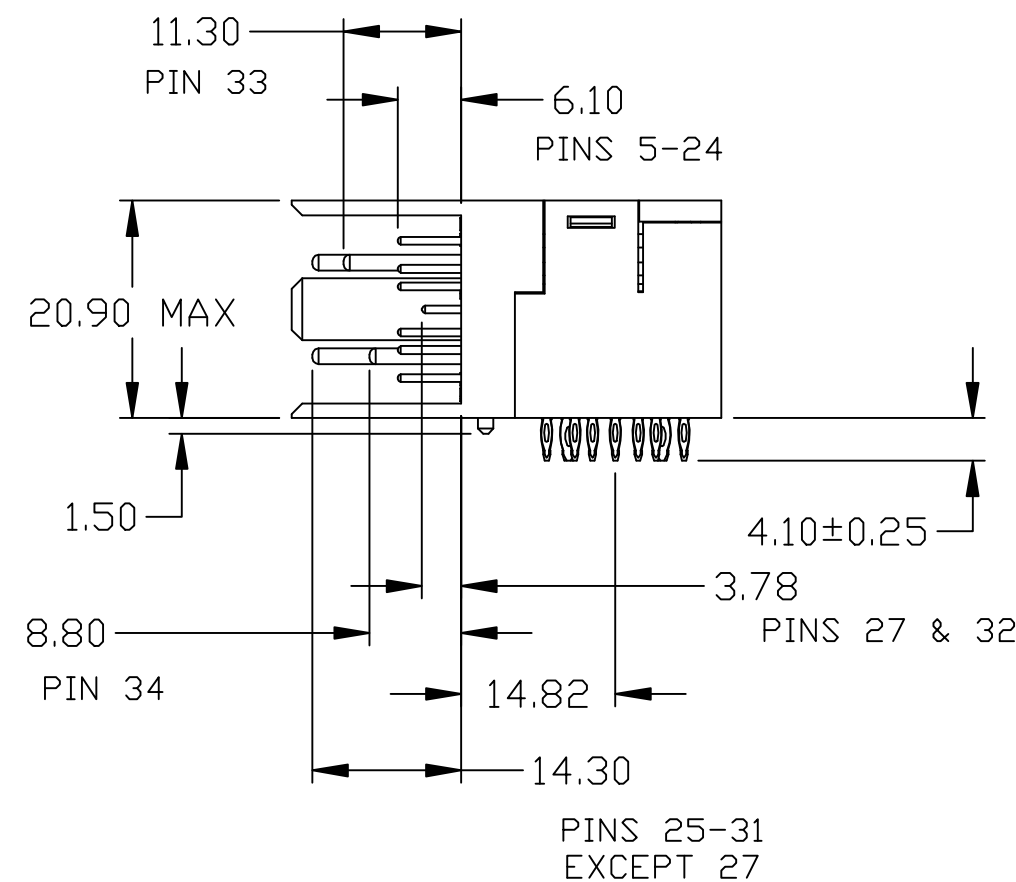
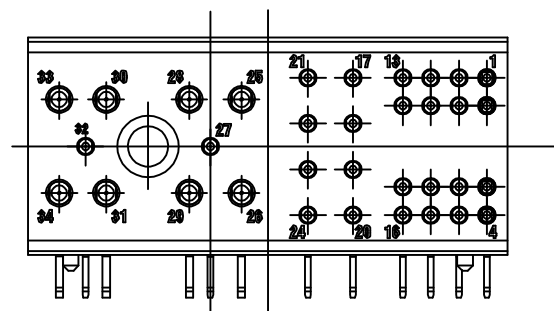


3M™ POWER RIGHT ANGLE MALE CONNECTOR
FOR ATCA APPLICATIONS



NOTES:
1. MATERIALS AND FINISH:
INSULATOR: GLASS FILLED POLYESTER (PBT) UL94V-0
CONTACTS: COPPER ALLOY

2. PLATING:
-ES
FINISH: 0.76um MIN Au
UNDERCOAT: 1.27um MIN Ni
-G
FINISH: 0.25um MIN Au
UNDERCOAT: 1.27um MIN Ni
-DA
FINISH: 0.08um MIN Au
UNDERCOAT: 1.27um MIN Ni

3. ELECTRICAL CHARACTERISTICS
INSULATION RESISTANCE --- 5×10^9 OHMS
INITIAL CONTACT RESISTANCE
POWER CONTACT ----- 2.2 MILLIOHMS MAX
SIGNAL CONTACT ----- 8.5 MILLIOHMS MAX
VOLTAGE PROOF
PIN 1-16: 1000 VR.M.S
PIN 17-34: 2000 VR.M.S
CURRENT CARRYING CAPACITY
SIGNAL PINS: 1A
POWER PINS: 16A

4. SEE THE REGULATORY INFORMATION APPENDIX
(RIA) IN THE "RoHS COMPLIANCE" SECTION
OF: WWW.3MCONNECTOR.COM FOR COMPLIANCE
INFORMATION (RIA E1 & C1 APPLY).

5. REFERENCE DOCUMENT: 78-9101-3345-9

6. IN THE EVENT OF CONFLICT BETWEEN THIS DATA
AND THAT CONTAINED IN THE PRODUCT SPEC.,
THE PRODUCT SPEC. TAKES PRECEDENT.

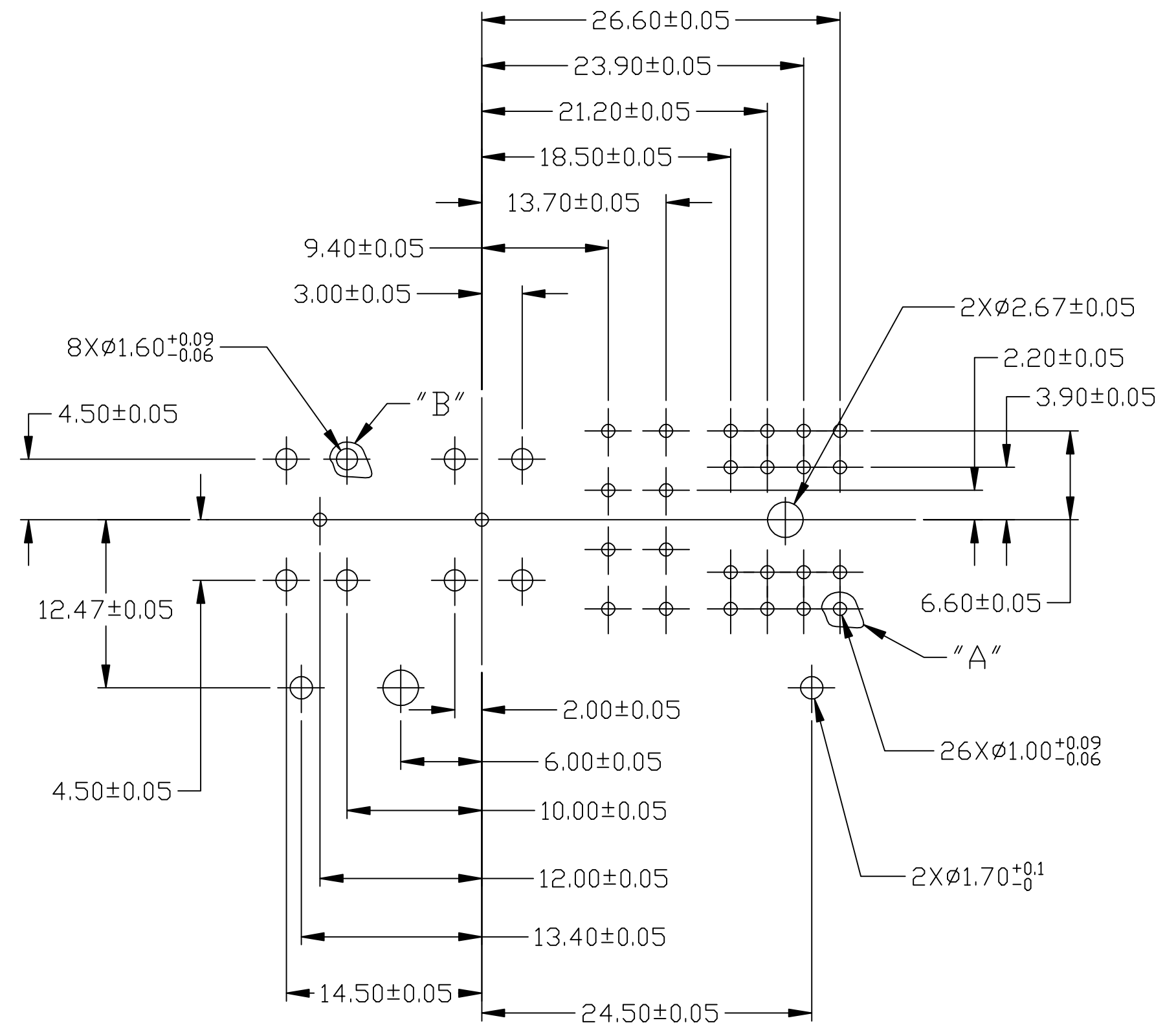
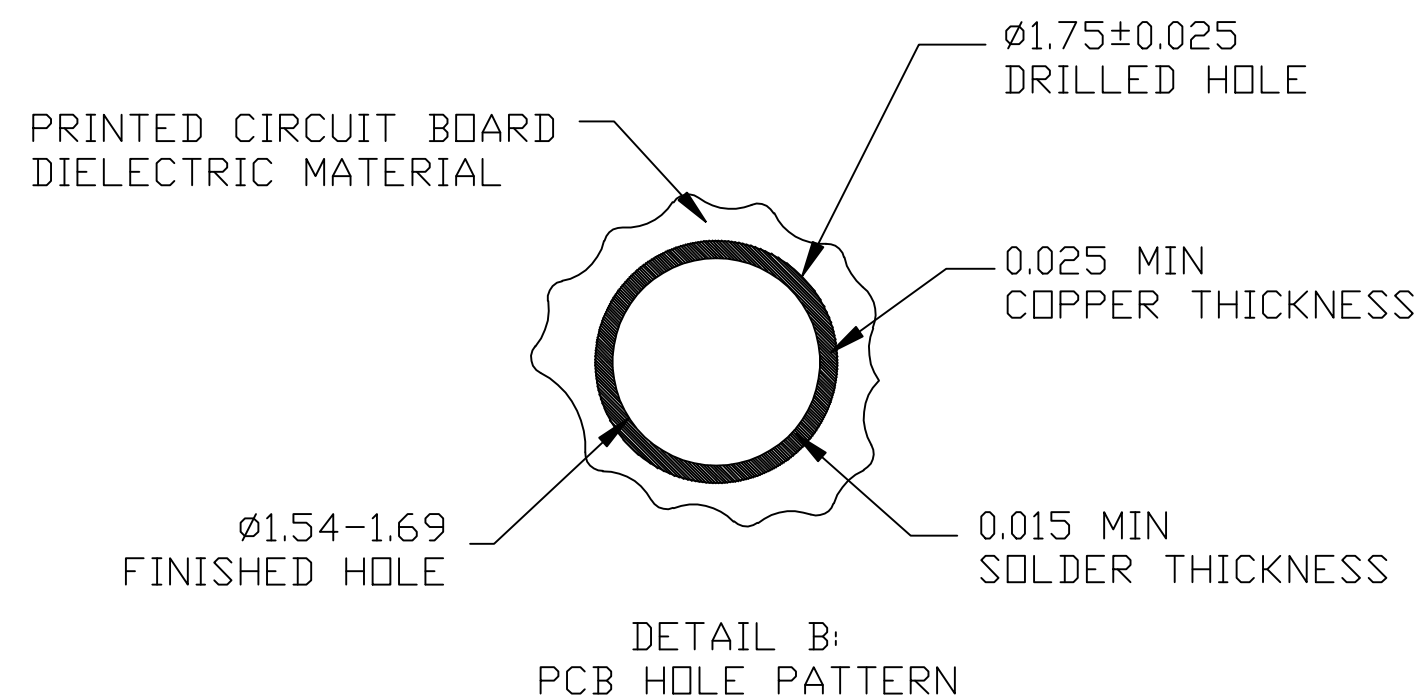
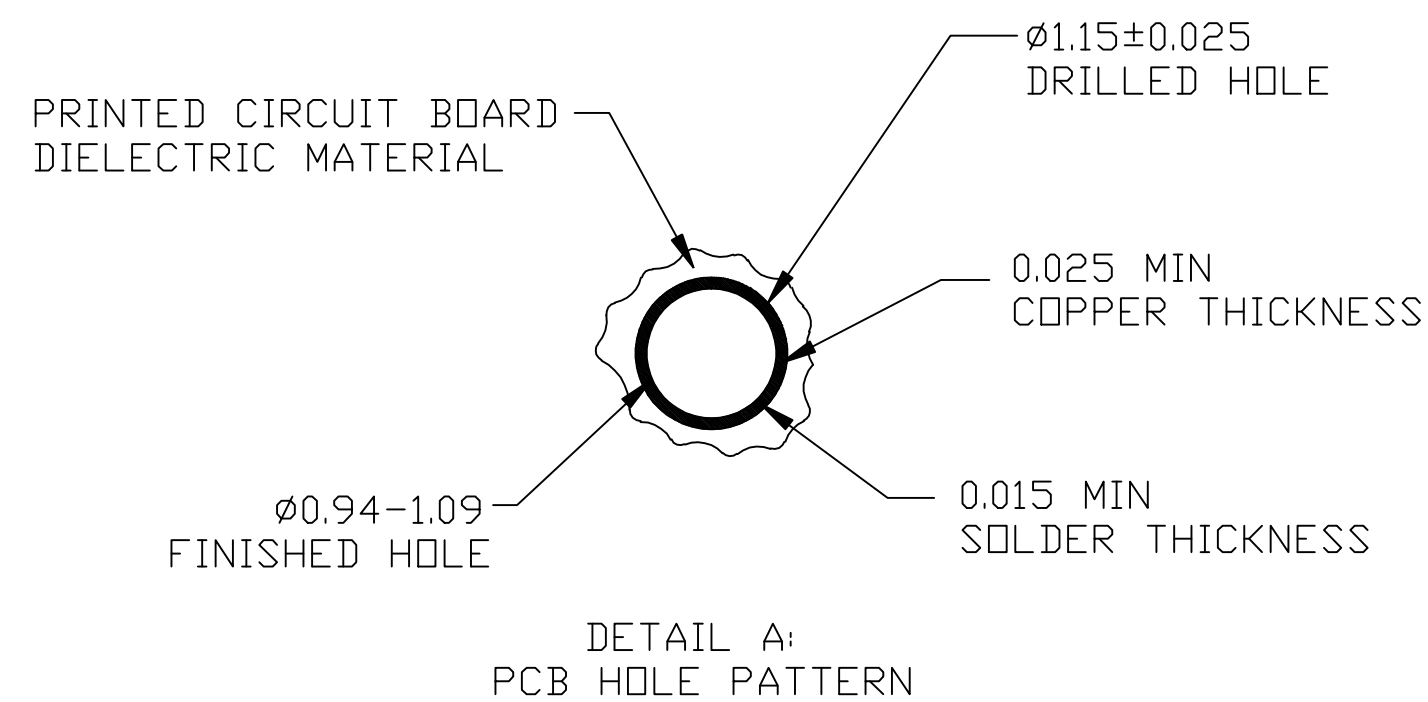
7. PART No.:	PART DESCRIPTION	CONTACT POSITIONS
	2P01-0100-XX	34
	2P01-0200-XX	30, EXCEPT POSITIONS 1-4
	2P01-0300-XX	22, EXCEPT POSITIONS 1-4, 17-24
-XX IS PLATING TYPE		

8. FOR MATING PRODUCT USE:
2P02-0X00-XX ATCA POWER BACKPLANE
FEMALE CONNECTOR

9. PCB THICKNESS: MINIMUM:2.00MM
MAXIMUM:5.00MM

DESIGN REFERENCE				NEXT ASSEMBLY				REV	ECO	ISSUE DATE AND DESCRIPTION				DRFT	CHKD
DISTRIBUTION CODES								DRFT	ML	DATE	1/10/11	MFG	DATE		
								CHKD	TS	DATE	1/10/11	APPL	DATE		
DIVISION						DIVISION CODE						<div><div><div>3M</div><div>3M Center St. Paul, MN 55144</div></div><div>© 3M COPYRIGHT This document is the copyrighted property of the 3M Company and may not be reproduced without 3M written permission or used for other than 3M authorized purposes.</div></div>			
DO NOT SCALE DRAWING		SCALE		TOLERANCES EXCEPT AS NOTED											
		THIRD ANGLE PROJECTION		INCHES		TITLE									
				.0 ± *											
				.00 ± *		2P01-0X00-XX									
				.000 ± *											
				.0000 ± *		ATCA POWER RIGHT ANGLE									
				MILLIMETERS		MALE CONNECTOR									
				0 ± *											
				.0 ± 0.30		CAGE NUMBER									
				.00 ± 0.20						SIZE					
				.000 ± 0.10		DRAWING NO.									
										78-5100-2376-1					
				ANGLES ± 1°		REV.									
										A					
				MODEL		DET. LISTS									
										SHT 1 OF 2					
						YES <input type="checkbox"/> NO <input type="checkbox"/>									

3M™ POWER RIGHT ANGLE MALE CONNECTOR FOR ATCA APPLICATIONS



RECOMMENDED PC BOARD REQUIREMENTS
(COMPONENT SIDE OF BOARD SHOWN)

DESIGN REFERENCE		NEXT ASSEMBLY		REV	ECO	ISSUE DATE AND DESCRIPTION		DRFT	CHKD
DISTRIBUTION CODES				DRFT	ML	DATE 1/10/11	MFG	DATE	
				CHKD	TS	DATE 1/10/11	APPL	DATE	
DIVISION		DIVISION CODE		3M 3M Center St. Paul, MN 55144		© 3M COPYRIGHT. This document is the copyrighted property of the 3M Company and may not be reproduced without 3M written permission or used for other than 3M authorized purposes.			
DO NOT SCALE DRAWING		SCALE		TOLERANCES EXCEPT AS NOTED		TITLE 2P01-0X00-XX ATCA POWER RIGHT ANGLE MALE CONNECTOR			
		THIRD ANGLE PROJECTION		INCHES .0 ± * .00 ± * .000 ± * .0000 ± *		CAGE NUMBER C			
INTERPRET PER ASME Y14.5 - 1994				MILLIMETERS 0 ± * .0 ± 0.30 .00 ± 0.20 .000 ± 0.10		DRAWING NO. 78-5100-2376-1		REV. A	
MAX SURFACE ROUGHNESS □ ALL SURFACES ✓ □ MARKED ONLY		ANGLES ± 1°		MODEL		DET. LISTS □ YES □ NO		SHT 2 OF 2	

Mouser Electronics

Authorized Distributor

Click to View Pricing, Inventory, Delivery & Lifecycle Information:

3M:

[2P01-0100-DA](#)