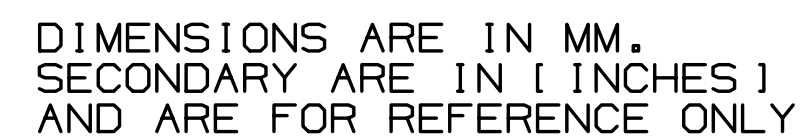
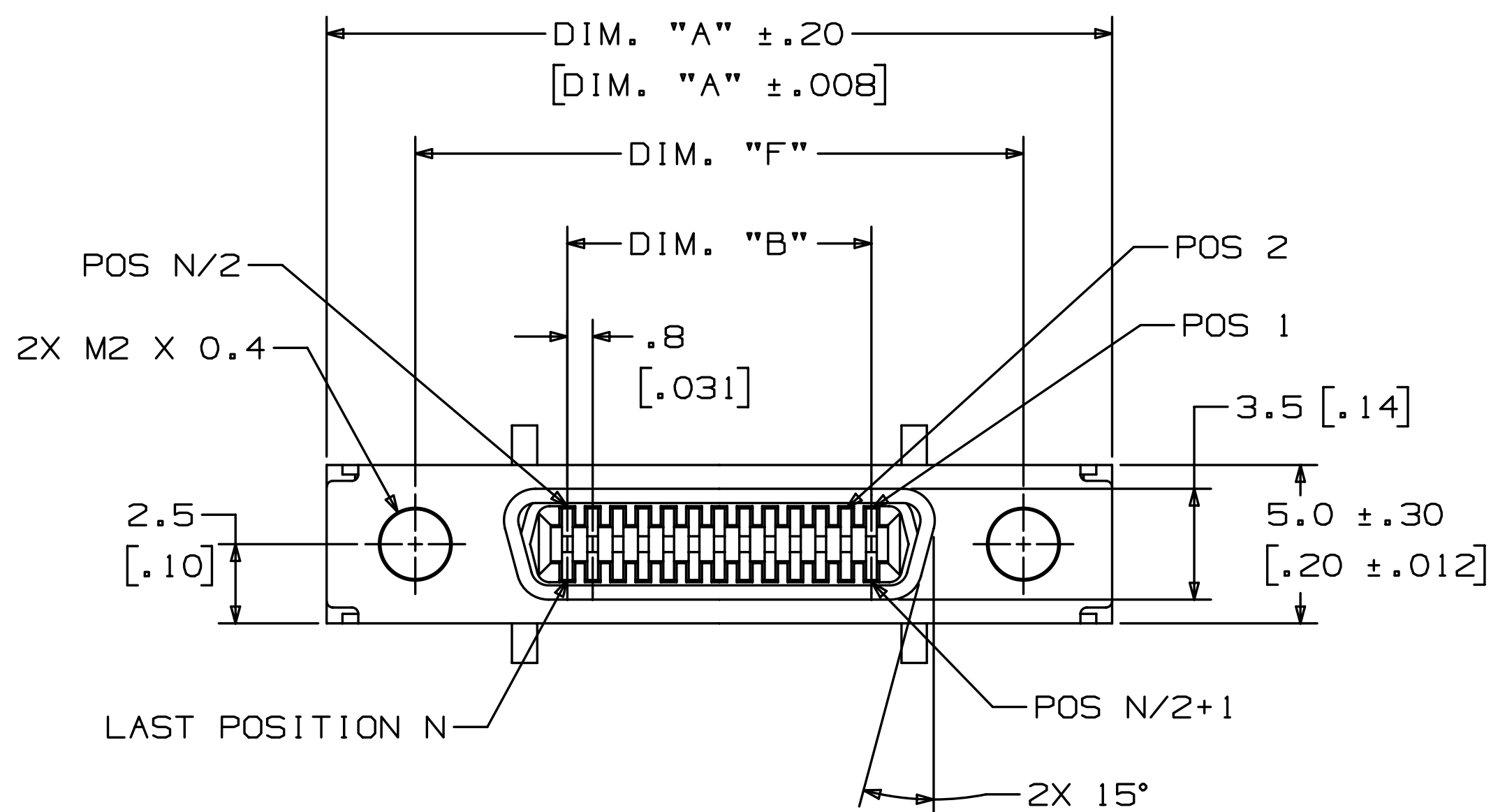


A

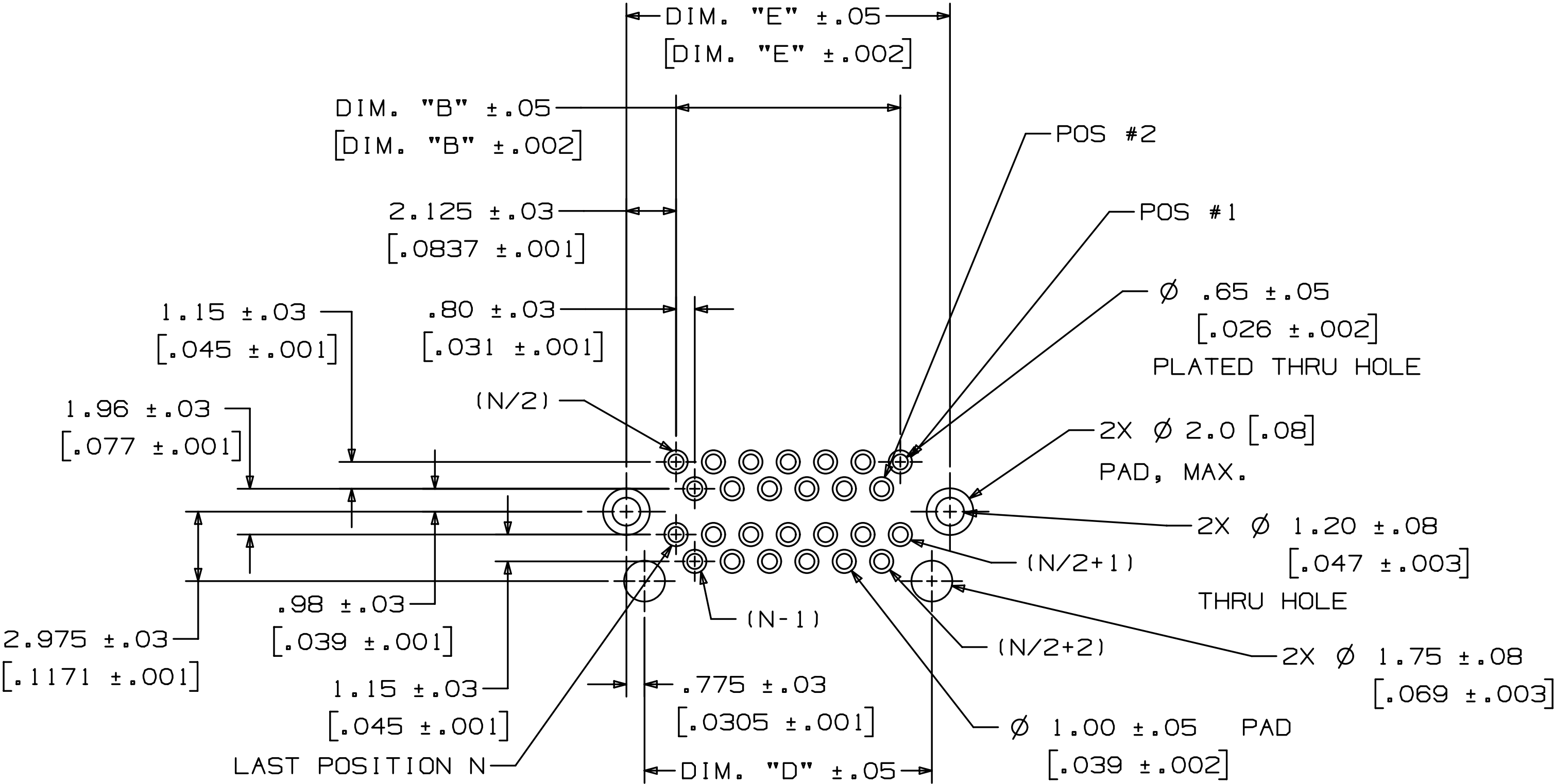


CONNECTOR DIMENSION TABLE TABLE 1

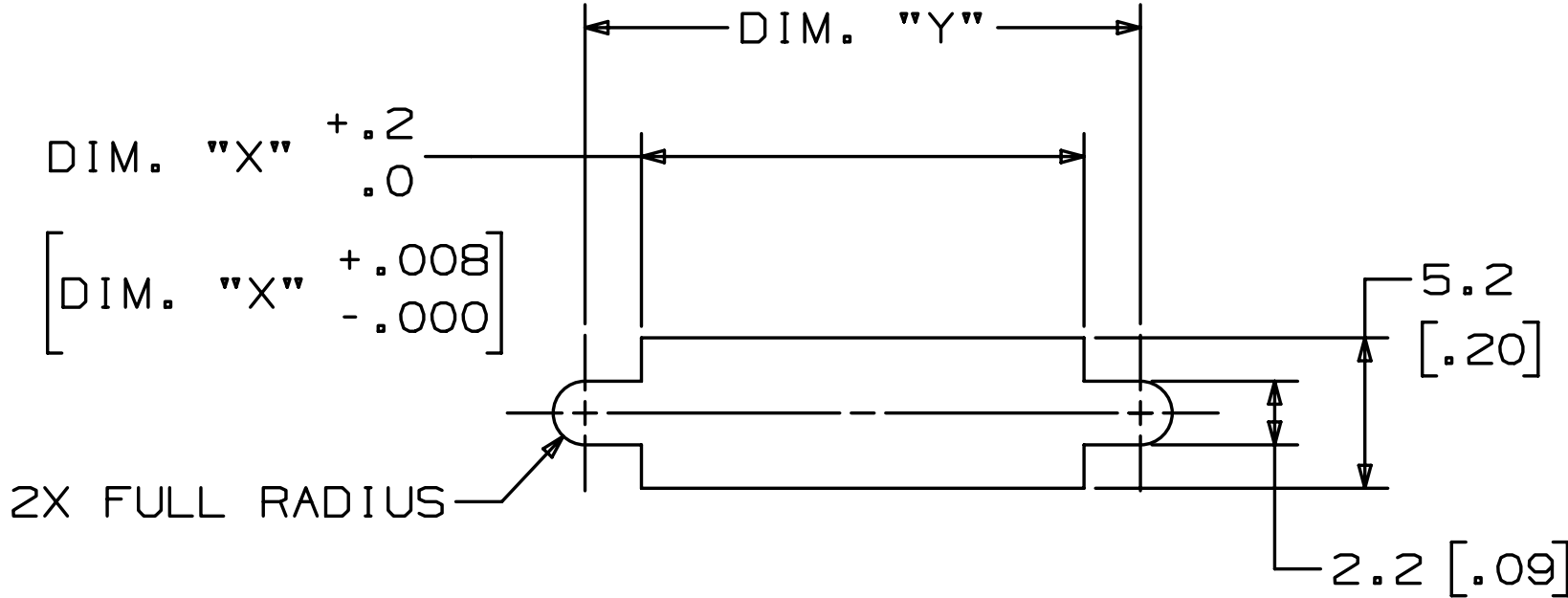
DIMENSIONS ARE IN MM. DIMENSIONS ARE IN [INCHES] REFERENCE FOR REFERENCE ONLY				D 30752		JAN 10, 2011		JNC		SC	
DESIGN REFERENCE				NEXT ASSEMBLY		REV ECO		ISSUE DATE AND DESCRIPTION		DRFT CHKD	
DISTRIBUTION CODES				REV CASTIGLIONE		DATE JAN 10, 2011		INFO		DATE	
DIVISION				DIVISION CODE		CHKD		APPR. D. CRONCH		DATE MAR 29, 2011	
Interconnect Solutions				152		3M		3M Center St. Paul, MN 55144		© 3M COPYRIGHT 2011 This document and information contained herein are 3M property and may not be reproduced or further disseminated without the prior written permission of 3M. All rights reserved.	
DO NOT SCALE DRAWING		SCALE 6 I		TOLERANCES EXCEPT AS NOTED							
THIRD ANGLE PROJECTION		INCHES 0 + .000 ± .006 .000 ± .006 .0000 ± .005		MILLIMETERS 0 ± .00 ± .15 .00 ± .15 .000 ± .13		TITLE 3M SHRUNK DELTA RIBBON (SDR) CONN. 122XX-11X0-00FR					
INTERPRET PER ASME Y14.5 - 1994				CAGE NUMBER		SIZE		DRAWING NO.		REV.	
MAX SURFACE ROUGHNESS				D 1758-5100-00		122XX-1150-00		DEF		SHT 1 OF 2	
MAX SURFACES				MODEL		122XX-1150-00		DEF		SHT 1 OF 2	
MARKED ONLY				ANGLS		122XX-1150-00		DEF		SHT 1 OF 2	

UL
UL FILE NO: E68080

3M™ Shrunk Delta Ribbon (SDR) Connectors, 122 Series
.80 mm Boardmount, Through-Hole, Vertical Receptacle, Shielded



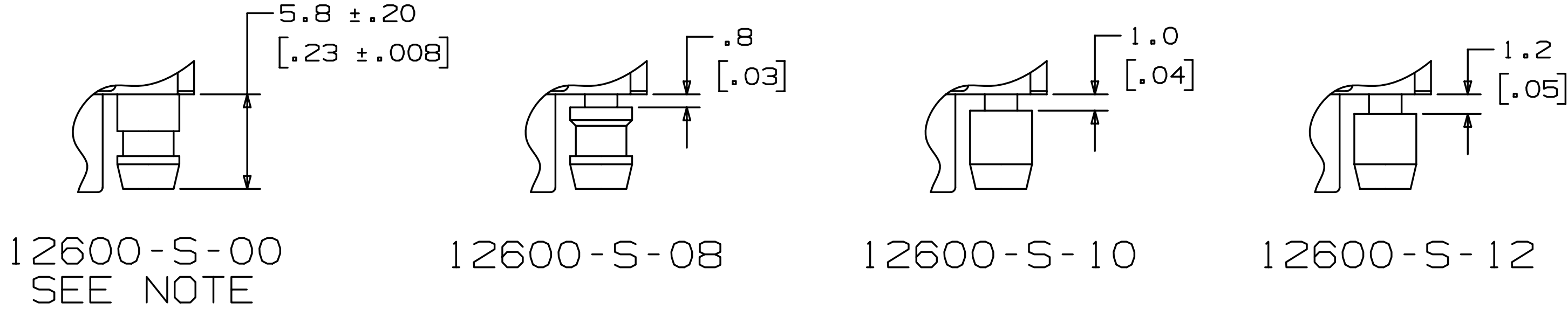
RECOMMENDED PC BOARD LAYOUT
(MOUNT SIDE VIEW)
N = TOTAL NUMBER OF POSITIONS
SCALE 6X



RECOMMENDED PANEL CUT-OUT
(MAXIMUM PANEL THICKNESS 1.2MM)

POSITION	DIM. "X"	DIM. "Y"
14	10.5 [.41]	14.4 [.57]
26	15.3 [.60]	19.2 [.76]

RECOMMENDED PANEL CUT-OUT DIMENSION TABLE
TABLE 2



JACKSOCKET
M2 X 0.4

NOTE: JACKSOCKET 12600-S-00 COMES FACTORY
INSTALLED IN CONNECTOR 122XX-1150-00FR.
IT IS FIXED WITH THREAD LOCKING ADHESIVE
AND CANNOT BE REMOVED.

PANEL THICKNESS	CONNECTOR	JACKSOCKET
NO PANEL	122XX-1150-00FR	FACTORY INSTALLED (SEE NOTE)
0.8±0.1MM	122XX-1100-00FR	12600-S-08 (ORDER SEPARATELY)
1.0±0.1MM	122XX-1100-00FR	12600-S-10 (ORDER SEPARATELY)
1.2±0.1MM	122XX-1100-00FR	12600-S-12 (ORDER SEPARATELY)

SELECTION TABLE FOR PANEL MOUNTING
TABLE 3

ORDERING INFORMATION:
122XX-11X0-00FR

CONTACT QUANTITY (SEE TABLE 1)
SCREW LOCK OPTION: (SEE TABLE 3)
0=NONE (RIA E1 & C1 APPLY)
5=WITH 12600-S-00 NON-REMOVABLE SCREW LOCK (RIA E5 & C3 APPLY)

DESIGN REFERENCE		NEXT ASSEMBLY		REV	ECO	ISSUE DATE AND DESCRIPTION		DRFT	CHKD
DISTRIBUTION CODES		DIVISION CODE		ECO	ECO	DATE	DATE	DATE	DATE
DIVISION		INTERCONNECT SOLUTIONS		ECO	ECO	DATE	DATE	DATE	DATE
DO NOT SCALE DRAWING		SCALE 4/1		TOLERANCES EXCEPT AS NOTED		THIS DOCUMENT AND THE INFORMATION IT CONTAINS ARE 3M PROPERTY AND MAY NOT BE REPRODUCED OR FURTHER DISTRIBUTED WITHOUT 3M PERMISSION, OR USED OR DISCLOSED OTHER THAN FOR 3M AUTHORIZED PURPOSES. ALL RIGHTS RESERVED.			
THIRD ANGLE PROJECTION		INTERPRET PER ASME Y14.5 - 1994		INCHES		3M SHRUNK DELTA RIBBON (SDR) CONN. 122XX-11X0-00FR			
MAX SURFACE ROUGHNESS		MARKED ONLY		MILLIMETERS		CAGE NUMBER D78-5100-2126-0			
MODEL		122XX-1150-00		LISTS		YES NO SHT 2 OF 2			

Mouser Electronics

Authorized Distributor

Click to View Pricing, Inventory, Delivery & Lifecycle Information:

3M:

[12214-1150-00FR](#) [12226-1150-00PL](#)