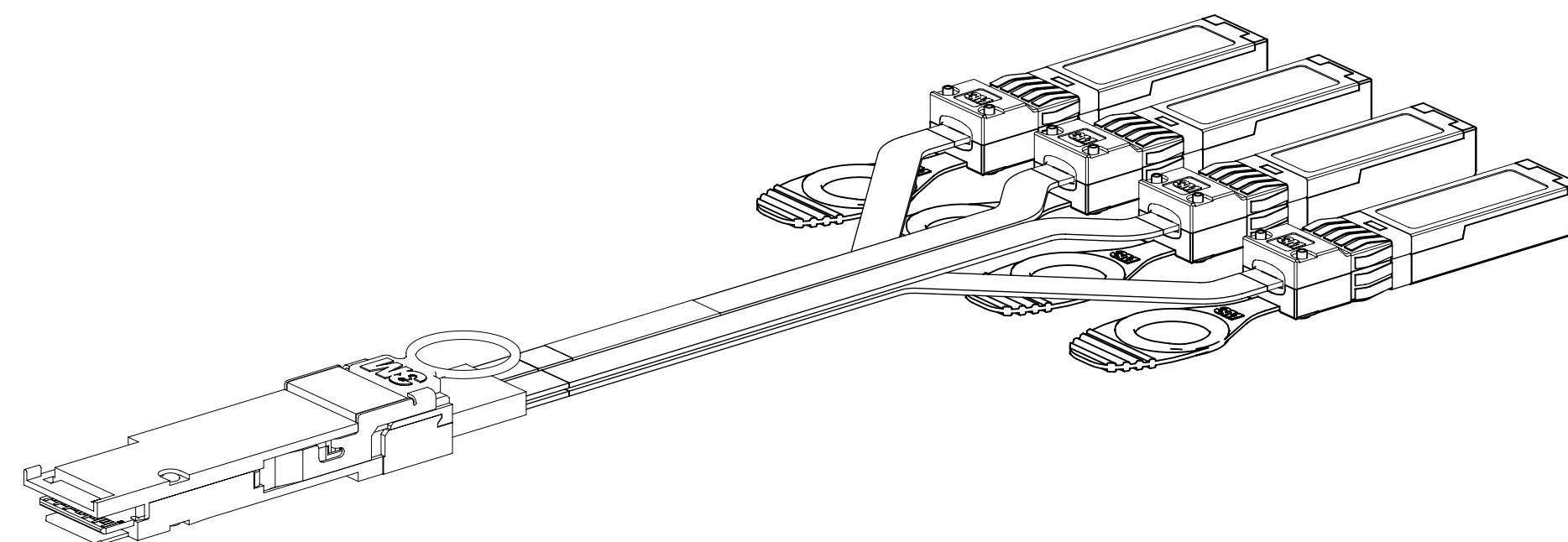
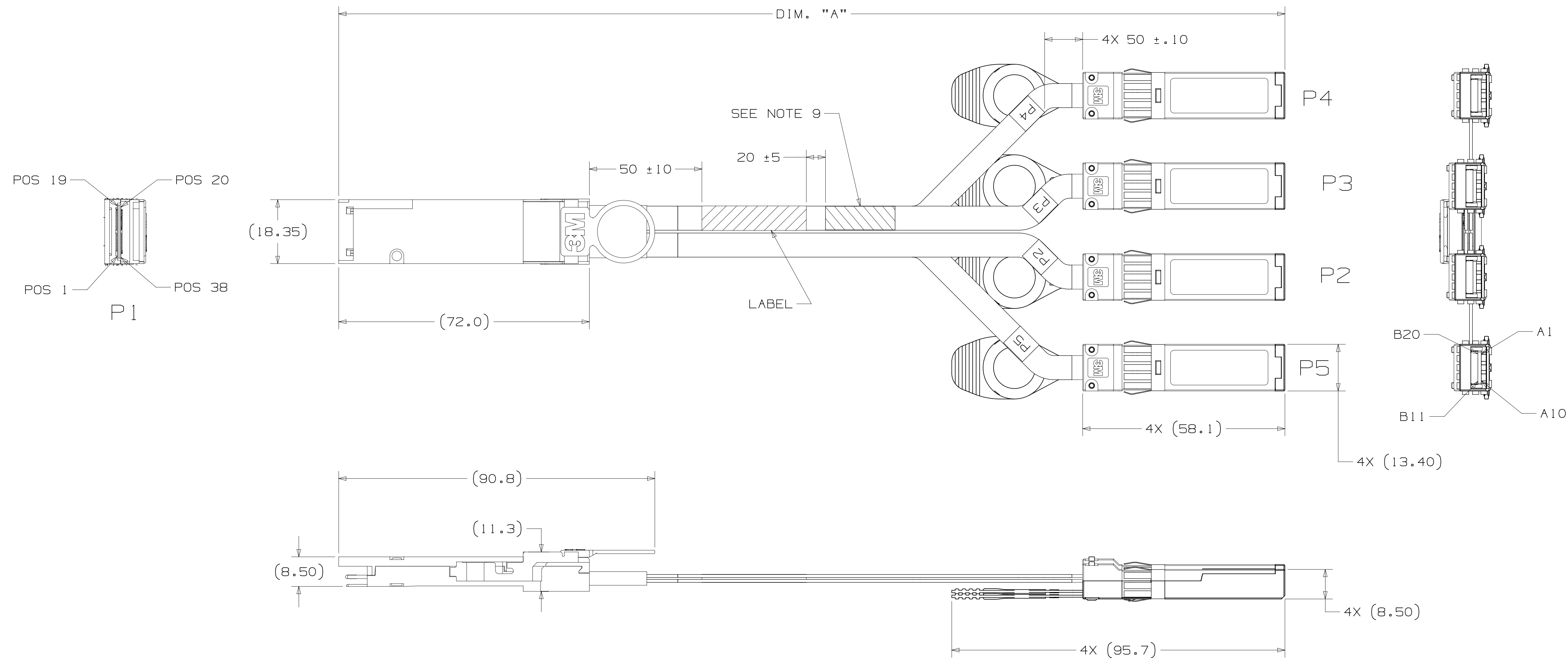


3M™ 100G QSFP28 TO 4X SFP28 DIRECT ATTACH COPPER CABLE ASSEMBLIES, 9S SERIES

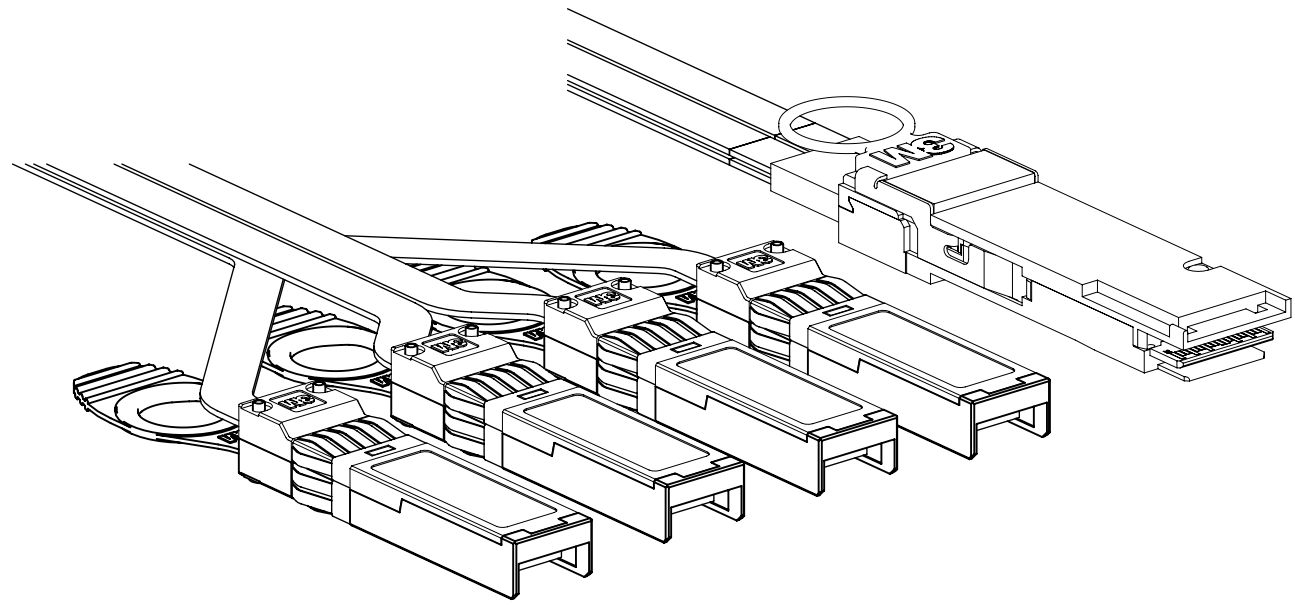


3M ELECTRONICS MATERIALS SOLUTIONS DIVISION
INTERCONNECT SOLUTIONS
<http://www.3M.com/interconnect>

3M IS A TRADEMARK OF 3M COMPANY.
FOR TECHNICAL, SALES OR ORDERING
INFORMATION CALL 800-225-5373

C	91871	SEP 03,2020	JNC	DLD
B	86392	SEP 16,2019	JNC	DLD
A	84719	JUN 26,2019	JNC	DLD
		PRODUCTION RELEASE		
DESIGN REFERENCE		NEXT ASSEMBLY	REV	ECO
<div> <div>ACCESS CODES</div> <div> <div></div> <div></div> <div></div> <div></div> <div></div> <div></div> <div></div> <div></div> <div></div> <div></div> </div> </div>		<div> <div>DATE</div> <div>AUG 20,2018</div> </div> <div> <div>DATE</div> <div></div> </div>	<div> <div>ISSUE DATE AND DESCRIPTION</div> <div></div> </div> <div> <div>DATE</div> <div></div> </div>	<div> <div>DRFT</div> <div>CHKD</div> </div> <div> <div>DATE</div> <div></div> </div>
DIVISION		DIVISION CODE	© 3M COPYRIGHT 2020 This document and the information it contains are 3M property and may not be reproduced or further distributed without 3M permission, or used or disclosed otherwise than for 3M authorized purposes. All rights reserved.	
DO NOT SCALE DRAWING		SCALE $\frac{3}{2}$	TOLERANCES EXCEPT AS NOTED INCHES .00 ± .000 ± .0000 ± MILLIMETERS 0 ± .0 ± .00 ± .000 ± ANGLES 1/2° ± 1° ± 1/4° ± 1/8° ± 1/16° ± 1/32° ± 1/64° ± 1/128° ± 1/256° ± 1/512° ± 1/1024° ± 1/2048° ± 1/4096° ± 1/8192° ± 1/16384° ± 1/32768° ± 1/65536° ± 1/131072° ± 1/262144° ± 1/524288° ± 1/1048576° ± 1/2097152° ± 1/4194304° ± 1/8388608° ± 1/16777216° ± 1/33554432° ± 1/67108864° ± 1/134217728° ± 1/268435456° ± 1/536870912° ± 1/1073741824° ± 1/2147483648° ± 1/4294967296° ± 1/8589934592° ± 1/17179869184° ± 1/34359738368° ± 1/68719476736° ± 1/137438953472° ± 1/274877906944° ± 1/549755813888° ± 1/1099511627776° ± 1/2199023255552° ± 1/4398046511104° ± 1/8796093022208° ± 1/17592186044416° ± 1/35184372088832° ± 1/70368744177664° ± 1/140737488355328° ± 1/281474976710656° ± 1/562949953421312° ± 1/1125899906842624° ± 1/2251799813685248° ± 1/4503599627370496° ± 1/9007199254740992° ± 1/18014398509481984° ± 1/36028797018963968° ± 1/72057594037927936° ± 1/144115188075855872° ± 1/288230376151711744° ± 1/576460752303423488° ± 1/1152921504606846976° ± 1/2305843009213693952° ± 1/4611686018427387904° ± 1/9223372036854775808° ± 1/18446744073709551616° ± 1/36893488147419103232° ± 1/73786976294838206464° ± 1/147573952589676412928° ± 1/295147905179352825856° ± 1/590295810358705651712° ± 1/1180591620717411303424° ± 1/2361183241434822606848° ± 1/4722366482869645213696° ± 1/9444732965739290427392° ± 1/18889465931478580854784° ± 1/37778931862957161709568° ± 1/75557863725914323419136° ± 1/151115727451828646838272° ± 1/302231454903657293676544° ± 1/604462909807314587353088° ± 1/1208925819614629174706176° ± 1/2417851639229258349412352° ± 1/4835703278458516698824704° ± 1/9671406556917033397649408° ± 1/19342813113834066795298816° ± 1/38685626227668133590597632° ± 1/77371252455336267181195264° ± 1/154742504910672534362390528° ± 1/309485009821345068724781056° ± 1/618970019642690137449562112° ± 1/1237940039285380274899124224° ± 1/2475880078570760549798248448° ± 1/4951760157141521099596496896° ± 1/9903520314283042199192993792° ± 1/19807040628566084398385987584° ± 1/39614081257132168796771975168° ± 1/79228162514264337593543950336° ± 1/158456325028528675187087900672° ± 1/316912650057057350374175801344° ± 1/633825300114114700748351602688° ± 1/1267650600228229401496703205376° ± 1/2535301200456458802993406410752° ± 1/5070602400912917605986812821504° ± 1/10141204801825835211973625643008° ± 1/20282409603651670423947251286016° ± 1/40564819207303340847894502572032° ± 1/81129638414606681695789005144064° ± 1/162259276829213363391578010288128° ± 1/324518553658426726783156020576256° ± 1/649037107316853453566312041152512° ± 1/1298074214633706907132624082305024° ± 1/2596148429267413814265248164610048° ± 1/5192296858534827628530496329220096° ± 1/10384593717069655257060992658440192° ± 1/20769187434139310514121985316880384° ± 1/41538374868278621028243970633760768° ± 1/83076749736557242056487941267521536° ± 1/166153499473114484112975882535043072° ± 1/332306998946228968225951765070086144° ± 	

3M™ 100G QSFP28 TO 4X SFP28 DIRECT ATTACH COPPER CABLE ASSEMBLIES, 9S SERIES



QSFP28 LOW SPEED SIGNALS	
P1	
POS	SIGNAL
8	ModSelL
9	ResetL
10	VccRx
11	SCL
12	SDA
27	ModPrsL
28	IntL
29	VccTx
30	VccI
31	LPMode

QSFP28: P1 END	POS.	SIGNAL	SPF+ END	POS.	SIGNAL
	1	GND (TX)	P2	12	RxN
	2	TX2n		13	RxP
	3	TX2p			
	4	GND (TX)	P3	12	RxN
	5	TX4n		13	RxP
	6	TX4p			
	7	GND (TX)	P4	18	TxP
	13	GND (RX)		19	TxN
	14	RX3p			
	15	RX3n	P5	18	TxP
	16	GND (RX)		19	TxN
	17	RX1p			
	18	RX1n	P2	19	TxN
	19	GND (RX)		18	TxP
	20	GND (RX)			
	21	RX2n	P4	19	TxN
	22	RX2p		18	TxP
	23	GND (RX)			
	24	RX4n	P3	13	RxP
	25	RX4p		12	RxN
	26	GND (RX)			
	32	GND (TX)	P5	13	RxP
	33	TX3P		12	RxN
	34	TX3n			
	35	GND (TX)	P2	13	RxP
	36	TX1p		12	RxN
	37	TX1n			
	38	GND (RX)			

- NOTES:
- ORDERING INFORMATION: REFER TO PART NUMBER TABLE.
 - REFER TO PART NUMBER TABLE FOR CABLE LNGTH, WIDTH AND WIRE AWG.
 - DESIGN TO MEET STANDARDS: IEEE 802.3bJ, SFF-8661, 8662, 8665, 8431.
 - MATERIAL:
JACKET FOR CABLE: HALOGEN-FREE* CL2, COLOR: BLACK.
METAL SHELL: NICKEL PLATED ZINC ALLOY.
PULL TAB: HALOGEN-FREE* THERMOPLASTIC, COLOR: BLACK.
PCB: HALOGENATED FLAME RETARDANT
 - ALL CABLE ASSEMBLIES ARE INDIVIDUALLY BAGGED.
 - UNLESS OTHERWISE NOTED, REFERENCES TO INDUSTRY SPECIFICATIONS ARE INTENDED TO INDICATE SUBSTANTIAL COMPLIANCE TO THE MATERIAL ELEMENTS OF THE SPECIFICATIONS. SUCH REFERENCES SHOULD NOT BE CONSTRUED AS A GUARANTEE OF COMPLIANCE TO ALL REQUIREMENTS IN THE STANDARD.
 - REGULATORY INFORMATION: VISIT 3M.com/regs OR CONTACT YOUR 3M REPRESENTATIVE TO FIND THE RoHS COMPLIANCE STATUS OF THE 3M PART YOU ARE INTERESTED IN.
 - * HALOGEN-FREE IS DEFINED AS BOTH (1) NO HALOGEN COMPOUNDS ARE INTENTIONALLY ADDED TO THE PRODUCT OR USED IN THE MANUFACTURING PROCESS FOR THE PRODUCT, AND (2) ANY IMPURITIES PRESENT ARE LESS THAN 900 PPM BROMINE, LESS THAN 900 PPM CHLORINE, AND/OR LESS THAN 1500 PPM TOTAL BROMINE AND CHLORINE.
 - CE AND WEEE LABEL.
CE HEIGHT: MUST BE AT LEAST 5MM
WEEE HEIGHT: MUST BE AT LEAST 7MM.

ORDERING INFORMATION

9SR- AXX- ABC- X.XX

(LENGTH IN METERS)

CABLE:
D6 = 30 AWG, CL2, WITH SHIELD, MAX LENGTH 2 METERS
D5 = 26 AWG, CL2, WITH SHIELD, MAX LENGTH 4.5 METERS

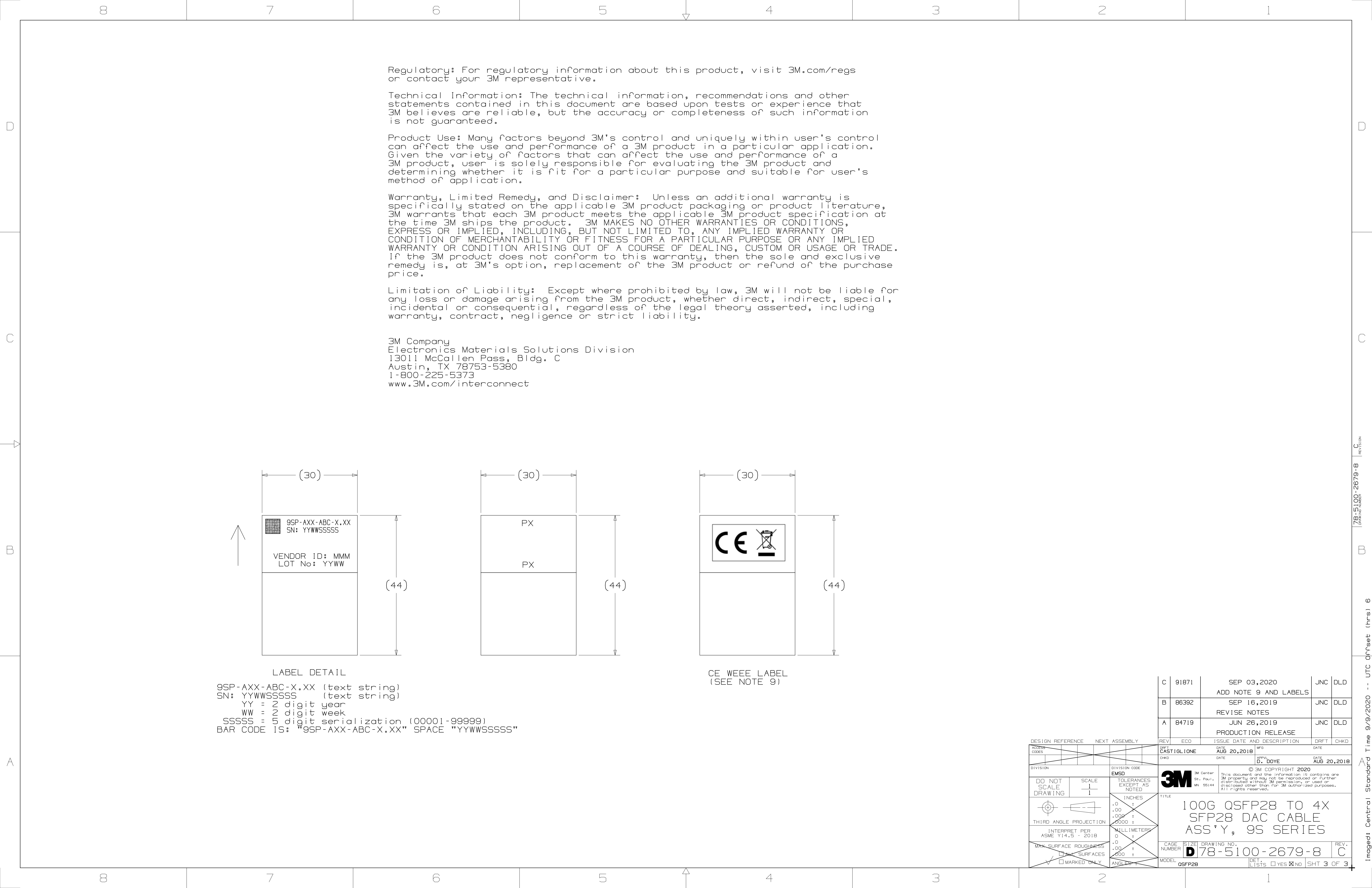
NOTE:
FOR CUSTOM LENGTHS CONTACT A 3M SALES REPRESENTATIVE.

3M ELECTRONICS MATERIALS SOLUTIONS DIVISION
INTERCONNECT SOLUTIONS
<http://www.3M.com/interconnect>

3M IS A TRADEMARK OF 3M COMPANY.
FOR TECHNICAL, SALES OR ORDERING
INFORMATION CALL 800-225-5373

ORDERING INFO.	CABLE AWG	ASSEMBLY LENGTH "A"	LENGTH TOLERANCE
9SR-AD6-ABC-0.50	30	0.5M	+/- 25MM
9SR-AD6-ABC-1.00		1.00M	
9SR-AD6-ABC-2.00		2.00M	
9SR-AD5-ABC-3.00	26	3.00M	+/- 50MM
9SR-AD5-ABC-4.00		4.00M	

C	91871	SEP 03,2020	JNC	DLD
B	86392	SEP 16,2019	JNC	DLD
A	84719	JUN 26,2019	JNC	DLD
REV	ECO	ISSUE DATE AND DESCRIPTION	DRFT	CHKD
DRP	CASTIGLIONE	DATE AUG 20,2018	DATE	
CHKD		DATE	DATE	
APPR	D. DOYE	DATE AUG 20,2018	DATE	
DIVISION	EMSD	DIVISION CODE		
DO NOT SCALE DRAWING	SCALE 1/1	TOLERANCES EXCEPT AS NOTED		
THIRD ANGLE PROJECTION	INTERPRET PER ASME Y14.5 - 2018	INCHES .00 ± .000 ± .0000 ±		
MAX SURFACE ROUGHNESS	10X SURFACES	MILLIMETERS 0 ± .00 ± .000 ±		
MARKED ONLY		ANGLES		
TITLE	100G QSFP28 TO 4X SFP28 DAC CABLE ASS'Y, 9S SERIES			
CAGE NUMBER	D78-5100-2679-8	DRAWING NO.		
MODEL	QSFP28	REV.	C	
DET	LISTS	YES	NO	SHT 2 OF 3



Mouser Electronics

Authorized Distributor

Click to View Pricing, Inventory, Delivery & Lifecycle Information:

3M:

[9SR-AD6-ABC-1.00](#)