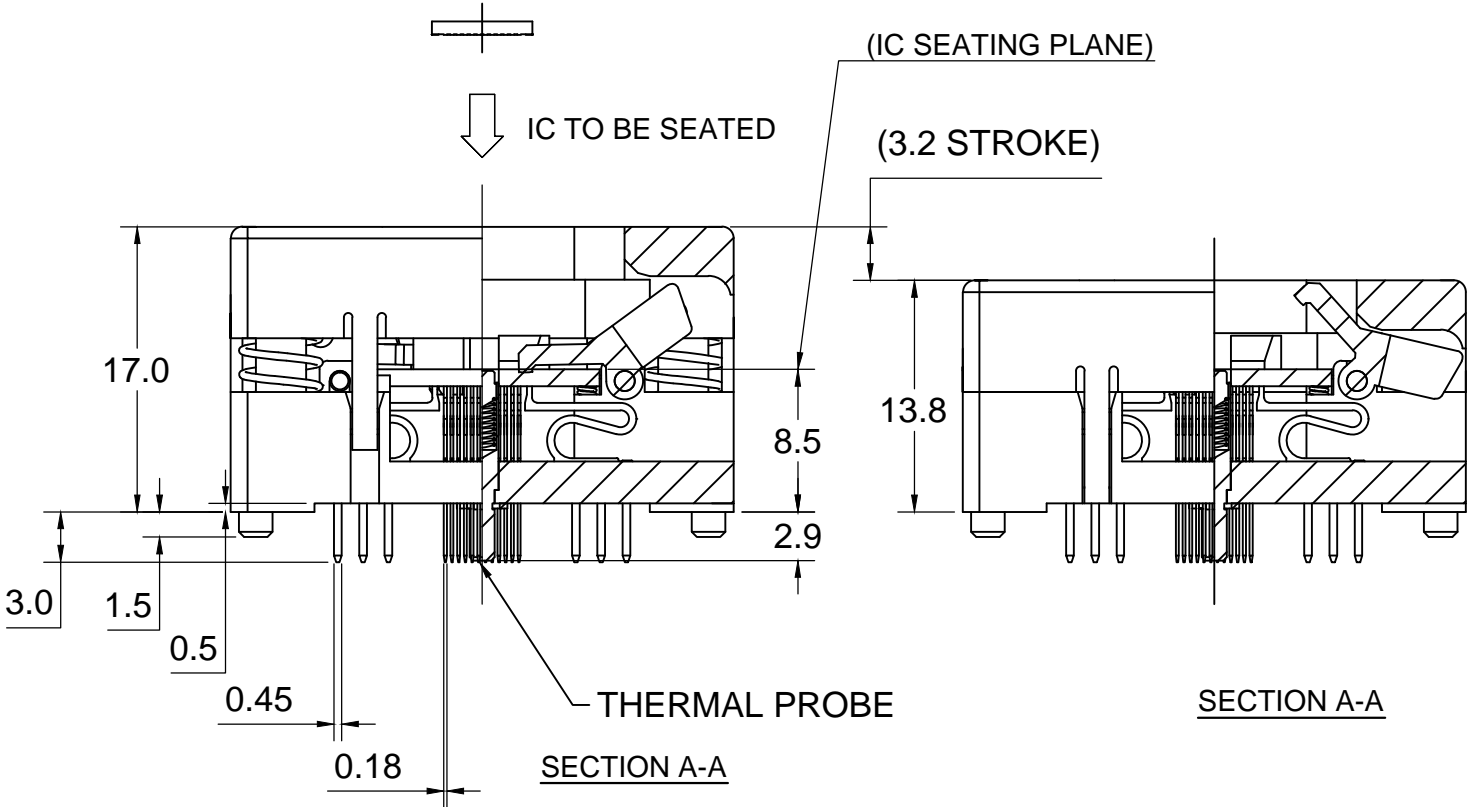
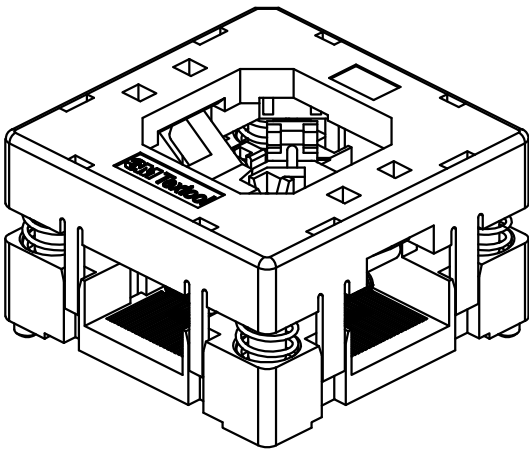
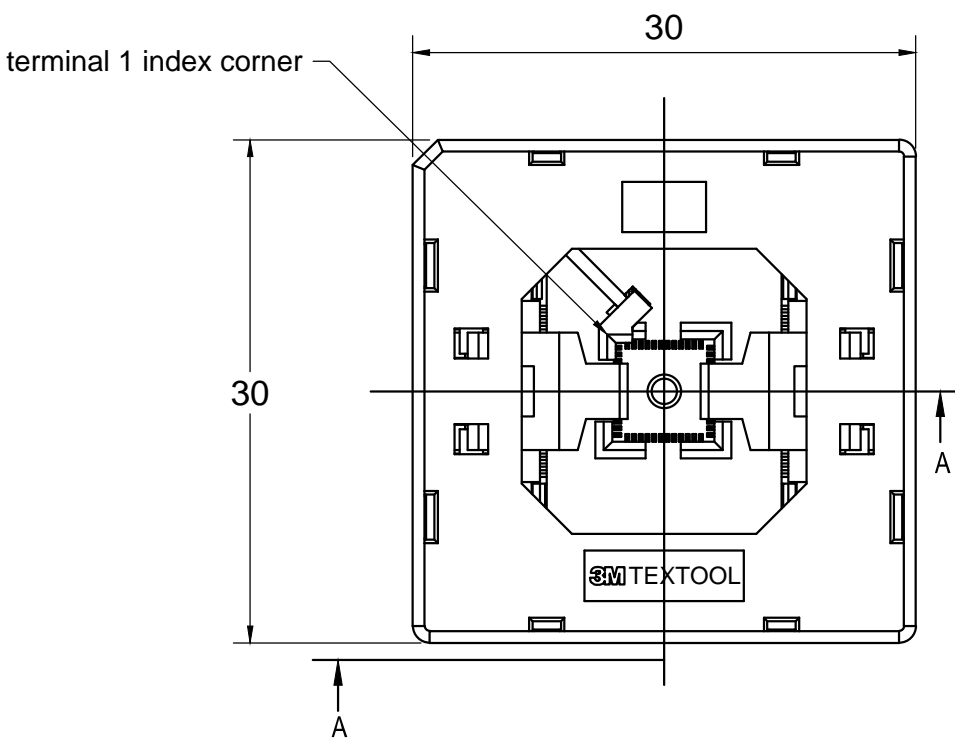


3M™ TEXTTOOL™ OPEN-TOP SOCKETS FOR QFN APPLICATIONS

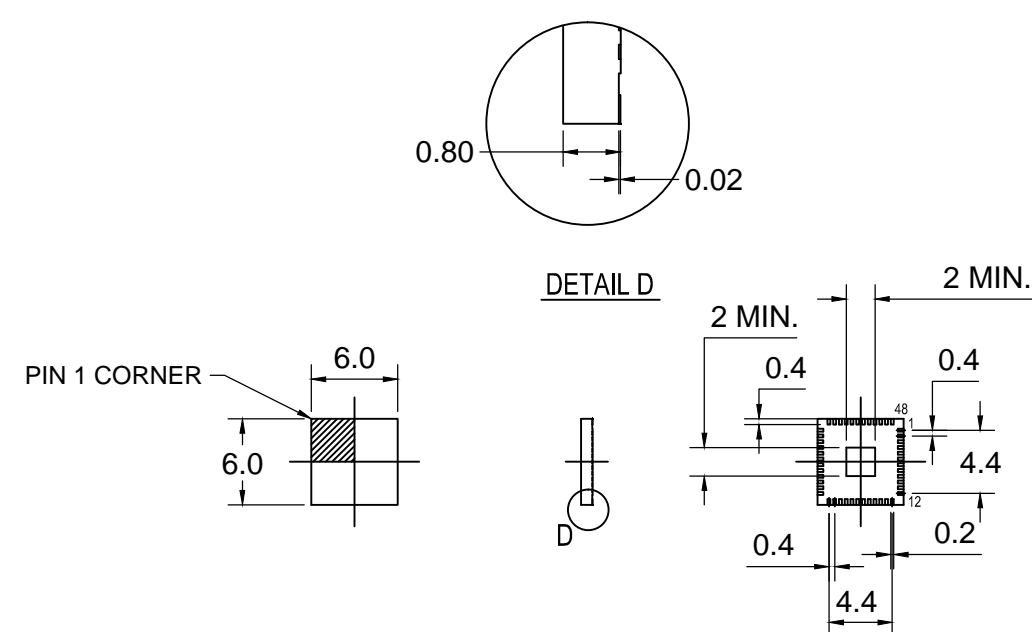


NOTES:

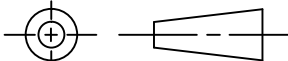
1. MATERIALS:
- | | | |
|--------------|---------------|---------------|
| SPRINGS | SS | PLATING : Au |
| CONTACTS | Be Cu | COLOR : BLACK |
| IC GUIDES | PES | COLOR : BLACK |
| PRESSURE PAD | PES | COLOR : BLACK |
| COVER | PPS or equiv. | COLOR : BLACK |
| BASE | PES | COLOR : BLACK |
2. SEE THE REGULATORY INFORMATION APPENDIX (RIA) IN THE "RoHS COMPLIANCE" SECTION WWW.3MCONNECTOR.COM FOR COMPLIANCE INFORMATION (RIA E1 & C1 APPLY).
3. FOR PRODUCT SPECIFICATIONS AND WARRANTY INFORMATION SEE: WWW.3MCONNECTOR.COM PN 248-4205-01

DESIGN REFERENCE										NEXT ASSEMBLY										A 37213 INITIAL RELEASE										ARM																																																	
DISTRIBUTION CODES										DO NOT SCALE DRAWING										SCALE 5 1										TOLERANCES EXCEPT AS NOTED										REV ECO										ISSUE DATE AND DESCRIPTION										DRFT										CHKD									
DIVISION										DIVISION CODE										3M 3M Center St. Paul, MN 55144										© 3M COPYRIGHT 2012 This document is the copyrighted property of the 3M Company and may not be reproduced without 3M written permission or used for other than 3M authorized purposes.																																																	
THIRD ANGLE PROJECTION										INTERPRET PER ASME Y14.5 - 1994										MAX SURFACE ROUGHNESS 125 ✓ <input type="checkbox"/> ALL SURFACES <input checked="" type="checkbox"/> MARKED ONLY										TITLE QFN TEST SOCKET, 0.4mm, 48 pos, EVEN ROW, 6X6 PKG, WITH TP										CAGE NUMBER C										SIZE 78-5100-2451-2										DRAWING NO. 78-5100-2451-2										REV. A									
INCHES .0 ± .1 .00 ± .02 .000 ± .005 .0000 ± .0002										MILLIMETERS 0 ± .0 .00 ± .005 .000 ± .0002										ANGLES ± 1°										MODEL TEXTTOOL - QFN										DET. LISTS <input type="checkbox"/> YES <input checked="" type="checkbox"/> NO										SHT 1 OF 2																													

A



RECOMMENDED IC (REF.)

DESIGN REFERENCE				NEXT ASSEMBLY				REV	ECO	ISSUE DATE AND DESCRIPTION				DRFT	CHKD		
DISTRIBUTION CODES								DRFT	DATE			MFG		DATE			
								CHKD	DATE			APPL		DATE			
DIVISION				DIVISION CODE				<div>3M</div> <div>3M Center St. Paul, MN 55144</div> <div>© 3M COPYRIGHT 2012 This document is the copyrighted property of the 3M Company and may not be reproduced without 3M written permission or used for other than 3M authorized purposes.</div>				TITLE					
DO NOT SCALE DRAWING		SCALE 5 1		TOLERANCES EXCEPT AS NOTED													
<div></div> <div>THIRD ANGLE PROJECTION</div>				INCHES		QFN TEST SOCKET, 0.4mm, 48 pos, EVEN ROW, 6X6 PKG, WITH TP											
				MILLIMETERS													
MAX SURFACE ROUGHNESS				<div>0 ± .00 ± .000 ± .0000 ±</div> <div>0 ± .00 ± .000 ± .0000 ±</div>		CAGE NUMBER		SIZE	DRAWING NO.				REV.				
125 ✓ <input checked="" type="checkbox"/> MARKED ONLY						ANGLES ± 1°		<input checked="" type="checkbox"/> C		78-5100-2451-2				A			
				MODEL				TEXTTOOL - QFN				DET. LISTS		<input type="checkbox"/> YES <input checked="" type="checkbox"/> NO		SHT 2 OF 2	

Mouser Electronics

Authorized Distributor

Click to View Pricing, Inventory, Delivery & Lifecycle Information:

3M:

[248-4205-01](#)