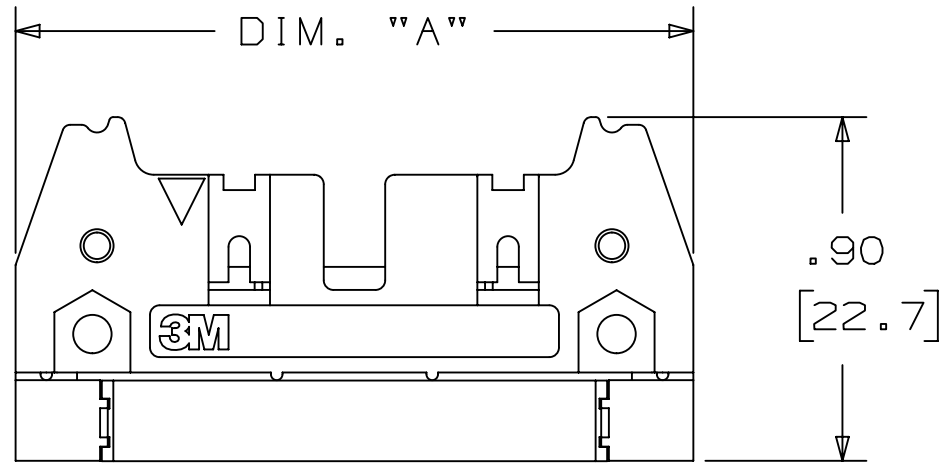
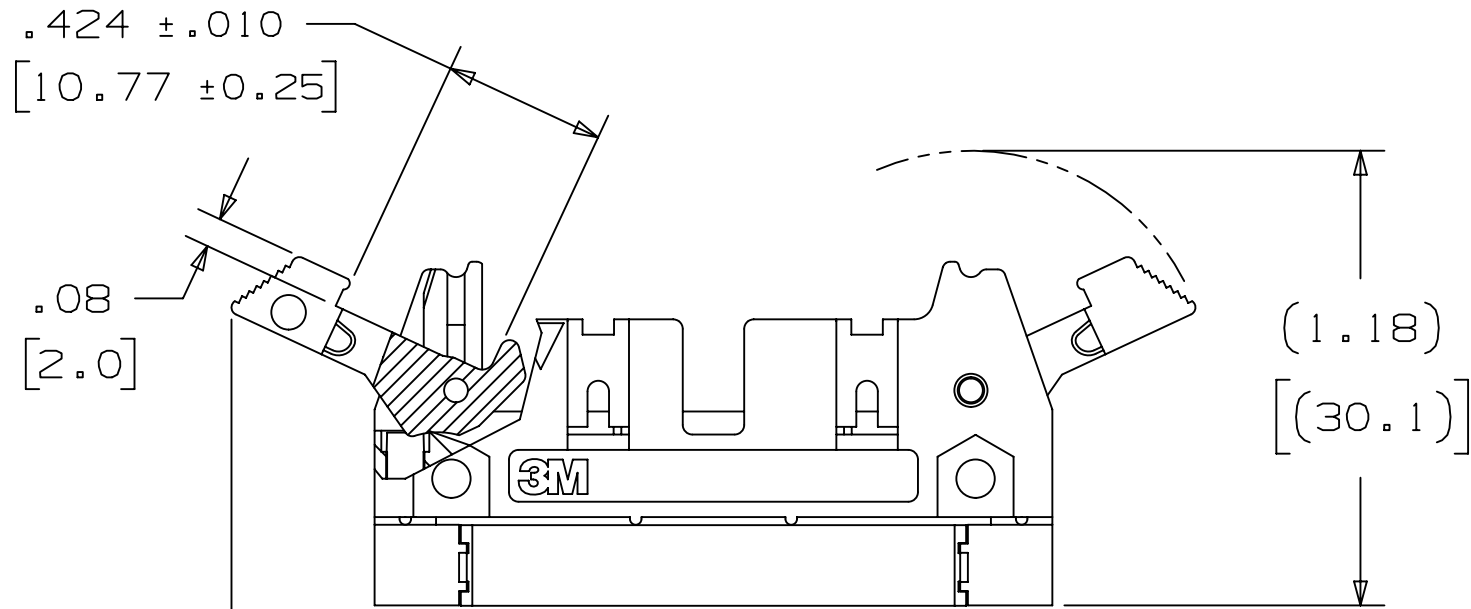


3M™ THREE-WALL CONDO HEADER, 3000 SERIES

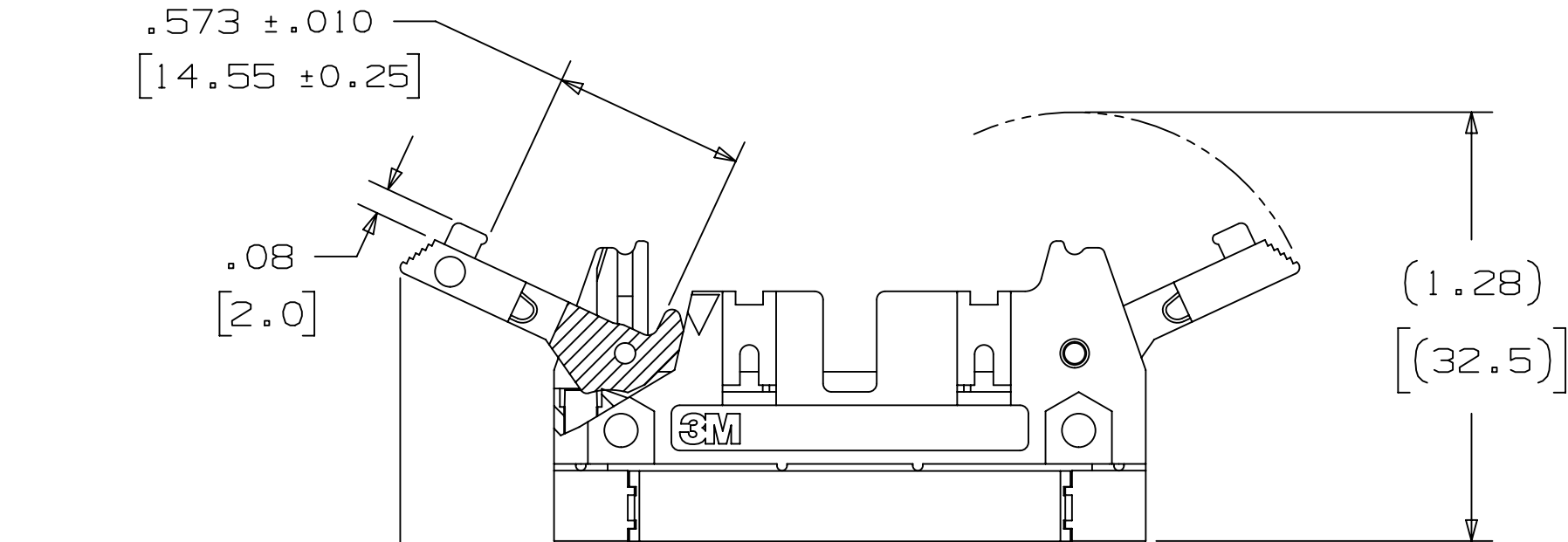
.100" X .100" LATCH/EJECTOR, RIGHT ANGLE



-D00X
HEADER WITHOUT LATCH EJECTOR



(.37) [(9.5)]
-D20X
HEADER WITH SHORT LATCH EJECTOR
FOR 3M SOCKETS WITHOUT STRAIN RELIEF



(.46) [(11.7)]
-D30X
HEADER WITH LONG LATCH EJECTOR
FOR 3M SOCKETS WITH STRAIN RELIEF

2 PHYSICAL :

INSULATOR:
MATERIAL: HIGH TEMP GLASS FILLED POLYESTER (PCT)
FLAMMABILITY: UL94V-0
COLOR: BLACK
CONTACT:
MATERIAL: COPPER ALLOY
PLATING:
UNDER PLATING: 50μ"-150μ" [1.27μm-3.81μm] NICKEL-OVERALL
WIPING AREA: 30μ" [0.76μm] AVG. GOLD
SOLDER TAILS: 200μ" [5.08μm] MIN MATTE TIN
MARKINGS: 3M LOGO, PART IDENTIFICATION NUMBER AND ORIENTATION TRIANGLE

2 ELECTRICAL :

CURRENT RATING: 1A (EIA 364-70)
INSULATION RESISTANCE: >1 X 10⁹Ω AT 500 V_{DC}
WITHSTANDING VOLTAGE: 1,000V_{RMS} AT SEA LEVEL

2 ENVIRONMENTAL :

TEMPERATURE RATING: -55°C TO 105°C
PROCESS RATING: 260°C, PER J-STD-020C, SINGLE PASS
MOISTURE SENSITIVITY LEVEL: 1 (PER J-STD-020C, SINGLE PASS)

NOTES

1. REGULATORY INFORMATION:
VISIT 3M.com/regs
2. IN THE EVENT OF CONFLICT
BETWEEN THIS DATA AND THAT
CONTAINED IN THE PRODUCT
SPECIFICATION, THE PRODUCT
SPECIFICATION TAKES PRECEDENT.
3. NOTCHES A & C WILL ACCOMODATE
3M POLARIZING KEY: N3518.
4. MOUNTING HARDWARE:
FROM SOLDER SIDE OF PC BOARD
USE #4-24 THREAD CUTTING SCREW
(3M PART #3341-5) WITH
Ø .116 [2.95] MOUNTING HOLE.

ORDERING INFORMATION

N3XXX-DXXXRB

3M PART NUMBER:
(SEE TABLE 1)

PLATING:

TAIL:

LATCH/EJECTOR SYSTEM:
0 = NO LATCH/EJECTOR INSTALLED
2 = SHORT ROLL PIN LATCH/EJECTORS
3 = LONG ROLL PIN LATCH/EJECTORS
02 = FOR .062 [1.57] THICK BOARD
03 = FOR .094 TO .125 [2.39 TO 3.18] THICK BOARD

DIMENSIONS: INCHES [MM]
[MM] IS REF. ONLY

DESIGN REFERENCE	NEXT ASSEMBLY
XXXXP CODES	
DIVISION Interconnect Solutions	DIVISION CODE EMSD
DO NOT SCALE DRAWING	SCALE 2 1
	TOLERANCES EXCEPT AS NOTED
	INCHES .0 ±.1 .00 ±.01 .000 ±.005 .0000 ±.0002
	MILLIMETERS 0 ±2 .0 ±.3 .00 ±.13 .000 ±.005
	INTERPRET PER ASME Y14.5 - 2018
	MAX. SURFACE ROUGHNESS ALL SURFACES ✓ MARKED ONLY
	ANGLES

M	97909	JUN 22,2021	JNC	SAN
L	93619	JAN 06,2021	JNC	SAN
K	60056	MAR 06,2015	JNC	RS
J	56068	AUG 05,2014	JNC	RS
REV	ECO	ISSUE DATE AND DESCRIPTION	DRFT	CHKD
DRFT	CASTIGLIONE	DATE AUG 05,2014	MFS	DATE
CHKD		DATE	APPRV R. SCHERER	DATE SEP 05,2014
© 3M COPYRIGHT 2021 This document and the information it contains are 3M property and may not be reproduced or further distributed without 3M permission, or used or disclosed other than for 3M authorized purposes. All rights reserved.				
TITLE THREE-WALL CONDO HEADER, .100 X .100 LATCH/EJECT, RA				
CAGE NUMBER	SIZE D	DRAWING NO. 78-5100-0773-1	REV. M	
MODEL 3400	DET LISTS	YES	NO	SHT 1 OF 4

3M ELECTRONICS MATERIALS SOLUTIONS DIVISION
INTERCONNECT SOLUTIONS
<http://www.3M.com/interconnect>

3M IS A TRADEMARK OF 3M COMPANY.
FOR TECHNICAL, SALES OR ORDERING
INFORMATION CALL 800-225-5373

UL FILE NO: E68080

3M™ THREE-WALL CONDO HEADER, 3000 SERIES
.100" X .100" LATCH/EJECTOR, RIGHT ANGLE

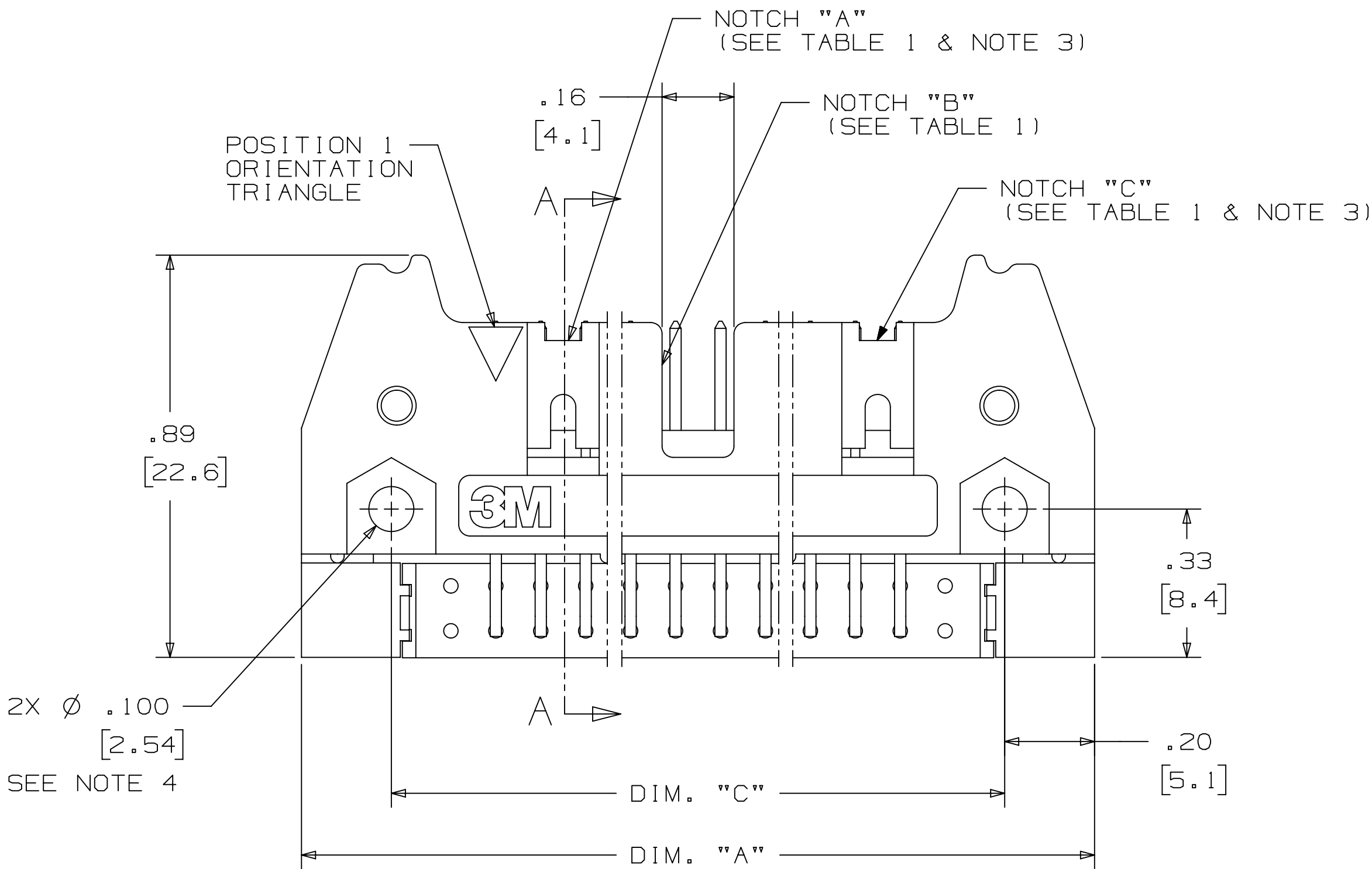
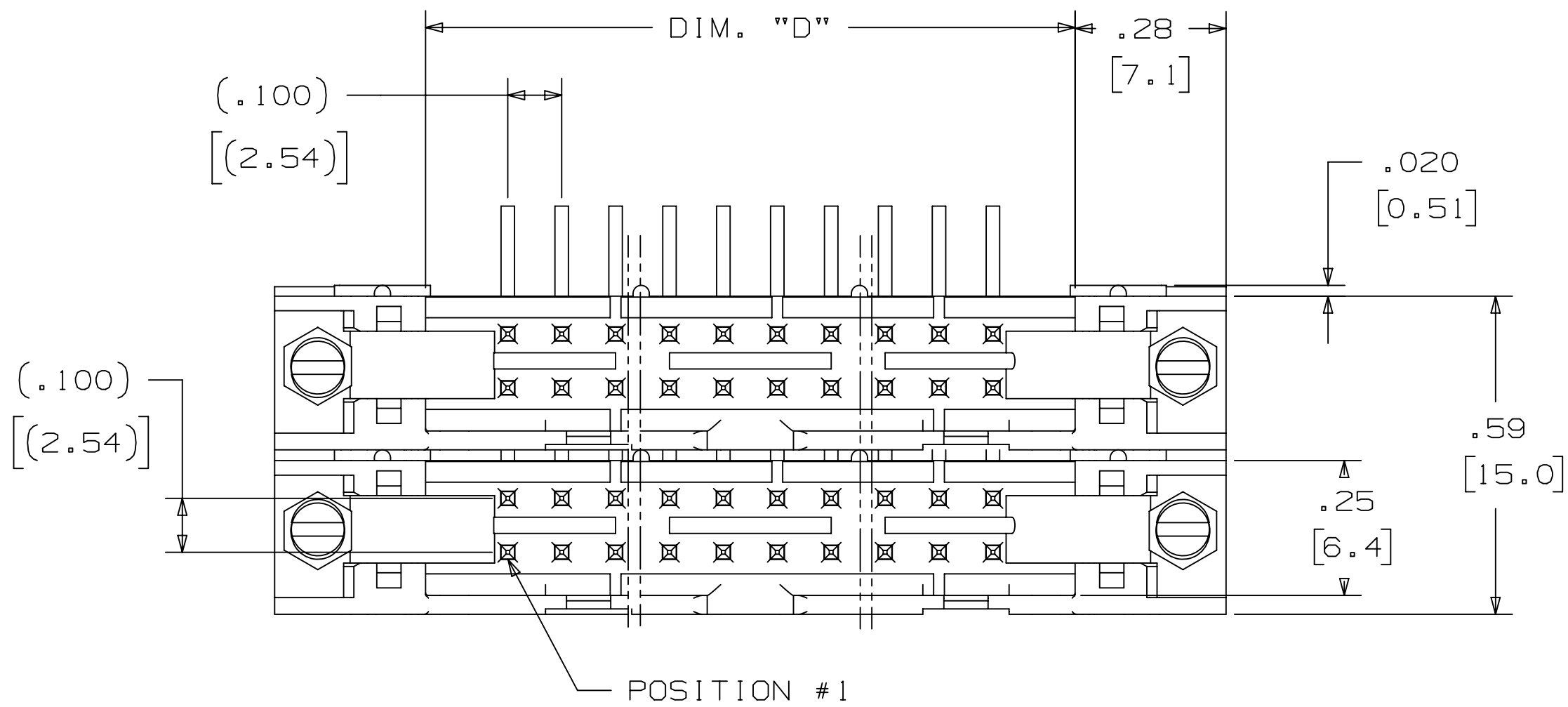
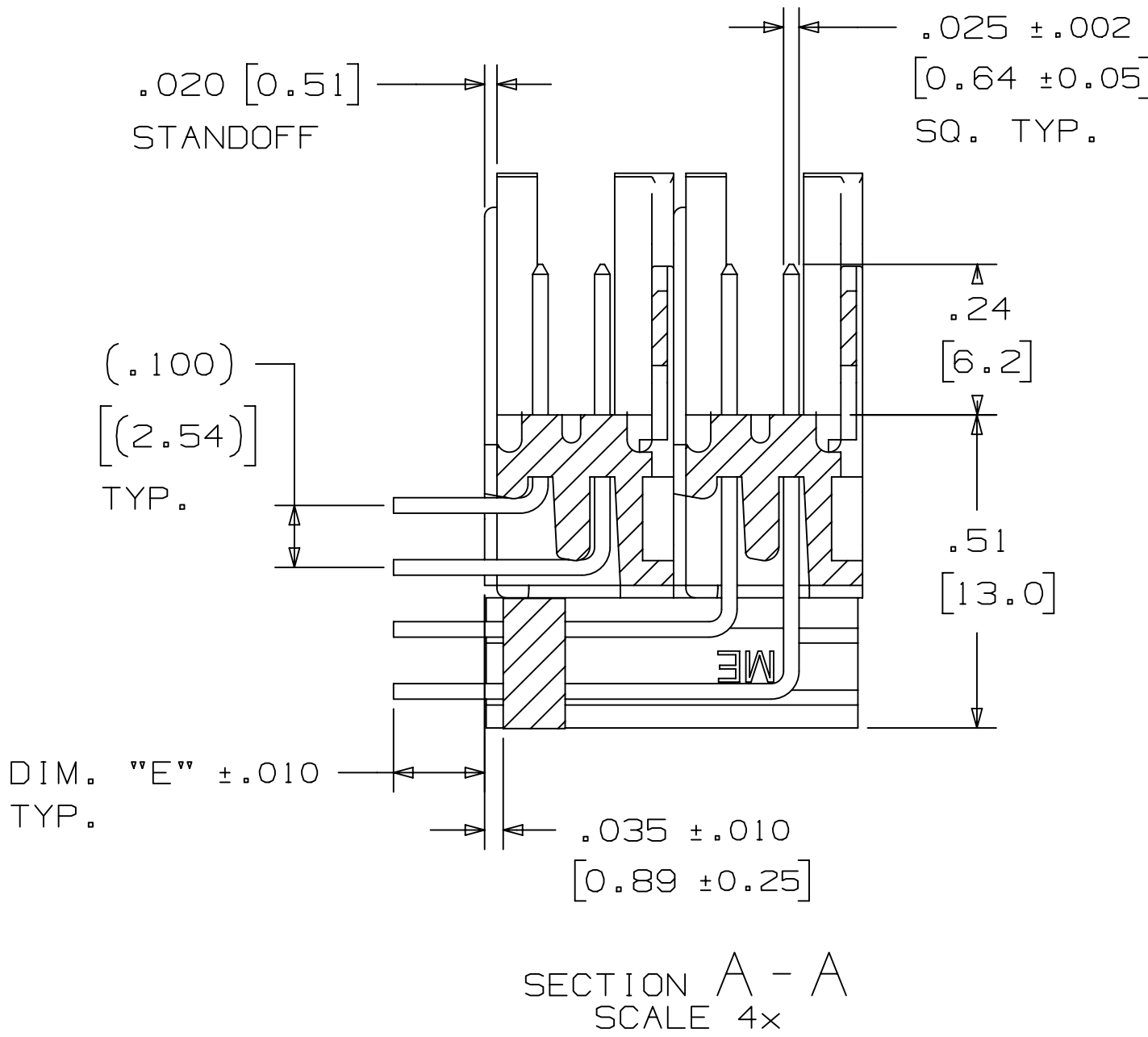


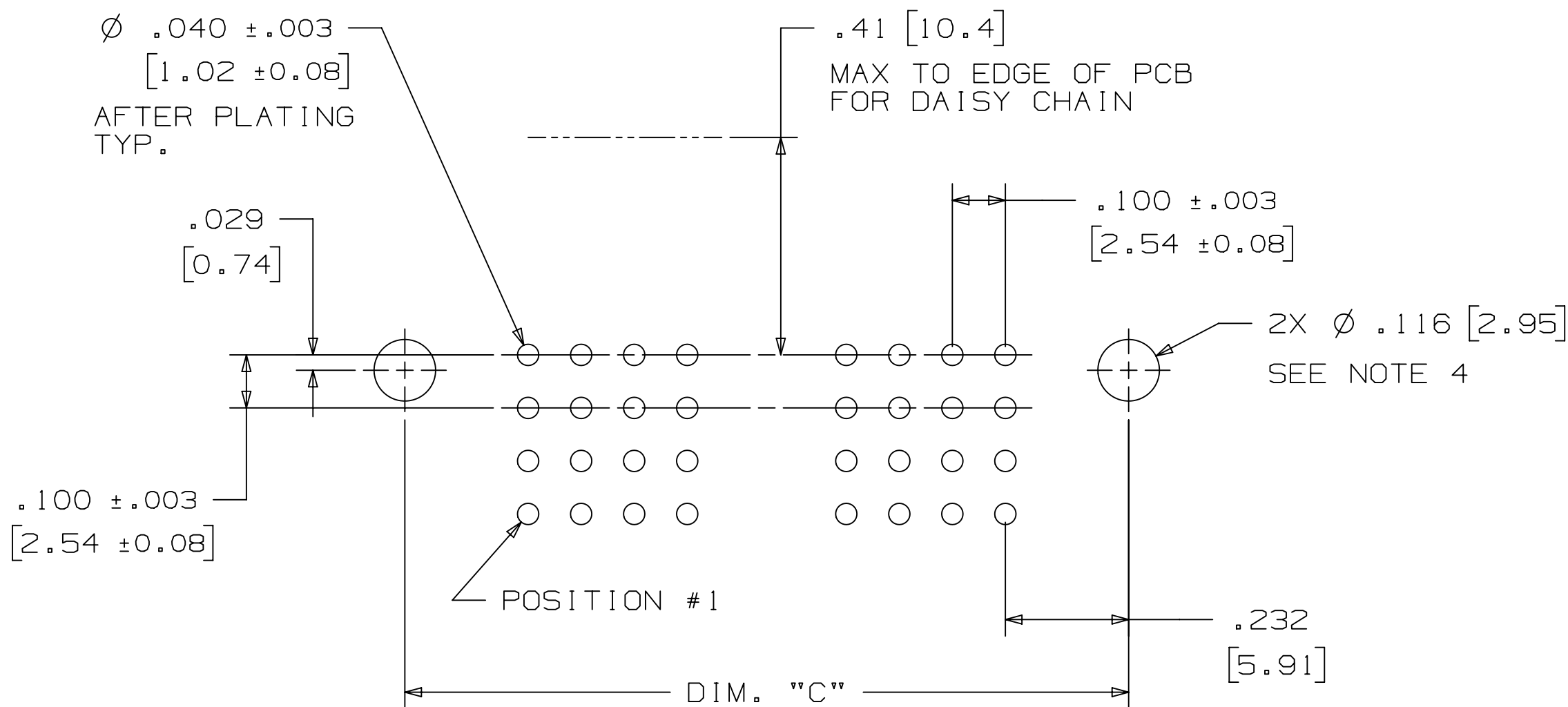
TABLE 1						
PIN QTY.	3M PART NUMBER	DIM. "A"	DIM. "C"	DIM. "D"	POLARIZING NOTCHES	PIN QTY.
20	3793	1.26 [32.1]	.865 [21.97]	.71 [18.0]	BC	20
28	3314	1.46 [37.2]	1.065 [27.05]	.91 [23.1]	BC	28
32	3408	1.56 [39.7]	1.165 [29.59]	1.01 [25.6]	ABC	32
40	3428	1.76 [44.8]	1.365 [34.67]	1.21 [30.7]	ABC	40
48	3627	1.96 [49.9]	1.565 [39.75]	1.41 [35.8]	ABC	48
52	3429	2.06 [52.4]	1.665 [42.29]	1.51 [38.3]	ABC	52
60	3440	2.26 [57.5]	1.865 [47.37]	1.71 [43.4]	ABC	60
68	3431	2.46 [62.6]	2.065 [52.45]	1.91 [48.5]	ABC	68
80	3432	2.76 [70.2]	2.365 [60.07]	2.21 [56.1]	ABC	80
100	3433	3.26 [82.9]	2.865 [72.77]	2.71 [68.8]	ABC	100
120	3372	3.76 [95.6]	3.365 [85.47]	3.21 [81.5]	ABC	120
128	3764	3.96 [100.7]	3.565 [90.55]	3.41 [86.6]	ABC	128

TABLE 2		
3M PART NUMBER SUFFIX	CONTACT TAIL	DIM. "E"
-XX02	02	.112 [2.84]
-XX03	03	.155 [3.94]

NOTE:
.112 [2.84] TAIL LENGTH SUITABLE FOR
.062 [1.57] THICK PC BOARD.

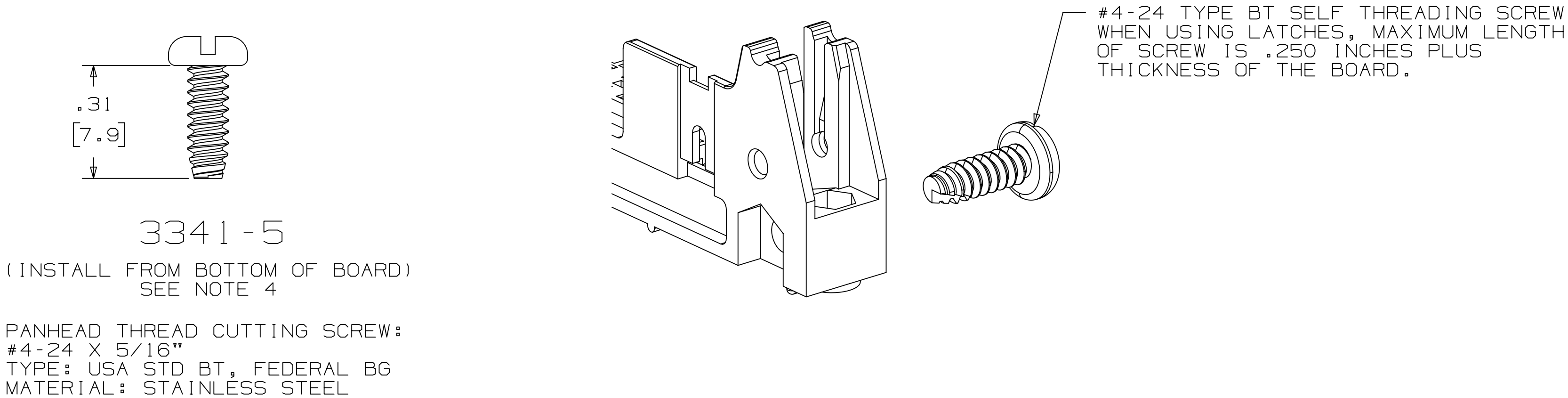
DESIGN REFERENCE	NEXT ASSEMBLY	REV	ECO	ISSUE DATE AND DESCRIPTION	DRFT	CHKD
XXXXXX	XXXXXX	DRFT	CASTIGLIONE	DATE AUG 05,2014	MFG	DATE
DIVISION	Interconnect Solutions	DIVISION CODE	EMSD	APPRV	R. SCHERER	DATE SEP 05,2014
DO NOT SCALE DRAWING	SCALE 4/1	TOLERANCES EXCEPT AS NOTED				
THIRD ANGLE PROJECTION	INTERPRET PER ASME Y14.5 - 2018	MILLIMETERS 0 ±2				
MAX. SURFACE ROUGHNESS	ALL SURFACES	INCHES .00 ±.01				
MARKED ONLY		MILLIMETERS .00 ±.13				
		INCHES .0000 ±.0002				
		MILLIMETERS .00 ±.3				
		INCHES .0000 ±.0005				
		MILLIMETERS .000 ±.005				
		INCHES .0000 ±.0002				
		MILLIMETERS .00 ±.3				
		INCHES .0000 ±.0005				
		MILLIMETERS .000 ±.005				
		INCHES .0000 ±.0002				
		MILLIMETERS .00 ±.3				
		INCHES .0000 ±.0005				
		MILLIMETERS .000 ±.005				
		INCHES .0000 ±.0002				
		MILLIMETERS .00 ±.3				
		INCHES .0000 ±.0005				
		MILLIMETERS .000 ±.005				
		INCHES .0000 ±.0002				
		MILLIMETERS .00 ±.3				
		INCHES .0000 ±.0005				
		MILLIMETERS .000 ±.005				
		INCHES .0000 ±.0002				
		MILLIMETERS .00 ±.3				
		INCHES .0000 ±.0005				
		MILLIMETERS .000 ±.005				
		INCHES .0000 ±.0002				
		MILLIMETERS .00 ±.3				
		INCHES .0000 ±.0005				
		MILLIMETERS .000 ±.005				
		INCHES .0000 ±.0002				
		MILLIMETERS .00 ±.3				
		INCHES .0000 ±.0005				
		MILLIMETERS .000 ±.005				
		INCHES .0000 ±.0002				
		MILLIMETERS .00 ±.3				
		INCHES .0000 ±.0005				
		MILLIMETERS .000 ±.005				
		INCHES .0000 ±.0002				
		MILLIMETERS .00 ±.3				
		INCHES .0000 ±.0005				
		MILLIMETERS .000 ±.005				
		INCHES .0000 ±.0002				
		MILLIMETERS .00 ±.3				
		INCHES .0000 ±.0005				
		MILLIMETERS .000 ±.005				
		INCHES .0000 ±.0002				
		MILLIMETERS .00 ±.3				
		INCHES .0000 ±.0005				
		MILLIMETERS .000 ±.005				
		INCHES .0000 ±.0002				
		MILLIMETERS .00 ±.3				
		INCHES .0000 ±.0005				
		MILLIMETERS .000 ±.005				
		INCHES .0000 ±.0002				
		MILLIMETERS .00 ±.3				
		INCHES .0000 ±.0005				
		MILLIMETERS .000 ±.005				
		INCHES .0000 ±.0002				
		MILLIMETERS .00 ±.3				
		INCHES .0000 ±.0005				
		MILLIMETERS .000 ±.005				
		INCHES .0000 ±.0002				
		MILLIMETERS .00 ±.3				
		INCHES .0000 ±.0005				
		MILLIMETERS .000 ±.005				
		INCHES .0000 ±.0002				
		MILLIMETERS .00 ±.3				
		INCHES .0000 ±.0005				
		MILLIMETERS .000 ±.005				
		INCHES .0000 ±.0002				
		MILLIMETERS .00 ±.3				
		INCHES .0000 ±.0005				
		MILLIMETERS .000 ±.005				
		INCHES .0000 ±.0002				
		MILLIMETERS .00 ±.3				
		INCHES .0000 ±.0005				
		MILLIMETERS .000 ±.005				
		INCHES .0000 ±.0002				
		MILLIMETERS .00 ±.3				
		INCHES .0000 ±.0005				
		MILLIMETERS .000 ±.005				
		INCHES .0000 ±.0002				
		MILLIMETERS .00 ±.3				
		INCHES .0000 ±.0005				
		MILLIMETERS .000 ±.005				
		INCHES .0000 ±.0002				
		MILLIMETERS .00 ±.3				
		INCHES .0000 ±.0005				
		MILLIMETERS .000 ±.005				
		INCHES .0000 ±.0002				
		MILLIMETERS .00 ±.3				
		INCHES .0000 ±.0005				
		MILLIMETERS .000 ±.005				
		INCHES .0000 ±.0002				
		MILLIMETERS .00 ±.3				
		INCHES .0000 ±.0005				
		MILLIMETERS .000 ±.005				
		INCHES .0000 ±.0002				
		MILLIMETERS .00 ±.3				
		INCHES .0000 ±.0005				
		MILLIMETERS .000 ±.005				
		INCHES .0000 ±.0002				
		MILLIMETERS .00 ±.3				
		INCHES .0000 ±.0005				
		MILLIMETERS .000 ±.005				
		INCHES .0000 ±.0002				
		MILLIMETERS .00 ±.3				
		INCHES .0000 ±.0005				
		MILLIMETERS .000 ±.005				
		INCHES .0000 ±.0002				
		MILLIMETERS .00 ±.3				
		INCHES .0000 ±.0005				
		MILLIMETERS .000 ±.005				
		INCHES .0000 ±.0002				
		MILLIMETERS .00 ±.3				
		INCHES .0000 ±.0005				
		MILLIMETERS .000 ±.005				
		INCHES .0000 ±.0002				
		MILLIMETERS .00 ±.3				
		INCHES .0000 ±.0005				
		MILLIMETERS .000 ±.005				
		INCHES .0000 ±.0002				
		MILLIMETERS .00 ±.3				
		INCHES .0000 ±.0005				
		MILLIMETERS .000 ±.005				
		INCHES .0000 ±.0002				
		MILLIMETERS .00 ±.3				
		INCHES .0000 ±.0005				
		MILLIMETERS .000 ±.005				
		INCHES .0000 ±.0002				
		MILLIMETERS .00 ±.3				
		INCHES .0000 ±.0005				
		MILLIMETERS .000 ±.005				
		INCHES .0000 ±.0002				
		MILLIMETERS .00 ±.3				
		INCHES .0000 ±.0005				
		MILLIMETERS .000 ±.005				
		INCHES .0000 ±.0002				
		MILLIMETERS .00 ±.3				
		INCHES .0000 ±.0005				
		MILLIMETERS .000 ±.005				
		INCHES .0000 ±.0002				
		MILLIMETERS .00 ±.3				
		INCHES .0000 ±.0005				
		MILLIMETERS .000 ±.005				
		INCHES .0000 ±.0002				
		MILLIMETERS .00 ±.3				
		INCHES .0000 ±.0005				
		MILLIMETERS .000 ±.005				
		INCHES .0000 ±.0002				
		MILLIMETERS .00 ±.3				
		INCHES .0000 ±.0005				
		MILLIMETERS .000 ±.005				
		INCHES .0000 ±.0002				
		MILLIMETERS .00 ±.3				
		INCHES .0000 ±.0005				
		MILLIMETERS .000 ±.005				
		INCHES .0000 ±.0002				
		MILLIMETERS .00 ±.3				
		INCHES .0000 ±.0005				
		MILLIMETERS .000 ±.005				
		INCHES .0000 ±.0002				
		MILLIMETERS .00 ±.3				
		INCHES .0000 ±.0005				
		MILLIMETERS .000 ±.005				
		INCHES .0000 ±.0002				
		MILLIMETERS .00 ±.3				
		INCHES .0000 ±.0005				
		MILLIMETERS .000 ±.005				
		INCHES .0000 ±.0002				
		MILLIMETERS .00 ±.3				
		INCHES .0000 ±.0005				
		MILLIMETERS .000 ±.005				
		INCHES .0000 ±.0002				
		MILLIMETERS .00 ±.3				
		INCHES .0000 ±.0005				
		MILLIMETERS .000 ±.005				
		INCHES .0000 ±.0002				
		MILLIMETERS .00 ±.3				
		INCHES .0000 ±.0005				
		MILLIMETERS .000 ±.005				
		INCHES .0000 ±.0002				
		MILLIMETERS .00 ±.3				
		INCHES .0000 ±.0005				
		MILLIMETERS .000 ±.005				
		INCHES .0000 ±.0002				
		MILLIMETERS .00 ±.3				
		INCHES .0000 ±.0005				
		MILLIMETERS .000 ±.005				
		INCHES .0000 ±.0002				
		MILLIMETERS .00 ±.3				
		INCHES .0000 ±.0005				
		MILLIMETERS .000 ±.005				
		INCHES .0000 ±.0002				
		MILLIMETERS .00 ±.3				
		INCHES .0000 ±.0005				
		MILLIMETERS .000 ±.005				
		INCHES .0000 ±.0002				
		MILLIMETERS .00 ±.3				
		INCHES .0000 ±.0005				
		MILLIMETERS .000 ±.005				
		INCHES .0000 ±.0002				
		MILLIMETERS .00 ±.3				
		INCHES .0000 ±.0005				
		MILLIMETERS .000 ±.005				
		INCHES .0000 ±.0002				
		MILLIMETERS .00 ±.3				
		INCHES .0000 ±.0005				
		MILLIMETERS .000 ±.005				
		INCHES .0000 ±.0002				
		MILLIMETERS .00 ±.3				
		INCHES .0000 ±.0005				
		MILLIMETERS .000 ±.005				
		INCHES .0000 ±.0002				
		MILLIMETERS .00 ±.3				
		INCHES .0000 ±.0005				
		MILLIMETERS .000 ±.005				
		INCHES .0000 ±.0002				
		MILLIMETERS .00 ±.3				
		INCHES .0000 ±.0005				
		MILLIMETERS .000 ±.005				
		INCHES .0000 ±.0002				
		MILLIMETERS .00 ±.3				

3M™ THREE-WALL CONDO HEADER, 3000 SERIES
.100" X .100" LATCH/EJECTOR, RIGHT ANGLE



RECOMMENDED MOUNTING HOLE PATTERN

MOUNTING HARDWARE



PANHEAD THREAD CUTTING SCREW:
#4-24 X 5/16"
TYPE: USA STD BT, FEDERAL BG
MATERIAL: STAINLESS STEEL

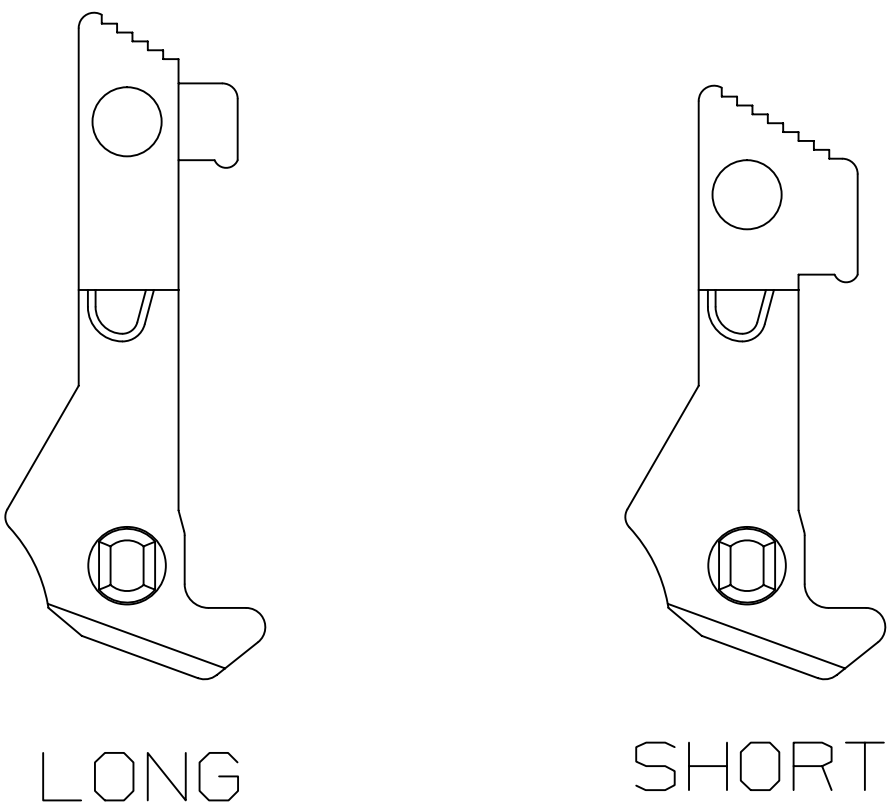
PART CUSTOMIZATION

THIS SPEC SHEET DETAILS OUR STANDARD OFFERING.

3M HAS SEVERAL CAPABILITIES THAT CAN PROVIDE A PART TAILORED TO YOUR SPECIFIC NEEDS. ASK YOUR 3M SALES REPRESENTATIVE OR CUSTOMER SERVICE FOR MORE DETAILS.

BOTH SNAP-IN AND ROLL PIN LATCHES MAY BE ORDERED SEPARATELY. SNAP-IN AND ROLL PIN STYLE LATCHES ARE DIMENSIONALLY AND FUNCTIONALLY EQUIVALENT. IF ORDERING SNAP-IN OR ROLL PIN STYLE LATCHES SEPARATELY, PLEASE USE THE BELOW CHART.

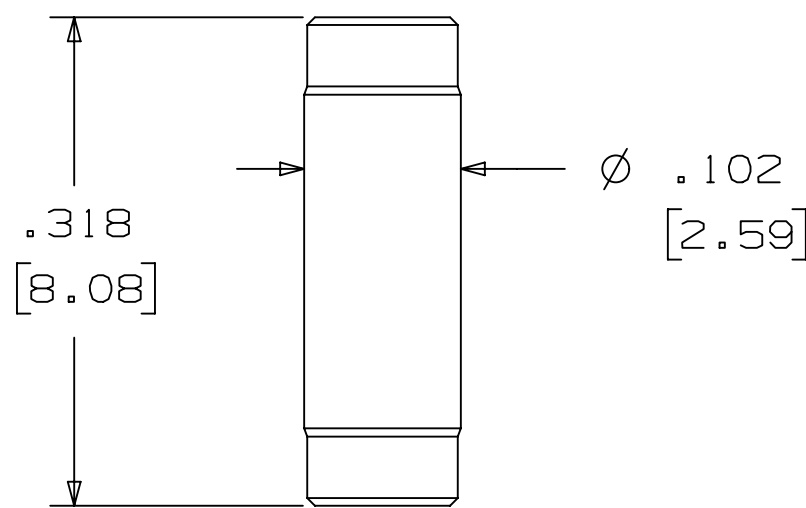
MATERIAL	SHORT LATCH	LONG LATCH	LATCH STYLE	COLOR
HIGH TEMP. (PCT)	N3505-2B	N3505-3B	ROLL PIN	BLACK
HIGH TEMP (PPA)	N3505-30B	N3505-31B	SNAP-IN	BLACK



SNAP-IN LATCHES

NOTE:
SNAP-IN LATCHES CAN ONLY BE ORDERED SEPARATELY AND ARE THE CUSTOMERS RESPONSIBILITY TO INSTALL.

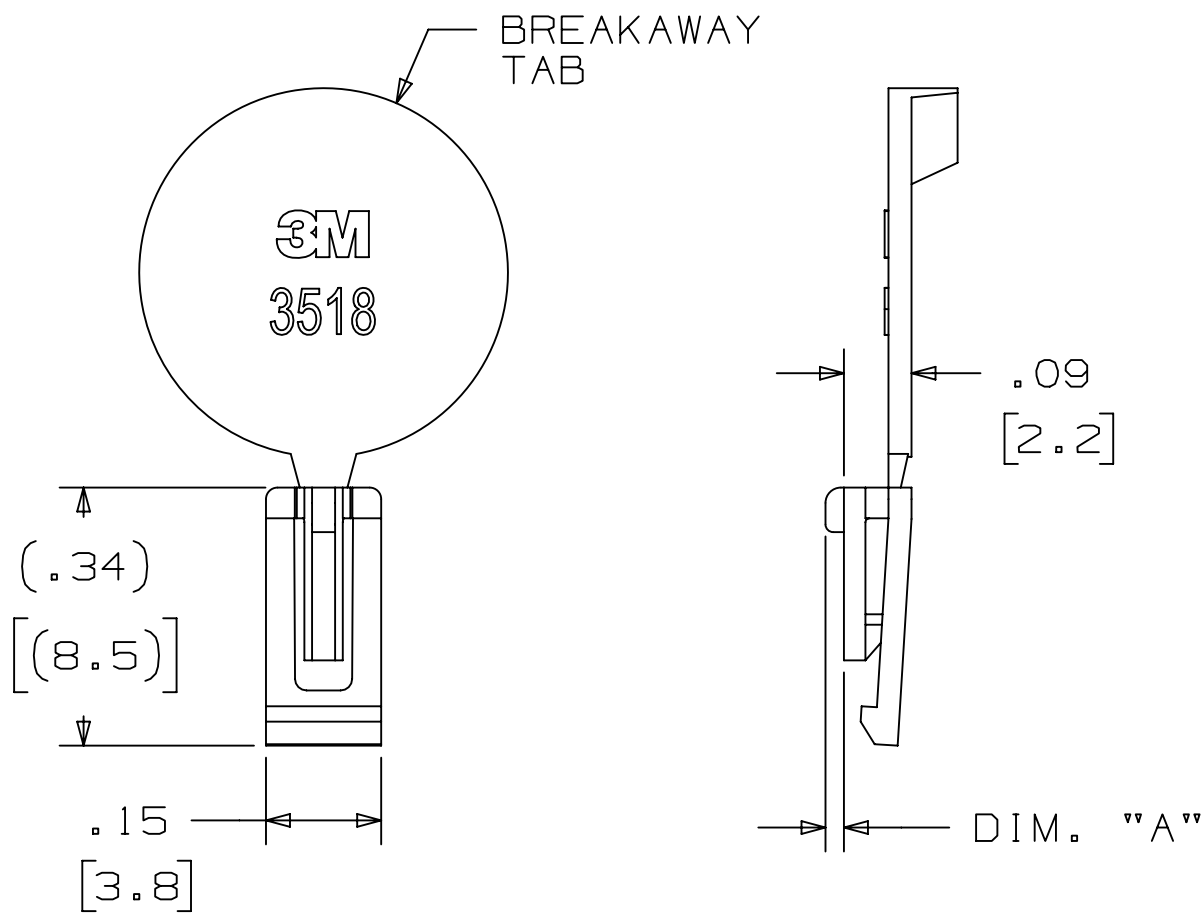
POLARIZING POST



3M PART NO.	MATERIAL	COLOR
3201-4	LCP	BLACK

NOTE:
INSERT POST INTO ONE MOUNTING HARDWARE HOLE ON BOTTOM OF HEADER. SET POST TO PROTRUDE .115 [2.92]

POLARIZING KEY



3M PART NO.	MATERIAL	COLOR	DIM. "A"
N3518	LCP	BLACK	.02

NOTE:
#2216 B/A SCOTCHWELD CAN BE USED TO ADHERE KEYS.

DESIGN REFERENCE	NEXT ASSEMBLY	REV	ECO	ISSUE DATE AND DESCRIPTION	DRFT	CHKD
XXXXXX	XXXXXX	1	ECO	JUN 22,2021 REVISED DIM'S AND NOTES	JNC	SAN
XXXXXX	XXXXXX	2	ECO	JAN 06,2021 REMOVED TIN LEAD PLATING	JNC	SAN
XXXXXX	XXXXXX	3	ECO	MAR 06,2015 REVISE ORDERING NUMBER	JNC	RS
XXXXXX	XXXXXX	4	ECO	AUG 05,2014 REVISED AND REDRAWN	JNC	RS
XXXXXX	XXXXXX	5	ECO	AUG 05,2014 REVISED AND REDRAWN	JNC	RS
XXXXXX	XXXXXX	6	ECO	AUG 05,2014 REVISED AND REDRAWN	JNC	RS
XXXXXX	XXXXXX	7	ECO	AUG 05,2014 REVISED AND REDRAWN	JNC	RS
XXXXXX	XXXXXX	8	ECO	AUG 05,2014 REVISED AND REDRAWN	JNC	RS
XXXXXX	XXXXXX	9	ECO	AUG 05,2014 REVISED AND REDRAWN	JNC	RS
XXXXXX	XXXXXX	10	ECO	AUG 05,2014 REVISED AND REDRAWN	JNC	RS
XXXXXX	XXXXXX	11	ECO	AUG 05,2014 REVISED AND REDRAWN	JNC	RS
XXXXXX	XXXXXX	12	ECO	AUG 05,2014 REVISED AND REDRAWN	JNC	RS
XXXXXX	XXXXXX	13	ECO	AUG 05,2014 REVISED AND REDRAWN	JNC	RS
XXXXXX	XXXXXX	14	ECO	AUG 05,2014 REVISED AND REDRAWN	JNC	RS
XXXXXX	XXXXXX	15	ECO	AUG 05,2014 REVISED AND REDRAWN	JNC	RS
XXXXXX	XXXXXX	16	ECO	AUG 05,2014 REVISED AND REDRAWN	JNC	RS
XXXXXX	XXXXXX	17	ECO	AUG 05,2014 REVISED AND REDRAWN	JNC	RS
XXXXXX	XXXXXX	18	ECO	AUG 05,2014 REVISED AND REDRAWN	JNC	RS
XXXXXX	XXXXXX	19	ECO	AUG 05,2014 REVISED AND REDRAWN	JNC	RS
XXXXXX	XXXXXX	20	ECO	AUG 05,2014 REVISED AND REDRAWN	JNC	RS

3M	Center	St. Paul,	MN 55144
© 3M COPYRIGHT 2021 This document and the information it contains are 3M property and may not be reproduced or further distributed without 3M permission, or used or disclosed other than for 3M authorized purposes. All rights reserved.			
TITLE THREE-WALL CONDO HEADER, .100 X .100 LATCH/EJECT, RA			
CAGE NUMBER	SIZE	DRAWING NO.	REV.
D	78-5100-0773-1	M	
MODEL	3400	LISTS	YES NO SHT 3 OF 4

3M™ THREE-WALL CONDO HEADER, 3000 SERIES

.100" X .100" LATCH/EJECTOR, RIGHT ANGLE

Regulatory: For regulatory information about this product, visit 3M.com/regs or contact your 3M representative.

Technical Information: The technical information, recommendations and other statements contained in this document are based upon tests or experience that 3M believes are reliable, but the accuracy or completeness of such information is not guaranteed.

Product Use: Many factors beyond 3M's control and uniquely within user's control can affect the use and performance of a 3M product in a particular application. Given the variety of factors that can affect the use and performance of a 3M product, user is solely responsible for evaluating the 3M product and determining whether it is fit for a particular purpose and suitable for user's method of application.

Warranty, Limited Remedy, and Disclaimer: Unless an additional warranty is specifically stated on the applicable 3M product packaging or product literature, 3M warrants that each 3M product meets the applicable 3M product specification at the time 3M ships the product. 3M MAKES NO OTHER WARRANTIES OR CONDITIONS, EXPRESS OR IMPLIED, INCLUDING, BUT NOT LIMITED TO, ANY IMPLIED WARRANTY OR CONDITION OF MERCHANTABILITY OR FITNESS FOR A PARTICULAR PURPOSE OR ANY IMPLIED WARRANTY OR CONDITION ARISING OUT OF A COURSE OF DEALING, CUSTOM OR USAGE OR TRADE. If the 3M product does not conform to this warranty, then the sole and exclusive remedy is, at 3M's option, replacement of the 3M product or refund of the purchase price.

Limitation of Liability: Except where prohibited by law, 3M will not be liable for any loss or damage arising from the 3M product, whether direct, indirect, special, incidental or consequential, regardless of the legal theory asserted, including warranty, contract, negligence or strict liability.

3M Company
Electronics Materials Solutions Division
13011 McCallen Pass, Bldg. C
Austin, TX 78753-5380
1-800-225-5373
www.3M.com/interconnect

M	97909	JUN 22,2021	JNC	SAN
L	93619	JAN 06,2021	JNC	SAN
K	60056	MAR 06,2015	JNC	RS
J	56068	AUG 05,2014	JNC	RS
REV	ECO	ISSUE DATE AND DESCRIPTION	DRFT	CHKD
DRFT	CASTIGLIONE	DATE AUG 05,2014	MFG	DATE
CHKD		DATE	APPR. R. SCHERER	DATE SEP 05,2014
DIVISION Interconnect Solutions		DIVISION CODE EMSD		
DO NOT SCALE DRAWING	SCALE 4 1	TOLERANCES EXCEPT AS NOTED		
THIRD ANGLE PROJECTION		INCHES .0 ±.1 .00 ±.01 .000 ±.005 .0000 ±.0002		
INTERPRET PER ASME Y14.5 - 2018		MILLIMETERS 0 ±2 .0 ±.3 .00 ±.13 .000 ±.005		
MAX. SURFACE ROUGHNESS		CAGE NUMBER		
ALL SURFACES		SIZE		
MARKED ONLY		DRAWING NO.		
		REV.		
		MODEL 3400		
		DET. LISTS		
		YES NO		
		SHT 4 OF 4		

Mouser Electronics

Authorized Distributor

Click to View Pricing, Inventory, Delivery & Lifecycle Information:

3M:

[N3433-D302RB](#) [N3433-D303RB](#) [N3428-5305EB](#) [N3431-D202RB](#) [N3372-D202RB](#) [N3428-D302RB](#) [N3429-D202RB](#)
[N3431-D002RB](#) [N3431-D302RB](#) [N3432-D302RB](#) [N3433-D202RB](#) [N3793-6305EB](#)