

8

7



5

4

$$\left(\begin{array}{c} \vdots \\ \vdots \\ \vdots \end{array} \right)$$

Z

1

1. MATERIAL:
INSULATION: 14 PIN: PPS, 26 PIN: LCP
COLOR: BLACK, UL94V-O

CONTACT: COPPER ALLOY
PLATING:
SEE ORDERING INFO SHEET 2

SHROUD & LATCH HOOK: STEEL
PLATING: NICKEL

GROUND LOCK: COPPER ALLOY
PLATING: SEMI-BRIGHT TIN OVER NICKEL

LOCK SCREW: STEEL
PLATING: NICKEL

ALIGNMENT PLATE: PPS
COLOR: BLACK, UL94V-O

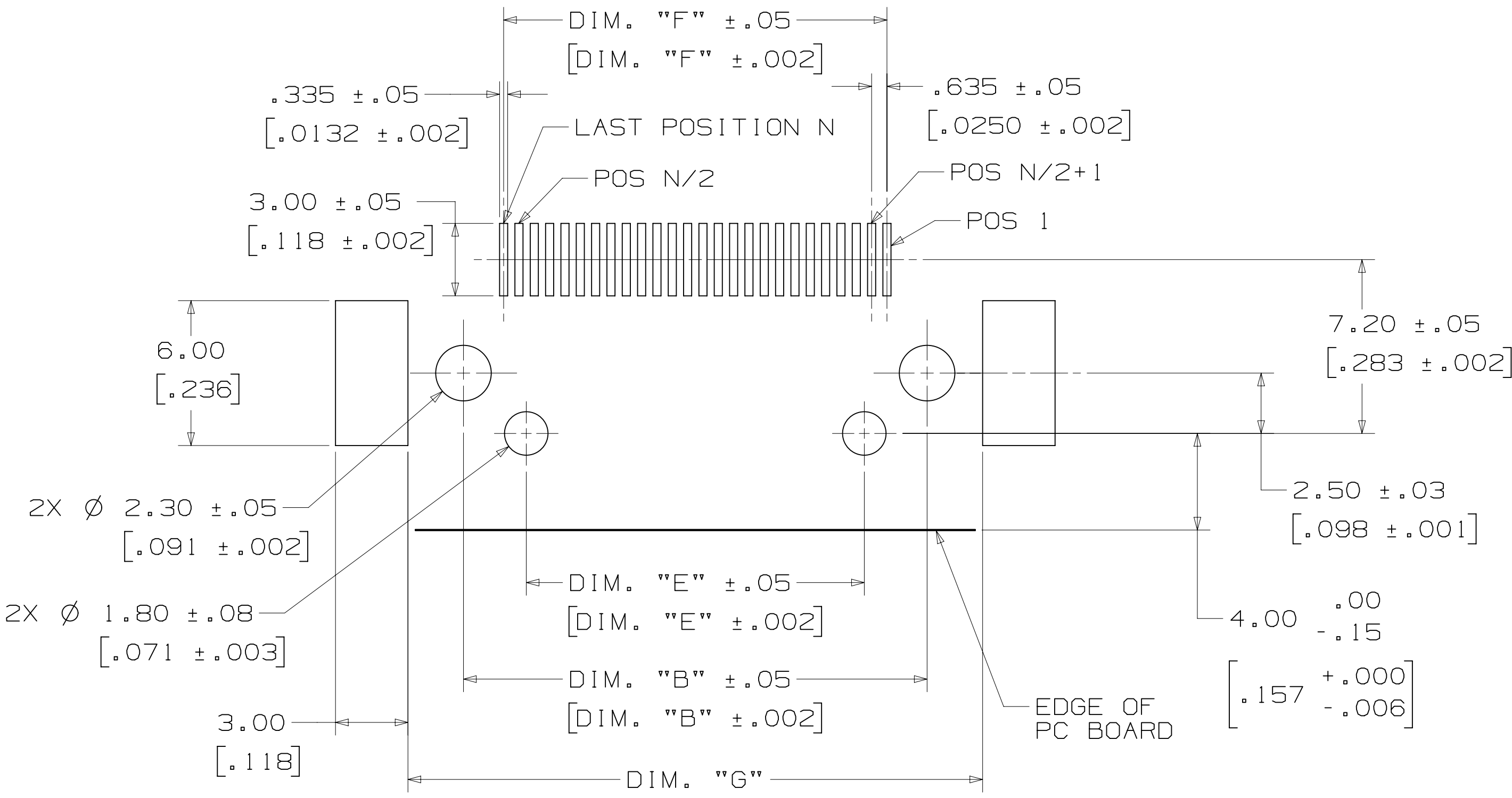
EARTH PLATE: COPPER ALLOY
PLATING: TIN

HEX NUT: BRASS
2. MARKING: 3M LOGO AND PART NUMBER.
3. ELECTRICAL:
CURRENT RATING: 0.5 A
INSULATION RESISTANCE: 500 M Ω MIN AT 250 V_{DC}
WITHSTANDING VOLTAGE: 350 V_{AC} FOR 1 MINUTE
4. ENVIRONMENTAL:
TEMPERATURE RATING:
-40°C TO +70°C
PROCESS RATING:
REFLOW: PREHEAT 150° TO 180°C,
90 TO 120 SECONDS
SOLDERING: OVER 220°C,
30 TO 60 SECONDS, PEAK TEMPERATURE
IS 250°C MAX.
SOLDER IRON: 380°C MAX, 3 SECONDS MAX.
5. IN THE EVENT OF CONFLICT BETWEEN THIS DATA
AND THAT CONTAINED IN THE PRODUCT
SPECIFICATION, THE PRODUCT SPECIFICATION
TAKES PRECEDENT.
6. FOR VARIOUS PANEL THICKNESS JACKSOCKETS
REFER TO TS-0142.
7. SEE REGULATORY INFORMATION APPENDIX (RIA)
IN THE "RoHS COMPLIANCE" SECTION OF
WWW.3MCONNECTOR.COM FOR COMPLIANCE INFORMATION.

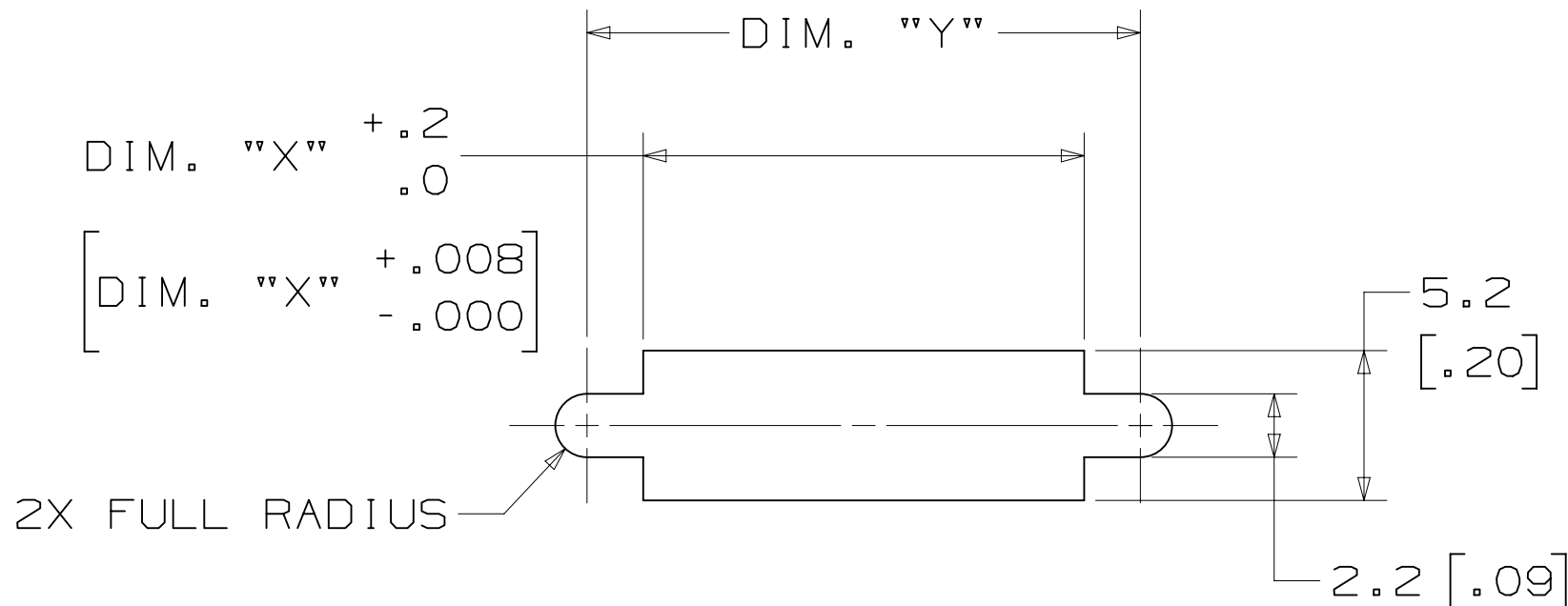
78-5100-2125-2	F
DRAWING NUMBER	REVISION

/

3M™ Shrunk Delta Ribbon (SDR) Connectors, 122 Series
.80 mm Surface Mount, Right Angle Receptacle, Shielded



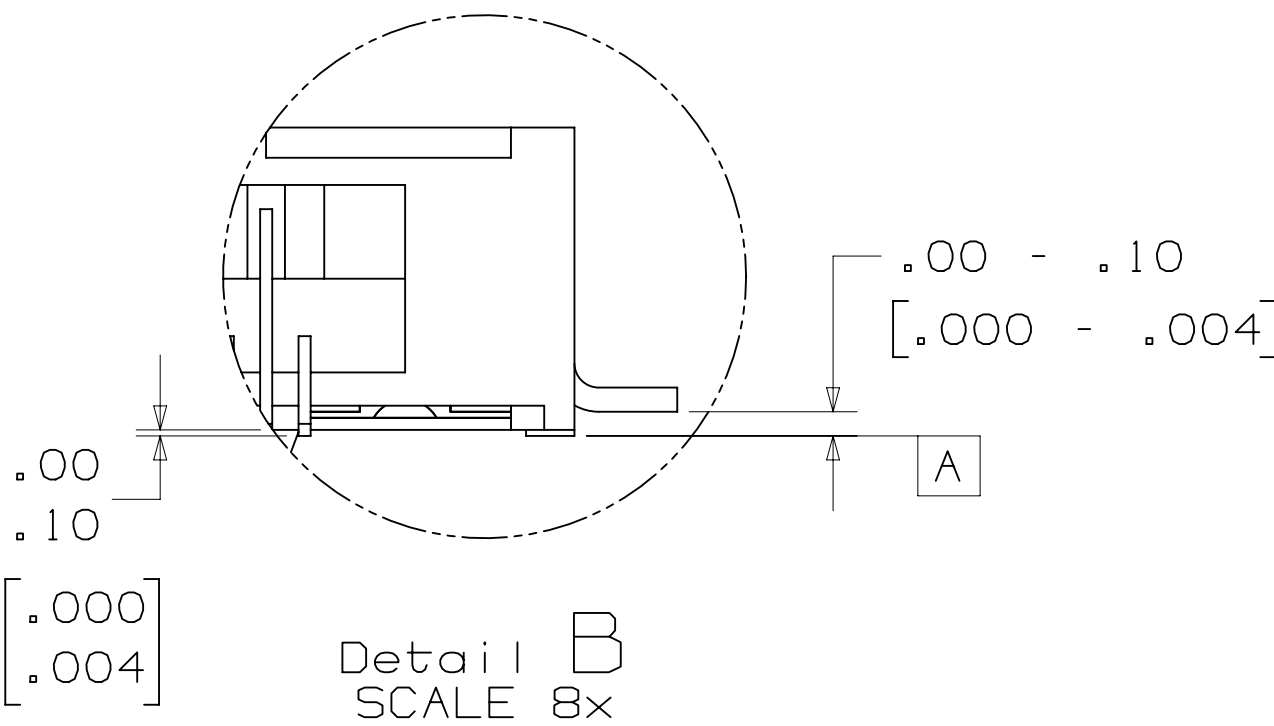
RECOMMENDED PC BOARD LAYOUT
(MOUNT SIDE VIEW)
N = TOTAL NUMBER OF POSITIONS
SCALE 6X



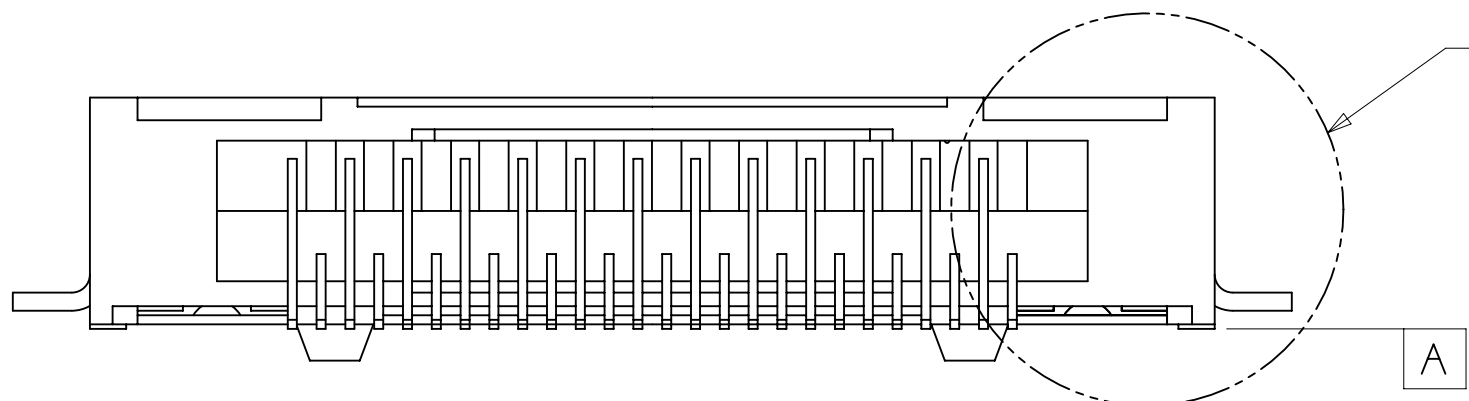
RECOMMENDED PANEL CUT-OUT
(MAXIMUM PANEL THICKNESS 1.2MM)

POSITION	DIM. "X"	DIM. "Y"
14	10.5 [.41]	14.4 [.57]
26	15.3 [.60]	19.2 [.76]

RECOMMENDED PANEL CUT-OUT DIMENSION TABLE
TABLE 2

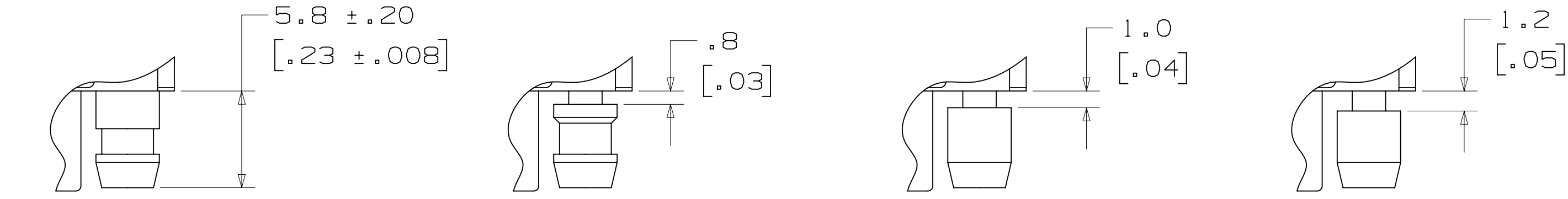


Detail B
SCALE 8x



VIEW A-A
SCALE 6X

THE DIMENSION OF PIN TAILS LOWER SURFACE TO DATUM "A" SURFACE: 0.00 TO 0.10 [.000 TO .004].
NOTE: THE CONNECTOR SHOULD BE ON FLAT FIXTURE SURFACE WHEN THE DIMENSIONS ARE MEASURED.



12600-S-00
SEE NOTE

12600-S-08

12600-S-10

12600-S-12

JACKSOCKET
M2 X 0.4

NOTE: JACKSOCKET 12600-S-00 COMES FACTORY
INSTALLED IN CONNECTOR 122XX-8250-00FR.
IT IS FIXED WITH THREAD LOCKING ADHESIVE
AND CANNOT BE REMOVED.

PANEL THICKNESS	CONNECTOR	JACKSOCKET
NO PANEL	122XX-8250-00XX	FACTORY INSTALLED (SEE NOTE)
0.8±0.1MM	122XX-8200-00XX	12600-S-08 (ORDER SEPARATELY)
1.0±0.1MM	122XX-8200-00XX	12600-S-10 (ORDER SEPARATELY)
1.2±0.1MM	122XX-8200-00XX	12600-S-12 (ORDER SEPARATELY)

SELECTION TABLE FOR PANEL MOUNTING
TABLE 3

ORDERING INFORMATION:
122XX-82X0-00XX

CONTACT QUANTITY
(SEE TABLE 1)

PLATING OPTION:

FR = 50-100μ" NICKEL UNDERPLATE
30μ" GOLD MIN. WIPE AREA
FLASH GOLD TERM AREA (TAIL)

PL = 50-100μ" NICKEL UNDERPLATE
8μ" GOLD MIN. WIPE AREA
FLASH GOLD TERM AREA (TAIL)

SCREW LOCK OPTION: (SEE TABLE 3)
0=NONE

(R1A E1 & C1 APPLY)
5=WITH 12600-S-00 NON-REMOVABLE SCREW LOCK
(R1A E5 & C3 APPLY)

DESIGN REFERENCE	NEXT ASSEMBLY	REV	ECO	ISSUE DATE AND DESCRIPTION	DRFT	CHKD
122XX-82X0-00XX						
DIVISION	DIVISION CODE	DATE	DATE	DATE	DATE	DATE
Interconnect Solutions	ISD	JAN 07,2011	JAN 07,2011	JAN 07,2011	JAN 07,2011	JAN 07,2011
DO NOT SCALE DRAWING	SCALE 4/1	TOLERANCES EXCEPT AS NOTED				
THIRD ANGLE PROJECTION						
INTERPRET PER ASME Y14.5 - 1994						
MAX SURFACE ROUGHNESS						
12.5 SURFACES						
✓ MARKED ONLY						
MODEL	12200					
CAGE NUMBER	78-5100-2125-2					
SIZE	D					
DRAWING NO.	78-5100-2125-2					
REV.	F					
LISTS	YES					
NO						
SHT	2 OF 2					

Mouser Electronics

Authorized Distributor

Click to View Pricing, Inventory, Delivery & Lifecycle Information:

3M:

[12214-8250-00PL](#)