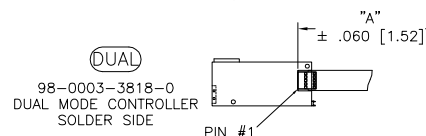
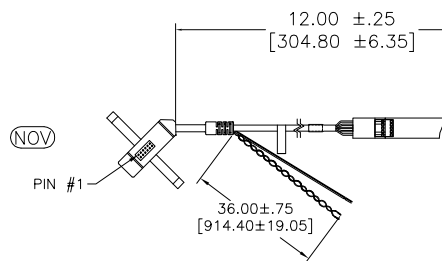
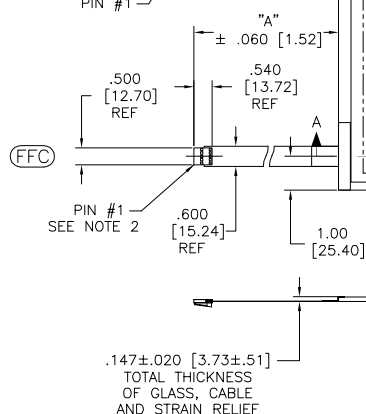
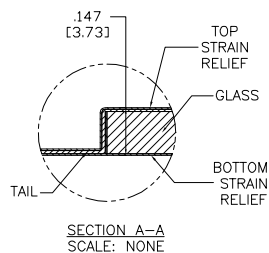
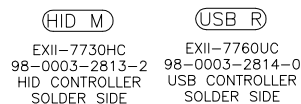
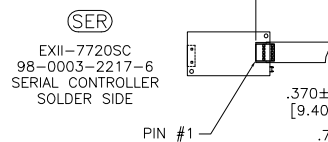


OGA DIAGONAL: 16.40 [416.59]
VA DIAGONAL: 15.68 [398.29]
PA DIAGONAL: 14.79 [375.72]



ESD CLAMSHELL CASE
IS USED WITH ALL
NOV, USB AND SER
TERMINATIONS.

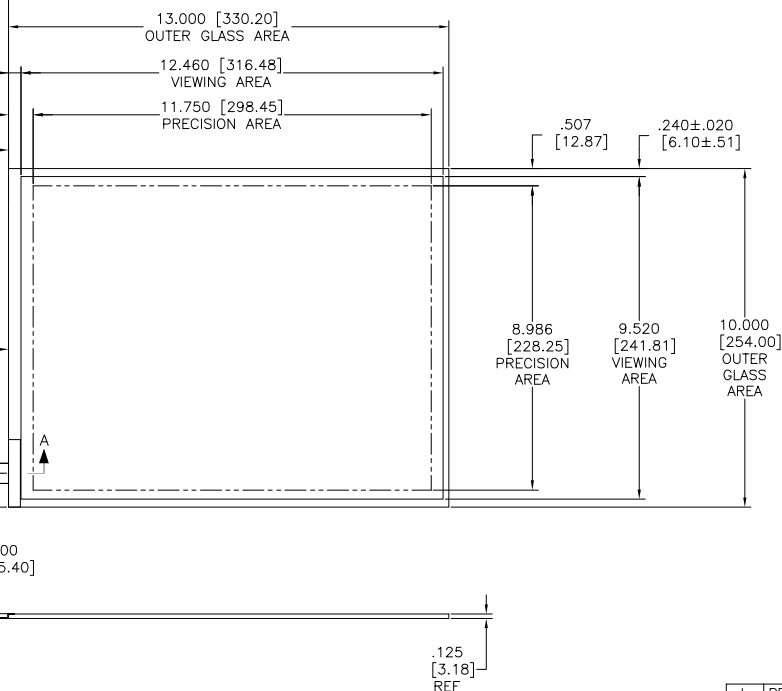


NOTES:

1. WEIGHT OF GLASS IN GRAMS: 639 ±10%
2. NICOMATIC HOUSING P/N: OL05
NICOMATIC RECEPTACLES (PINS) MATTE TIN PLATED P/N: 14106-12
HOUSING ORIENTED WITH LATCH DOWN

PINOUT	
1	LR
2	LL
3	SHLD
4	UL
5	UR

TOP LEVEL NUMBER	US 98 NUMBER	TYPE	DIM "A" (TOTAL GLASS TO CONNECTOR)	A/G FINISH	PROD SPEC
17-8031-203	98-0003-2511-2	FFC	4.27" [108.46]	AG500	23655
17-8031-204	98-0003-2513-8	FFC	6.00" [152.40]	AG500	23655
17-8031-205	98-0003-2514-6	FFC	8.00" [203.20]	AG500	23655
17-8031-206	98-0003-2515-3	NOV	SEE DWG	AG500	23655
17-8031-221	98-0003-2521-1	SER	4.27" [108.46]	AG500	23655
17-8031-223	98-0003-2522-9	SER	6.00" [152.40]	AG500	23655
17-8031-227	98-0003-2525-2	SER	8.00" [203.20]	AG500	23655
17-8031-218	98-0003-2519-5	USB R	4.27" [108.46]	AG500	23655
17-8031-226	98-0003-2919-7	USB R	8.00" [203.20]	AG500	23655
17-8031-230	98-0003-2921-3	HID M	8.00" [203.20]	AG500	23655
N/A	98-0003-3972-5	DUAL	8.00" [203.20]	AG500	23655
N/A	98-1100-0093-6	FFC	8.00" [203.20]	WC100	34523
N/A	98-1100-0094-4	USB R	8.00" [203.20]	WC100	34523



UNITS INCHES [MM]

TOLERANCES
UNLESS OTHERWISE SPECIFIED
.X ±
.XX ±.03 [.76]
.XXX ±.015 [.38]
ANGLES ±1°

THIRD ANGLE PROJECTION

DO NOT SCALE DRAWING

SCALE 1 = 1



3M TOUCH SYSTEMS
METHUEN, MA
USA
© COPYRIGHT 2005
THIS DOCUMENT IS COPYRIGHTED PROPERTY OF THE
3M COMPANY AND MAY NOT BE REPRODUCED
WITHOUT 3M WRITTEN PERMISSION OR USED OR
DISCLOSED FOR OTHER THAN 3M AUTHORIZED
PURPOSES.

DRAWN: K. CROWLEY 9/05

REV	REVISED PER CO 036099	DATE	SB
1	CHANGE NOTICE	2/13	SB
TITLE			
MARKETING DRAWING SCT32NN 15.68"			
CAD FORMAT		SHEET 1 OF 1	
SIZE	DOCUMENT NO.	REV	
C	TSD-28138	L	

Mouser Electronics

Authorized Distributor

Click to View Pricing, Inventory, Delivery & Lifecycle Information:

3M:

[98-0003-2525-2](#) [98-0003-2919-7](#)