

## .100" X .100" LATCH/EJECTOR, RIGHT ANGLE



X3XXX-DXXXXX

3M PART NUMBER:  
(SEE TABLE 1)

```
- TAIL:
02 = FOR .062 [ 1.57 ] THICK BOARD
03 = FOR .094 TO .125 [ 2.39 TO 3.18 ] THICK BOARD
```

3M IS A TRADEMARK OF 3M COMPANY.  
FOR TECHNICAL, SALES OR ORDERING  
INFORMATION CALL 800-225-5373

```

INSULATOR:
  MATERIAL: GLASS FILLED POLYESTER (PCT)
FLAMMABILITY: UL94V-0
  COLOR: BLACK
CONTACT:
  MATERIAL: COPPER ALLOY
  PLATING:
    UNDER PLATING: 100μ" [2.54μm] NICKEL-OVERALL
    WIPING AREA: 30μ" [0.76μm] AVG. GOLD
    SOLDER TAILS: 200μ" [5.08μm] TIN LEAD OR MATTE TIN (SEE ORDERING INFORMATION)
  MARKINGS: 3M LOGO, PART IDENTIFICATION NUMBER AND ORIENTATION TRIANGLE

```

CURRENT RATING: 1A (EIA 364-70)  
INSULATION RESISTANCE:  $>1 \times 10^9 \Omega$  AT 500 V<sub>DC</sub>  
WITHSTANDING VOLTAGE: 1,000V<sub>RMS</sub> AT SEA LEVEL

TEMPERATURE RATING: -55°C TO 105°C  
PROCESS RATING: 260°C, PER J-STD-020C, SINGLE PASS  
MOISTURE SENSITIVITY LEVEL: 1 (PER J-STD-020C)


- \* STACKED PINS CONSERVE SPACE ON THE CIRCUIT BOARD ALLOWING HIGHER DENSITY PACKAGING.
- \* PIN QUANTITY TO 128 GIVES DESIGN FLEXIBILITY WITH LATCHING.
- \* "HDI" ALTERNATIVE.
- \* THREE-WALL FITS IN VME BOARD STACKING CRITERIA.
- \* ACCEPTS STANDARD IDC SOCKETS.
- \* MATES WITH STANDARD FLAT CABLE HARNESSSES.
- \* HIGH TEMPERATURE INSULATOR SUITABLE FOR "NO LEAD" SOLDERING OPERATIONS.
- \* SUITABLE FOR REFLOW SOLDERING USING "PASTE IN HOLE" TECHNIQUES.

1. REGULATORY INFORMATION:  
ROHS COMPLIANT. SEE THE  
REGULATORY INFORMATION  
APPENDIX (RIA) IN THE  
"ROHS COMPLIANCE" SECTION  
OF [WWW.3MCONNECTORS.COM](http://WWW.3MCONNECTORS.COM) FOR  
COMPLIANCE INFORMATION.

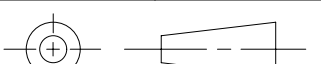
2 IN THE EVENT OF CONFLICT  
BETWEEN THIS DATA AND THAT  
CONTAINED IN THE PRODUCT  
SPECIFICATION, THE PRODUCT  
SPECIFICATION TAKES PRECEDENT.

3	NOTCHES A & C WILL ACCOMODATE 3M POLARIZING KEY: N3518.
---	--

4 MOUNTING HARDWARE:  
FROM SOLDER SIDE OF PC BOARD  
USE #4-24 THREAD CUTTING SCREW  
(3M PART #3341-5) WITH  
Ø .116 ( 2.95 ) MOUNTING HOLE.

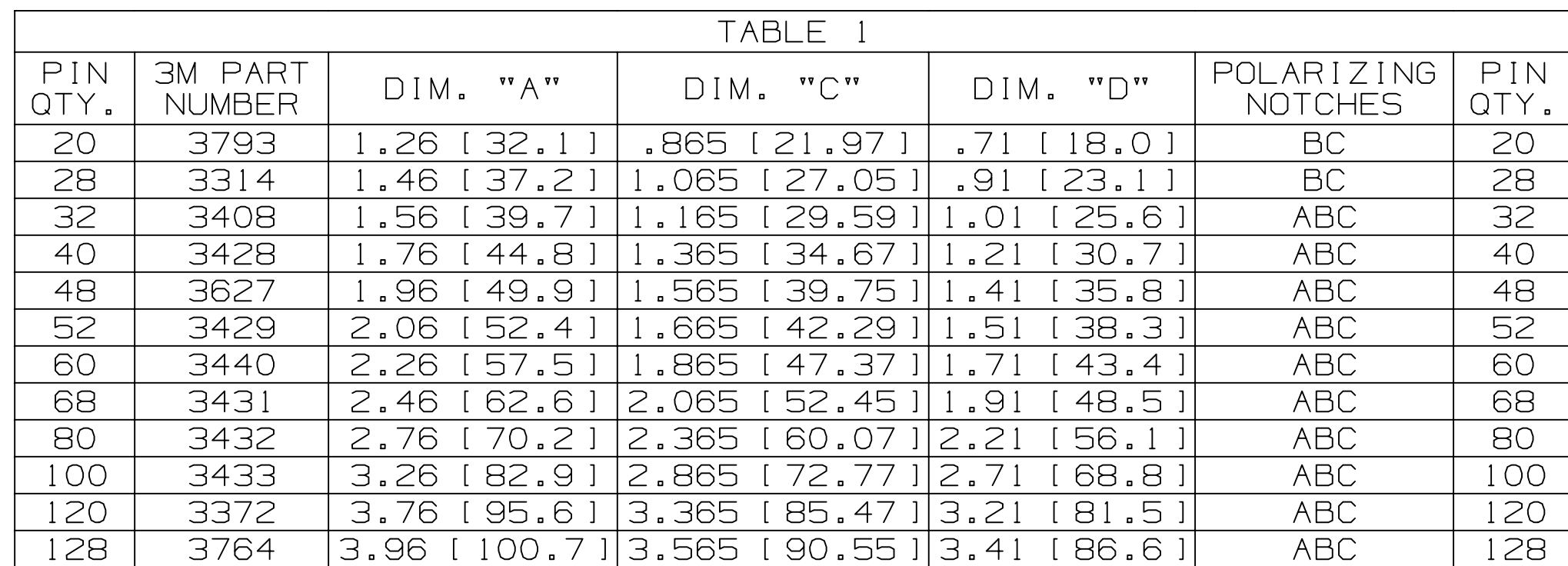
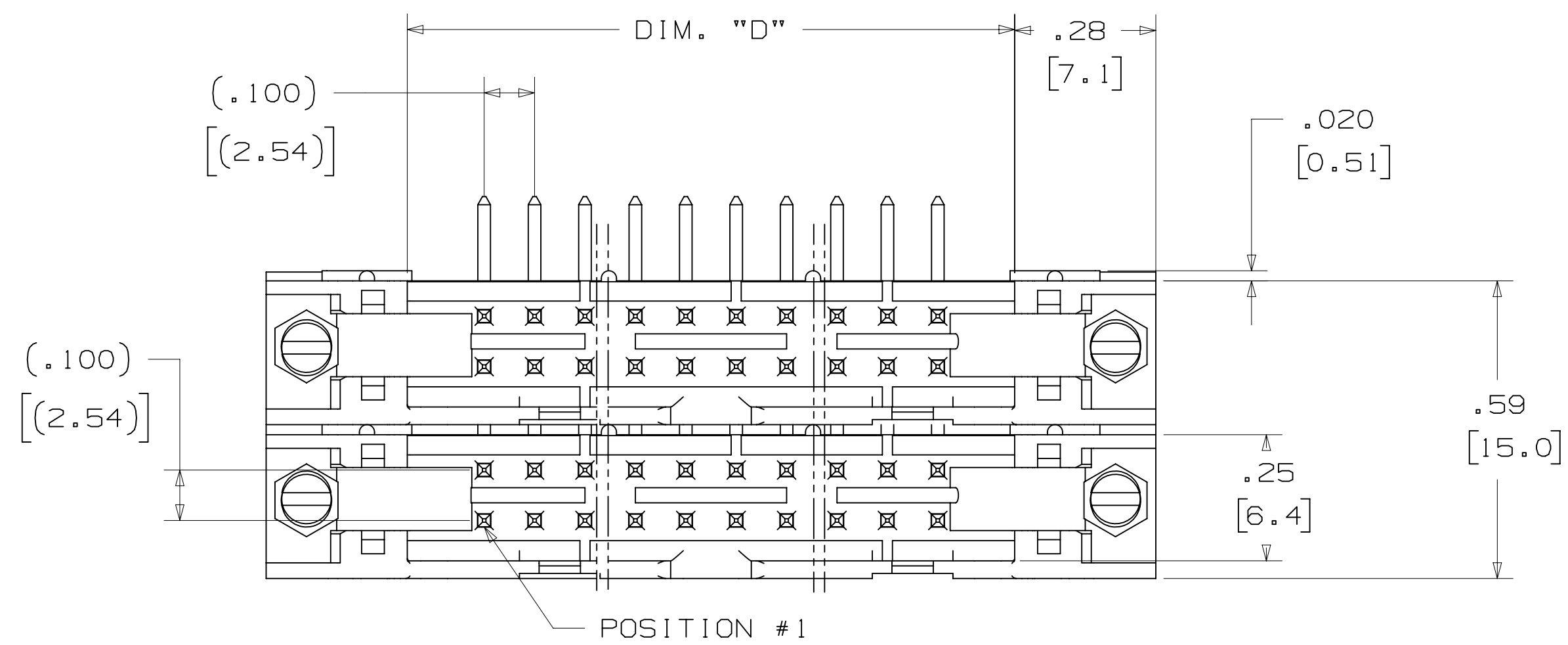
K	60056	MAR 06,2015			JNC	RS	
		REVISED ORDERING NUMBER					
J	56068	AUG 05,2014			JNC	RS	
		REVISED AND REDRAWN					
REV	ECO	ISSUE DATE AND DESCRIPTION			DRFT	CHKD	
DRFT	CAG1 L10NE	DATE	AUG 05,2014		MFG	DATE	
CHKD		DATE	APRIL 10, 2015		REV	SEP 05,2014	
© 3M COPYRIGHT 2015							
		This document and the information it contains are 3M property and should not be reproduced or further distributed without 3M permission, or used or disclosed other than for 3M authorized purposes. All rights reserved.					
TITLE							
HEADER, 3-WALL, CONDO, 100 X 100 LATCH/EJECTOR, RA							
CAGE NUMBER	SIZE DRAWING NO.					REV.	
D	D78-5100-0773-1					K	
MODEL	3000 SERIES		DET. LISTS	<input type="checkbox"/> YES <input checked="" type="checkbox"/> NO	SHT	1 OF 3	

DIMENSIONS: INCHES [ MM ]  
[ MM ] IS REF. ONLY


DESIGN REFERENCE		NEXT ASSEMBLY		REV	ECO	ISSUE DATE AND DESCRIPTION		DRFT	CHKD
REF. CODES				BY	CASTIGLIONE	AUG	05, 2014	WFG	DATE
				CHKD		DATE		APPROV	R. SCHERER
								DATE	SEP 05, 2014
DIVISION		DIVISION CODE		<p align="center">© 3M COPYRIGHT 2015</p> <p align="center">This document and the information it contains are 3M property and may not be reproduced or further distributed without 3M permission, or used or disclosed other than for 3M authorized purposes. All rights reserved.</p>					
Interconnect Solutions		EMSD							
DO NOT SCALE DRAWING	SCALE <u>2</u> 1	TOLERANCES EXCEPT AS NOTED							
THIRD ANGLE PROJECTION		INCHES							
		.0 ± .00 ± .01 .000 ± .005 .0000 ±		TITLE		HEADER, 3-WALL, CONDO, .100 X .100 LATCH/EJECTOR, RA			
INTERPRET PER ASME Y14.5 - 2009		MILLIMETERS		CAGE NUMBER		SIZE		DRAWING NO.	
<del>MAX SURFACE ROUGHNESS</del> <del>MAX SURFACES</del> <input checked="" type="checkbox"/> MARKED ONLY		.0 ± .00 ± .13 .000 ±		<b>D</b>		78-5100-0773-1		REV. K	
		UNLESS		MODEL		3000 SERIES		DET. <input type="checkbox"/> LISTS <input type="checkbox"/> YES <input checked="" type="checkbox"/> NO <input type="checkbox"/> SHT 1 OF 3	

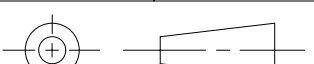
**UL**<sup>®</sup>  
**US**  
UL FILE NO: E68080

.100" X .100" LATCH/EJECTOR, RIGHT ANGLE

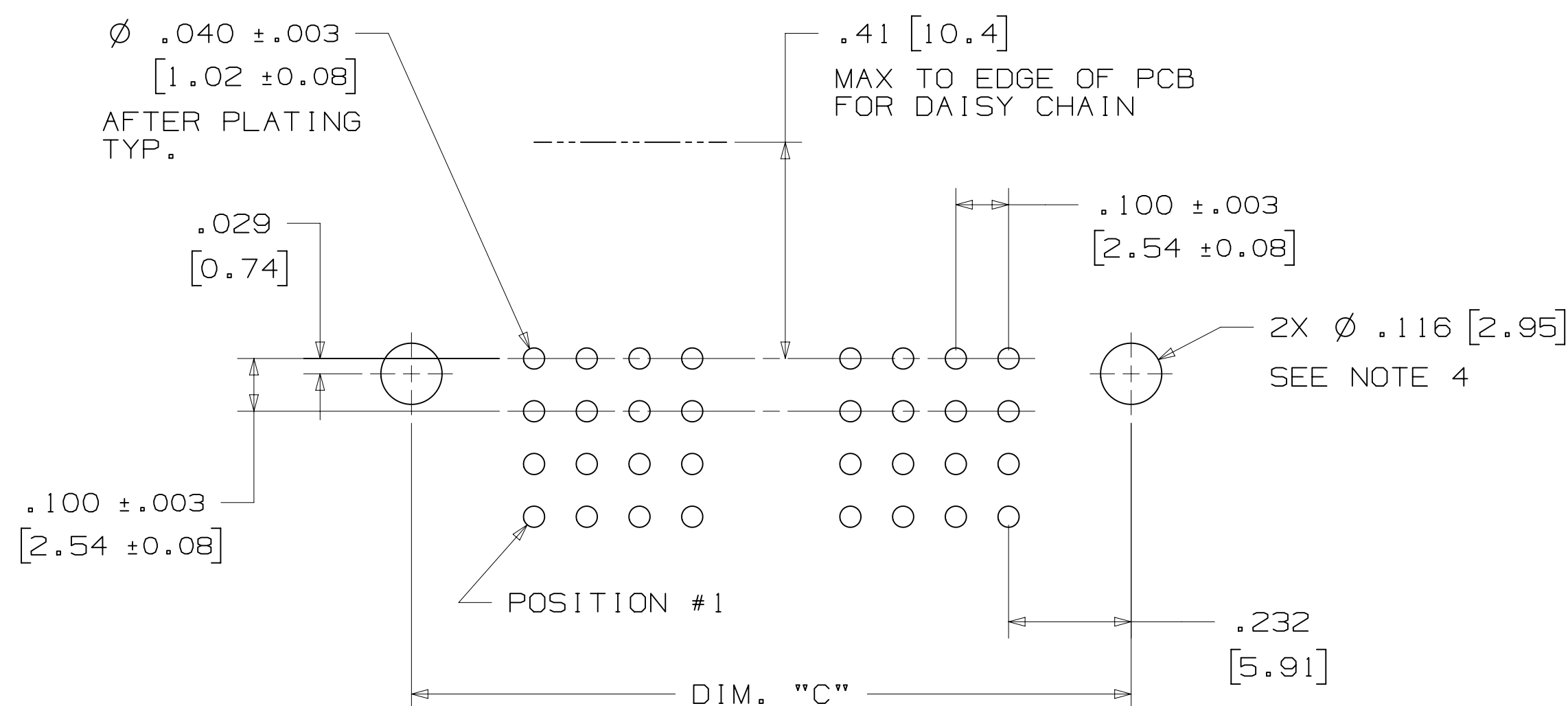


NOTE :  
.112 [ 2.84 ] TAIL LENGTH SUITABLE FOR  
.062 [ 1.57 ] THICK PC BOARD.

K	60056	MAR 06,2015		JNC	RS
		REVISED ORDERING NUMBER			
J	56068	AUG 05,2014		JNC	RS
		REVISED AND REDRAWN			
REV	ECO	ISSUE DATE AND DESCRIPTION		DRFT	CHKD
DRFT CASTIGLIONE		DATE AUG 05,2014	MFG	DATE	
CHKD		DATE	APPROVAL R. SCHERER	DATE SEP 05,2014	
 3M Center St. Paul, MN 55144		© 3M COPYRIGHT 2015 This document and the information it contains are 3M property and may not be reproduced or further distributed without 3M permission, or used or disclosed other than for 3M authorized purposes. All rights reserved.			
TITLE					
HEADER, 3-WALL, CONDO, .100 X .100 LATCH/EJECTOR, RA					
CAGE NUMBER	SIZE	DRAWING NO.			REV.
D	1	78-5100-0773-1			K
MODEL		3000 SERIES		DET. LISTS <input type="checkbox"/> YES <input checked="" type="checkbox"/> NO SHT 2 OF 3	

DESIGN REFERENCE		NEXT ASSEMBLY		REV		ECO		ISSUE DATE AND DESCRIPTION		DRFT		CHKD	
ACR CODES				DPT		DATE		MFG		DATE			
				CAST		IGL		05, 2014					
				CHKD		DATE		APPRV		DATE		SEP 05, 2014	
								R, SCHERER					
DIVISION		DIVISION CODE						© 3M COPYRIGHT 2015					
Interconnect Solutions		EMSD						3M Center St. Paul, MN 55144					
DO NOT SCALE DRAWING		SCALE 4 1		TOLERANCES EXCEPT AS NOTED				This document and the information it contains are 3M property and may not be reproduced or further distributed without 3M permission, or used or disclosed other than for 3M authorized purposes. All rights reserved.					
		INCHES :0 :00 :.01 :000 :.005 :0000 :		TITILE				HEADER, 3-WALL, CONDO, .100 X .100 LATCH/EJECTOR, RA					
THIRD ANGLE PROJECTION		MILLIMETERS 0 :0 :.3 :00 :.13		CAGE		SIZE		DRAWING NO.				REV.	
INTERPRET PER ASME Y14.5 - 2009				NUMBER		D		078-5100-0773-1				K	
MAX SURFACE ROUGHNESS				MODEL		3000 SERIES		DET.		LISTS		YES X NO	
MIN SURFACES				ANGLE								SHT 2 OF 3	
✓ <input type="checkbox"/> MARKED ONLY													

## .100" X .100" LATCH/EJECTOR, RIGHT ANGLE

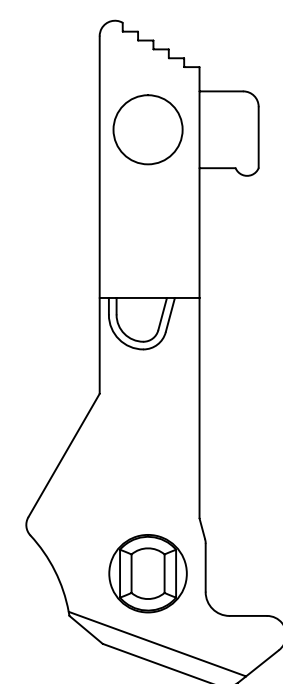


## PART CUSTOMIZATION

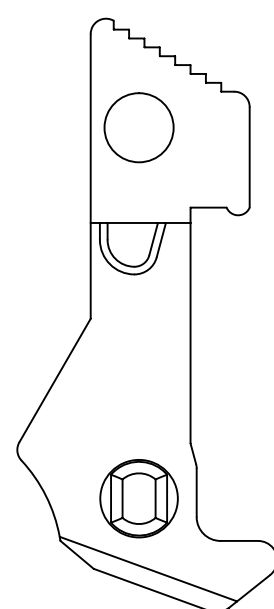
3M HAS SEVERAL CAPABILITIES THAT CAN PROVIDE A PART TAILORED TO YOUR SPECIFIC NEEDS. ASK YOUR 3M SALES REPRESENTATIVE OR CUSTOMER SERVICE FOR MORE DETAILS.

BOTH SNAP-IN AND ROLL PIN LATCHES MAY BE ORDERED SEPARATELY. SNAP-IN AND ROLL PIN STYLE LATCHES ARE DIMENSIONALLY AND FUNCTIONALLY EQUIVALENT. IF ORDERING SNAP-IN OR ROLL PIN STYLE LATCHES SEPARATELY, PLEASE USE THE BELOW CHART.

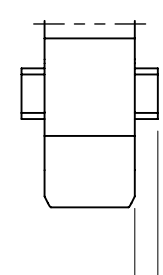
MATERIAL	SHORT LATCH	LONG LATCH	LATCH STYLE	COLOR
HIGH TEMP. (PCT)	N3505-2B	N3505-3B	ROLL PIN	BLACK
HIGH TEMP. (PPA)	N3505-30B	N3505-31B	SNAP-IN	BLACK



LONG



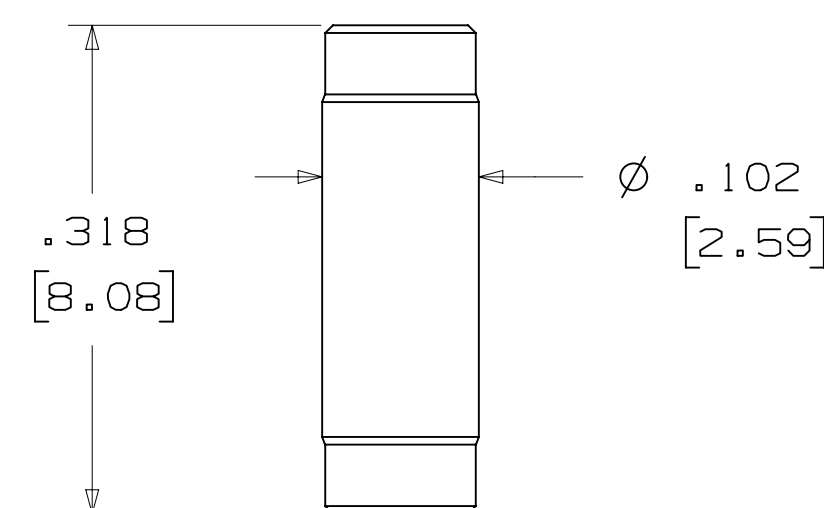
SHORT



-. (.03)  
[(0.8)]  
TYP.

NOTE:  
SNAP-IN LATCHES CAN ONLY BE ORDERED  
SEPARATELY AND ARE THE CUSTOMERS  
RESPONSIBILITY TO INSTALL.

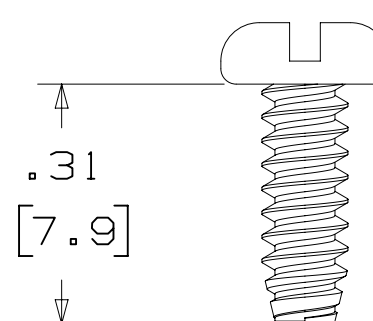
## POLARIZING POST



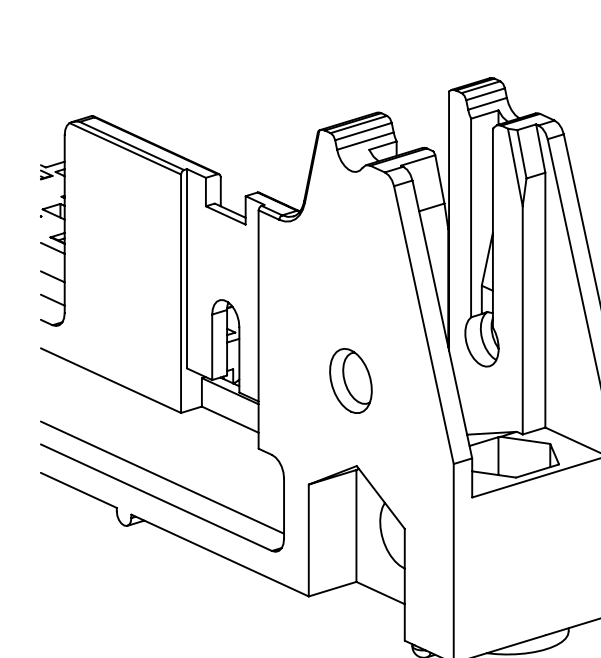
3M PART NO.	MATERIAL	COLOR
3201 - 4	LCP	BLACK

NOTE:  
INSERT POST INTO ONE MOUNTING  
HARDWARE HOLE ON BOTTOM OF HEADER.  
SET POST TO PROTRUDE .115 [2.92]

## MOUNTING HARDWARE

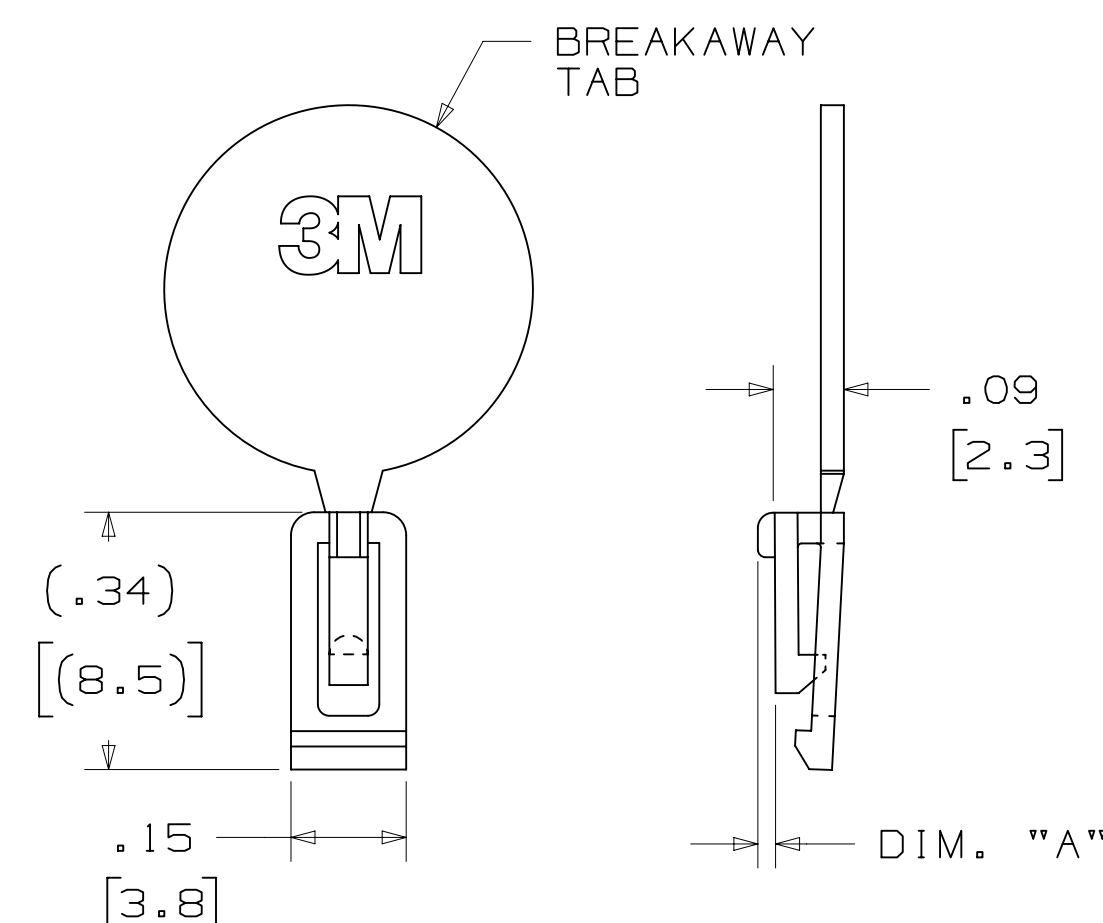


3341-5  
(INSTALL FROM BOTTOM OF BOARD)  
PANHEAD THREAD CUTTING SCREW:  
#4-24 X 5/16"  
TYPE: USA STD BT, FEDERAL BG  
MATERIAL: STAINLESS STEEL



#4-24 TYPE BT SELF THREADING SCREW  
WHEN USING LATCHES, MAXIMUM LENGTH  
OF SCREW IS .250 INCHES PLUS  
THICKNESS OF THE BOARD.  
TORQUE FOR EACH SCREW IS 3-5 INCH LBS.

## POLARIZING KEY



3M PART NO.	MATERIAL	COLOR	DIM. "A"
N3518	LCP	BLACK	.02

NOTE :  
#2216 B/A SCOTCHWELD CAN BE USED TO  
ADHERE KEYS.

		K	60056	MAR 06,2015		JNC	RS
		J	56068	AUG 05,2014		JNC	RS
		REVISED AND REDRAWN					
DESIGN REFERENCE		NEXT ASSEMBLY		REV	ECO	ISSUE DATE AND DESCRIPTION	DRFT
<div> <div>ACCESS CODES</div> <div></div> </div>		<div> <div>DRFT</div> <div>CST</div> <div>GLG</div> <div>IONE</div> </div>		<div> <div>DATE</div> <div>AUG 05,2014</div> </div>		<div> <div>MPG</div> <div></div> </div>	
		CHKD		DATE		DATE SEP 05,2014	
DIVISION		DIVISION CODE		© 3M COPYRIGHT 2015			
Interconnect Solutions		EMSD		<div> <div>3M</div> <div>3M Center St. Paul, MN 55144</div> </div>			
DO NOT SCALE		TOLERANCES EXCEPT AS NOTED		<div> <div>This document and the information it contains are 3M property and may not be reproduced or further distributed without the express written permission, or used or disclosed other than for 3M authorized purposes. All rights reserved.</div> </div>			
DRAWING		INCHES		TITLE			
<div> <div>4</div> </div>		<div> <div>0.0 ±</div> <div>0.00 ± .01</div> <div>0.000 ± .005</div> <div>0.0000 ±</div> </div>		<div> <div>HEADER, 3-WALL,</div> <div>CONDO, .100 X .100</div> <div>LATCH/EJECTOR, RA</div> </div>			
THIRD ANGLE PROJECTION		MILLIMETERS		CAGE NUMBER			
<div> <div>INTERPRET PER</div> <div>ASME Y14.5 - 2009</div> </div>		<div> <div>0 ±</div> <div>0.00 ± .3</div> <div>0.00 ± .13</div> <div>0.000 ±</div> </div>		<div> <div>SIZE</div> <div>DRAWING NO.</div> </div>			
<div> <div>MAX SURFACE ROUGHNESS</div> <div>12.5 SURFACES</div> </div>		<div> <div>MARKED ONLY</div> <div>ANGLES</div> </div>		<div> <div>D</div> <div>78-5100-0773-1</div> </div>			
				MODEL			
				3000 SERIES			
				<div> <div>DET</div> <div>ITS</div> <div>OYES</div> <div>NO</div> </div>			
				<div> <div>SHT</div> <div>3 OF</div> </div>			

# Mouser Electronics

Authorized Distributor

Click to View Pricing, Inventory, Delivery & Lifecycle Information:

[3M:](#)

[N3429-6603UG](#) [N3432-6603UG](#) [3433-6605](#) [3627-5503UG](#) [3793-5602UG](#) [N3314-650FUG](#) [N3314-650FRB](#) [N3433-6305RB](#) [3314-6502UG](#) [3428-6602UG](#) [3432-6303UC](#) [3627-6602UG](#) [3627-6603UG](#) [N3793-2602](#) [N3428-5602UG](#) [3627-6502UG](#) [3431-6305](#) [N3433-1602](#) [3764-6305](#) [3440-6503UG](#) [3793-6305](#) [N3408-1602RB](#) [N3428-1602RB](#) [N3431-3005EB](#) [N3433-1602RB](#) [N3440-530FRB](#) [N3793-2502RB](#) [N3793-1502RB](#) [N3431-1602RB](#) [N3433-L603RB](#)