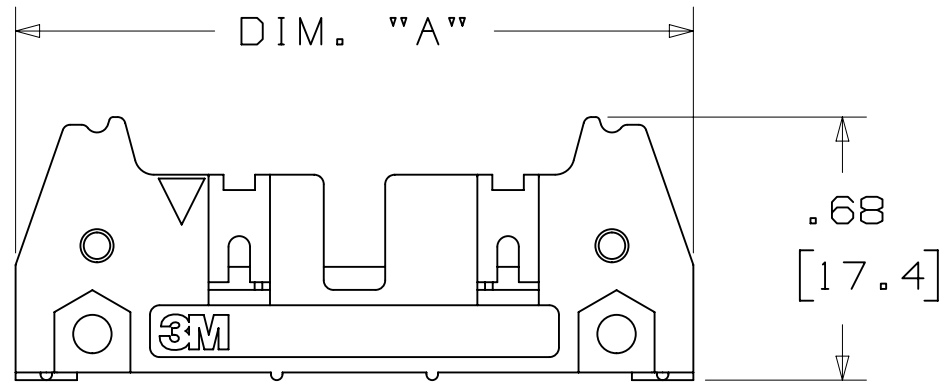


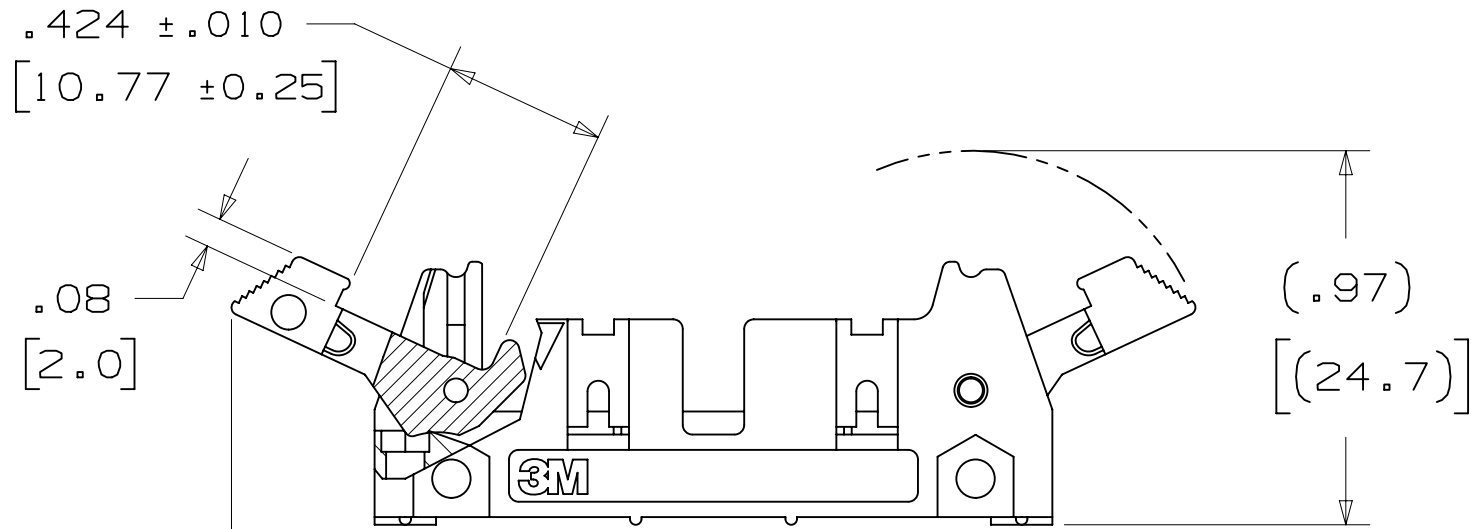
3M™ THREE-WALL HEADER, 3000 SERIES

.100" X .100" LATCH/EJECTOR, STRAIGHT AND RIGHT ANGLE



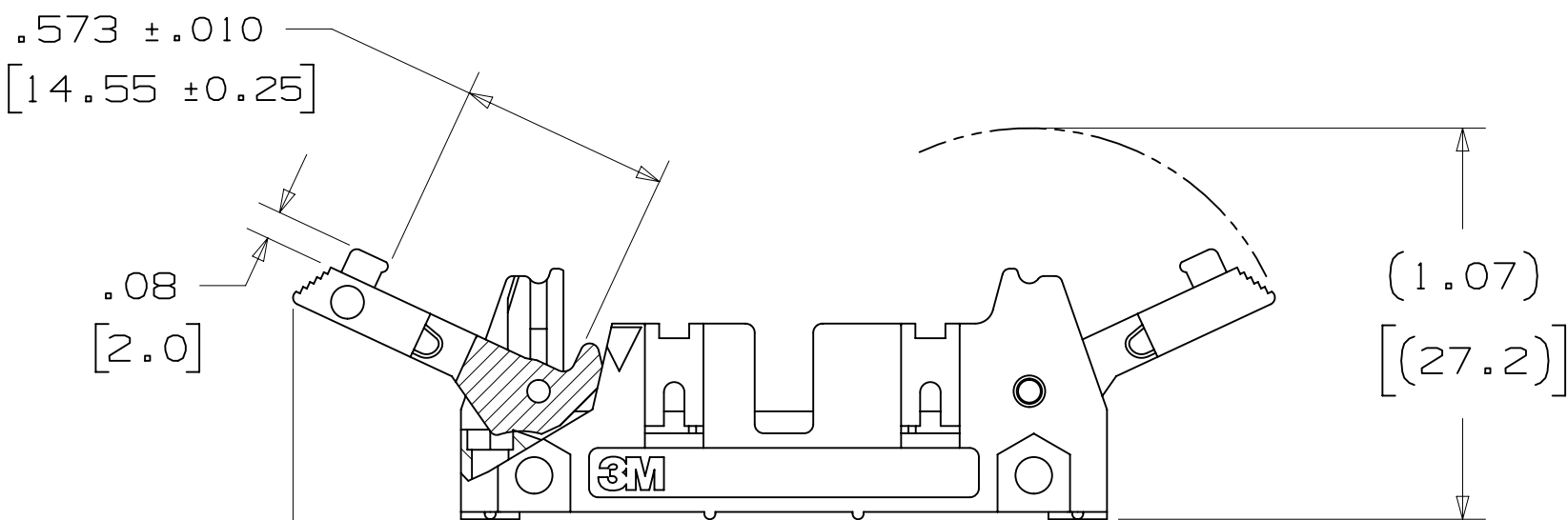
-X0XX

HEADER WITHOUT LATCH EJECTOR



-X2XX

HEADER WITH SHORT LATCH EJECTOR
FOR 3M SOCKETS WITHOUT STRAIN RELIEF



-X3XX

HEADER WITH LONG LATCH EJECTOR
FOR 3M SOCKETS WITH STRAIN RELIEF

2 PHYSICAL :

INSULATOR: GLASS FILLED POLYESTER (PCT)
MATERIAL: UL94V-0
FLAMMABILITY: COLOR: BLACK
CONTACT: MATERIAL: COPPER ALLOY
PLATING: UNDER PLATING: 100µ" [2.54µm] NICKEL-OVERALL
WIPING AREA: 30µ" [0.76µm] AVG. GOLD
SOLDER TAILS: 200µ" [5.08µm] TIN LEAD OR MATTE TIN (SEE ORDERING INFORMATION)
MARKINGS: 3M LOGO, PART IDENTIFICATION NUMBER AND ORIENTATION TRIANGLE

2 ELECTRICAL :

CURRENT RATING: 5.00A, 1 CONTACT POWERED
3.00A, 6 CONTACTS POWERED
1.75A, ALL CONTACTS POWERED
RATING CONDITIONS: EIA-364-070 METHOD 2, 30°C MAXIMUM
TEMPERATURE RISE, 20% DERATED. REFERENCE APPROPRIATE
3M PRODUCT SPECIFICATION FOR DETAILED CURRENT DERATING
CURVES.

INSULATION RESISTANCE: >1 X 10⁹Ω AT 500 V_{DC}
WITHSTANDING VOLTAGE: 1,000V_{RMS} AT SEA LEVEL

2 ENVIRONMENTAL :

TEMPERATURE RATING: -55°C TO 105°C
PROCESS RATING: 260°C, PER J-STD-020C, SINGLE PASS
MOISTURE SENSITIVITY LEVEL: 1 (PER J-STD-020C)

ORDERING INFORMATION

X3XXX-XXXXXX

N= HIGH TEMP BLACK (PCT)/(RB PLATING REQ'D)
BLANK= (UB PLATING)

3M PART NUMBER:
(SEE TABLE 1)

PIN CONFIGURATION:
1 = RIGHT ANGLE SOLDER TAILS
2 = STRAIGHT SOLDER TAILS

PLATING:
RB = 30µ" [0.76µm] GOLD AND 200µ" [5.08µm] MATTE TIN
(APP. E1 & C1 APPLY)
UB = 30µ" [0.76µm] GOLD AND 200µ" [5.08µm]
TIN LEAD (APP. E3 & C2 APPLY)

TAIL:
02 = FOR .062 [1.57] THICK BOARD
03 = FOR .094 TO .125 [2.39 TO 3.18] THICK BOARD
K2 = KINKED FOR .062 [1.57] THICK BOARD

LATCH/EJECTOR SYSTEM:
0 = NO LATCH/EJECTOR INSTALLED
2 = SHORT ROLL PIN LATCH/EJECTORS
3 = LONG ROLL PIN LATCH/EJECTORS

3M ELECTRONIC MATERIALS SOLUTIONS DIVISION
INTERCONNECT SOLUTIONS
<http://www.3mconnectors.com>

3M IS A TRADEMARK OF 3M COMPANY.
FOR TECHNICAL, SALES OR ORDERING
INFORMATION CALL 800-225-5373

- * MILITARY (WITH 3M'S N3518 POLARIZING KEY) AND CENTERBUMP POLARIZATION.
- * LOW PROFILE.
- * OPTIONAL EJECTOR LATCHES.
- * MOUNTING HOLES FOR SECURING HEADER TO BOARD.
- * THREE WALL SHROUD PROVIDES DESIGN FLEXIBILITY.
- * SOLDER TAIL AND WRAP TAIL OPTIONS.
- * OPTIONAL POLARIZING POSTS AVAILABLE.
- * HIGH TERMERATURE INSULATOR SUITABLE FOR "NO LEAD" SOLDERING OPERATIONS.
- * SUITABLE FOR REFLOW SOLDERING USING "PASTE IN HOLE" TECHNIQUES.

1. REGULATORY INFORMATION:
ROHS COMPLIANT. SEE THE
REGULATORY INFORMATION
APPENDIX (RIA) IN THE
"ROHS COMPLIANCE" SECTION
OF WWW.3MCONNECTORS.COM FOR
COMPLIANCE INFORMATION.

2. IN THE EVENT OF CONFLICT
BETWEEN THIS DATA AND THAT
CONTAINED IN THE PRODUCT
SPECIFICATION, THE PRODUCT
SPECIFICATION TAKES PRECEDENT.

3. NOTCHES A & C WILL ACCOMODATE
3M POLARIZING KEY: N3518).

4. MOUNTING HARDWARE:
FROM SOLDER SIDE OF PC BOARD
USE #4-24 THREAD CUTTING SCREW
(3M PART #3341-5) WITH
Ø.116 [2.95] MOUNTING HOLE.
FOR RIGHT ANGLE VERSION ONLY:
#2-56 BOLT AND NUT (3M PART
#3341-6) WITH Ø.106 [2.69]
MOUNTING HOLE MAY BE USED.

5. THE RECOMMENDED PCB HOLE SIZE
FOR THE KINKED TAIL POSITIONS
ON THE .112 SOLDER TAIL
CONNECTOR IS Ø.035±.002.
(SEE K2 VERSION).

DIMENSIONS: INCHES [MM]
[MM] IS REF. ONLY

DESIGN REFERENCE	NEXT ASSEMBLY	REV	ECO	ISSUE DATE AND DESCRIPTION	DRFT	CHKD
CODES				DATE	DATE	DATE
				AUG 05,2014		
				APPR		
				R. SCHERER		
				DATE		
				SEP 05,2014		
DIVISION	DIVISION CODE	© 3M COPYRIGHT 2015				
Interconnect Solutions	EMSD	3M property and the information it contains are 3M property and may not be reproduced or further distributed without 3M permission, or used or disclosed other than for 3M authorized purposes. All rights reserved.				
DO NOT SCALE DRAWING	SCALE 2 1	TOLERANCES EXCEPT AS NOTED				
		INCHES				
		.0 ±.01				
		.000 ±.005				
		.0000 ±				
THIRD ANGLE PROJECTION		MILLIMETERS				
		0 ±				
		.0 ±.3				
		.00 ±.13				
		.000 ±				
MAX SURFACE ROUGHNESS		ANGLES				
INTERPRET PER ASME Y14.5 - 2009						
MAX SURFACES						
MARKED ONLY						
TITLE		CAGE NUMBER	SIZE	DRAWING NO.	REV.	
HEADER, 3-WALL, .100 X .100 LATCH/EJECTOR, STRAIGHT & RA		D	78-5100-0771-5	H		
MODEL		3000 SERIES		DET	LISTS	YES X NO
				SHT	1	OF 4

UL FILE NO: E68080

3M™ THREE-WALL HEADER, 3000 SERIES

.100" X .100" LATCH/EJECTOR, STRAIGHT AND RIGHT ANGLE

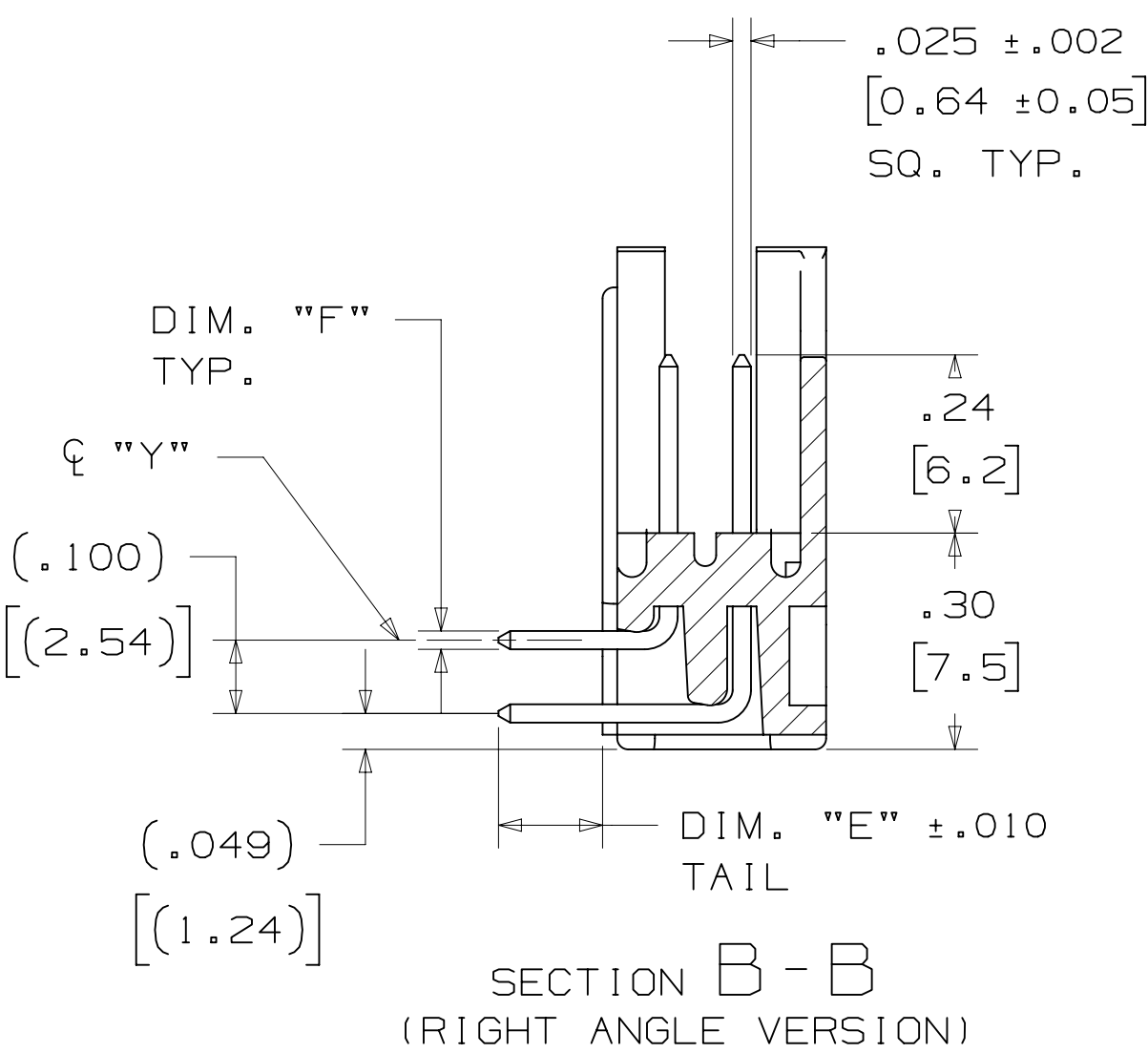
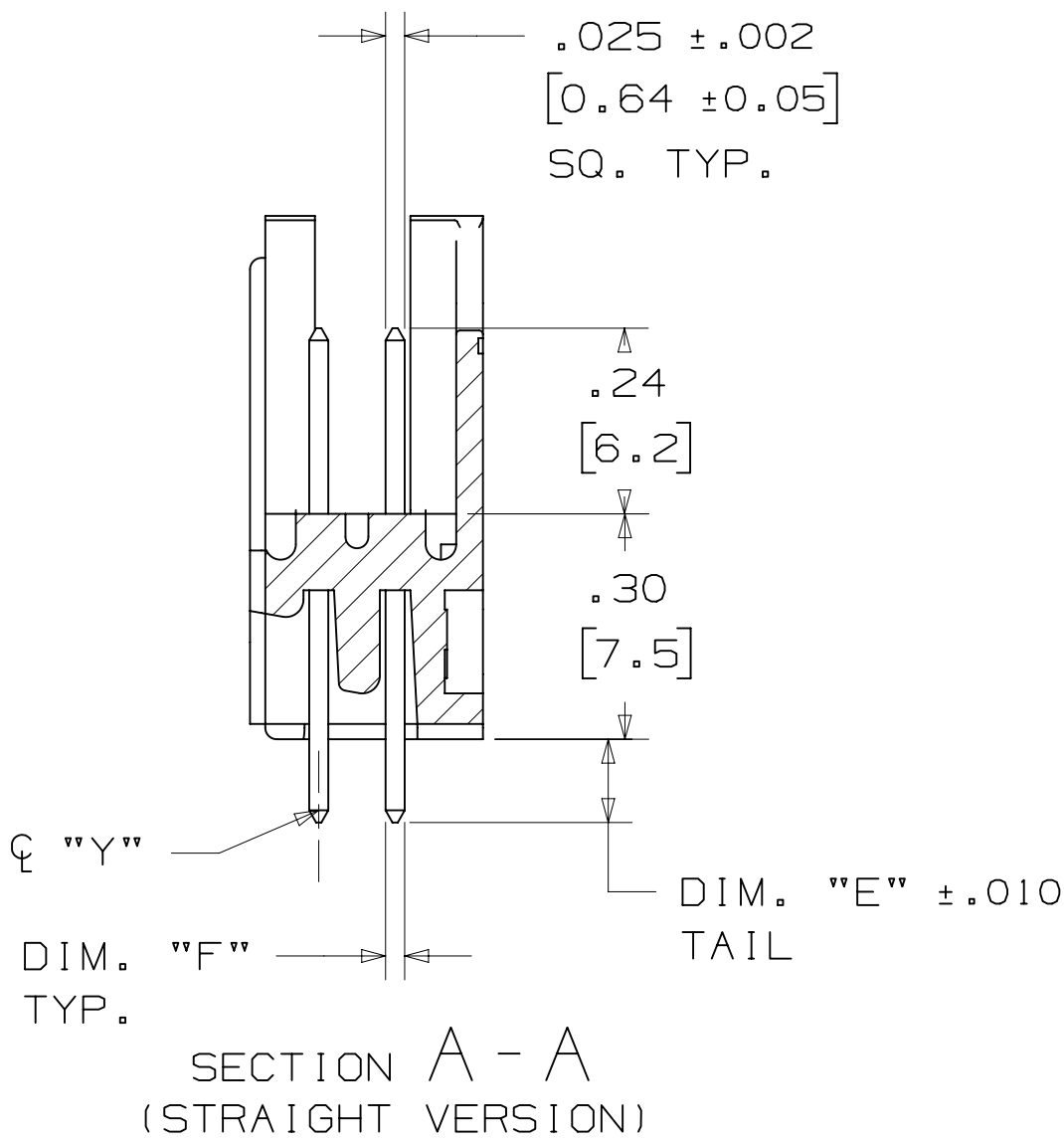
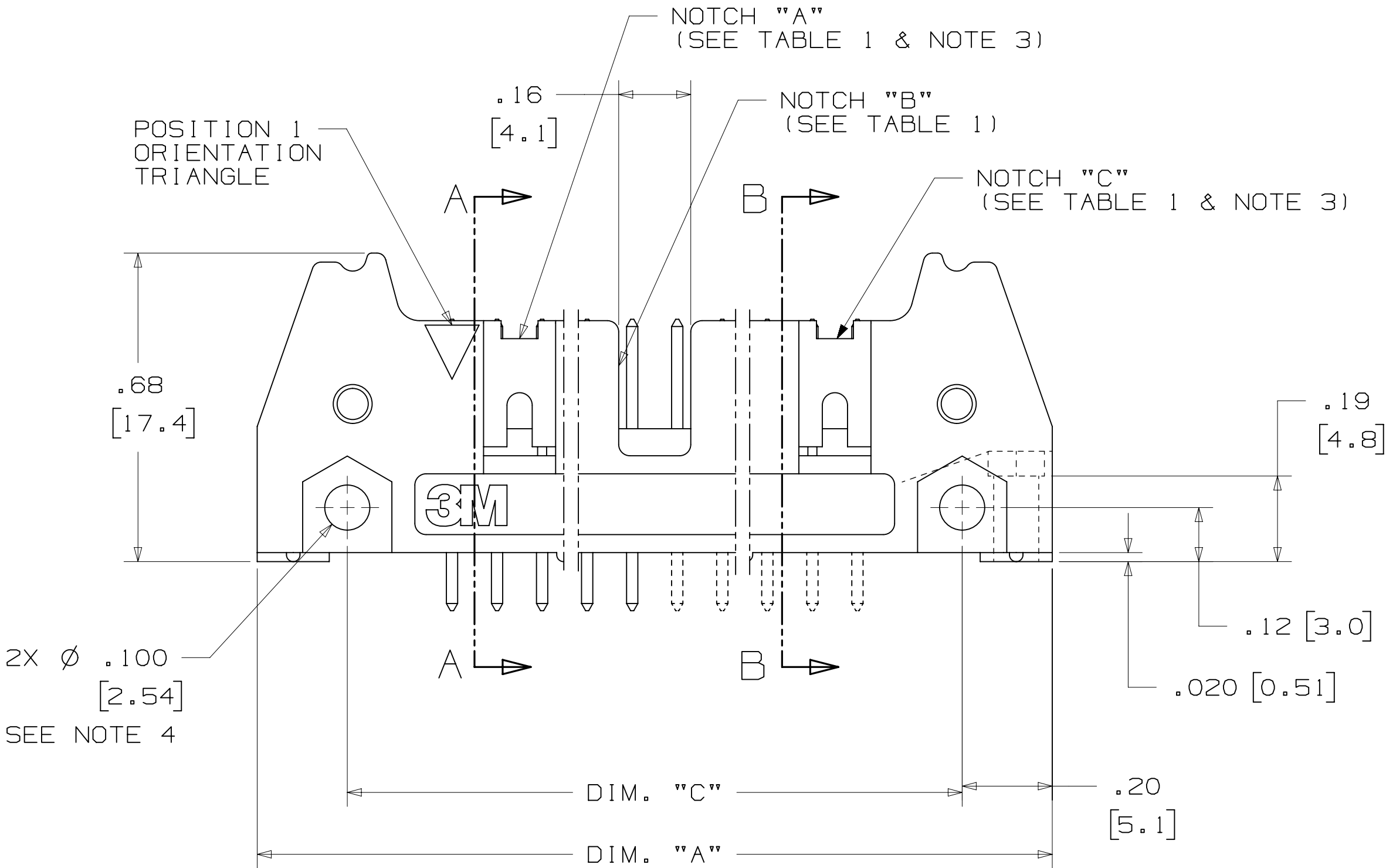
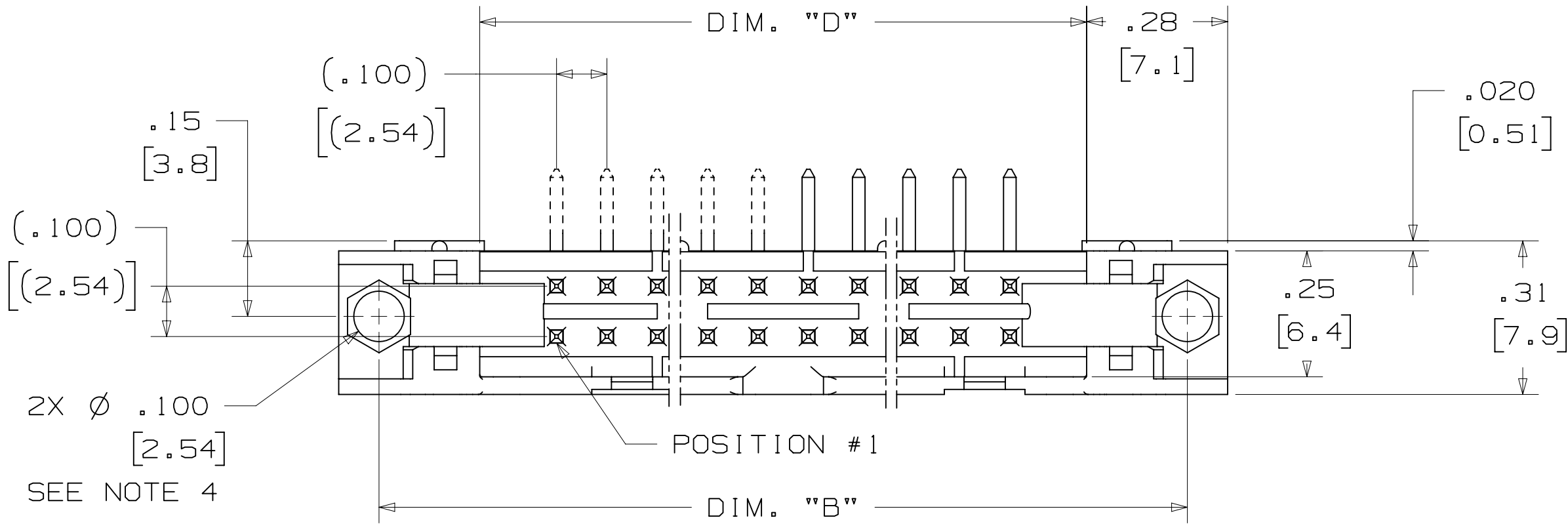


TABLE 1							
PIN QTY.	3M PART NUMBER	DIM. "A"	DIM. "B"	DIM. "C"	DIM. "D"	POLARIZING NOTCHES	PIN QTY.
10	3793	1.26 [32.1]	1.105 [28.04]	.865 [21.97]	.71 [18.0]	BC	10
14	3314	1.46 [37.2]	1.305 [33.12]	1.065 [27.05]	.91 [23.1]	BC	14
16	3408	1.56 [39.7]	1.405 [35.66]	1.165 [29.59]	1.01 [25.6]	ABC	16
20	3428	1.76 [44.8]	1.604 [40.74]	1.365 [34.67]	1.21 [30.7]	ABC	20
26	3429	2.06 [52.4]	1.905 [48.36]	1.665 [42.29]	1.51 [38.3]	ABC	26
34	3431	2.46 [62.6]	2.305 [58.52]	2.065 [52.45]	1.91 [48.5]	ABC	34
40	3432	2.76 [70.2]	2.605 [66.14]	2.365 [60.07]	2.21 [56.1]	ABC	40
50	3433	3.26 [82.9]	3.105 [78.84]	2.865 [72.77]	2.71 [68.8]	ABC	50
60	3372	3.76 [95.6]	3.605 [91.54]	3.365 [85.47]	3.21 [81.5]	ABC	60
64	3764	3.96 [100.7]	3.805 [96.62]	3.565 [90.55]	3.41 [86.6]	ABC	64

TABLE 2						
3M PART NUMBER SUFFIX	CONTACT TAIL	DIM. "E"	PIN CROSS SECTION			DIM. "G"
-1XX2 -2XX2	.062 [1.57] THICK PC BOARD	.112 [2.84]	DIM. "F" .0245+/- .0005 [.622]	DIAGONALS .028+/- .001 [.71]	CORNER RADIUS .0075 REF. [.191]	.035+/- .003 [.89] SEE NOTE 5
-1X03 -2X03	.094 [2.39] TO .125 [3.18] THICK PC BOARD	.155 [3.94]	.0245+/- .0005 [.622]	.028+/- .001 [.71]	.0075 REF. [.191]	.035+/- .003 [.89]



DESIGN REFERENCE
NEXT ASSEMBLY

DO NOT SCALE DRAWING

THIRD ANGLE PROJECTION

MAX SURFACE ROUGHNESS
LISTED SURFACES
MARKED ONLY

INTERCONNECT SOLUTIONS

SCALE 4/1

INTERPRET PER ASME Y14.5 - 2009

TOLERANCES EXCEPT AS NOTED

INCHES
0 ± .01
.000 ± .005
.0000 ±

MILLIMETERS
0 ± .3
.00 ± .13
.000 ±

ANGLES

3M

© 3M COPYRIGHT 2015
3M Center
St. Paul,
MN 55144

THIS DOCUMENT AND THE INFORMATION IT CONTAINS ARE 3M PROPERTY AND MAY NOT BE REPRODUCED OR FURTHER DISTRIBUTED WITHOUT 3M PERMISSION, OR USED OR DISCLOSED OTHER THAN FOR 3M AUTHORIZED PURPOSES. ALL RIGHTS RESERVED.

TITLE
HEADER, 3-WALL, .100 X .100 LATCH/EJECTOR, STRAIGHT & RA

CAGE NUMBER
D78-5100-0771-5

MODEL
3000 SERIES

REV. ECO
DATE
AUG 05, 2014

ISSUE DATE AND DESCRIPTION
REVISED AND REDRAWN

DATE
SEP 05, 2014

DRFT
JNC

CHKD
RS

REV. ECO
DATE
AUG 05, 2014

ISSUE DATE AND DESCRIPTION
REVISED AND REDRAWN

DATE
SEP 05, 2014

DRFT
JNC

CHKD
RS

REV. ECO
DATE
AUG 05, 2014

ISSUE DATE AND DESCRIPTION
REVISED AND REDRAWN

DATE
SEP 05, 2014

DRFT
JNC

CHKD
RS

.100" X .100" LATCH/EJECTOR, STRAIGHT AND RIGHT ANGLE



THIS SPEC SHEET DETAILS OUR STANDARD OFFERING.

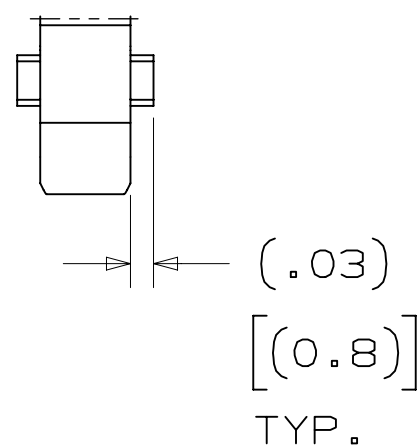
3M HAS SEVERAL CAPABILITIES THAT CAN PROVIDE A PART TAILORED TO YOUR SPECIFIC NEEDS. ASK YOUR 3M SALES REPRESENTATIVE OR CUSTOMER SERVICE FOR MORE DETAILS.

BOTH SNAP-IN AND ROLL PIN LATCHES MAY BE ORDERED SEPARATELY. SNAP-IN AND ROLL PIN STYLE LATCHES ARE DIMENSIONALLY AND FUNCTIONALLY EQUIVALENT. IF ORDERING SNAP-IN OR ROLL PIN STYLE LATCHES SEPARATELY, PLEASE USE THE BELOW CHART.

```
* SELECTIVE PIN REMOVAL (ATA OR OTHER COMPATABILITY)
* WIRE WRAP TAILS STYLE
```

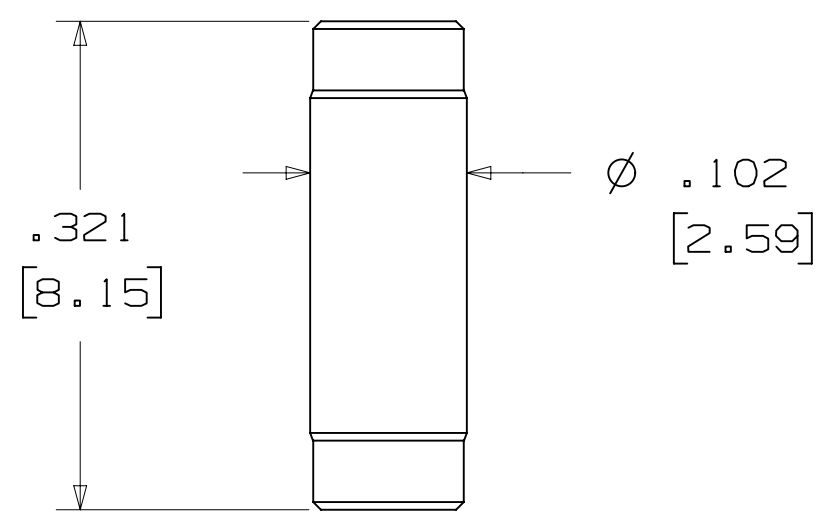


SHORT



SNAP-IN LATCHES

NOTE:
SNAP-IN LATCHES CAN ONLY BE ORDERED
SEPARATELY AND ARE THE CUSTOMERS
RESPONSIBILITY TO INSTALL.

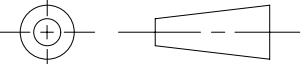



NOTE:
INSERT POST INTO ONE MOUNTING
HARDWARE HOLE ON BOTTOM OF HEADER.
SET POST TO PROTRUDE .115 [2.92]

KINKED TAIL DETAIL:

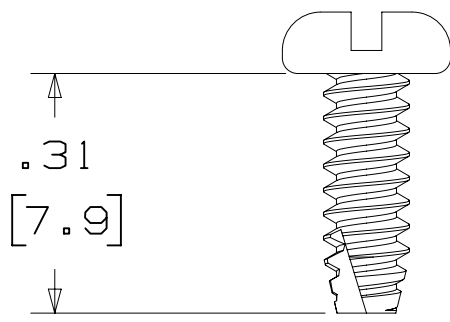
- KINK IS LOCATED .05" BELOW BOTTOM SURFACE OF PLASTIC.
- EXTERNAL RADIUS OF KINK TOWARD PART CENTERLINE.



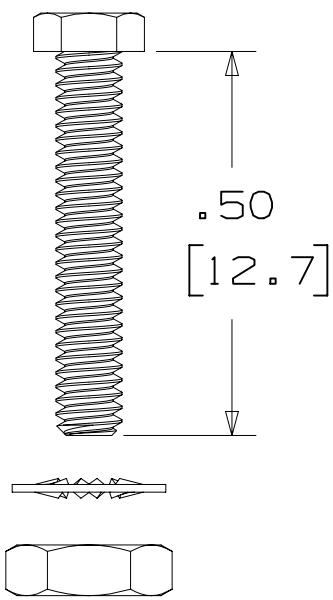
DESIGN REFERENCE		NEXT	ASSEMBLY	REV	ECO	ISSUE DATE	DATE AND DESCRIPTION	DRFT	CHKD
ADDRESS CODES				DRFT CASTIGLIONE		DATE AUG 05, 2014	MFG	DATE	
				CHKD		DATE	APRVL R. SCHERER	DATE SEP 05, 2014	
DIVISION		DIVISION CODE		© 3M COPYRIGHT 2015					
Interconnect Solutions		EMSD		3M Center		This document and the information it contains are 3M property and may not be reproduced or further distributed without the written permission, use or disclosed other than for 3M authorized purposes. All rights reserved.			
DO NOT SCALE DRAWING		SCALE 1		3M St. Paul, MN 55144					
		TOLERANCES EXCEPT AS NOTED		TITLE		HEADER, 3-WALL, .100 X .100 LATCH/EJECTOR, STRAIGHT & RA			
THIRD ANGLE PROJECTION		INCHES .00 ± .00 ±.01 .000 ±.005 .0000 ±		MILLIMETERS					
INTERPRET PER ASME Y14.5 - 2009		.00 ± .00 ±.13 .000 ±		CAGE NUMBER		SIZE		DRAWING NO.	
MAX. SURFACE ROUGHNESS 		.00 ± .00 ±.13 .000 ±		D		78-5100-0771-5		REV. H	
<input checked="" type="checkbox"/> UNFINISHED SURFACES <input type="checkbox"/> MARKED ONLY		ANGLES ±		MODEL		3000 SERIES		DET. LISTS <input checked="" type="checkbox"/> YES <input checked="" type="checkbox"/> NO	
								SHT 3 OF 4	

3M™ THREE-WALL HEADER, 3000 SERIES
.100" X .100" LATCH/EJECTOR, STRAIGHT AND RIGHT ANGLE

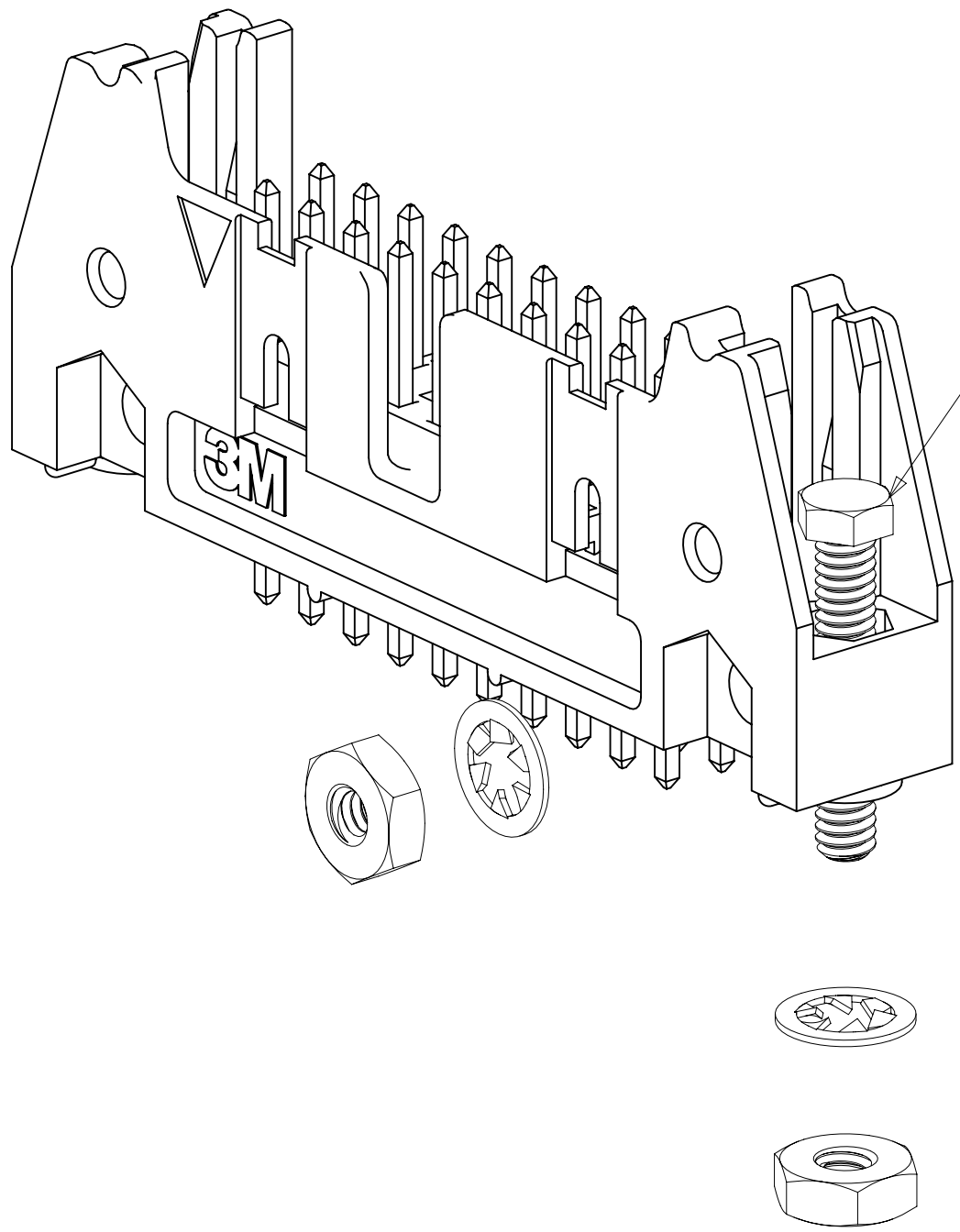
MOUNTING HARDWARE



3341-5
(INSTALL FROM BOTTOM OF BOARD)
PANHEAD THREAD CUTTING SCREW:
#4-24 X 5/16"
TYPE: USA STD BT, FEDERAL B6
MATERIAL: STAINLESS STEEL



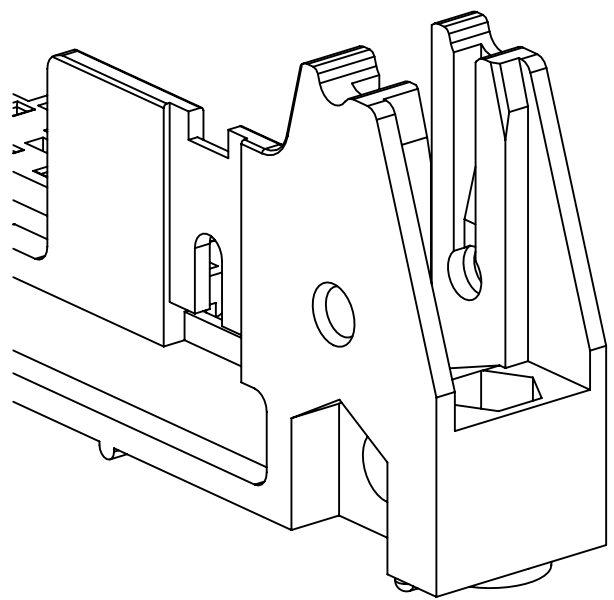
3341-6
HEX HEAD BOLT, NUT AND WASHER:
BOLT - #2-56 X 1/2"
MATERIAL: STAINLESS STEEL



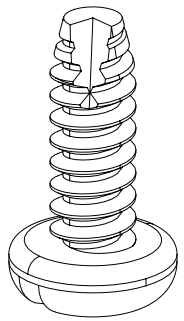
STRAIGHT VERSION INSTALL
(MUST BE INSERTED PRIOR TO
LATCH INSTALL)

RIGHT ANGLE VERSION INSTALL

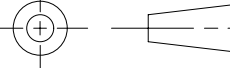

3341-6
#2-56 NUT AND BOLT
TORQUE FOR EACH BOLT: 1.25 - 3.125 INCH LBS.



#4-24 TYPE BT SELF THREADING SCREW
WHEN USING LATCHES, MAXIMUM LENGTH
OF SCREW IS .250 INCHES PLUS
THICKNESS OF THE BOARD.
TORQUE FOR EACH SCREW IS 3-5 INCH LBS.



3341-5

H		650056		MAR 06, 2015		JNC		RS			
G		56068		AUG 05, 2014		JNC		RS			
DESIGN REFERENCE		NEXT ASSEMBLY		REV		ECO		ISSUE DATE AND DESCRIPTION		DRFT	CHKD
ACCTG CODES				DRFT		CASTIGLIONE		DATE		AUG 05, 2014	
				CHKD				DATE			
						APPR		R. SCHERER		DATE	
										SEP 05, 2014	
DIVISION		DIVISION CODE		© 3M COPYRIGHT 2015							
Interconnect Solutions		EMSD		This document and the information it contains are 3M property and may not be reproduced or further distributed without 3M permission, or used or disclosed other than for 3M authorized purposes. All rights reserved.							
DO NOT SCALE DRAWING		SCALE 4 1		TOLERANCES EXCEPT AS NOTED		TITLE					
						HEADER, 3-WALL, .100 X .100 LATCH/EJECTOR, STRAIGHT & RA					
THIRD ANGLE PROJECTION											
INTERPRET PER ASME Y14.5 - 2009											
MAX. SURFACE ROUGHNESS											
											
MARKED ONLY											
		</									

Mouser Electronics

Authorized Distributor

Click to View Pricing, Inventory, Delivery & Lifecycle Information:

[3M:](#)

[3314-2002](#) [3372-1002](#) [3408-1002](#) [3429-1003](#) [3429-2002](#) [3431-1003](#) [3431-2003](#) [3432-1003](#) [3432-2003](#) [3433-1002](#) [3433-2003](#) [3793-1003](#) [3793-2002](#) [3793-2003](#) [3314-2202](#) [3314-2302](#) [3372-1202](#) [3372-1302](#) [3372-1303](#) [3408-1203](#) [3408-1303](#) [3428-2203](#) [3431-1303](#) [3431-2302](#) [3432-1303](#) [3432-2203](#) [3433-1203](#) [3433-2203](#) [3764-1202](#) [3764-2202](#) [N3314-1202RB](#) [N3314-2303RB](#) [N3408-1202RB](#) [N3408-1302RB](#) [N3408-2202RB](#) [N3428-1002RB](#) [N3428-1302RB](#) [N3428-2002RB](#) [N3428-2003RB](#) [N3428-2302RB](#) [N3428-2303RB](#) [N3429-1302RB](#) [N3429-1303RB](#) [N3429-2303RB](#) [N3431-1002RB](#) [N3431-1202RB](#) [N3431-1303RB](#) [N3431-2303RB](#) [N3432-1002RB](#) [N3432-1202RB](#) [N3432-1302RB](#) [N3432-2202RB](#) [N3432-2303RB](#) [N3433-1202RB](#) [N3433-1302RB](#) [N3433-1303RB](#) [N3433-2202RB](#) [N3433-2302RB](#) [N3793-1202RB](#) [N3793-2202RB](#) [N3793-2302RB](#) [3314-1303](#) [3314-2303](#) [3372-2302](#) [3408-1302](#) [3408-2303](#) [3428-1302](#) [3428-2303](#) [3429-1202](#) [3429-1303](#) [3429-2303](#) [3431-1302](#) [3431-2303](#) [3432-1302](#) [3432-2202](#) [3432-2302](#) [3432-2303](#) [3433-1202](#) [3433-2303](#) [3793-1303](#) [3793-2202](#) [3793-2303](#) [957631-30](#) [3433-1303](#) [N3314-1002RB](#) [N3314-2203RB](#) [N3314-2302RB](#) [N3372-1002RB](#) [N3372-2002RB](#) [N3372-2202RB](#) [N3372-2302RB](#) [N3408-1003RB](#) [N3408-1203RB](#) [N3408-2002RB](#) [N3408-2203RB](#) [N3428-1303RB](#) [N3428-2203RB](#) [N3429-1203RB](#) [N3429-2203RB](#) [N3431-1203RB](#)